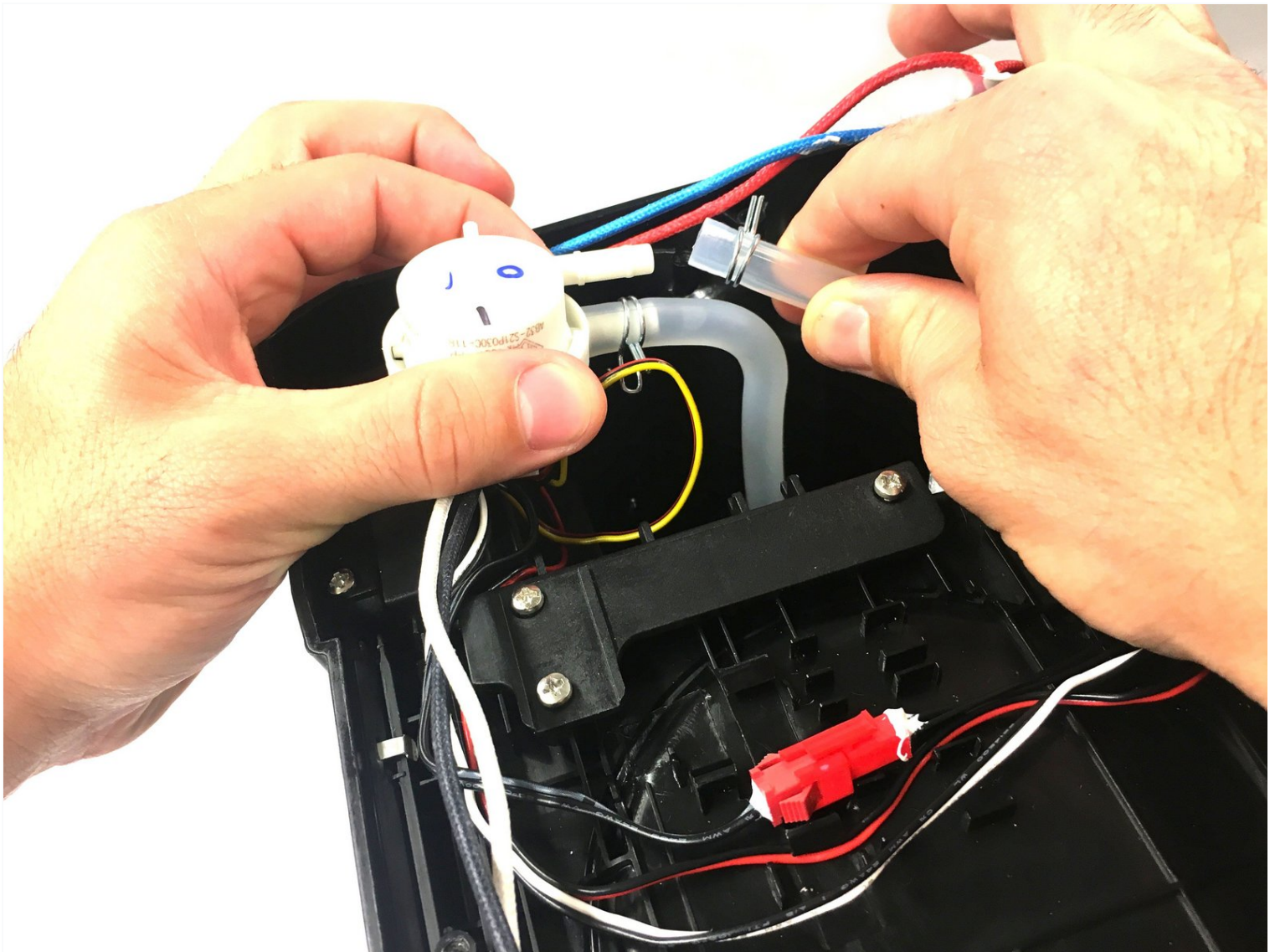




# Ninja Coffee Bar® Single-Serve System Valve Tubes Replacement

Changing the tubes when the Ninja Coffee Bar®...

Written By: Naser Aldousari



# INTRODUCTION

Changing the tubes when the Ninja Coffee Bar® Single-Serve System leaks water from the bottom will require some time but can fix a few problems. Ensure the device is in a secure open area where you will not lose any screws because they are small. You will want the magnetic pad provided in the iFixit tool kit. Warning: be careful when removing the protective plate because many wires cannot be disconnected.

Before beginning the repair, turn off the coffee maker and unplug the device from the power outlet.

## TOOLS:

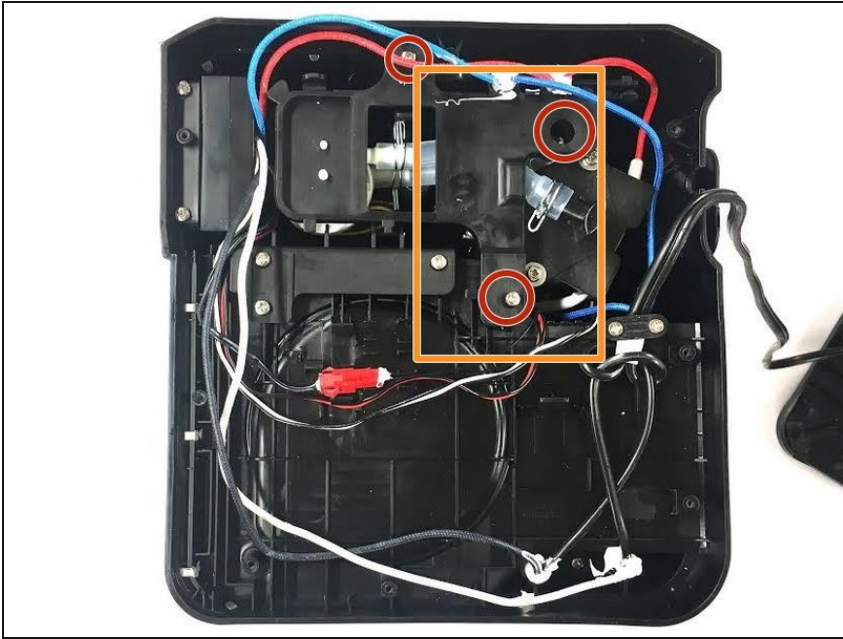
Tournevis cruciforme #1 (1)

### Step 1 — Valve Tubes



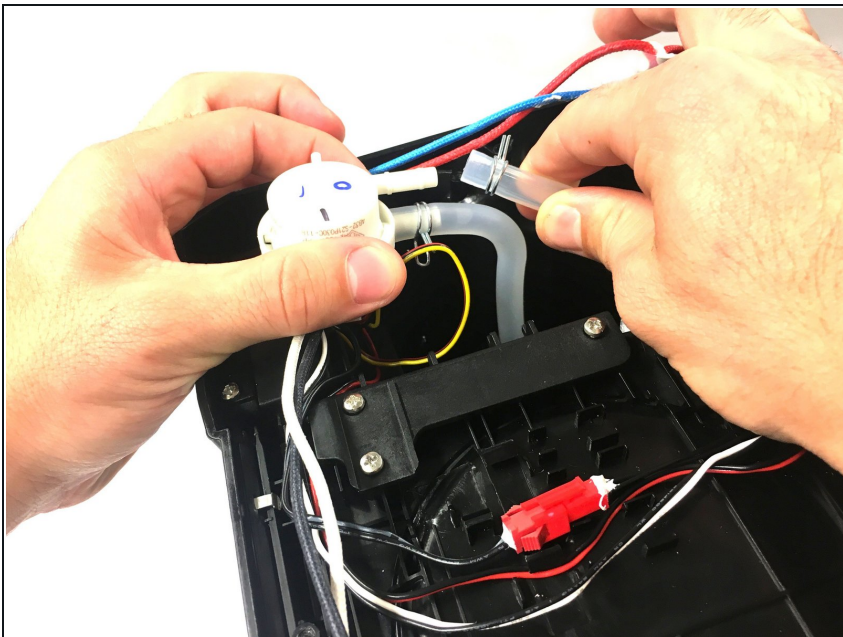
- Remove the eight 6 mm screws using the Phillips #1 screwdriver.
- Remove the bottom cover.

## Step 2



- Remove the three 6 mm screws with the Phillips #1 screwdriver.
- Remove the plastic cover.

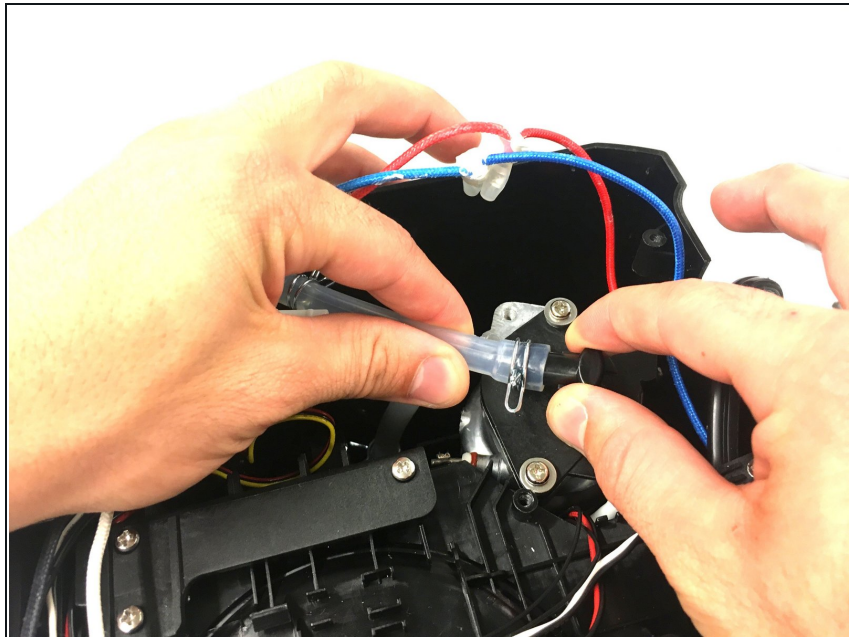
## Step 3



- Detach the valve tubes from the valve by squeezing the pins and pulling them away from the valve.



## Step 4



- Detach the valve tubes from the device by pinching the pins and sliding the valve tubes off.

To reassemble your device, follow these instructions in reverse order.