



# MSI GS63VR 6RF Stealth Pro Battery Replacement

Replacing the battery of the MSI GS63VR 6RF Stealth Pro.

Written By: Jay Etzkorn



## INTRODUCTION

This guide will help you replace the battery in your MSI GS63VR 6RF Stealth Pro. You will need to have purchased the replacement battery prior if you are replacing your battery.



### TOOLS:

- [Phillips #00 Screwdriver](#) (1)
- [Tweezers](#) (1)
- [iFixit Opening Tools](#) (1)



### PARTS:

- [MSI GS63 and GS73 Replacement Battery](#) (1)

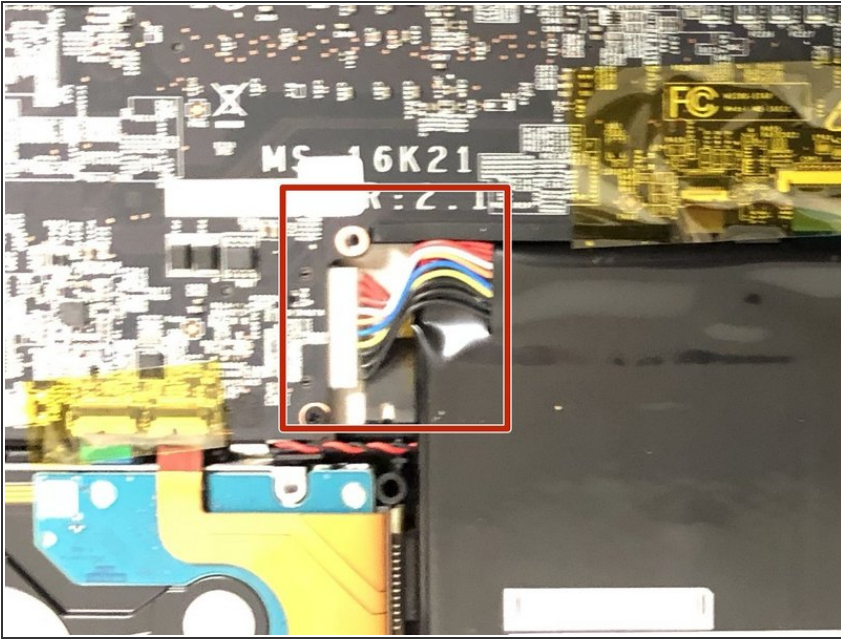
## Step 1 — Battery



- ⓘ Before you begin, be sure to turn off your laptop and discharge the battery down to 25%.
- Use a Phillips screwdriver to remove the 15 screws securing the back cover.
- Insert an opening tool or spudger in the seam and pry along the perimeter to loosen the back cover.
- ⚠ Do not insert the opening tool too far into the back edge (with "Stealth" written on it), or you may damage the power LED.
- ⓘ The back cover is secured with clips. Too much pressure from the spudger can break the clips, but some flex is not dangerous.
- Remove the back cover.



## Step 2



- Disconnect the battery by carefully pulling its connector towards the battery.
- ⚠ Pull parallel to the battery, not straight up.

## Step 3



- ⓘ The battery is attached to the laptop with a strong adhesive.
- Lift the battery from laptop.
- ⚠ Be careful not to bend the or puncture the battery, as that may cause a fire hazard.

To reassemble your device, follow these instructions in reverse order.

For optimal performance, after completing this guide, [calibrate](#) your newly installed battery.

Take your e-waste to an [R2 or e-Stewards certified recycler](#).

Repair didn't go as planned? Try some [basic troubleshooting](#), or ask our [Answers community](#) for help.