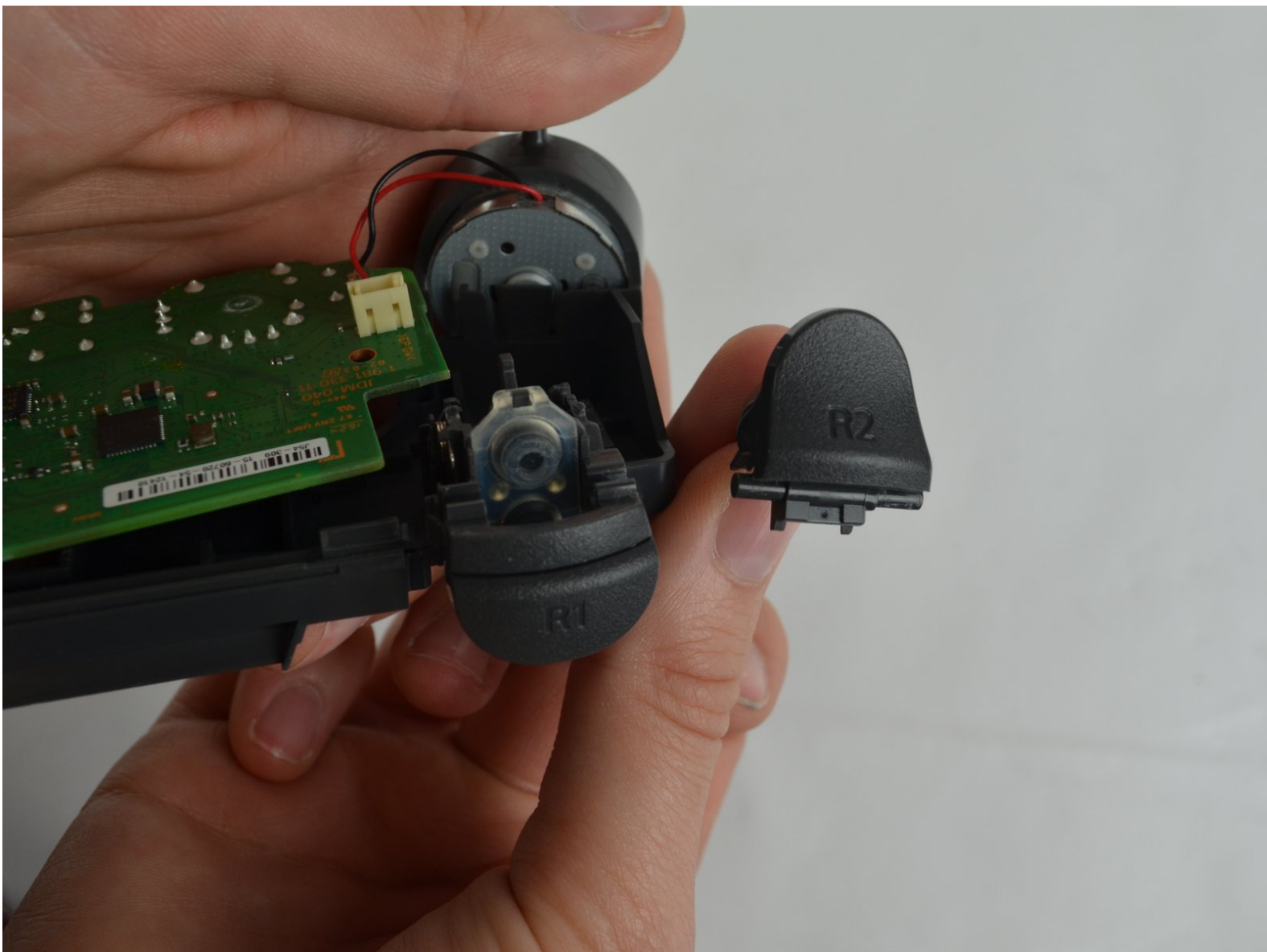




DualShock 4 CHU-ZCT2U L1 and R1 Buttons Replacement

Written By: Michelle Joseph





TOOLS:

- [iFixit Opening Tool](#) (1)
- [Phillips #00 Screwdriver](#) (1)
- [Tweezers](#) (1)



PARTS:

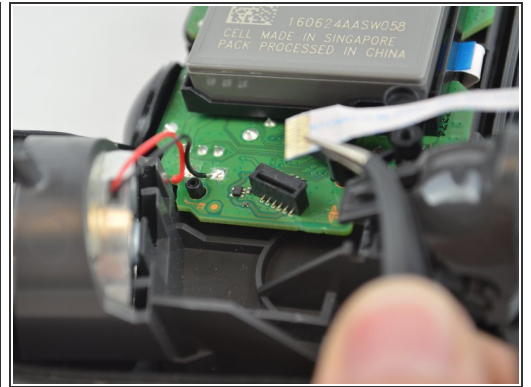
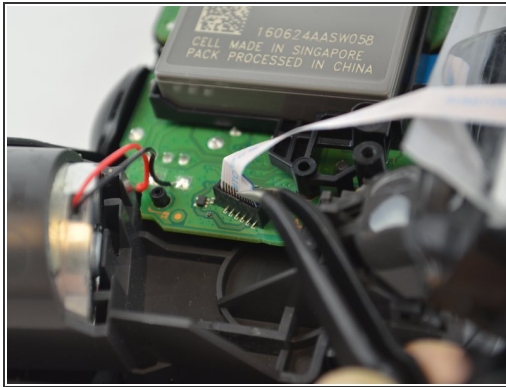
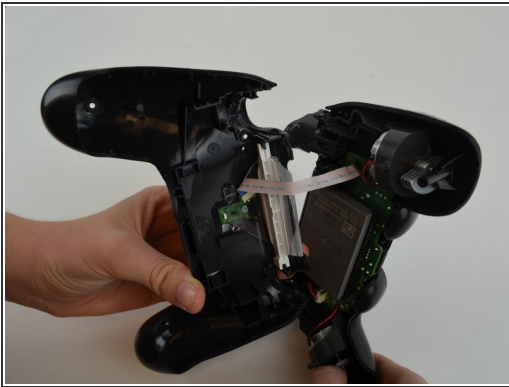
- [DualShock 4 Controller Right Trigger Button Covers](#) (1)
- [DualShock 4 Controller Left Trigger Button Covers](#) (1)

Step 1 — Outer Shell



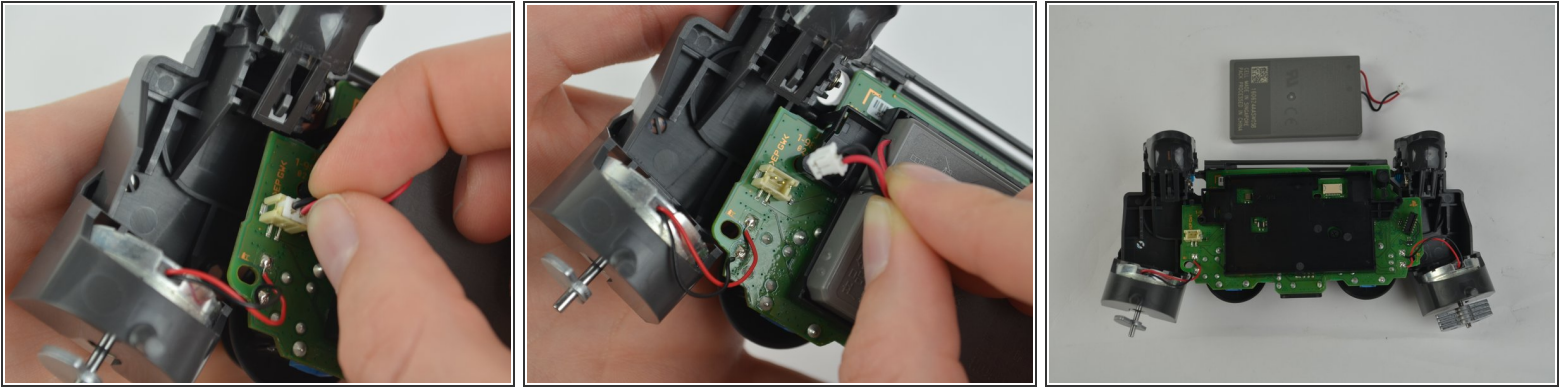
- Unscrew the four 6.5mm screws, using a Phillips-Head screwdriver.
- Pry the two halves of the shell apart using a plastic opening tool.
- ⓘ Be careful, as there will be a ribbon connecting the inner workings of the controller. It will not separate into two parts just by pulling apart the shell.

Step 2



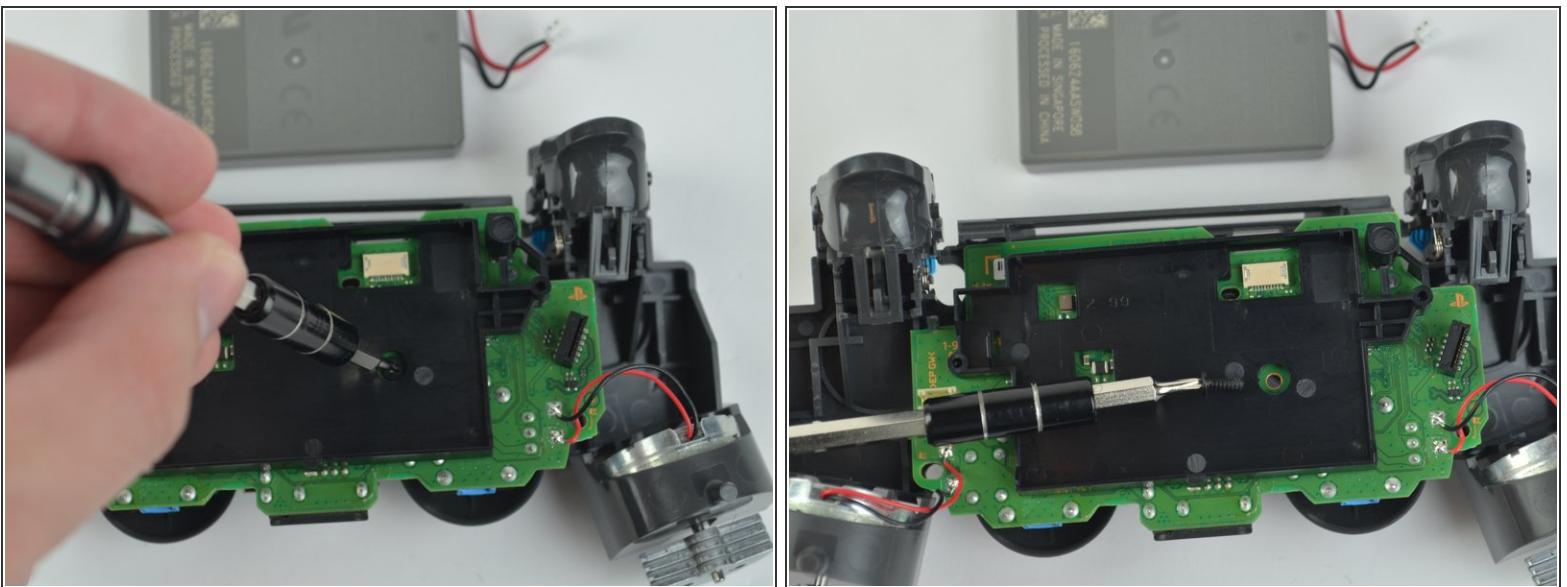
- Pull the ribbon cable out of the motherboard port to fully separate the two halves, using a pair of tweezers.

Step 3 — Battery



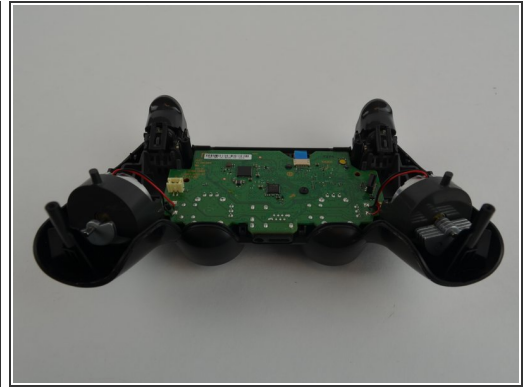
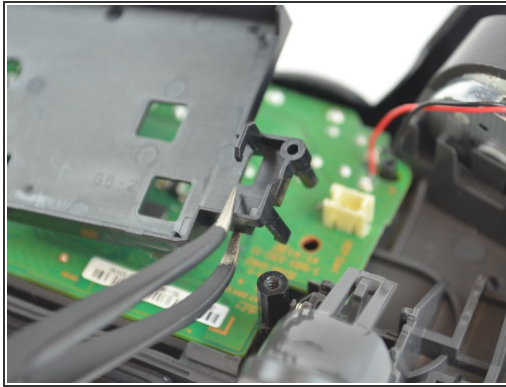
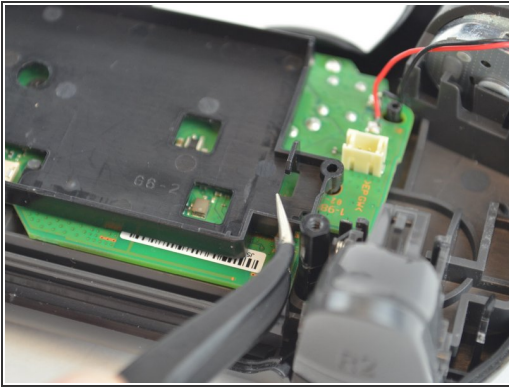
- Unplug the black and red wires from the power port located on the motherboard.
- Remove the old battery from the controller.

Step 4



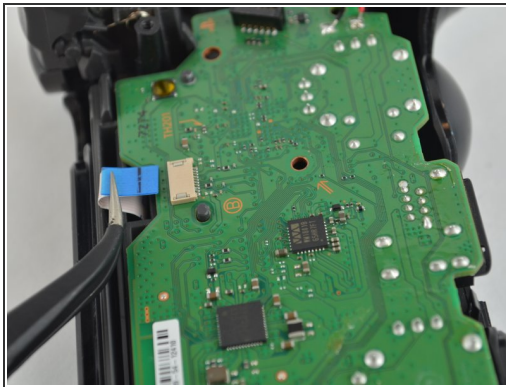
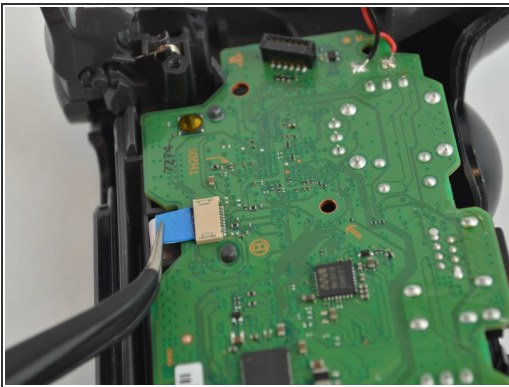
- Remove the 6.43mm screw connecting the motherboard to the inner workings of the controller, using a Phillips-Head screwdriver.

Step 5



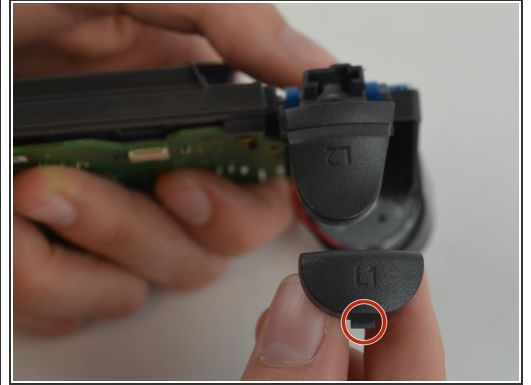
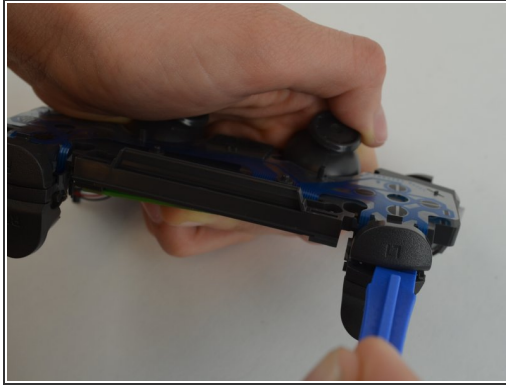
- Unhook the battery case from the motherboard, and pull it off.

Step 6 — L and R Buttons



- Pull out the second CPU ribbon to separate the inner workings from the top of the outer shell.

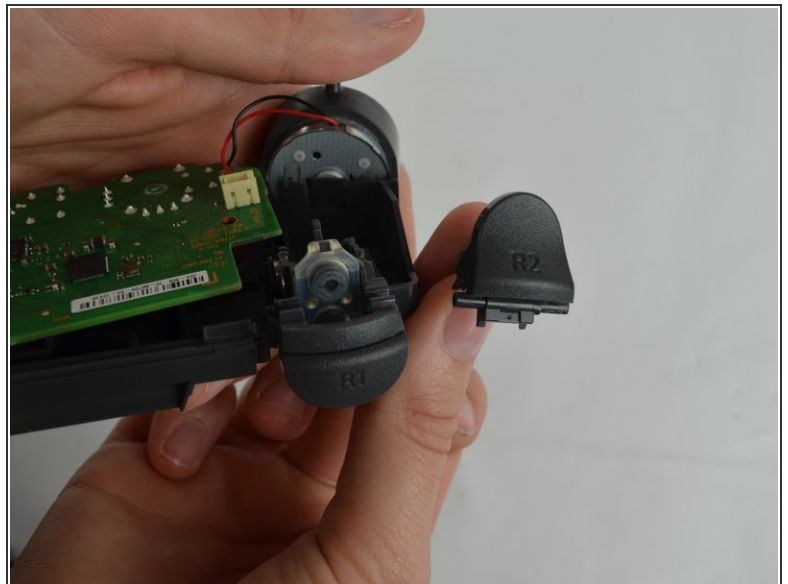
Step 7



- Pry the button from the controller using the plastic opening tool. Slide the tool between the buttons. There will be a tab you can push in to remove the button.

⚠ If too much force is applied, the button could go flying upon separating. Try not to force the buttons too much.

Step 8



- Insert the plastic opening tool into the space created when the button is pressed down. Make sure the tool is situated directly in the center of the space, before attempting to pry the button out.

To reassemble your device, follow these instructions in reverse order.

