



HP Envy TouchSmart m7 k010dx Battery Replacement

If you observe a significant reduction in...

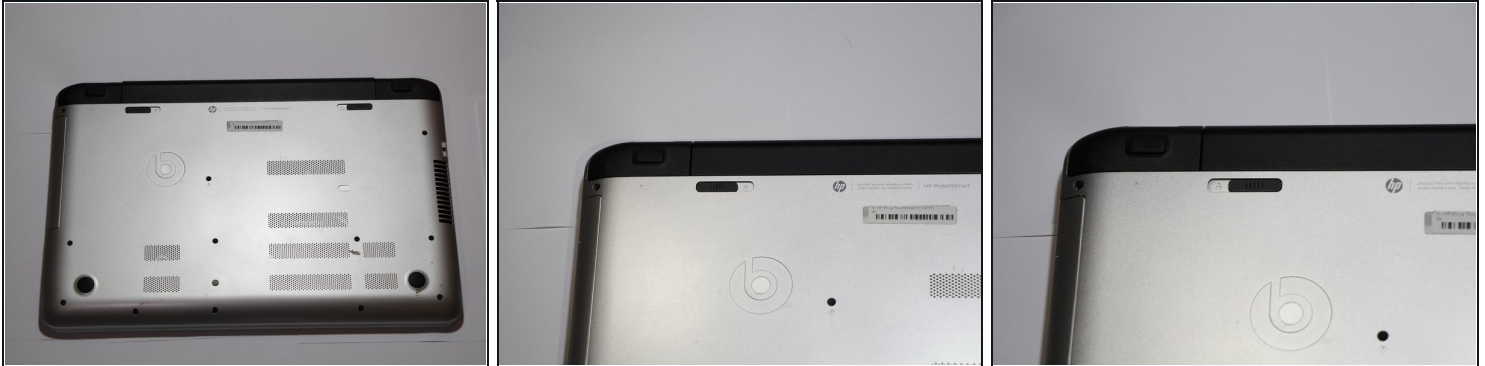
Written By: Owen Ou



INTRODUCTION

If you observe a significant reduction in battery life, frequent charging, unexpected shutdowns, or visible physical damage, these may indicate that the battery in your HP Envy TouchSmart m7-k010dx needs replacement. The battery is a rechargeable lithium-ion type that allows you to maintain a sustainable energy flow as long as good maintenance and replacement is done.

Step 1 — Battery



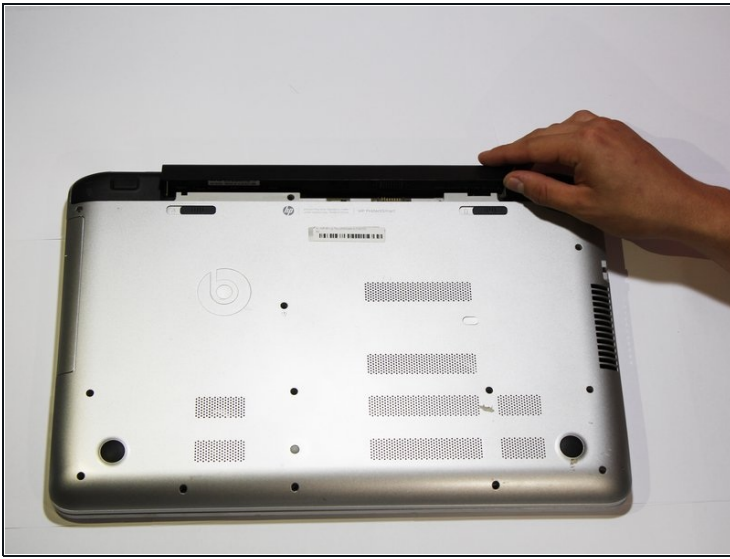
- Turn your computer over so that the bottom is facing up.
- Slide the left black switch towards center.
- You should see an unlock image exposed to the left of switch if done correctly.

Step 2



- Slide the right black switch towards center to release the battery.

Step 3



- Pivot the loose edge of the battery closes to you by pushing it toward the back of the computer.
- The battery should slide out freely.

⚠ If battery is not pivoted before sliding out, you risk breaking interlocking tabs on the battery or computer.

To reassemble your device, follow these instructions in reverse order.