



Neato XV-21 Wheels Replacement

This guide will tell you how to go about replacing the wheels If debris is keeping them from turning.

Written By: zachary rodriguez



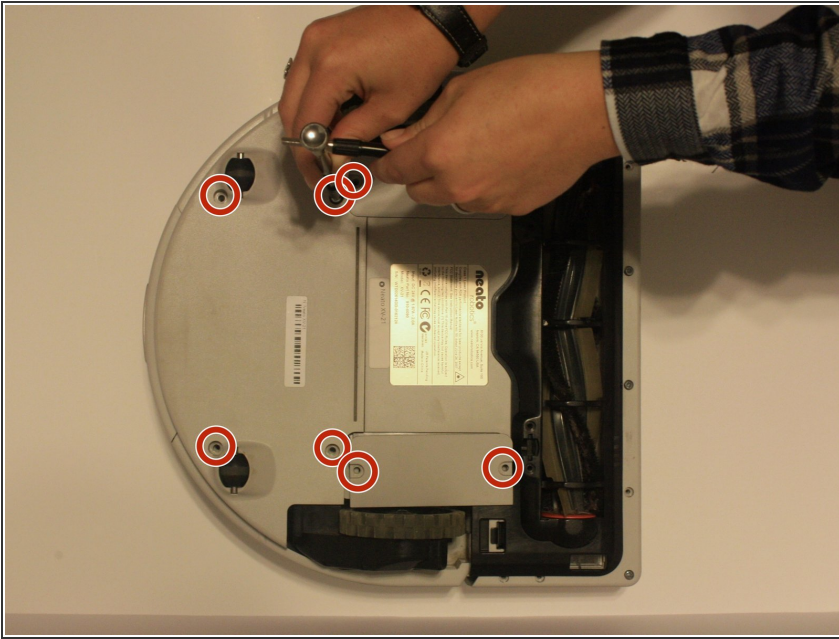
INTRODUCTION

To replace the wheels you will want your device turned off and have a phillips screwdriver ready. This is a easy fix and should see the problem upon unscrewing the wheels.

TOOLS:

- [Phillips #0 Screwdriver](#) (1)
-

Step 1 — Back Panels of Neato XV-21



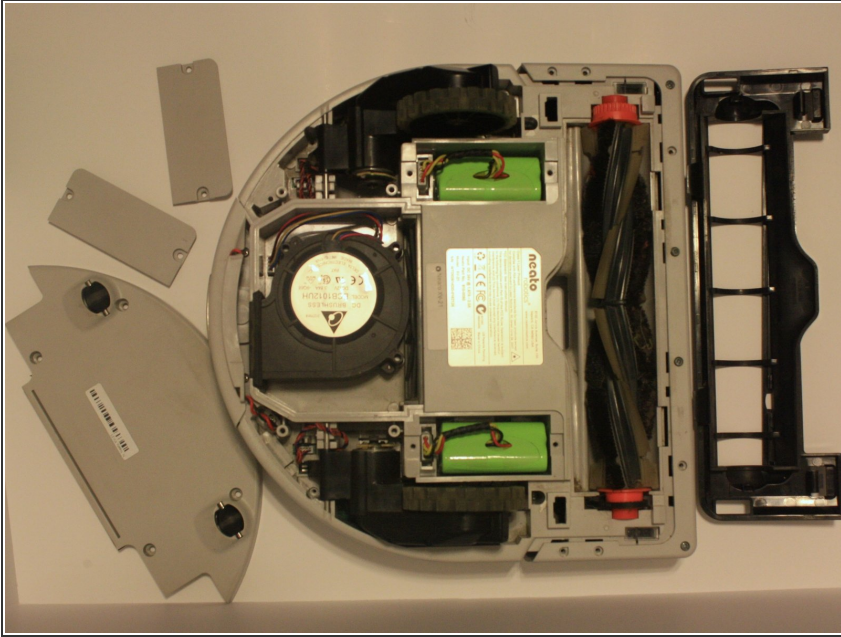
- Flip the Neato on its back so the bottom is exposed
- Unscrew the seven screws.

Step 2



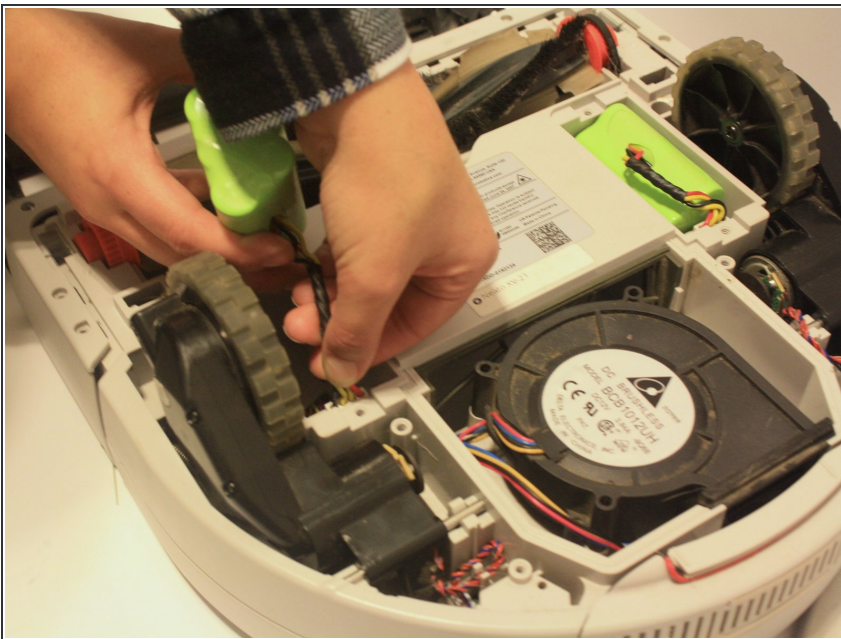
- Lift the panels to reveal the batteries, brush and fan
- ⓘ There should be little to no resistance during this step, do not continue if the pieces do not separate easily

Step 3



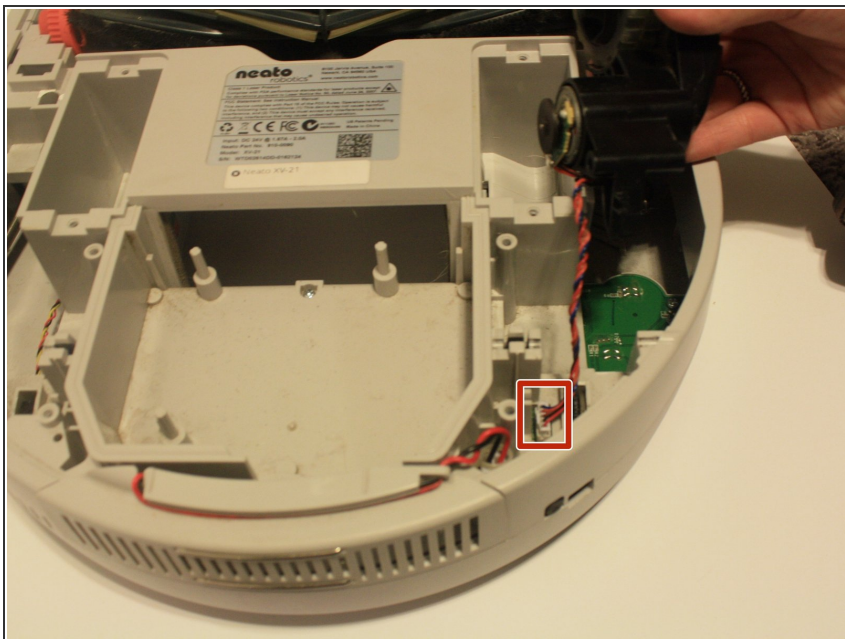
- The Neato's core components are now exposed and ready to be cleaned and/or replaced.

Step 4 — Battery



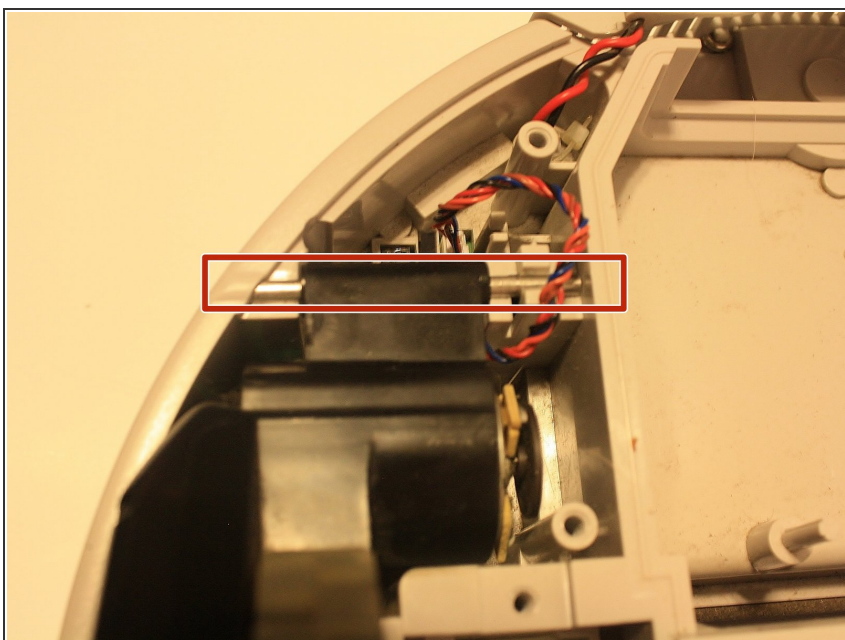
- Pinch and pull the white connector to disconnect the battery from the device
- ⚠ Failure to complete this step could cause electric shock or later complications
- Lift and remove the battery from the cavity
- ⓘ If replacing the battery, make sure to use proper disposal methods.

Step 5 — Wheels



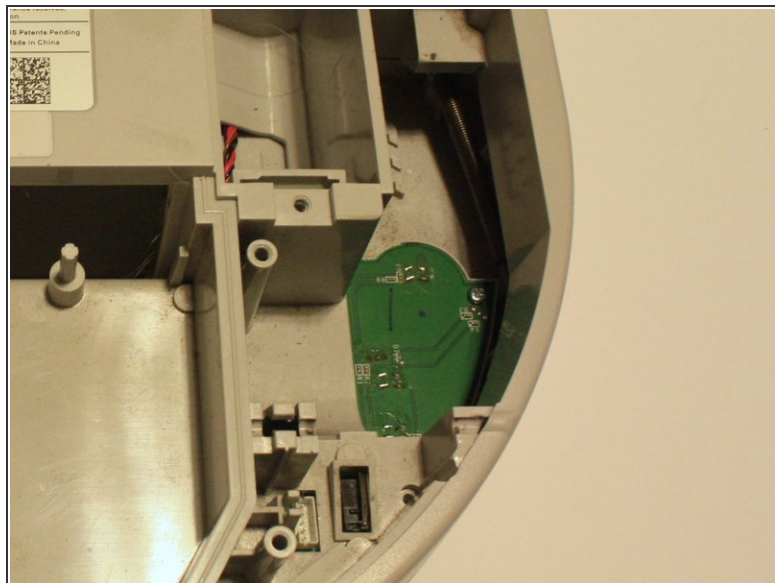
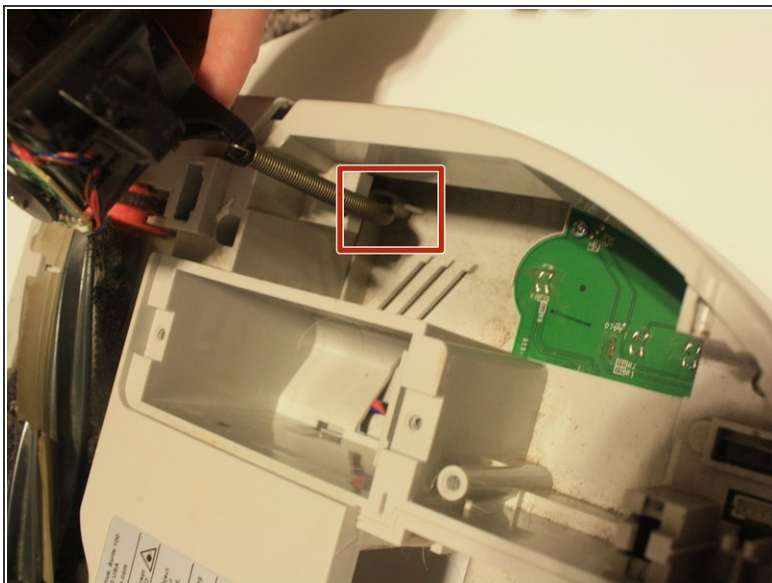
- Pinch and pull the white connector, indicated in the image, to disconnect the wheel from the robot. Repeat for both wheels

Step 6



- Slide out dowel rod connecting the wheel to the robot.

Step 7



- Lift the wheel so the spring is exposed
- ☑ Pay particular attention to how the wheel is placed to replicate during reinsertion
- Unhook the spring from robot
- Lift the wheel from the cavity

To reassemble your device, follow these instructions in reverse order.