



# Samsung Gear VR Focus Wheel Replacement

Replace the focus wheel to be able to zoom in and out while using the Gear VR.

Written By: Alfredo Aparicio



## INTRODUCTION

The Samsung Gear VR focuses on the connected mobile device by having the user rotate a wheel on top of the headset. This wheel rotates axles which in turn move the lenses closer or further away from the screen. If the wheel becomes difficult to turn it is possible that it has come off track and may need minor adjustment, or possible replacement. This guide contains the steps needed to access the lens focusing wheel for adjustment or replacement.

The motherboard partially sits on the inner mask piece of the headset and must be removed in order to remove the inner mask piece.

Caution is required while working on the headset as a wire harness connects the USB adapter to the motherboard. Care should be taken not to put any strain on the wire and to open the headset from right to left.



### TOOLS:

- [iFixit Opening Tools](#) (1)
- [Metal Spudger](#) (1)
- [Phillips #000 Screwdriver](#) (1)



### PARTS:

- [Focus Knob](#) (1)

## Step 1 — Front Phone Mount



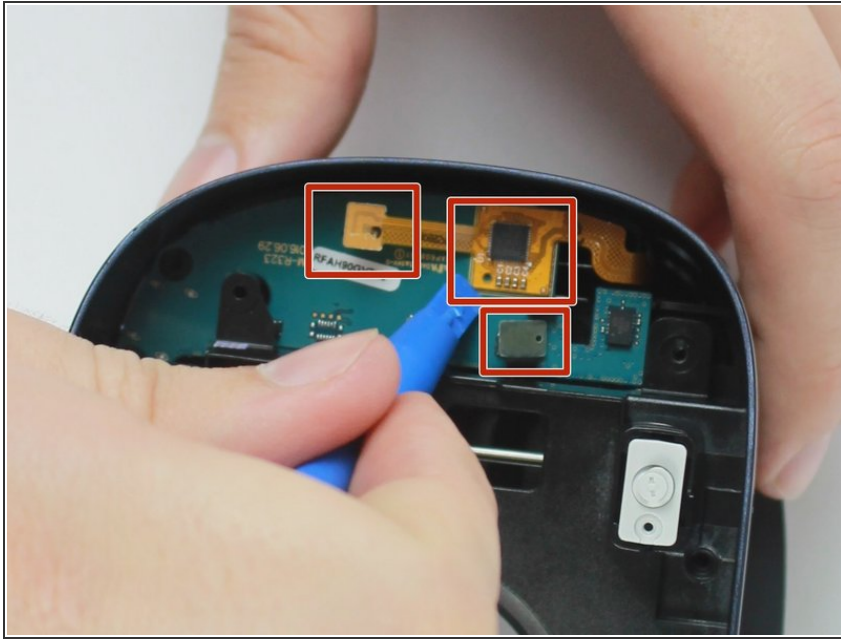
- Remove the front cover to access a plate that holds the phone in place during use.
- Remove the four corner screw covers with a metal spudger to reveal four screws.
- Remove the sticker located at the top center to reveal two additional screws.

## Step 2



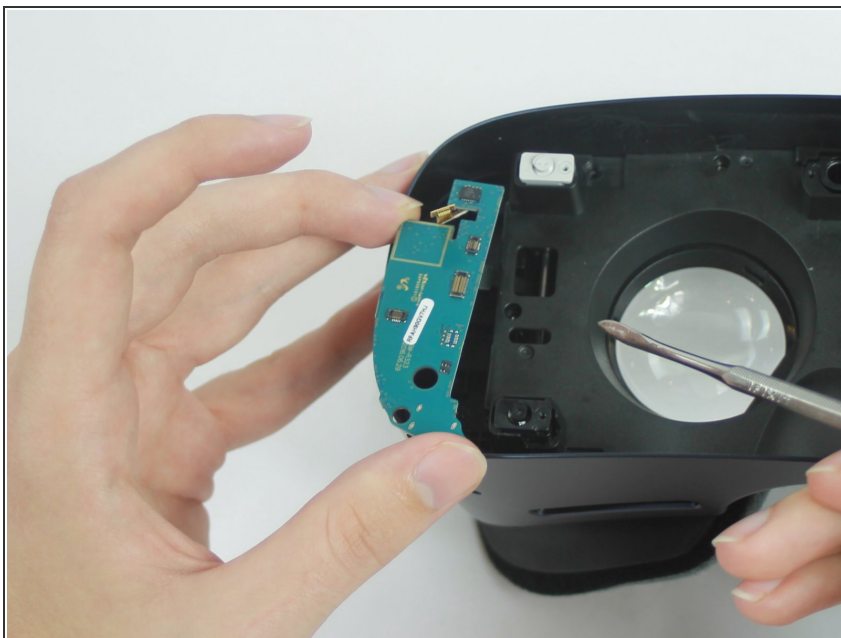
- Using the PH000 tip remove the six 0.5 cm screws that secure the front phone mount.
  - After the six 0.5 cm screws are completely removed lift the front phone mount up and to the left.
- ⚠ When handling your equipment be careful not to strain the wire harness located on the left side of the headset.

## Step 3 — Motherboard



- Use the blue plastic opening tool to remove the rest of the the pop connectors from the motherboard.
- ⓘ The larger gold connector is lightly glued down so it may take more effort to remove than the others.

## Step 4



- You can now remove the motherboard from the mask.
- ⚠ Make sure that nothing is connected to the motherboard before you try to remove it as pulling it with something connect might brake the connections.

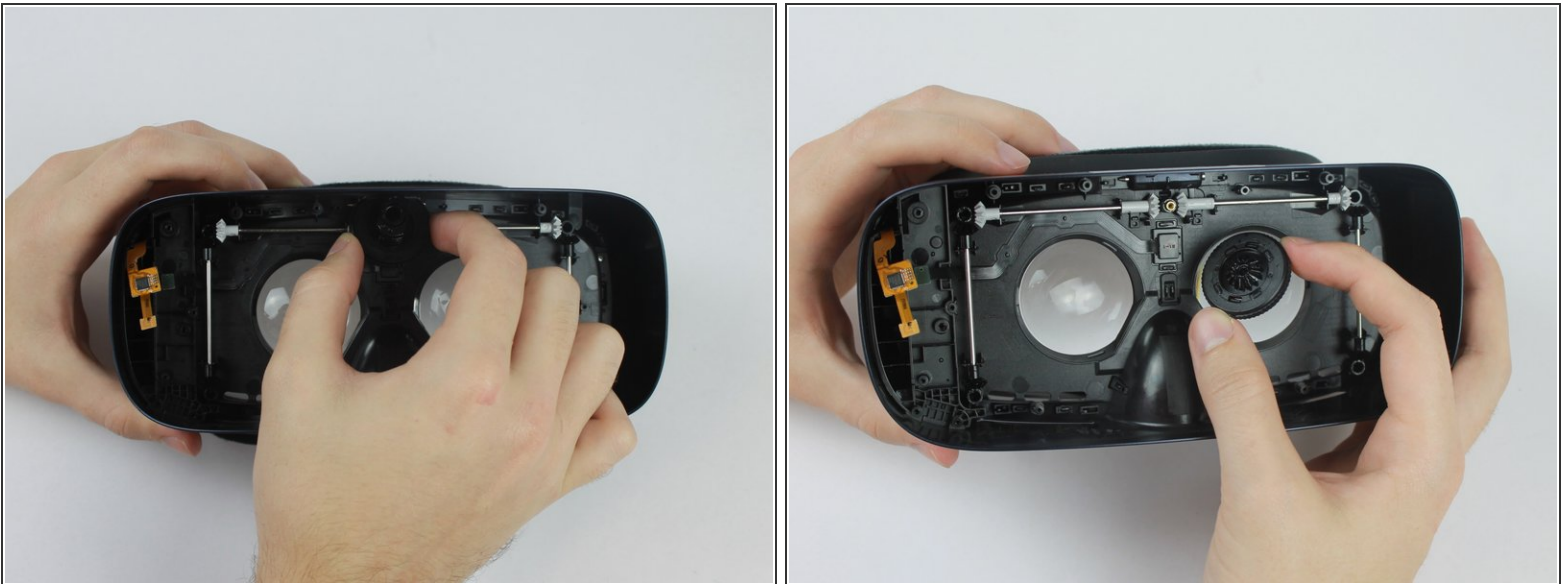


## Step 5 — Inner Mask



- Using the PH000 tip remove the eight 0.5 cm screws from the Inner Mask
- Carefully remove the Inner Mask by pulling it from the inner side of the lenses socket.

## Step 6 — Focus Wheel



- Use your fingers to gently remove focus wheel.

To reassemble your device, follow these instructions in reverse order.