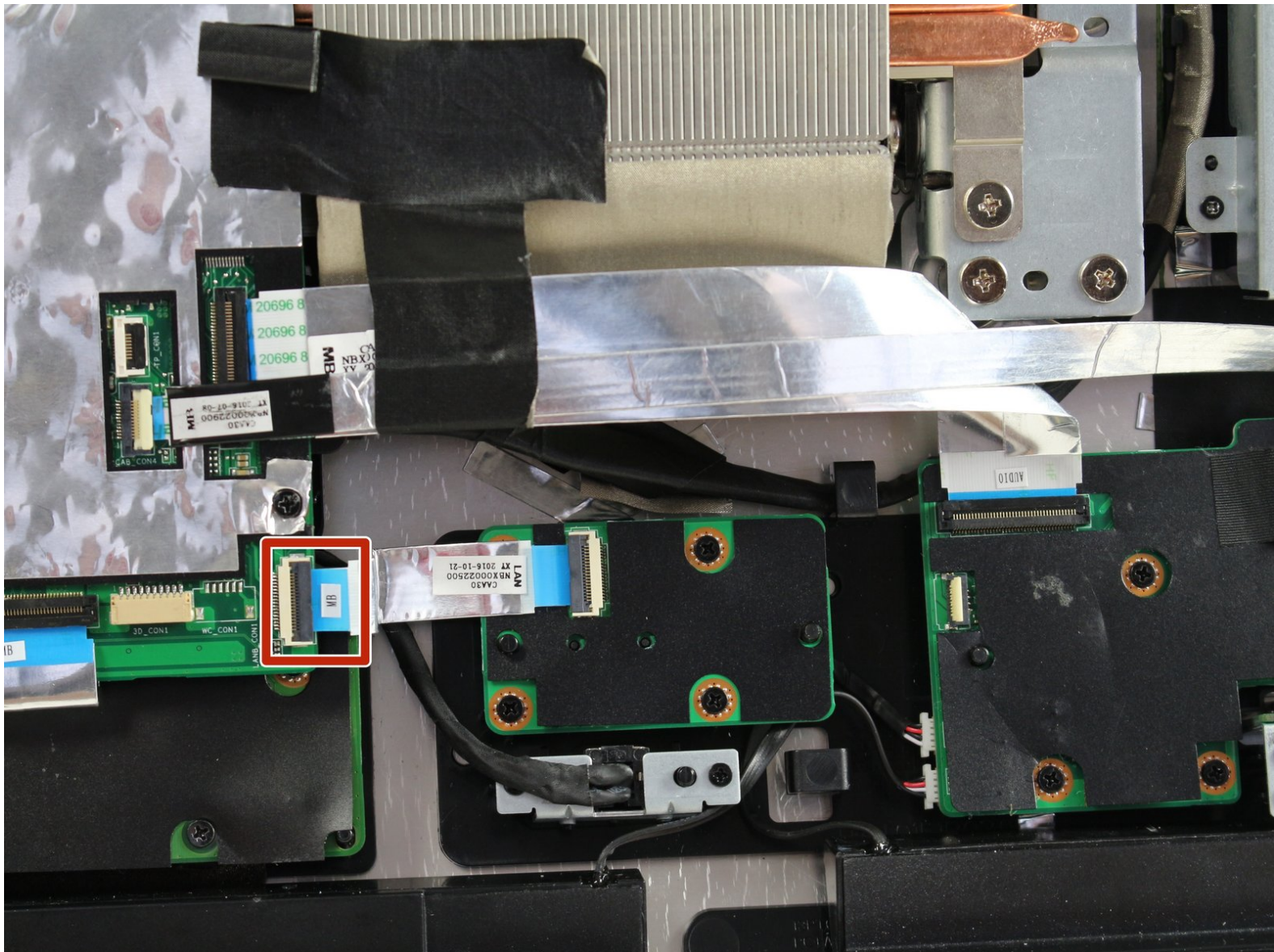




Asus Zen AiO Pro Z240IC Ethernet/LAN Port Replacement

How to replace the Ethernet/LAN board and port on the Asus Zen AiO Pro Z240IC.

Written By: Sahil Sharma



INTRODUCTION

This guide will teach you how to replace the Ethernet/LAN board to restore internet or device connectivity. No prior knowledge is required.



TOOLS:

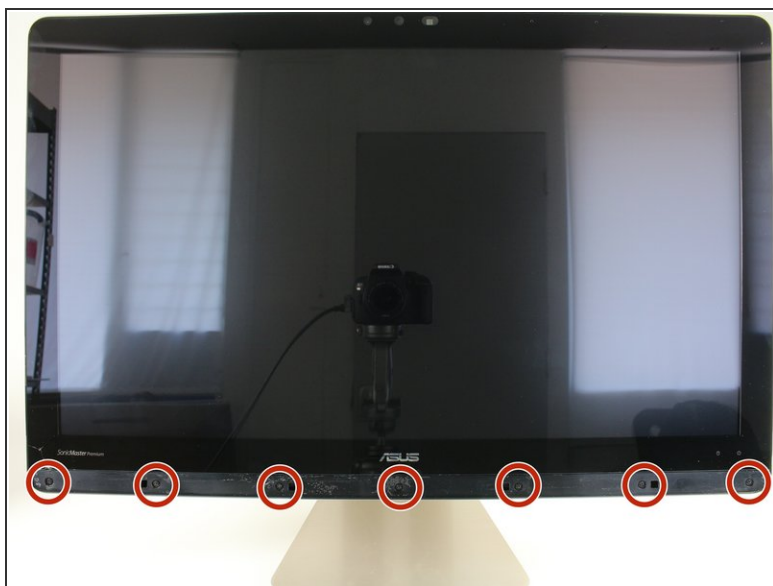
- [Phillips #1 Screwdriver](#) (1)
 - [iFixit Opening Tools](#) (1)
-

Step 1 — Screen



- Use the plastic opening tool to pry off the black plastic strip at the bottom of the screen by wiggling the tool between the strip and the screen.
- ⓘ The strip is held in place with adhesive. You may hear a crackling sound as the strip is peeled off.
- Run the opening tool slowly along the base of the screen, peeling the black strip back, until the opposite end of the screen is reached.



Step 2



- Use a Phillips #1 screwdriver to remove the seven (7) 4.8 mm screws from the base of the screen.

Step 3



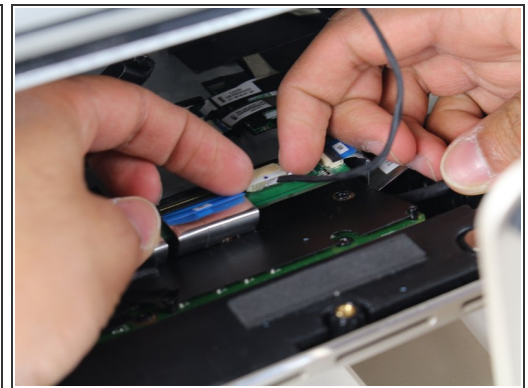
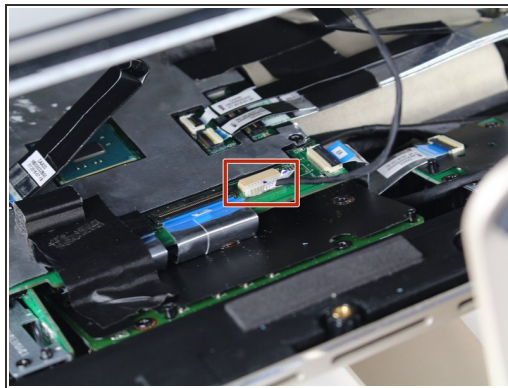
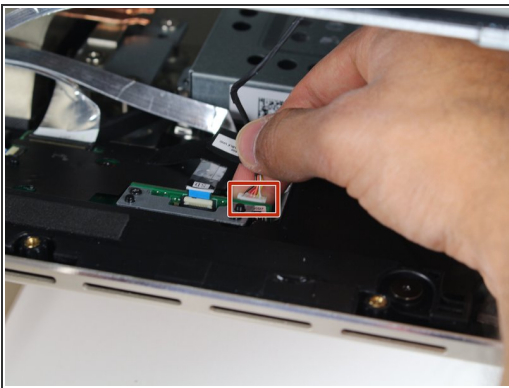
- Place the computer on its back, facing up.
 - Wedge the plastic opening tool in between the screen and the bezel of the aluminum computer casing.
 - Move the tool along the entire edge of the screen with an up-and-down prying motion to loosen the screen from the casing. Do not lift the entire screen away from the computer yet.
-  The screen is held in place by plastic tabs. These will create a popping sound when loosened.
-  The screen assembly will flex as it is pried off. Do not bend the screen too far or the glass screen could shatter.

Step 4



- Lift the screen from the bottom edge by about 6 inches. Prop it open with one hand.
- Look inside the computer and locate five (5) cables that connect the embedded components of the screen (camera, microphone, etc.) to the rest of the computer.

Step 5



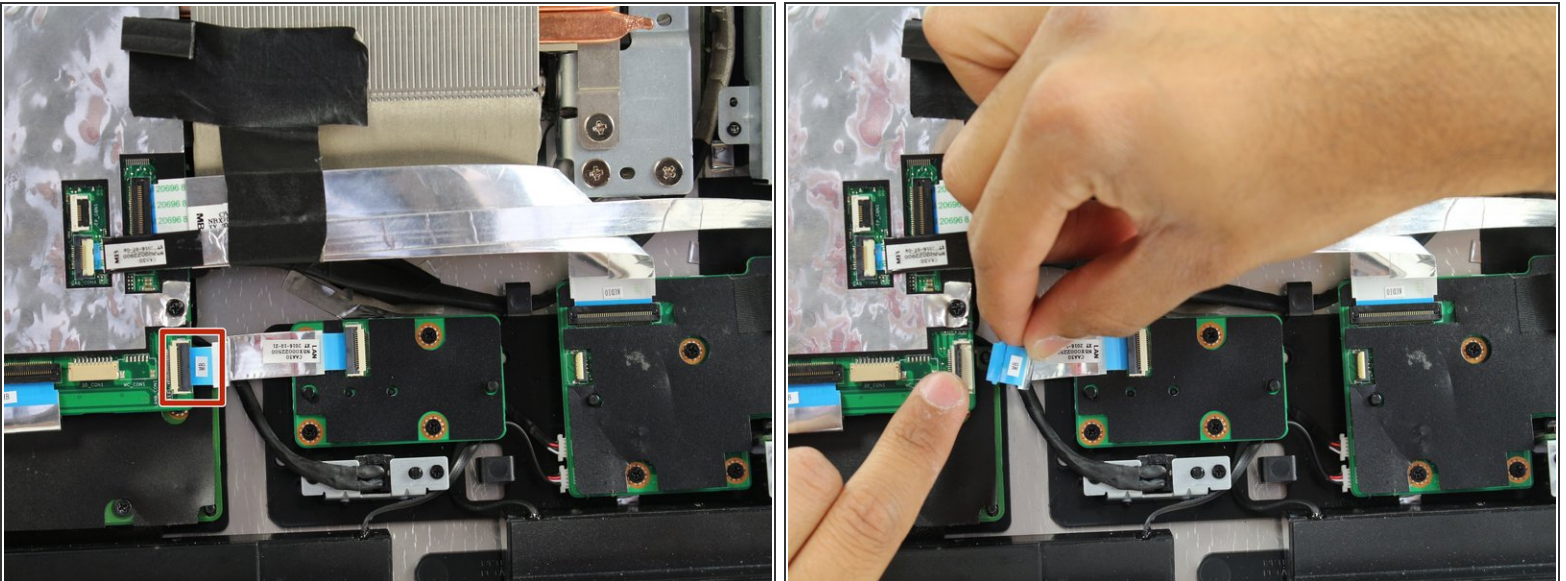
- Remove the two (2) cables that are connected to the computer by white, rectangular terminal blocks by pulling straight out on the plug.
- ⓘ The cables and wires in these steps are delicate; do not tug on the individual wires that make up each cable.

Step 6



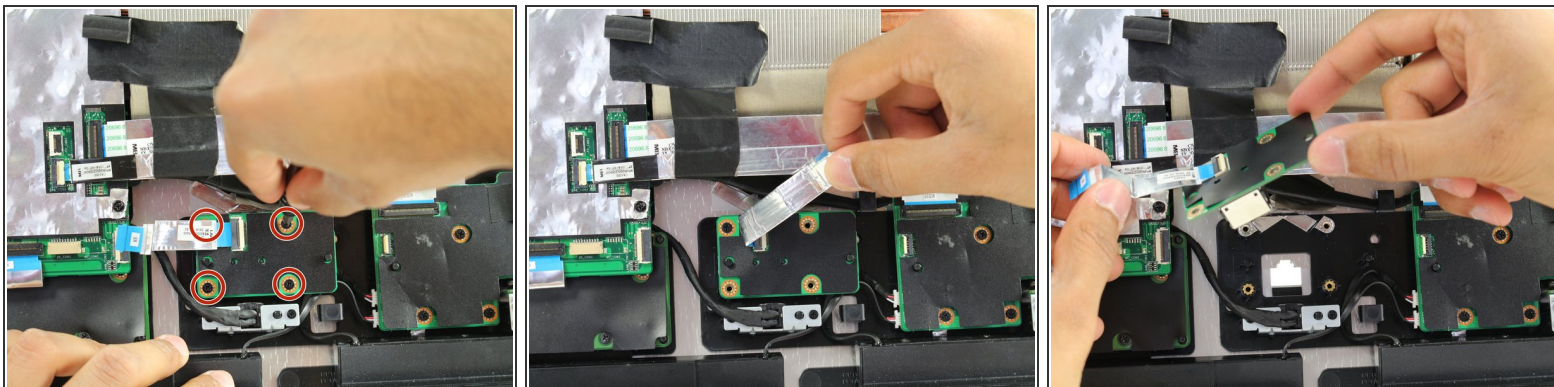
- Use a finger to lift the plastic locking flaps that hold the remaining three (3) ribbon cables in place.
- Remove the cables from their terminals by slipping them away from their connectors.
- ☑ The black line on the ribbon cables mark the connecting region. When reinstalling, insert the cable up to this line so the locking flap covers it.

Step 7 — Ethernet/LAN Port



- Disconnect the ribbon cable from the side that has "MB" labeled on it by lifting up on the black locking flap and pulling the cable out of its terminal.
- ☑ The black line on the ribbon cable marks the connecting region. When reinstalling, insert the cable up to this line so the locking flap covers it.

Step 8



- Remove the four (4) 3.2 mm screws with a Phillips #1 screwdriver.
- ⓘ One screw is hidden under the ribbon cable.
- Lift the board gently upwards to remove it from the base of the computer.

To reassemble your device, follow these instructions in reverse order.