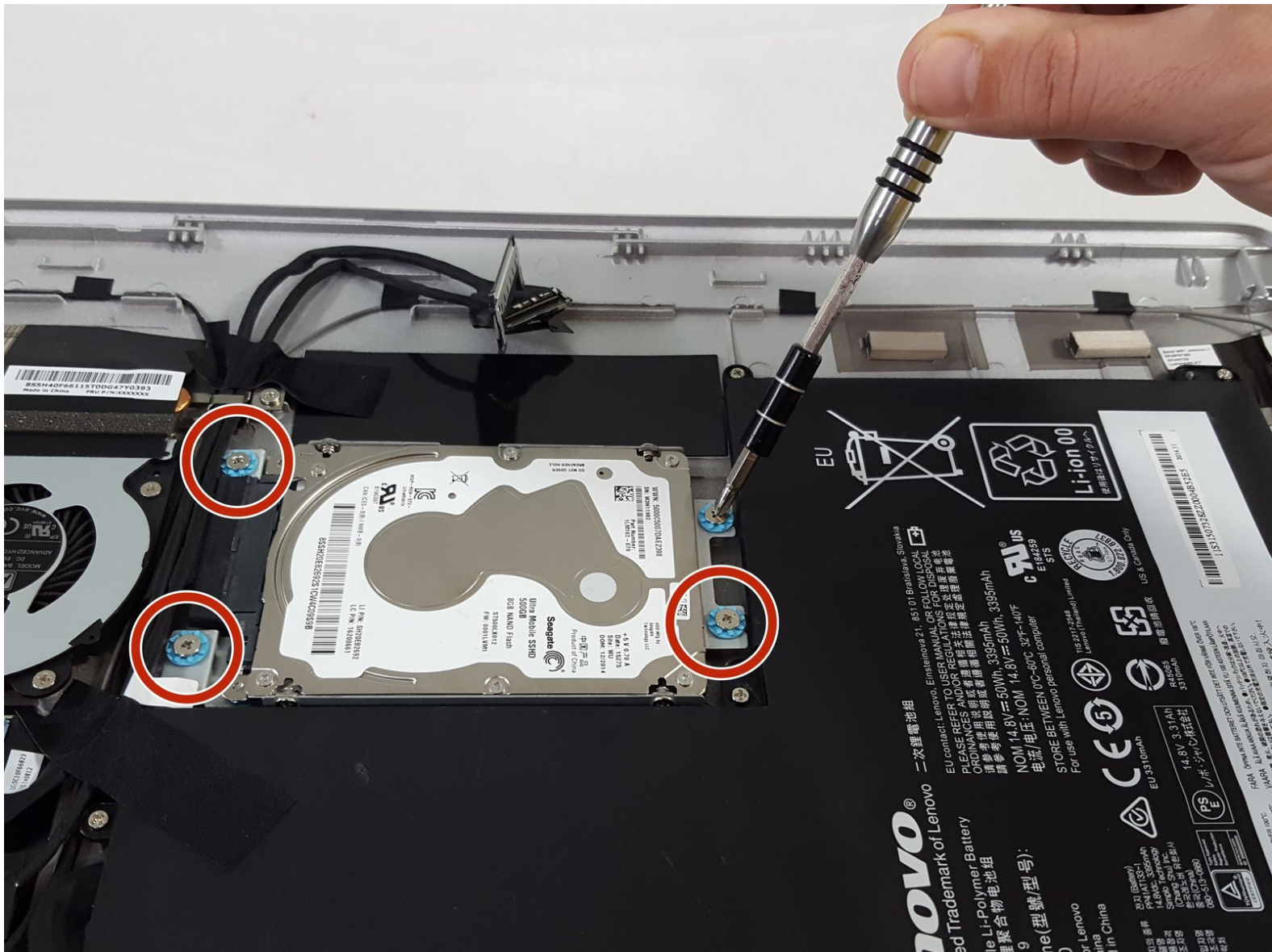




# Lenovo Horizon 2s HDD Replacement

Disassemble the rear casing and replace the HDD in your Lenovo Horizon 2s.

Written By: Zak Kazakos



## INTRODUCTION

Bring you two-in-one tablet back to life with a new hard drive.

This guide will provide step-by-step instructions on how to detach the rear panel, which is designed to prevent damage to interior components. This guide will also provide you instructions on how to remove and mount a new hard drive.



### TOOLS:

- [iFixit Opening Tools](#) (1)
- [Phillips #1 Screwdriver](#) (1)



### PARTS:

- [Lenovo 2s Horizon Rear Casing](#) (1)
- [HDD/SSD](#) (1)

## Step 1 — Rear Case



- Flip the device so the rear case is facing upward.
- With the plastic opening tool carefully pry the plastic piece shown in the picture, until it is completely removed from the case.

## Step 2



- Using your fingers, carefully remove the rubber boot from the right side of the rear case.
- With the Phillips #1 head, remove the screw placed directly under the rubber boot.

### Step 3



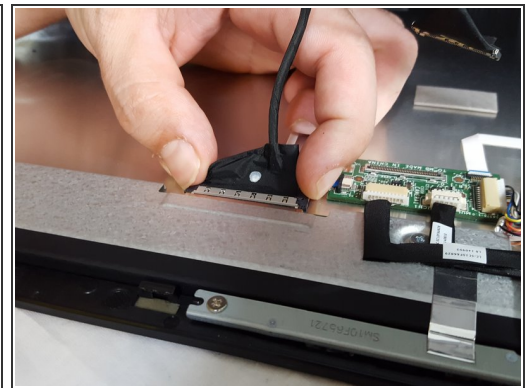
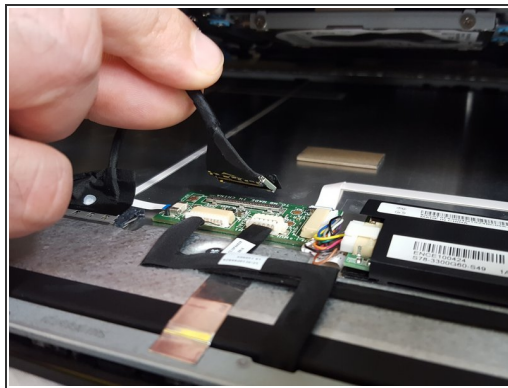
- Using the plastic opening tool, push the display screen on the device forward until it separates from the rear casing.

## Step 4



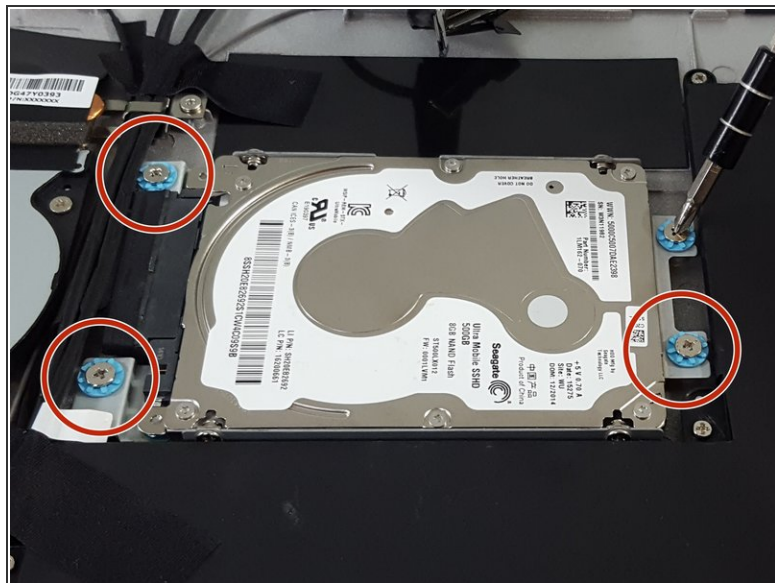
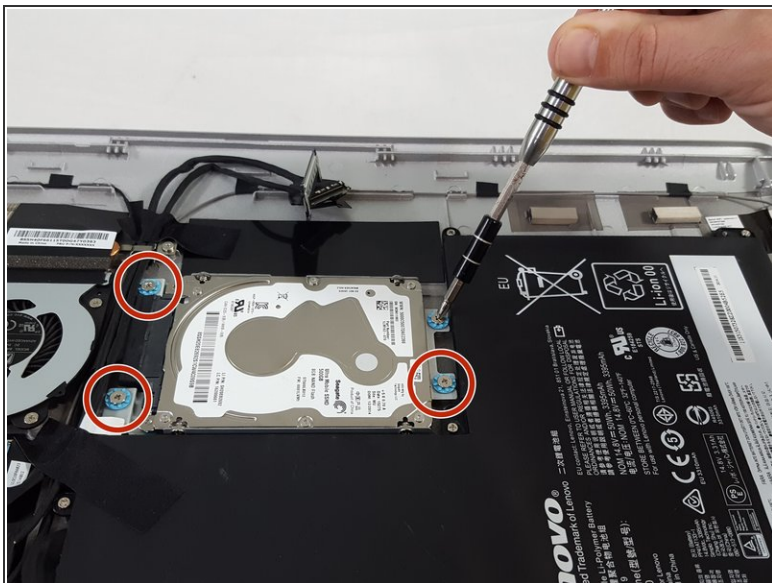
- Using the plastic opening tool, carefully pry around the perimeter of the screen until the entire screen is completely separated from the rear casing.

## Step 5



- Before completely separating the screen from the rear casing you will carefully detach two wires that are connected to both sides of the device. This will allow you to completely separate the rear casing from screen.

## Step 6 — HDD



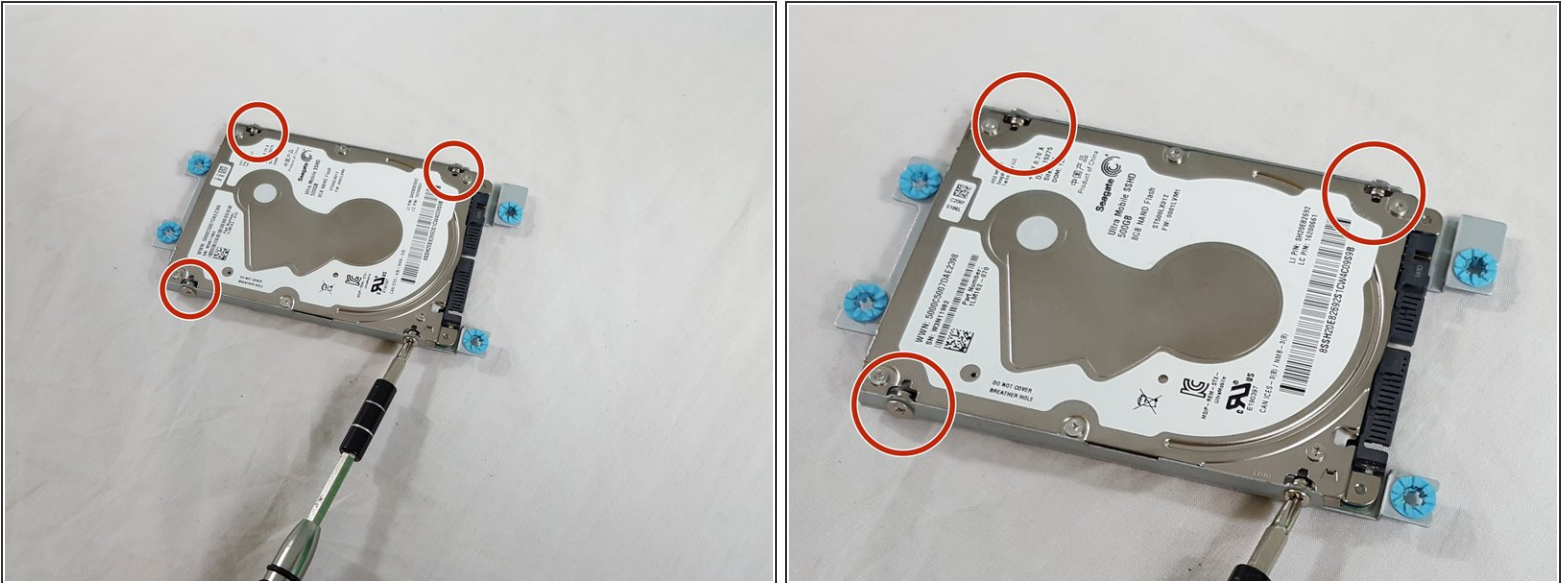
- Using your Philips head screw driver with the number 1 head. Carefully unscrew the four M2-6mm screws that are circled in the picture.

## Step 7



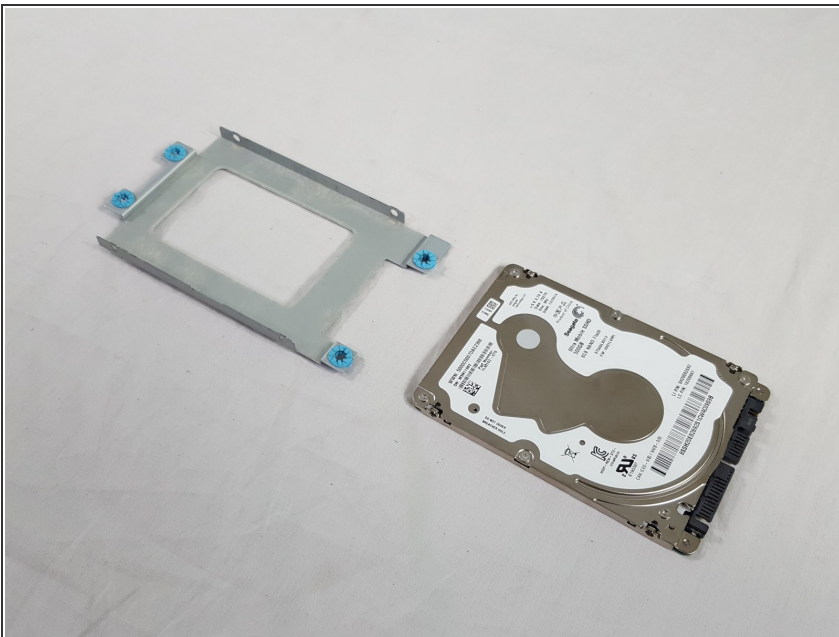
- Now carefully lift the hard-drive that is still attached to the boot from the rear casing.

## Step 8



- Now that the hard-drive is detached from the rear casing you will still have to detach the hard-drive from its boot. Again using the Philips screwdriver with the number one head. Carefully unscrew the four M2-6mm screws that are circled in the picture.

## Step 9



- Now that the screws are detached. You can now carefully lift the hard-drive from the metal boot.

To reassemble your device, follow these instructions in reverse order.