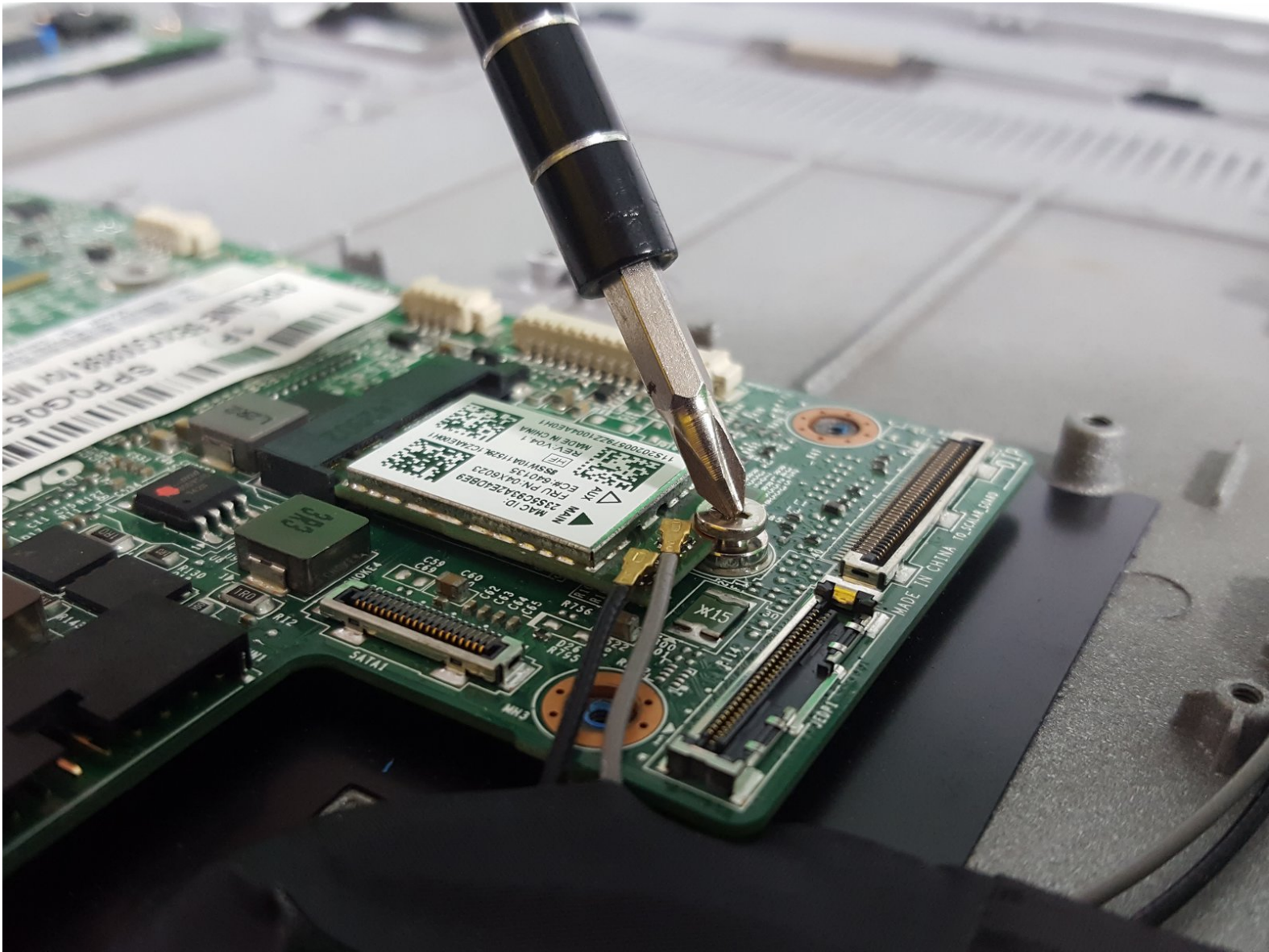




# Lenovo Horizon 2s Motherboard Replacement

How to replace the motherboard in your Lenovo Horizon 2s.

Written By: Dustin Carro



## INTRODUCTION

Use this guide to replace a faulty motherboard in your two-in-one tablet.

This guide will show you how to remove the rear casing of your tablet and how to remove all of the internal components.



### TOOLS:

- [iFixit Opening Tools](#) (1)
- [Phillips #1 Screwdriver](#) (1)



### PARTS:

- [Lenovo 2s Horizon Motherboard](#) (1)

## Step 1 — Rear Case



- Flip the device so the rear case is facing upward.
- With the plastic opening tool carefully pry the plastic piece shown in the picture, until it is completely removed from the case.

## Step 2



- Using your fingers, carefully remove the rubber boot from the right side of the rear case.
- With the Phillips #1 head, remove the screw placed directly under the rubber boot.

### Step 3



- Using the plastic opening tool, push the display screen on the device forward until it separates from the rear casing.

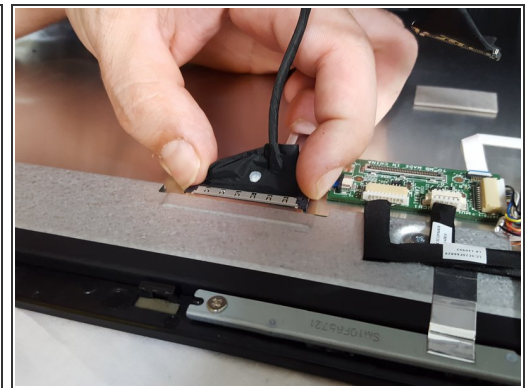
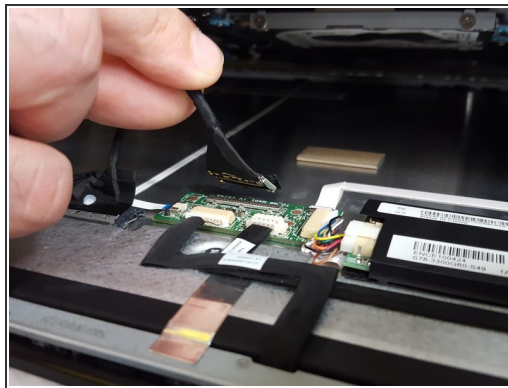
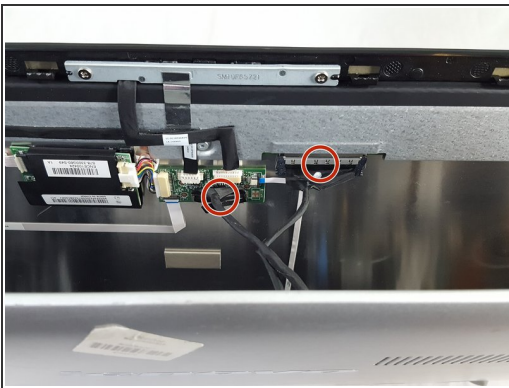


## Step 4



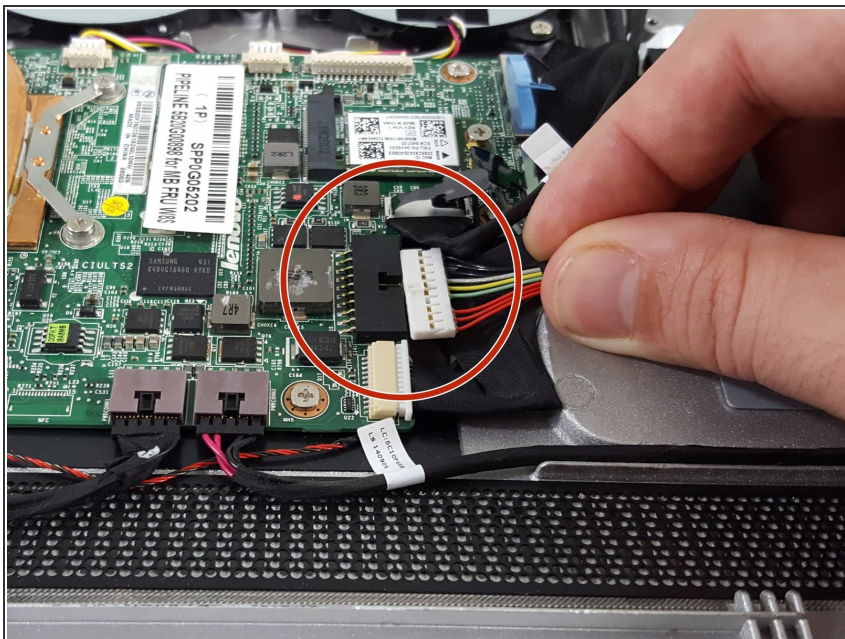
- Using the plastic opening tool, carefully pry around the perimeter of the screen until the entire screen is completely separated from the rear casing.

## Step 5



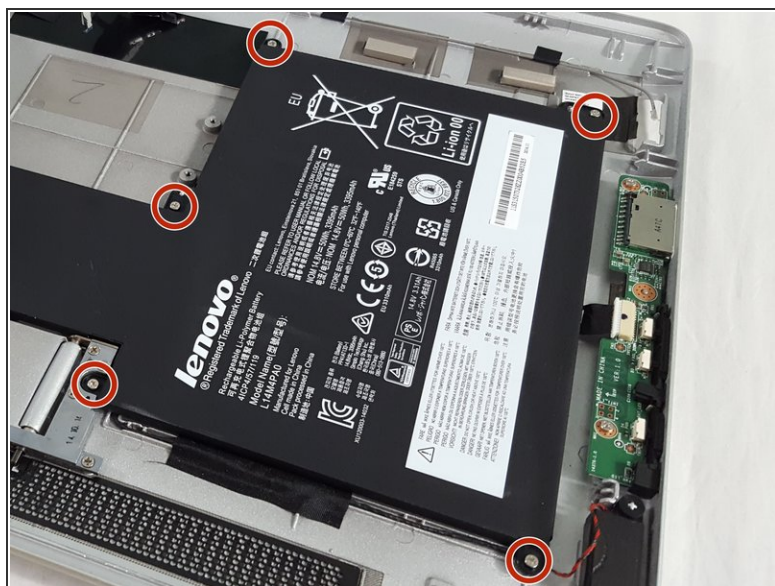
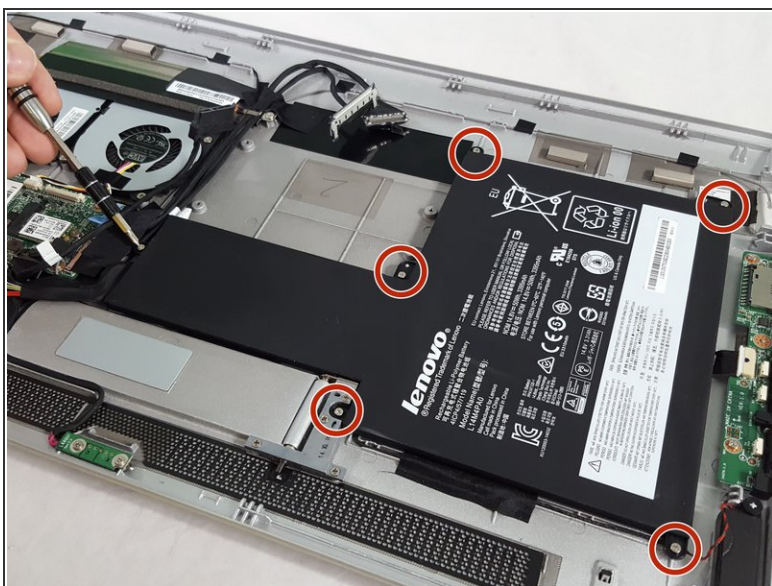
- Before completely separating the screen from the rear casing you will carefully detach two wires that are connected to both sides of the device. This will allow you to completely separate the rear casing from screen.

## Step 6 — Battery



- Using your fingers carefully and slowly disconnect the wire shown here from the motherboard.

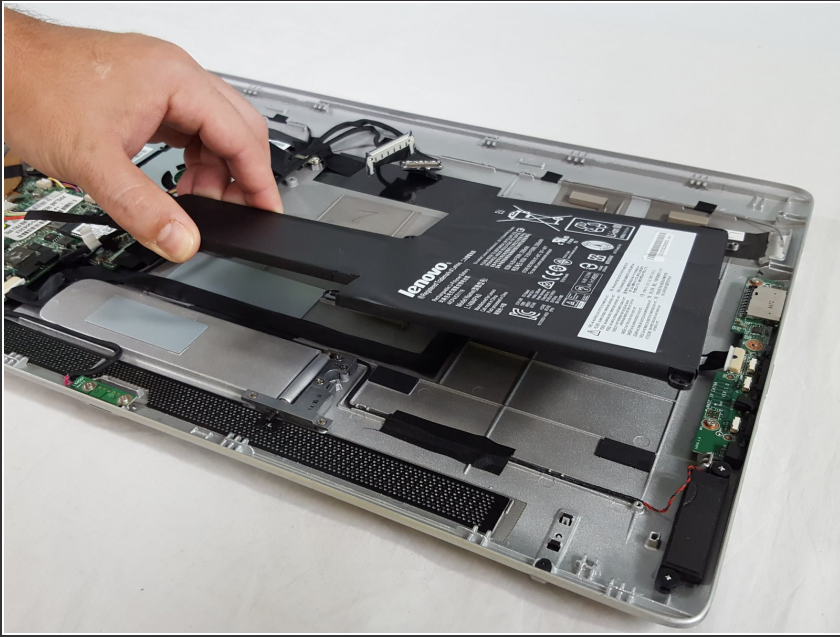
## Step 7



- Using the Philips screw driver with the number 1 head. Carefully unscrew the six M2- 6mm screws that are circled in the picture.

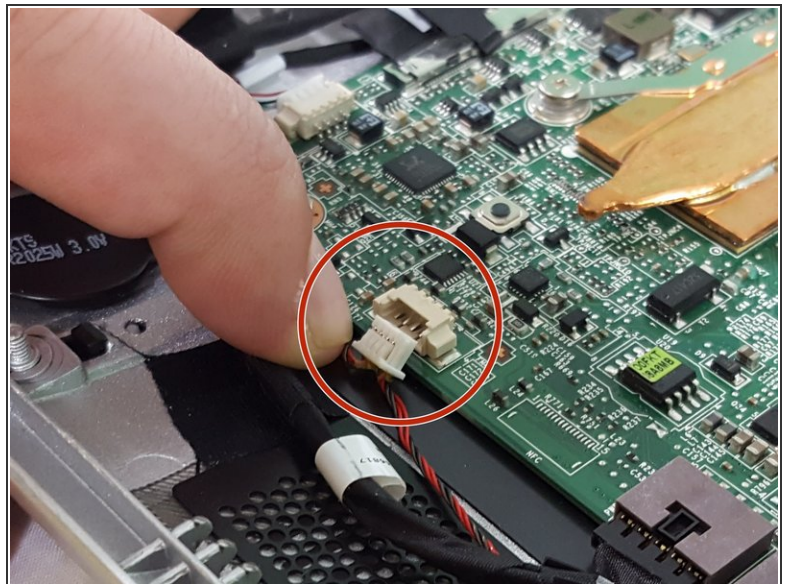
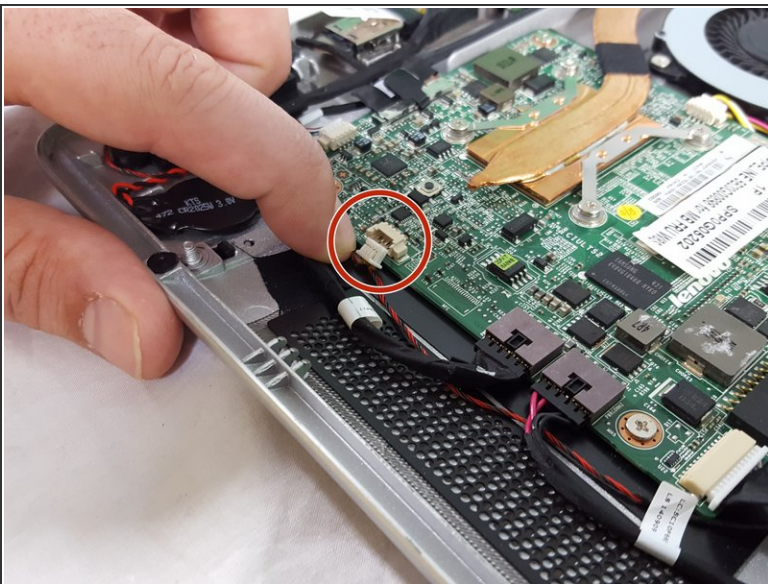


## Step 8



- Carefully lift the battery from the rear casing.

## Step 9 — Speaker



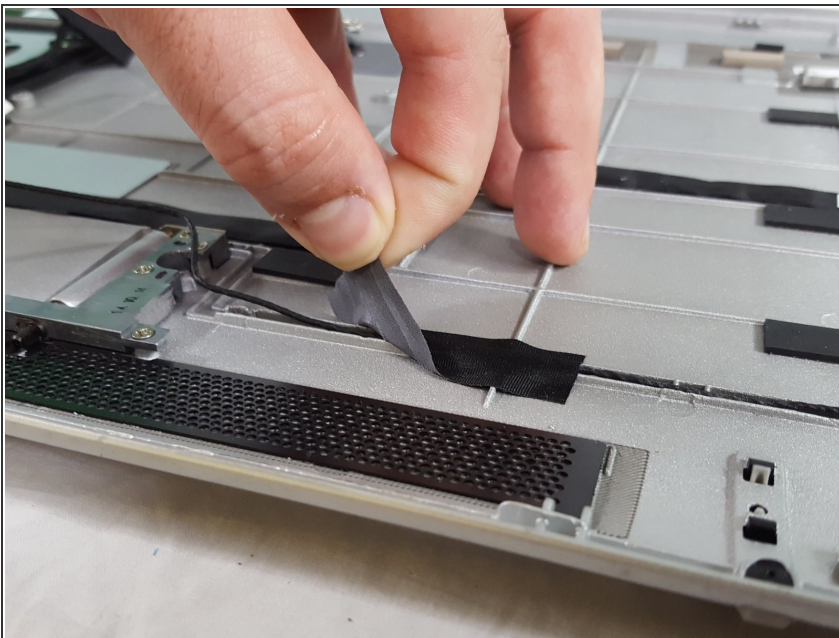
- Locate the intertwined black and red wires that connect the two small, black speakers and the motherboard, as shown in the picture.
- Disconnect this wire from the motherboard by carefully pulling it out.

## Step 10



- Locate the speakers along the bottom of the device.
- The speakers are connected by two knobs on each side. Carefully lift the speakers to detach them from the tablet.

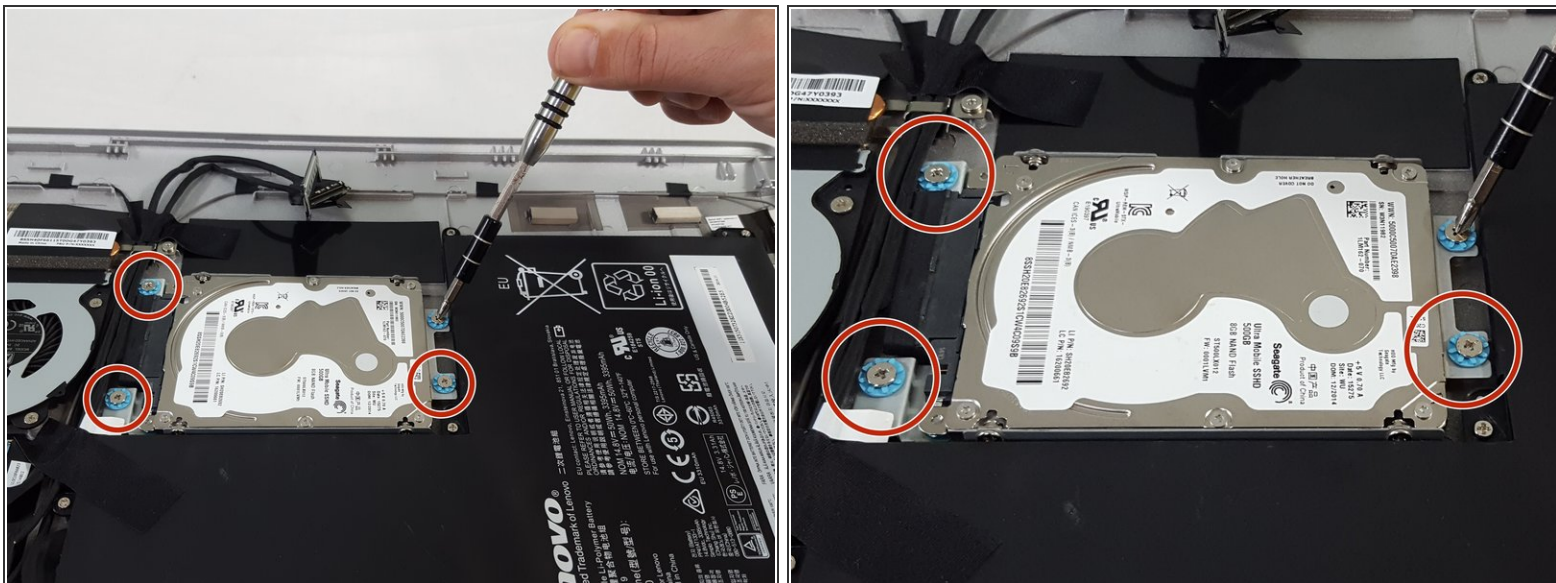
## Step 11



- Finally, locate the tape that keeps the speaker wires in the grooves of the device.
- Peel the tape off as shown and your speakers are now completely disconnected from the tablet.



## Step 12 — HDD



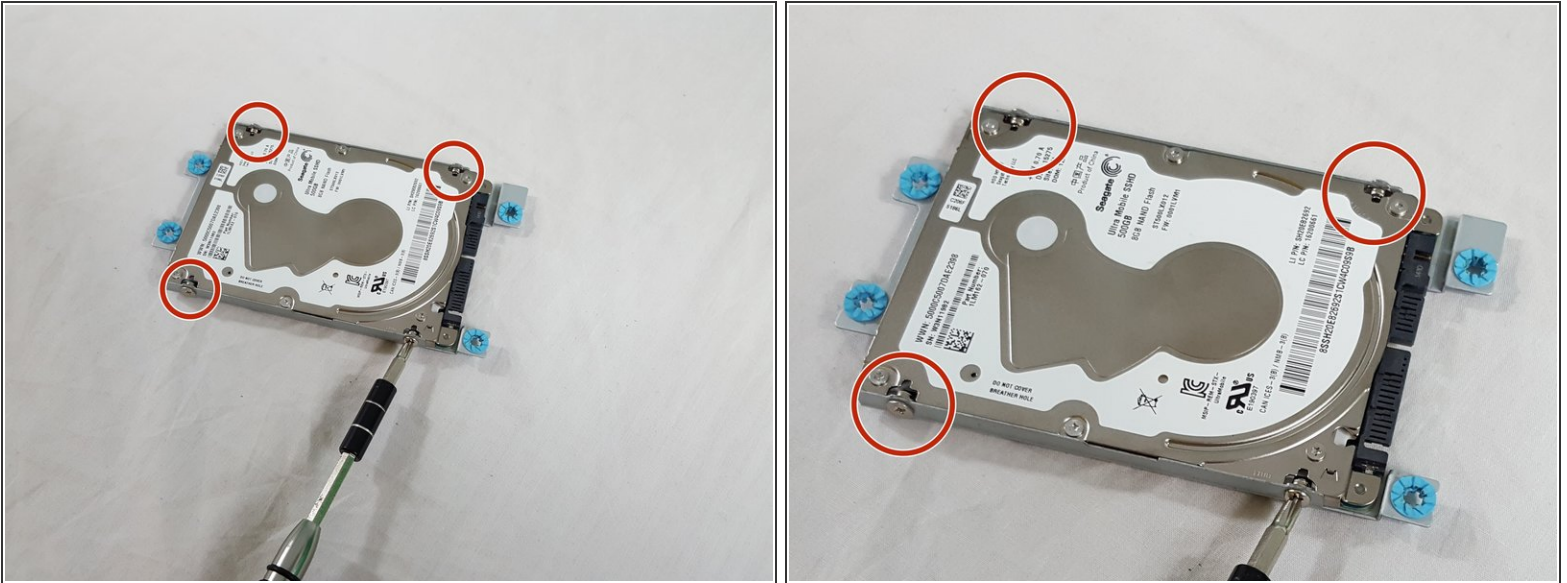
- Using your Philips head screw driver with the number 1 head. Carefully unscrew the four M2-6mm screws that are circled in the picture.

## Step 13



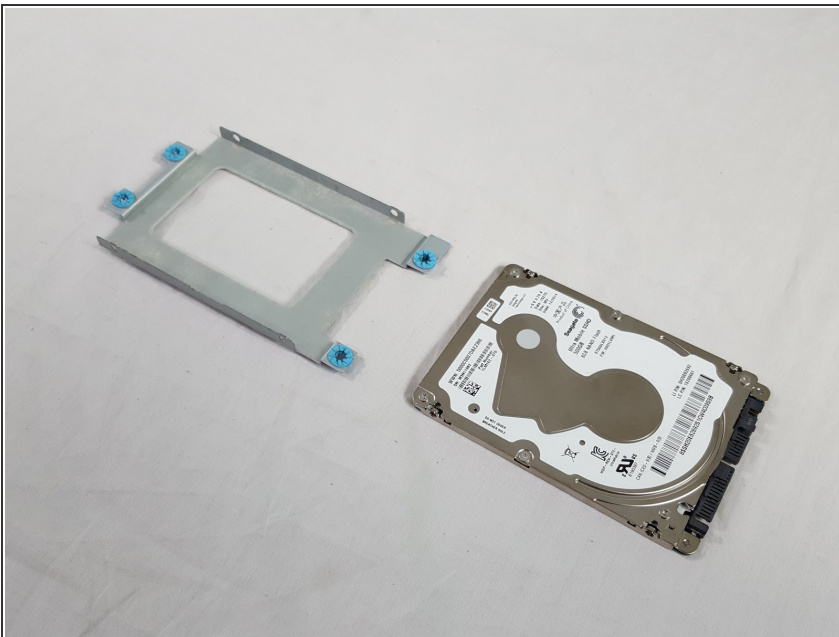
- Now carefully lift the hard-drive that is still attached to the boot from the rear casing.

## Step 14



- Now that the hard-drive is detached from the rear casing you will still have to detach the hard-drive from its boot. Again using the Philips screwdriver with the number one head. Carefully unscrew the four M2-6mm screws that are circled in the picture.

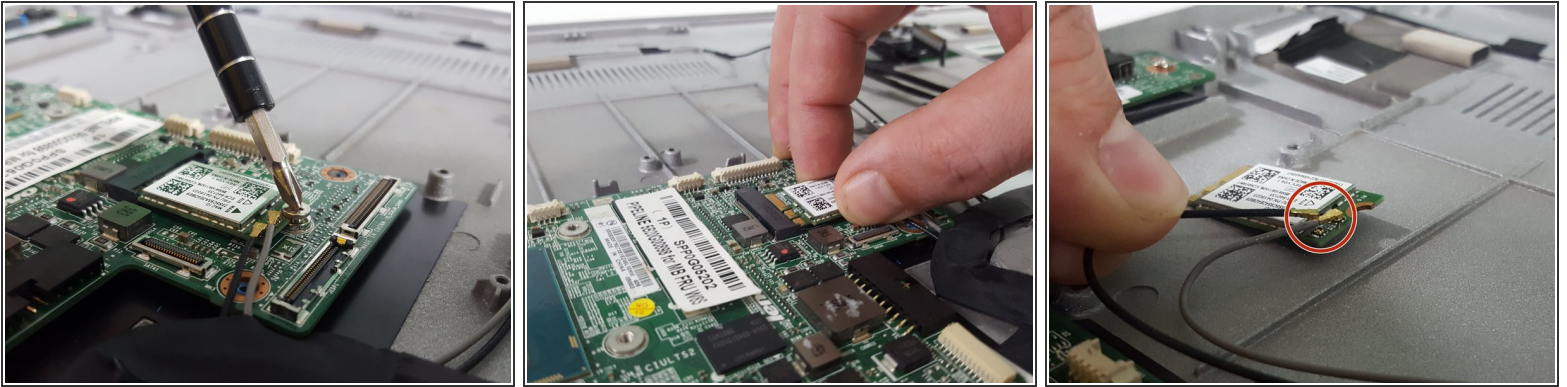
## Step 15



- Now that the screws are detached. You can now carefully lift the hard-drive from the metal boot.

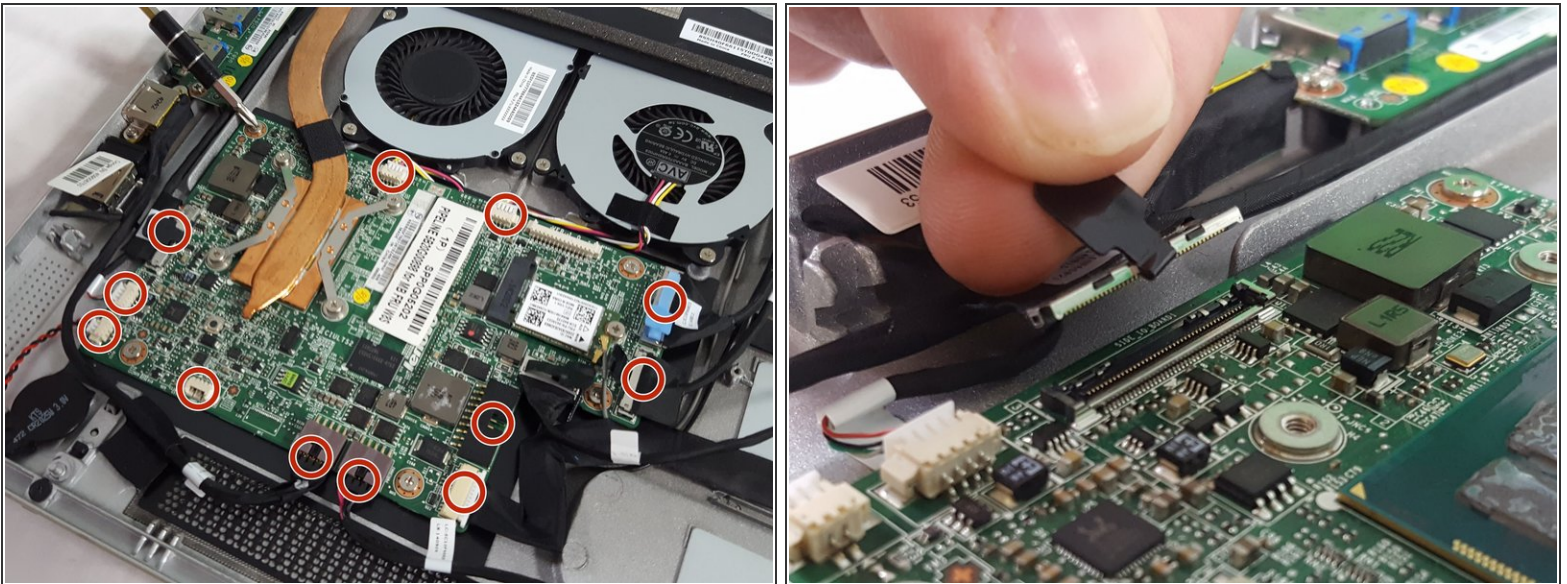


## Step 16 — Motherboard



- With the Phillips #1 head, remove the M2-6mm screw securing the network card.
- Carefully remove by sliding the network card out from the motherboard.
- Carefully remove the wires connecting to the network card with light pressure.

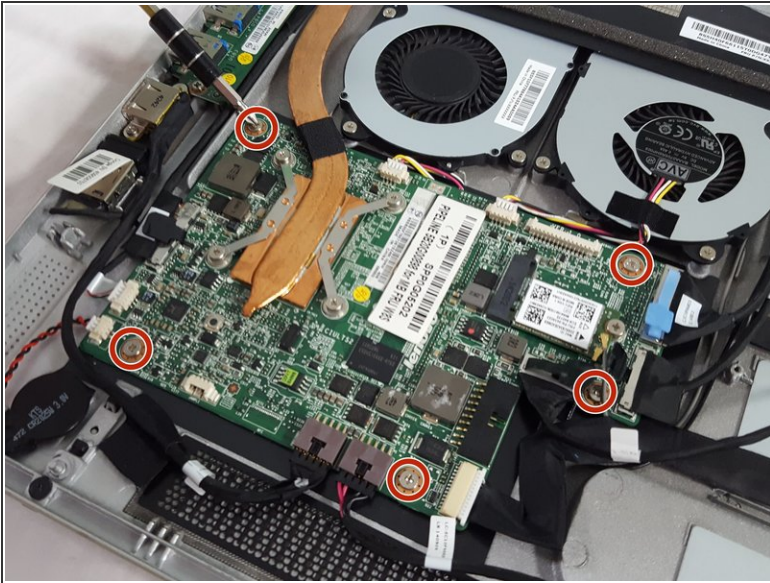
## Step 17



- Remove each of the highlighted plugs on the motherboard and set them off the motherboard.
- Use light pressure to remove the plugs, be gentle not to hurt any connections.
- Some plugs have tabs as shown on the picture, pull on these tabs lightly to remove the plugs.



## Step 18



- With the Phillips #1 head, remove the M2-6mm screws seating the motherboard into the case.

## Step 19



- Once all plugs and screws are removed and out of the way, carefully lift the motherboard from the tablet.
- ⓘ Try to only touch the edges of the motherboard because the circuits can be fragile.

To reassemble your device, follow these instructions in reverse order.