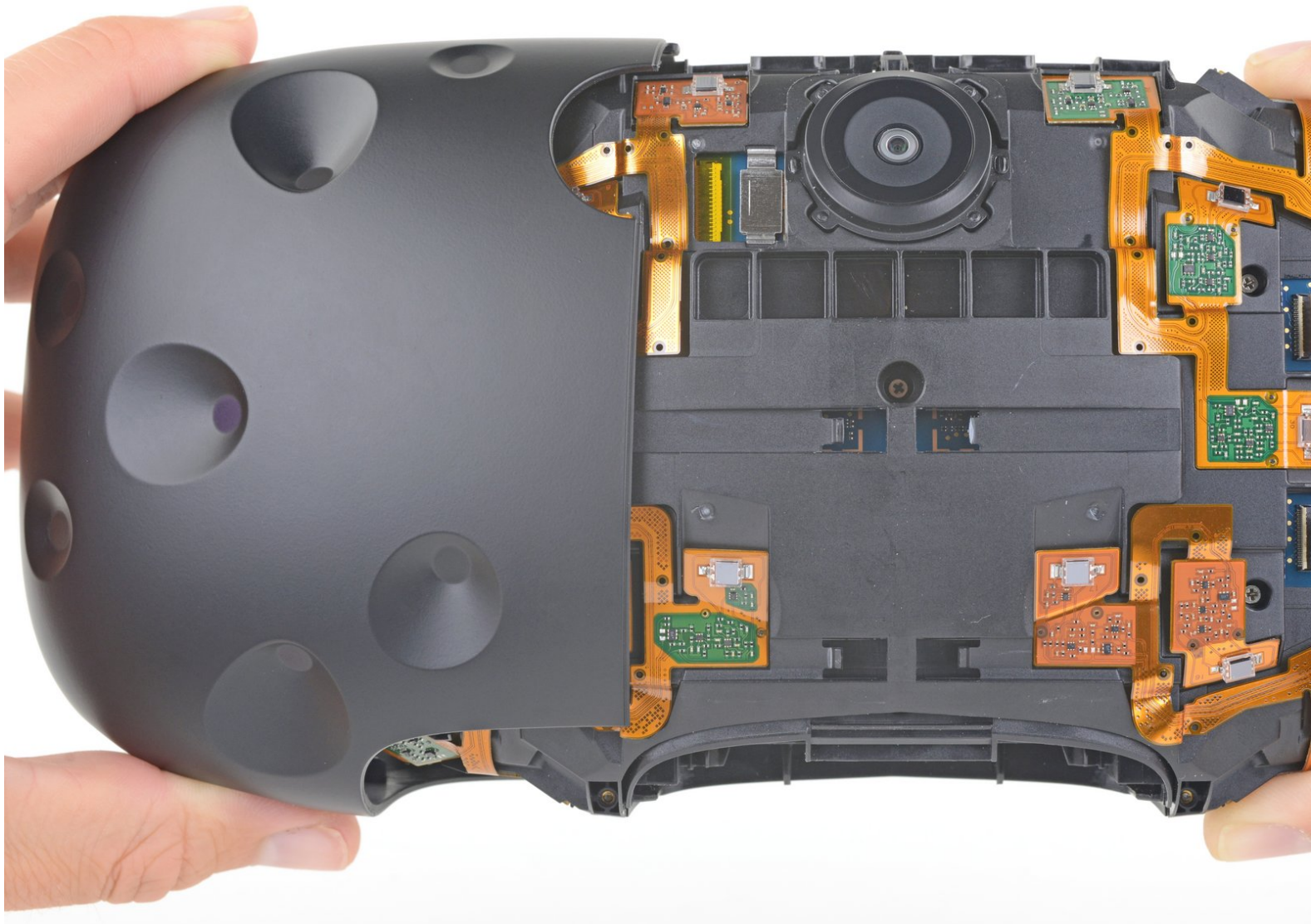




HTC Vive Outer Shell Replacement

How to remove or replace the outer shell on an HTC Vive.

Written By: Adam O'Camb



INTRODUCTION

Use this guide to remove or replace the outer shell on an HTC Vive.



TOOLS:

- [T5 Torx Screwdriver](#) (1)
- [Spudger](#) (1)



PARTS:

- [HTC Vive Outer Shell](#) (1)

Step 1 — Open the cable compartment



 Be sure to power down and disconnect your Vive before beginning.

- Place a finger on the top edge of the compartment cover assembly and slide the assembly toward the front of the Vive until it comes loose from the headset.
- Lift the cover away from the headset and slide it up the cables until it's out of the way.

Step 2 — Unplug the HDMI cable



- Lift the HDMI cable straight up to unplug it from the headset.

Step 3 — Unplug the remaining cables



- Repeat the lifting and unplugging process with the remaining USB, power, and audio cables.

Step 4 — Unscrew the outer shell



- Use tweezers to remove the small stickers over the four screws securing the outer shell.
- Use a T5 Torx driver to remove the four 3.4 mm-long screws securing the outer shell.

Step 5 — Remove the outer shell



- Use the flat end of a spudger to pry up the top edge of the right half of the outer shell, behind the component cover and near the seam in the center, until it is unclipped from the headset.

Step 6



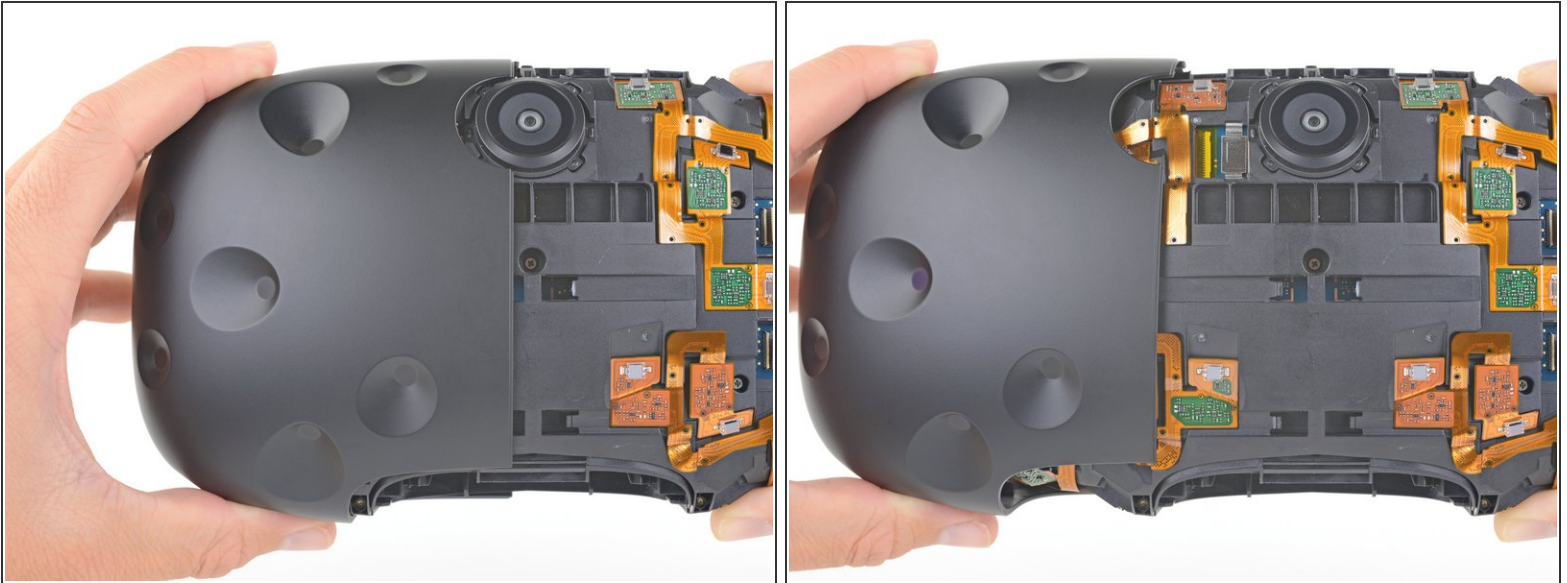
- Grasp the right half the outer shell and pull it to the right and toward the front of the headset until you feel the clips on the front of the cover release.
- If the shell is difficult to remove, try prying along the seam with the flat end of a spudger to release the clips.

Step 7



- Slide the right side of the outer shell to the right and off of the headset.

Step 8



- Repeat the last three steps for the left side of the outer shell and remove it.

Compare your new replacement part to the original part—you may need to transfer remaining components or remove adhesive backings from the new part before installing.

To reassemble your device, follow the above steps in reverse order.

Take your e-waste to an [R2 or e-Stewards certified recycler](#).

Repair didn't go as planned? Check out our [Answers community](#) for troubleshooting help.