



Kodak Easyshare C183 Lens Assembly Replacement

This is the same camera where I previously changed the LCD. Once I replaced the LCD I noted that the camera was giving me a Lens error.

Written By: oldturkey03





TOOLS:

- [Phillips #00 Screwdriver](#) (1)
- [iFixit Opening Tools](#) (1)
- [Soldering Iron](#) (1)



PARTS:

- [Replacement Lens Part No. 8H2933](#) (1)

Step 1 — Lens



- Remove the batteries, memory card and wrist strap, if so equipped.
- Remove the three Phillips screws on the bottom.
- Remove the two Phillips screws on the right hand side.

Step 2



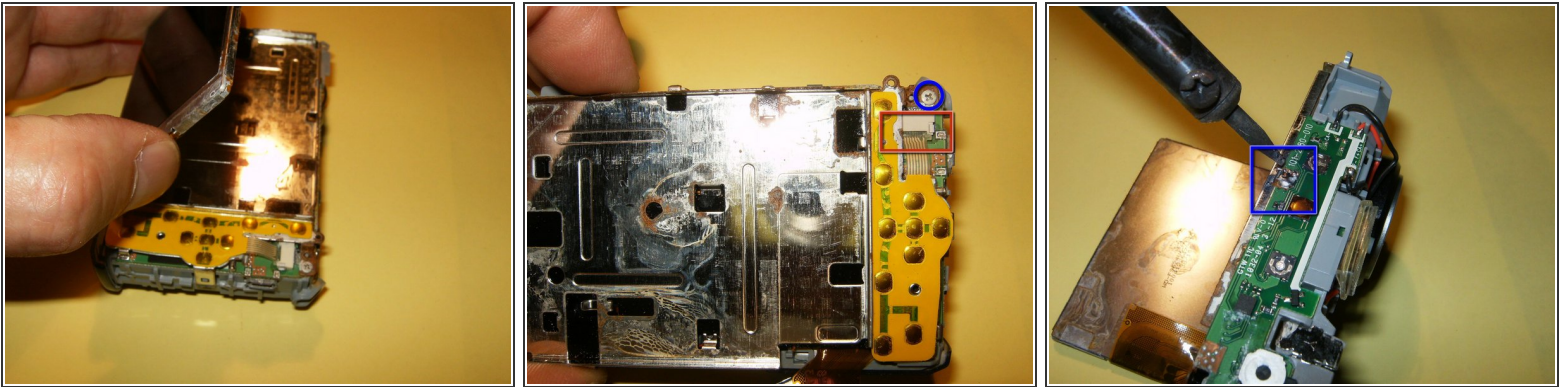
- Remove the two screws on the left hand side.
- Nicely enough, all the screws are the same size. No need to keep them separated.
- Start splitting the case from the battery holder. You can use an opening tool or just your fingernails.

Step 3



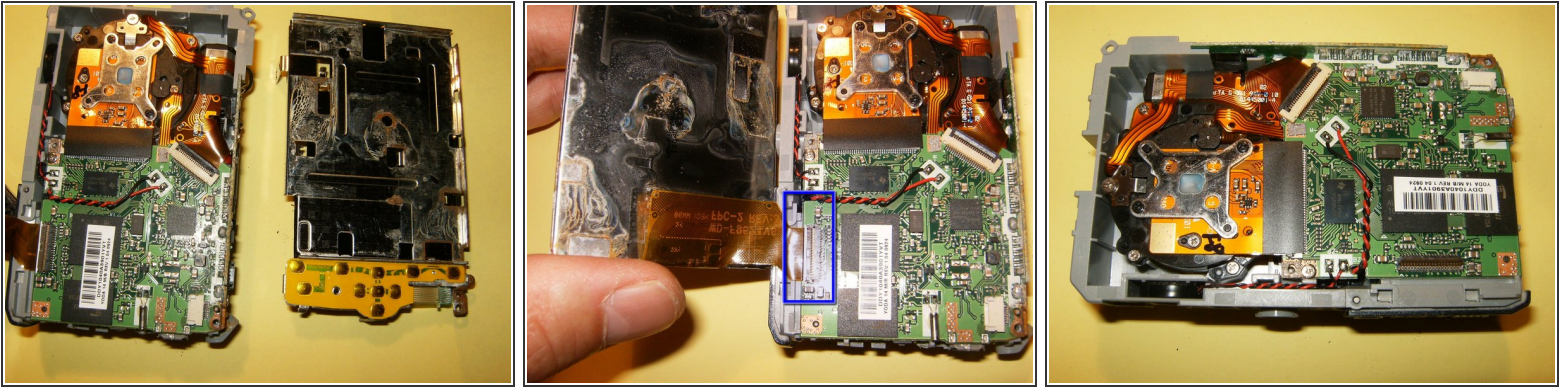
- The camera's front half will come off first.
- Remove the one screw on the top left of the camera. It this holds the back case on to the midframe.
- Remove the back case.

Step 4



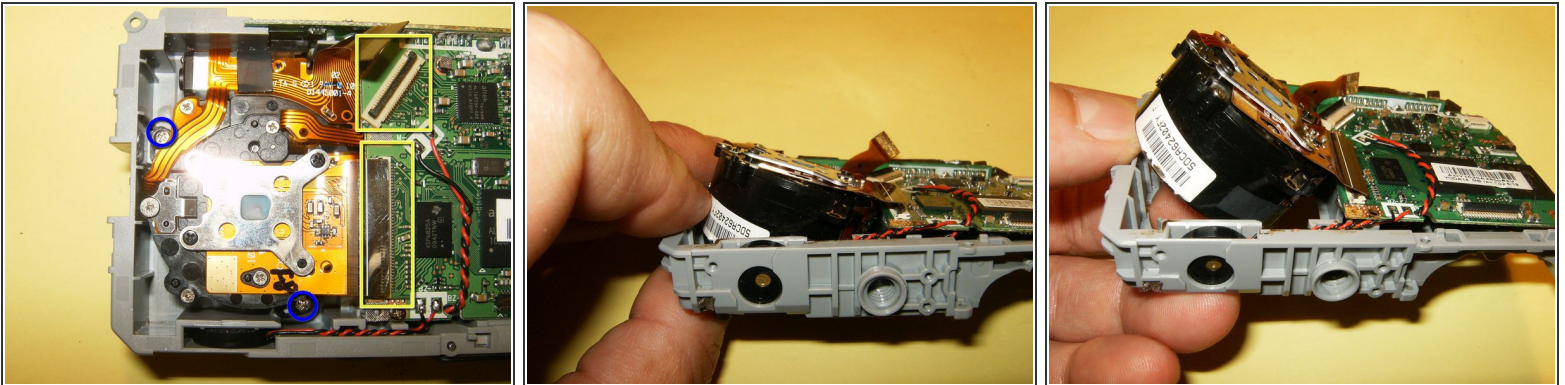
- Gently move the LCD out of the holder. DO NOT TRY TO REMOVE THE LCD. Just fold it over.
- Remove the one screw on the top corner of the holder.
- Remove the ribbon cable from its connector. It is just pushed in. there are not clips to move. Gently pull it straight down.
- Remove the solder that connects the LCD holder to the top logic board.

Step 5



- The LCD holding board and the switches are removed as one unit.
- Open the clip on the LCD ribbon cable connector. Use your fingernails to gently pull it toward the top of the camera.
- Remove the LCD.

Step 6



- Open the connectors for the CCD and the lens. Both use a clip that hold the cable in place. Move those gently into the opposite direction of the cables. This will free the cable.
- Remove the two screws that hold the lens in place.
- With the screws and the cables removed, use your fingers and push the lens upward and angled out of the midframe.

Step 7



- This is what your final result should look like. the lens is now free from the midframe and a new lens can be easily installed.

To reassemble your device, follow these instructions in reverse order.