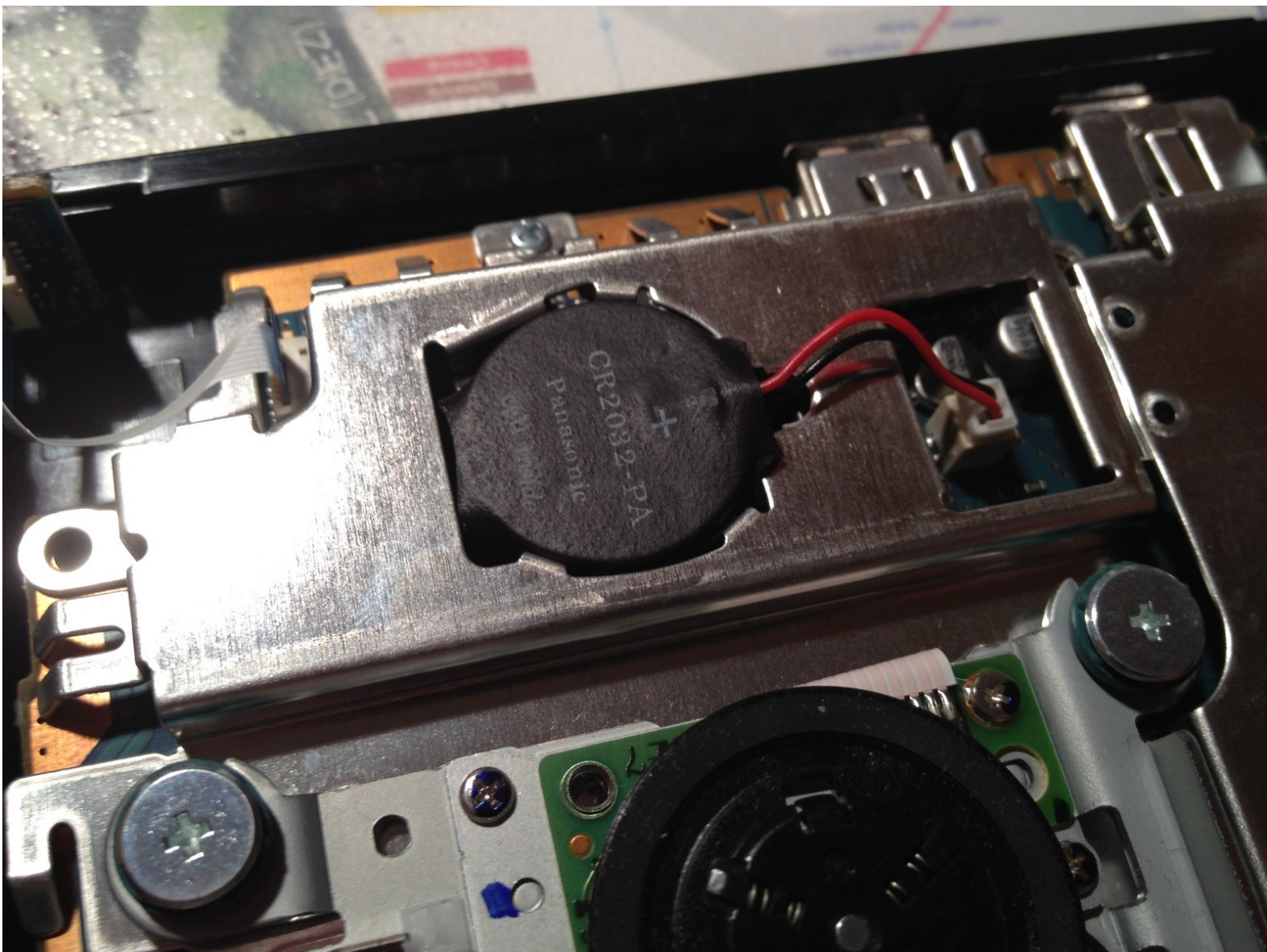




PlayStation 2 Slimline CMOS Battery Replacement

Written By: tloesner

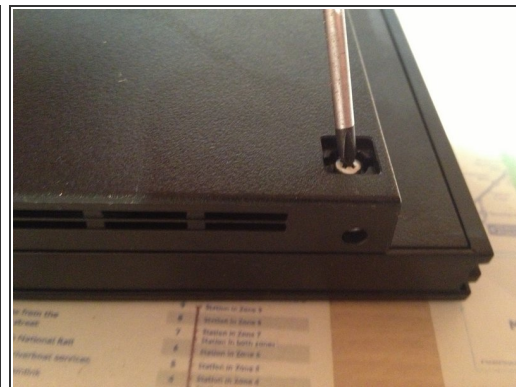
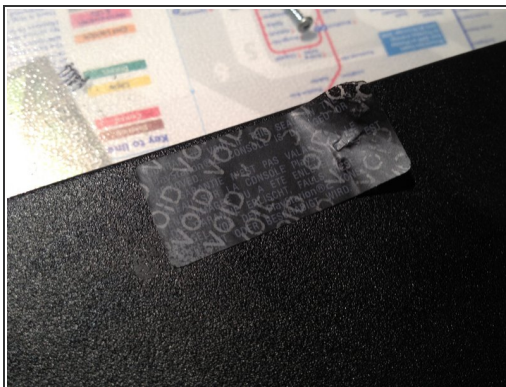




TOOLS:

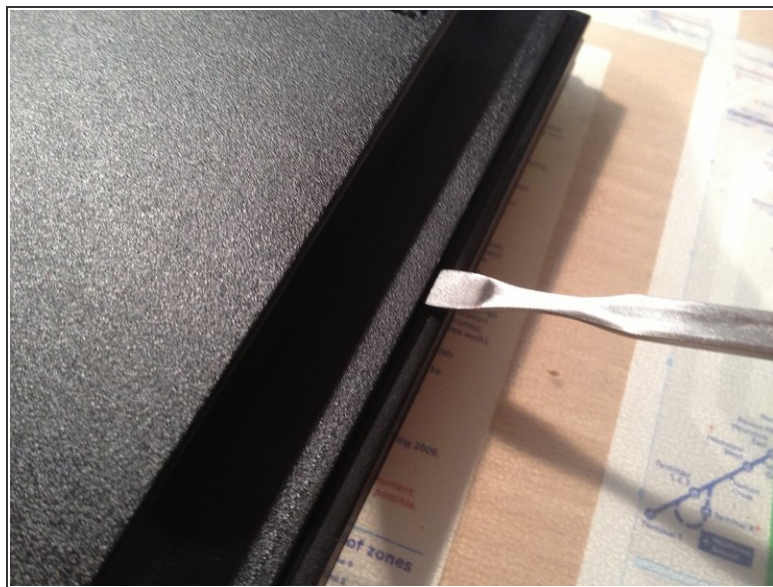
- [Metal Spudger](#) (1)
 - [Phillips #1 Screwdriver](#) (1)
-

Step 1 — CMOS Battery



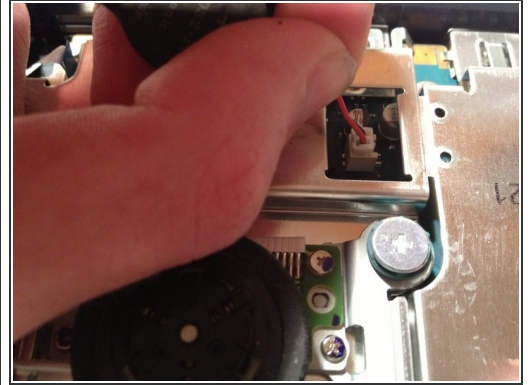
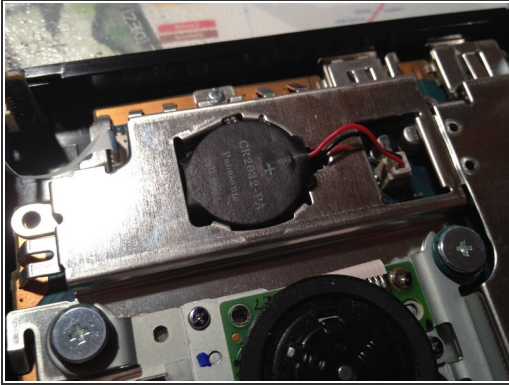
- Remove all five screws on the downside of the PS2 Slimline
- Remove the "Do not void" seal carefully, underneath is the fifth screw located.

Step 2



- Take a metal spudger and open the chassis

Step 3



- ① Locate the battery on the motherboard
 - Use a metal spudger to pull it up
 - Pull the cable and the battery is removed, ready to replace

To reassemble your device, follow these instructions in reverse order.