

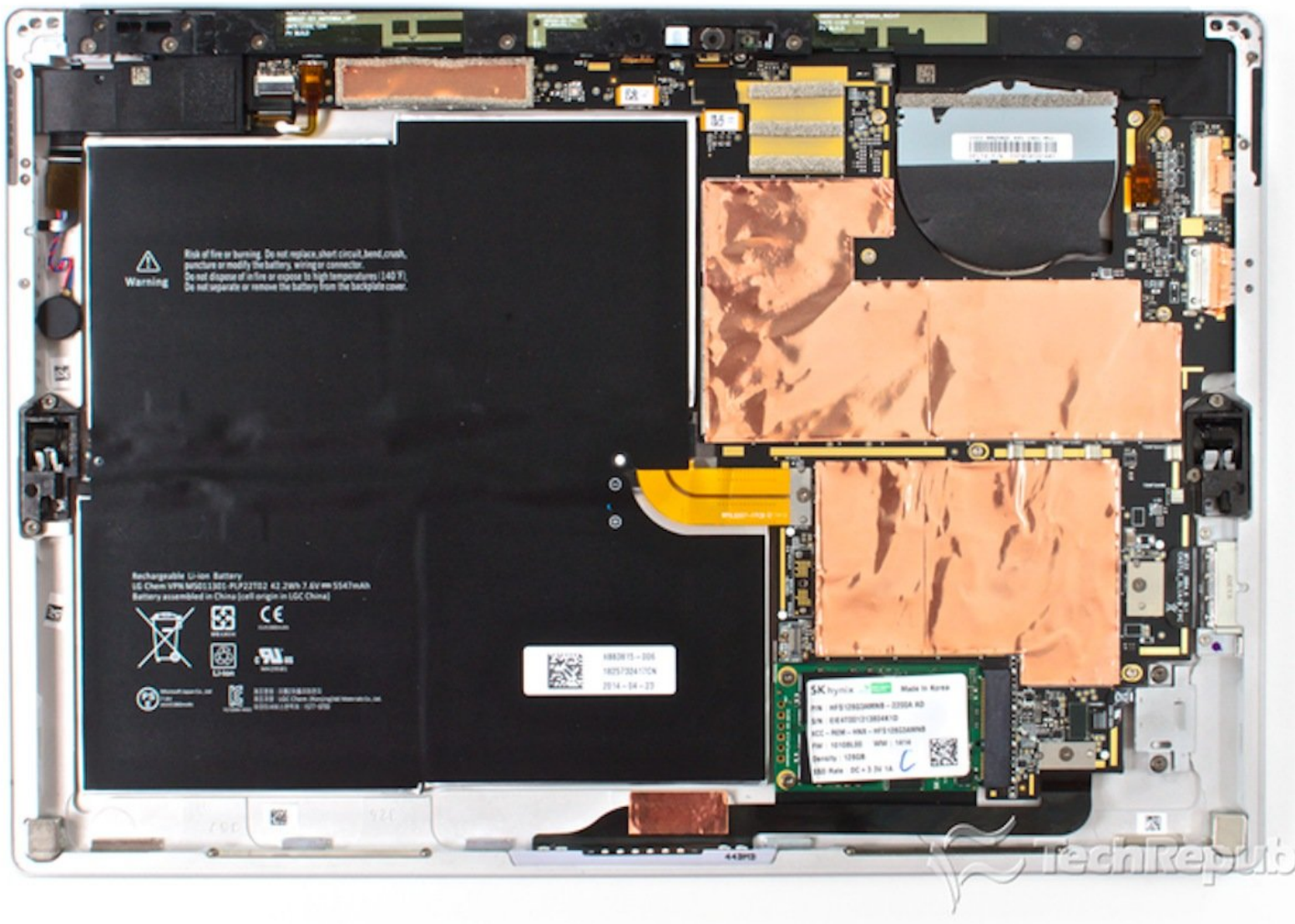


Microsoft Surface Pro 3 SSD Replacement

Dodgy Style

This guide shows a second way to open a Surface...

Written By: Hamish Davis



INTRODUCTION

This guide shows a second way to open a Surface Pro 3 and replace the drive without paying the money Microsoft wants and without risking destroying the display. This is not the original guide, but it's slightly better and safer than [this](#) guide.



TOOLS:

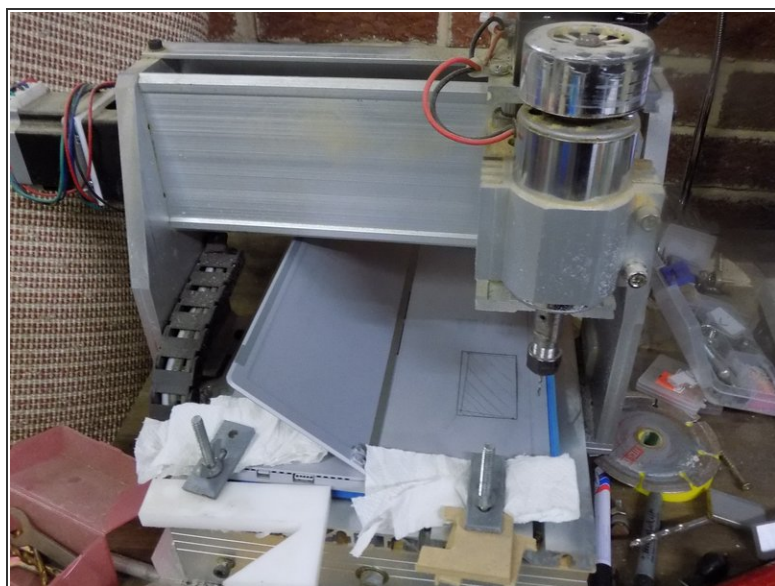
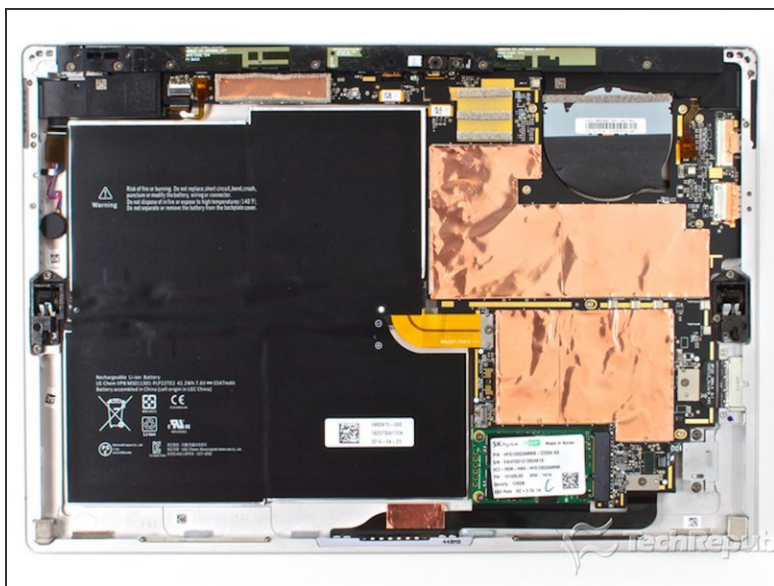
- [CNC machine](#) (1)



PARTS:

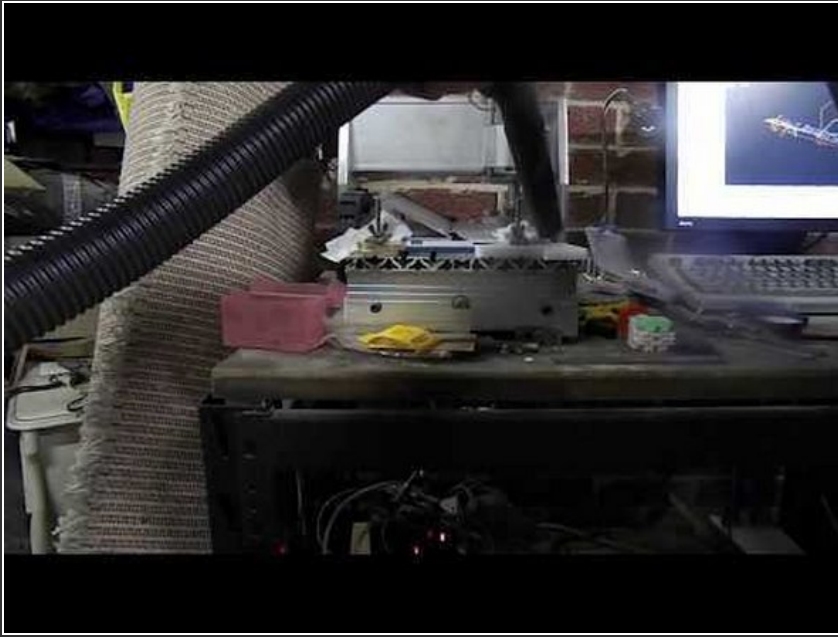
- [mSATA SSD](#) (1)

Step 1 — Mark it



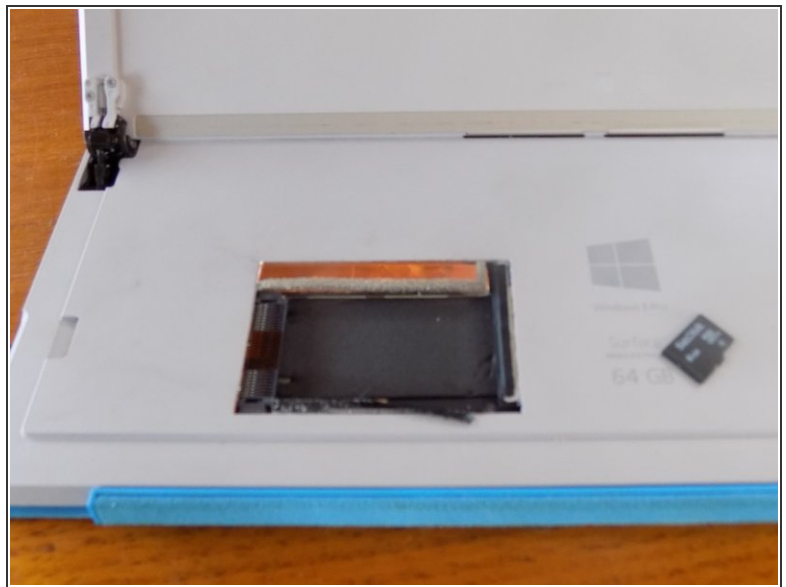
- Print this off to scale it up to the right size of the surface and mark it up with a pencil.
 - When it is marked up it should look something like the second photo.
- ☑ You need to reverse this image. This is shown with the screen off.

Step 2 — Mill it



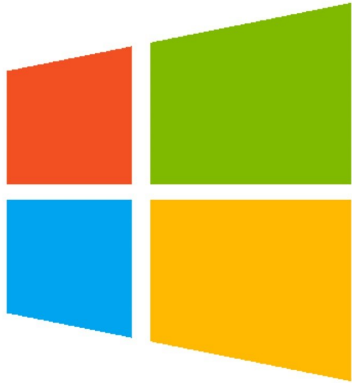
- You want to use a V bit on a CNC machine to cut it nicer and give it a chambered edge.
- ❗ I used my CNC machine with no WD40 or water to cool it and it cut very nicely. Remember to vacuum the chunks as they come off because they can get caught and puncture the battery.
- It's also a good idea to put some paper towel in between the clamps and the Surface. Also be sure to have the type cover on so you don't damage the screen.

Step 3 — Unscrew it



- The drive should just lift out, I used a Micro SD card to cover my serial number.

Step 4 — Install it



- Now this is where it gets interesting. you can either try to make the recovery USB from [This](#) or you can book an appointment with someone at the Microsoft store and they can make it work and install all new drivers. The only thing they won't do now once you cut it open is replace it
- Either that or you can install linux on it from www.reddit.com/r/surfacelinux

There is no going back but with some files and a drill bit you can make a sweet keychain fob that you can engrave with the CNC machine