



Ring Doorbell Battery Replacement

This guide is to show how to open the Ring...

Written By: Greg Beeblebrox



INTRODUCTION

This guide is to show how to open the Ring Doorbell to replace the battery. This is only for the 1st gen ring doorbells as newer versions do not have a battery and require full time power.



TOOLS:

- [iFixit Opening Tool](#) (1)
- [Phillips #00 Screwdriver](#) (1)
- [2.5 mm Flathead Screwdriver](#) (1)
- [1 x Opening Picks](#) (1)



PARTS:

- [Ring Doorbell Battery](#) (1)

Step 1 — Face plate removal



- Start by removing the 4 screws to take off the aluminum face-plate.

Step 2



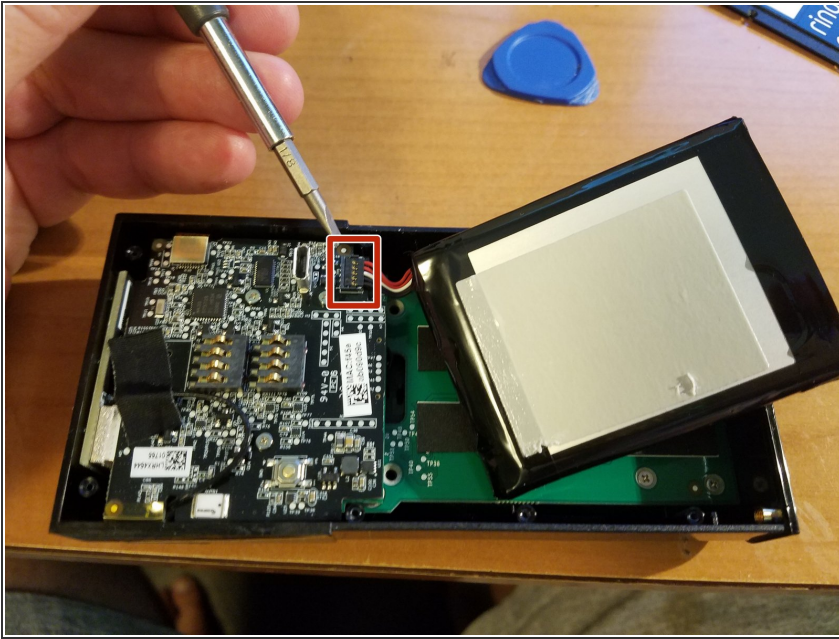
- Pry the aluminum face-plate carefully using a plastic spudger while applying gentle pressure. This will reveal the 4 black screws underneath.
- ⓘ You will need a micro phillips screwdriver to remove these tiny screws. You will find that it requires considerable torque to loosen them, so to avoid stripping the head, really push in with the screwdriver while applying torque.

Step 3



- Carefully pry the plastic cover with a pick to pop the insert out. Watch the micro USB port that is sticking out.

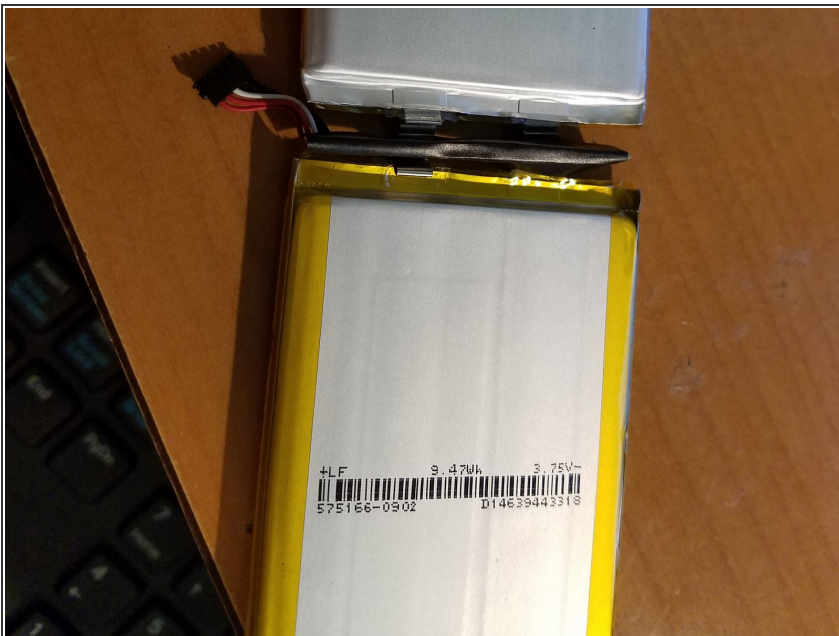
Step 4



- Gently pry up the battery from underneath the connector. But remember the orientation, red wires to the outside exposed wire on the connector facing upward.

⚠ The battery **MAY** still be attached to the plate. Buy some double sided tape, because disposal of the old battery will likely include the existing tape.

Step 5



- Two Lithium polymer batteries are connected back to back and in parallel to the regulator. The

batteries are rated at 9.47w @ 3.75v each.

- When you are satisfied that the battery is properly installed, the new battery should have enough charge that you will see at least one of several LED's light up. You can then close up. But if not, charge the unit via USB to see if the LED's are functioning. If not, check the battery connection.

To reassemble your device, follow these instructions in reverse order.