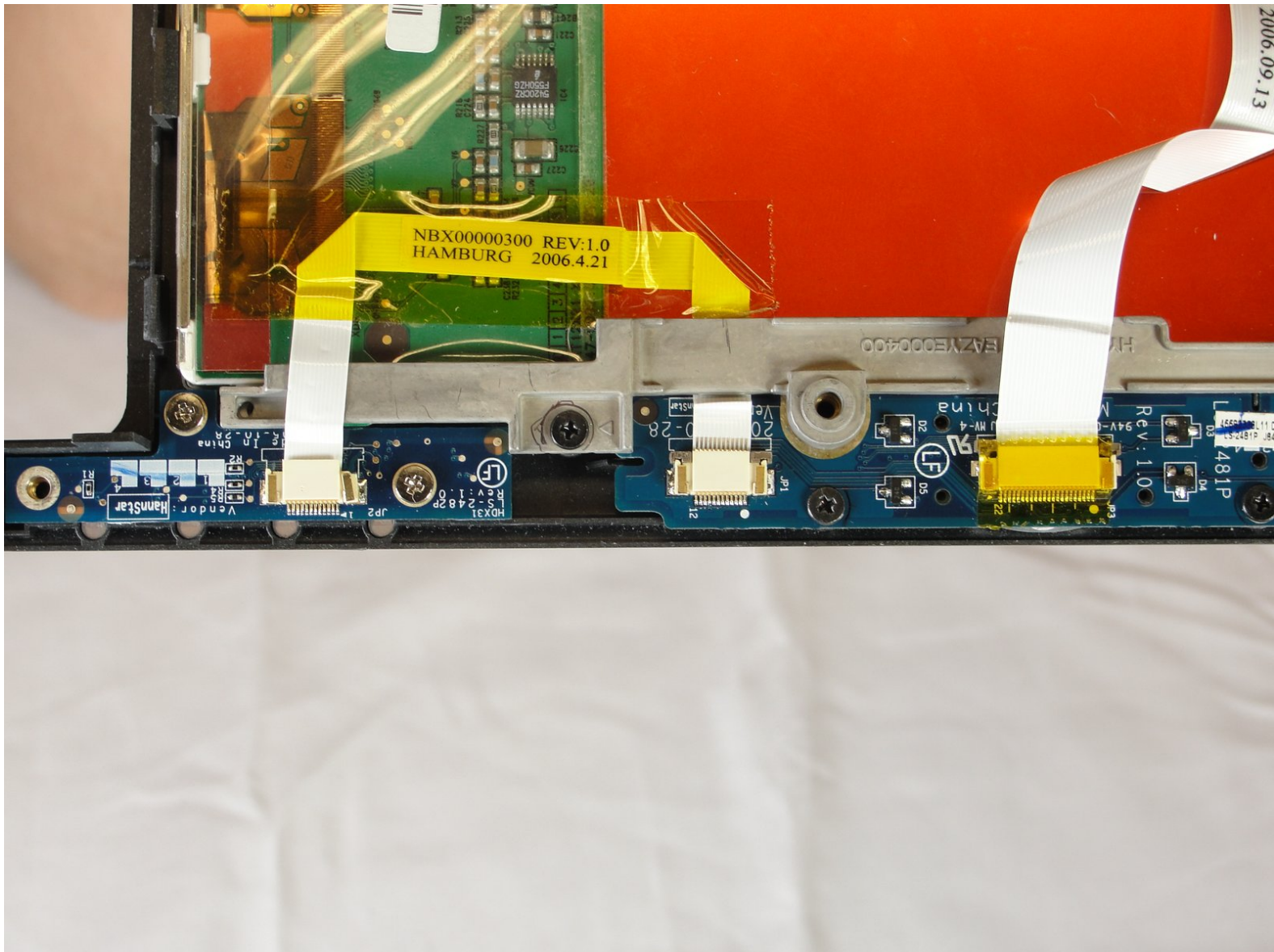




Motion Computing LE1600 Display Screen Replacement

The purpose of this guide is to show how to remove the display screen from the LE1600.

Written By: Jesse Graham



INTRODUCTION

If your screen cracks or one of the pixels no longer functions correctly, you may need to replace the display screen. This guide will take you through the process of removing and replacing the display screen of the LE1600.



TOOLS:

- [Phillips #1 Screwdriver](#) (1)
 - [Spudger](#) (1)
-

Step 1 — Battery



- Turn the device so the screen is facing down.

Step 2



- Slide the battery lock switch next to the power slider to the unlocked position.

Step 3



- Slide and hold the switch by the fan vent to the unlocked position. Firmly grasp the battery and pull away from tablet.
- ☑ When replacing the battery, place the end near the fan vent in first. Make sure to keep the other switch in the unlocked position while pushing the battery into place.

Step 4 — Display Screen



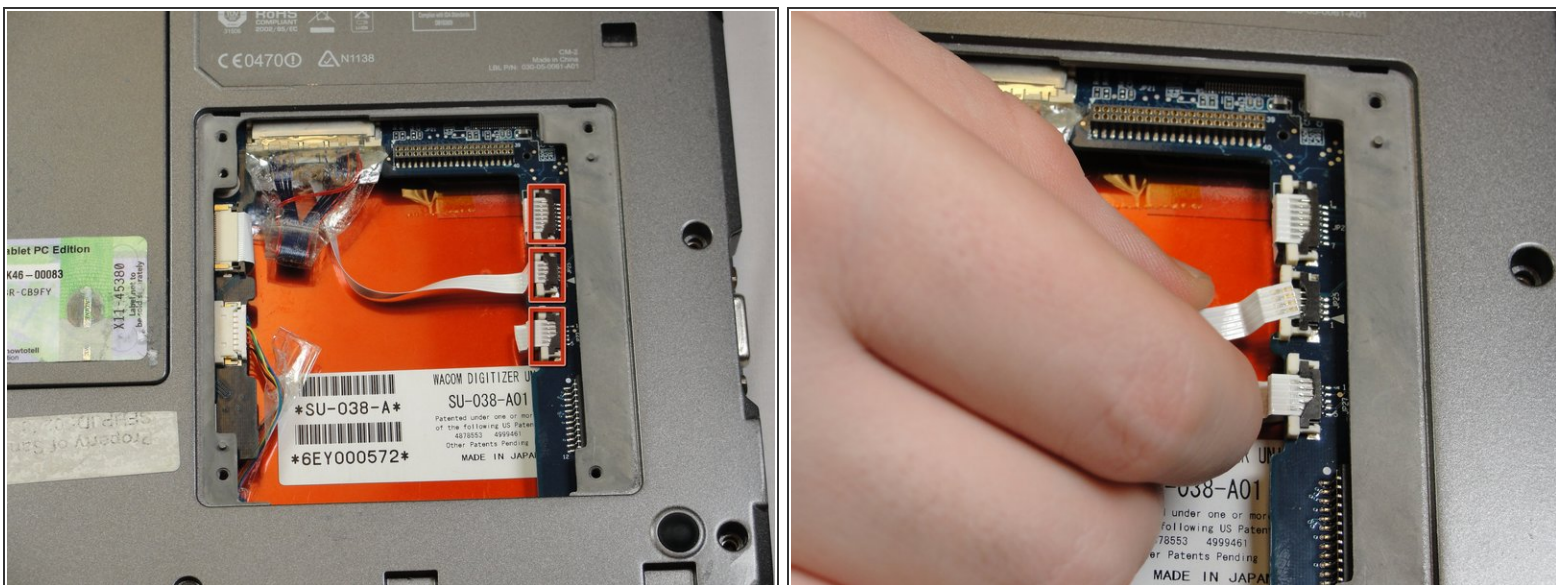
- Unscrew hard drive panel using a Phillips head #1 screwdriver.
- (Our device was not given to us with a hard drive or a hard drive panel)

Step 5



- Pull clear plastic tab to detach hard drive from tablet.

Step 6



- To disconnect the three white ribbon cables on the side closest to the hard drive connector, pull the white plastic tabs.


Step 7



- Pull the brown tabs to disconnect the white ribbon cable on the other side.

Step 8



 **Caution:** do not pull on the wires, instead pull from the plastic connectors.

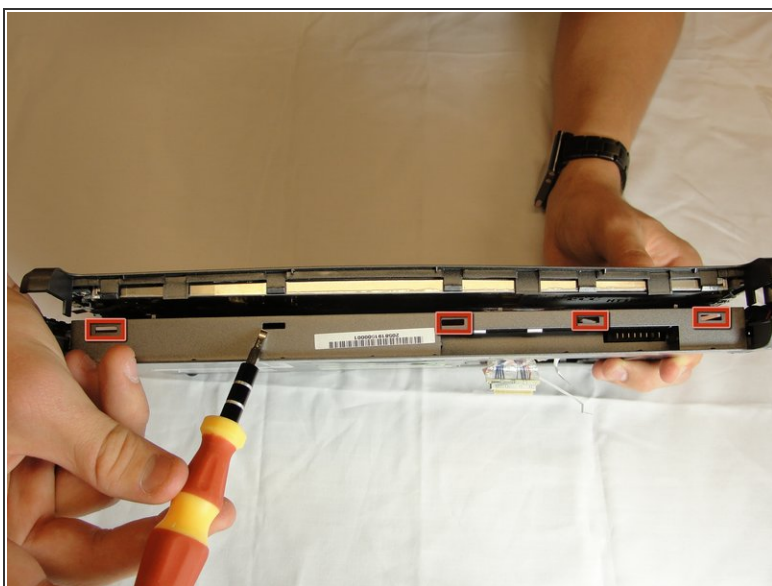
- To disconnect the remaining ribbon cables, pull the plastic connectors away from their connections.

Step 9



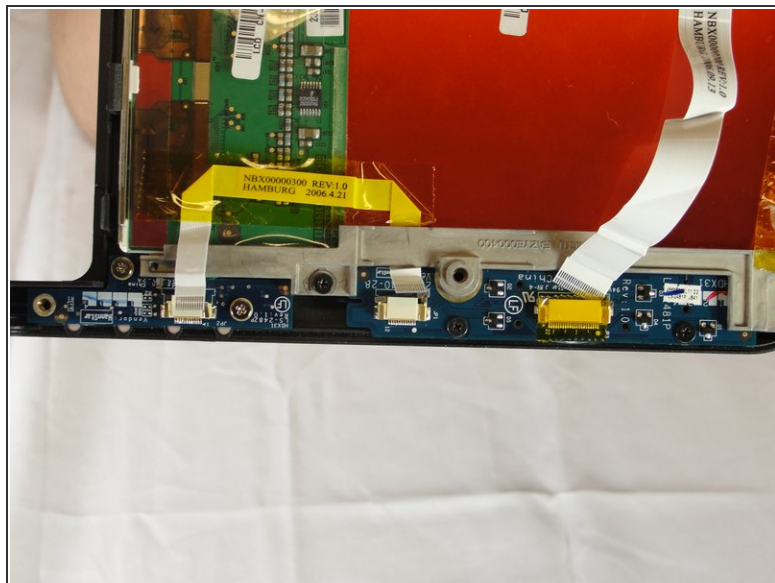
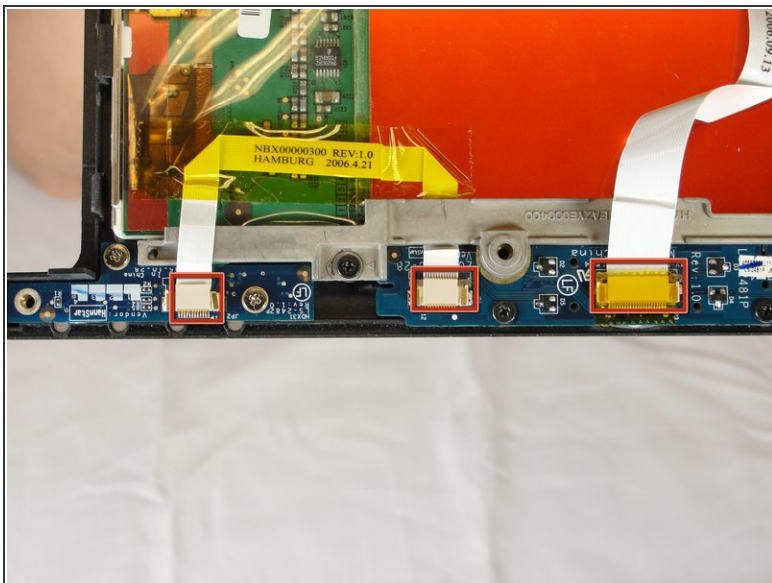
- With a Phillips #1 screwdriver, Unscrew the nine 10mm screws holding the case together.

Step 10



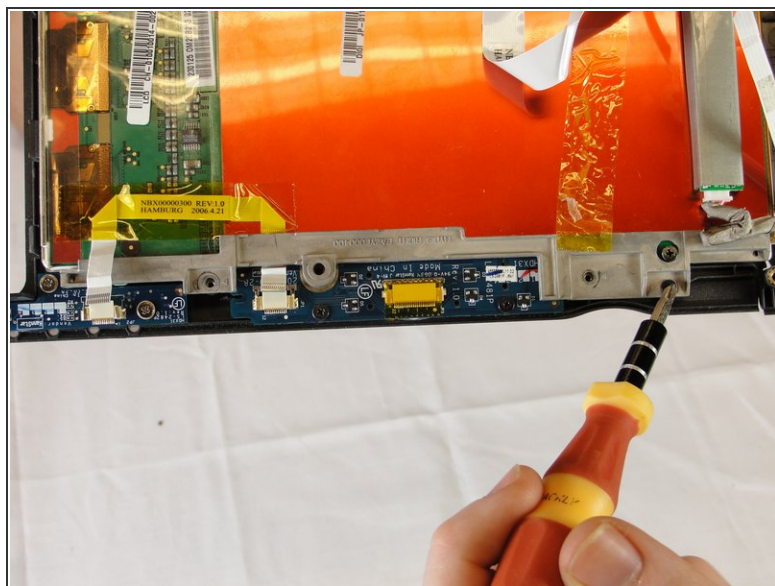
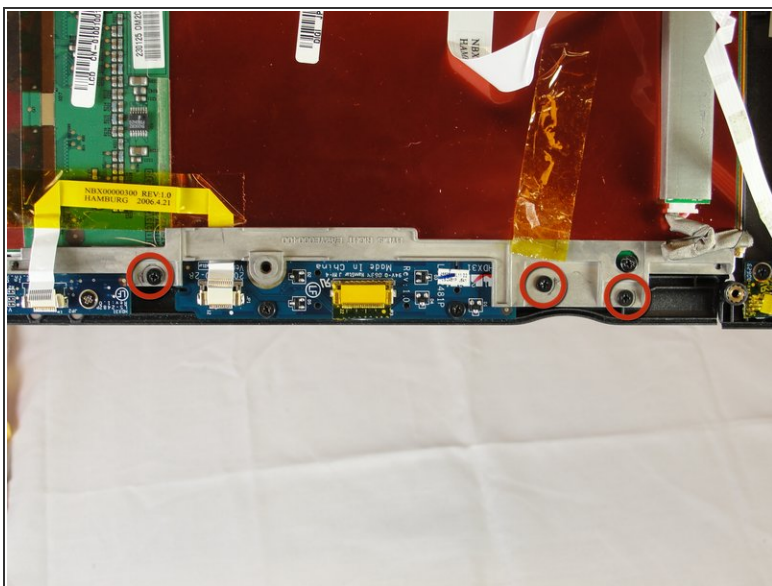
- Using a spudger, press in the five tabs on the side where the battery was.
- This should separate the two halves of the device. Carefully set the side with the motherboard off to the side.

Step 11



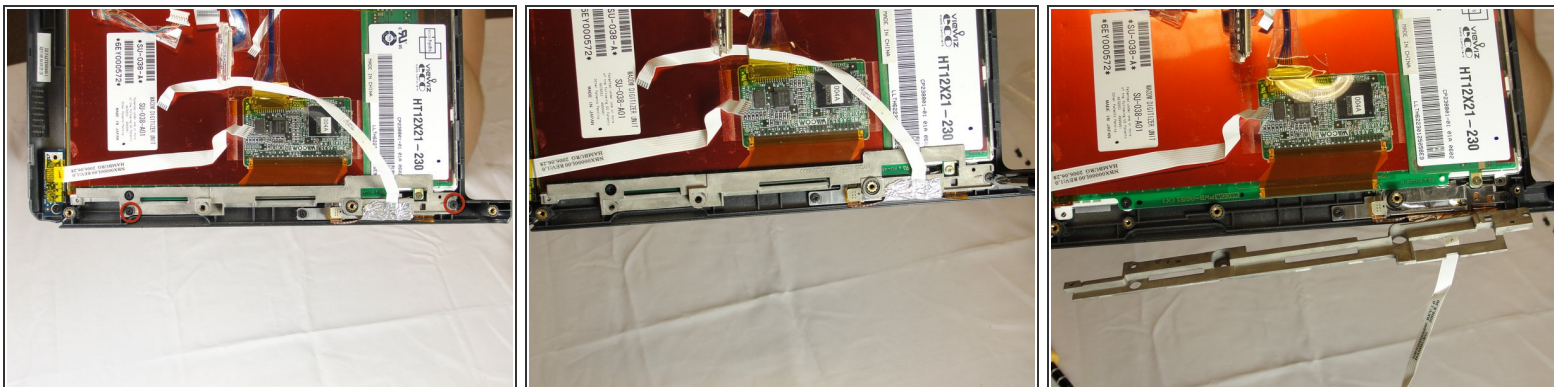
- Unplug the three ribbon cables by pulling on the brown tabs and unplugging cable.

Step 12



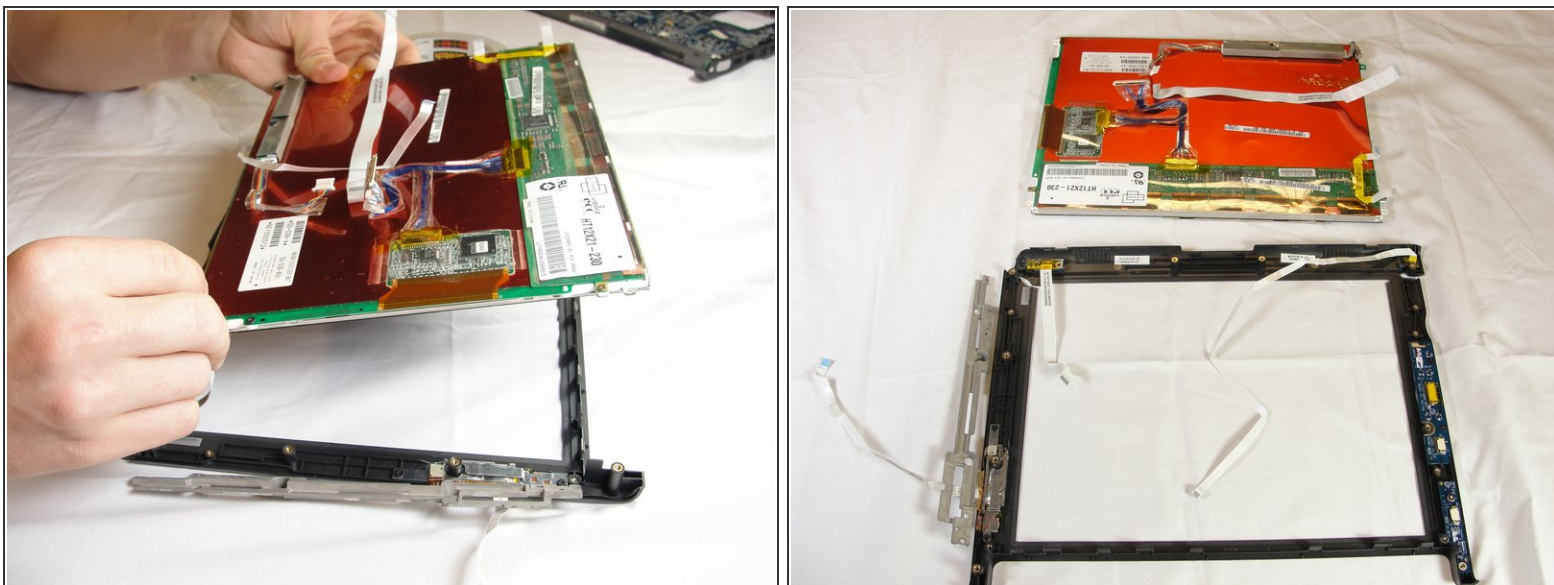
- With a Phillips #1 screwdriver, unscrew the three 4mm screws holding the display bracket on the back side of the front buttons.

Step 13



- On the bracket behind the fingerprint scanner, unscrew the two 4mm screws holding it to the display with a Phillips #1 screwdriver.
- Fold away right bracket from display.

Step 14



- Pull the plastic case away from the display screen.

To reassemble your device, follow these instructions in reverse order.