



# Sony Cyber-shot DSC-WX350 Lens Assembly Replacement

This will help you replace or clean the lens assembly.

Written By: Joshua R Hammel



# INTRODUCTION

This guide will teach you how to replace or clean a lens assembly in a Sony Cyber Shot DSC-WX350



## TOOLS:

- [Phillips #00 Screwdriver](#) (1)
  - [iFixit Opening Tools](#) (1)
-

## Step 1 — Lens Assembly



- Use the J00 screwdriver to take out the four 3mm black screws on the bottom and both sides of the camera.

## Step 2



- On the bottom of the camera slide the button over to open the battery case. Inside the battery opening use the J00 screwdriver to take out the single 3mm black screw.

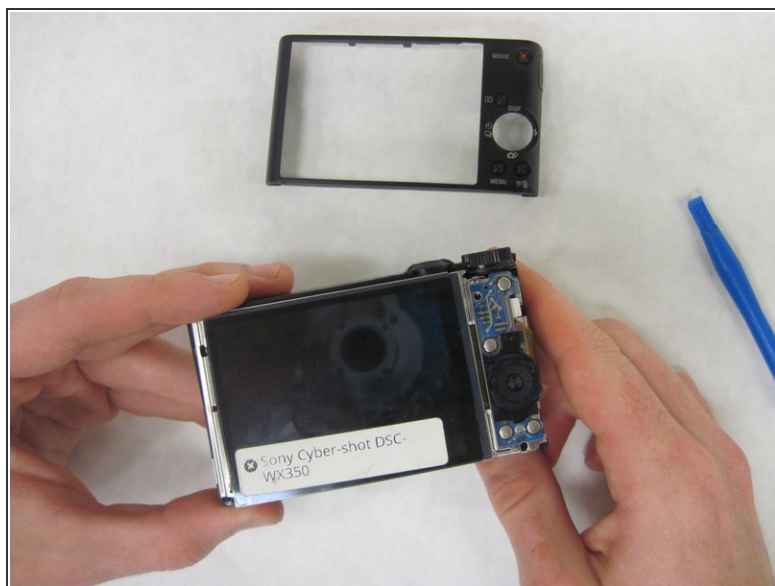
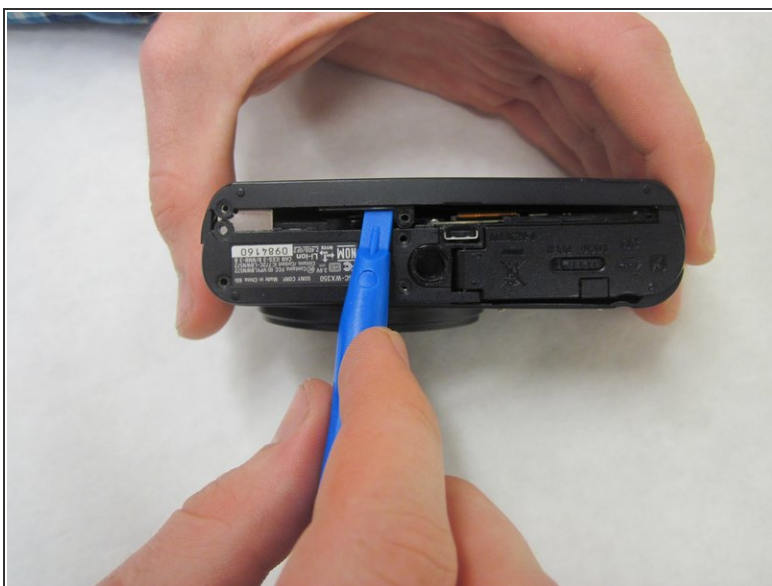


### Step 3



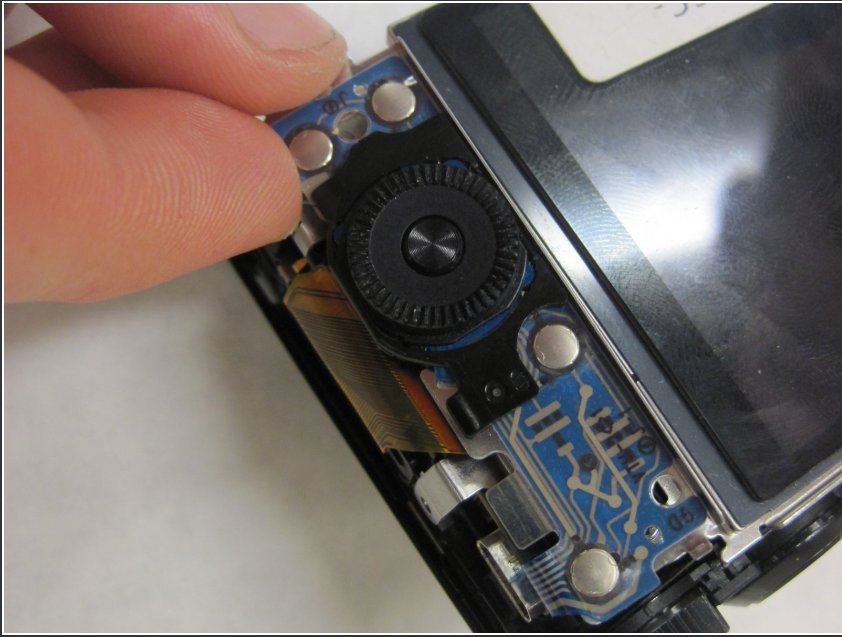
- Use the J00 screwdriver to take out the single 3mm black screw on the left side of the camera .

### Step 4



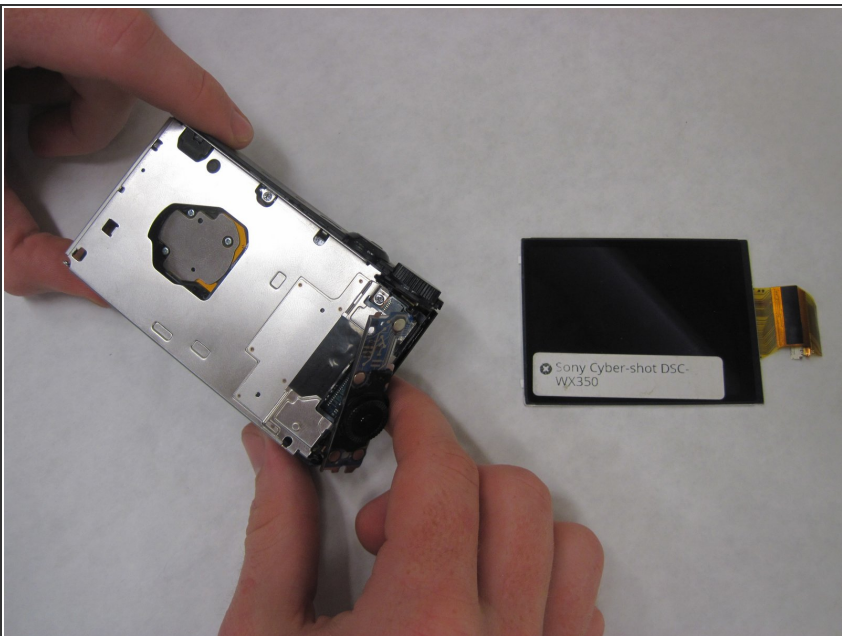
- Use the plastic opening tool to pry open the back cover off.

## Step 5



- Use your fingers to slide out the controller wheel board's lower end, then unhook the other end.

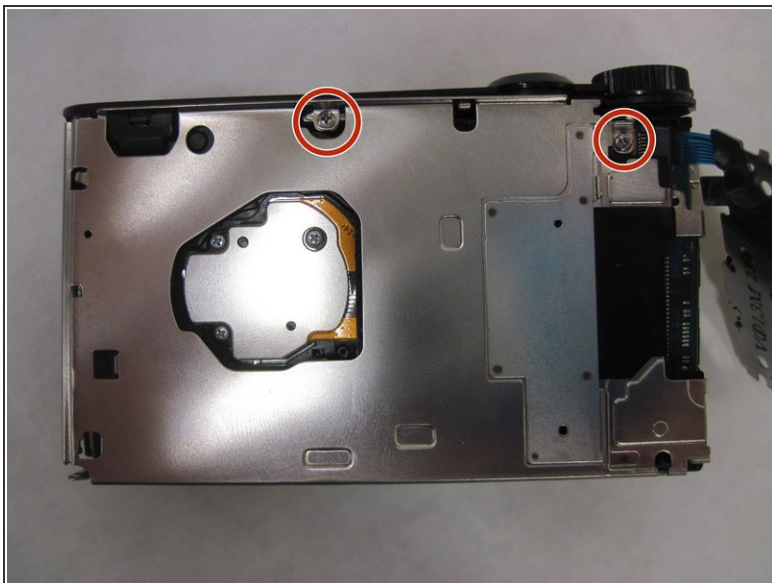
## Step 6



- Take the LCD off by undoing the zif and sliding it out.

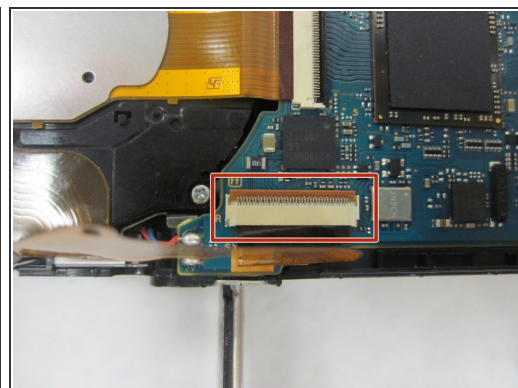
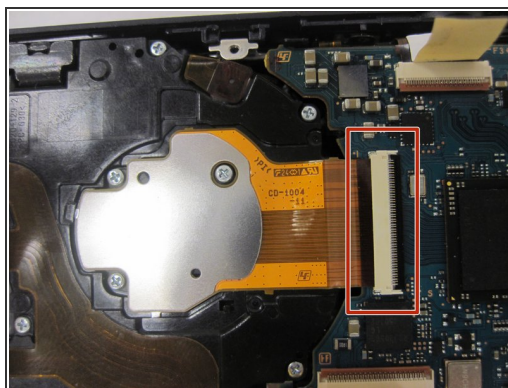
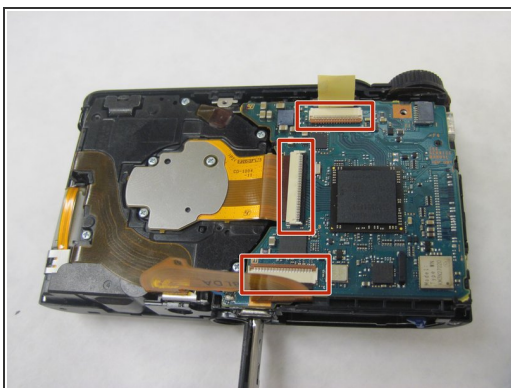


## Step 7



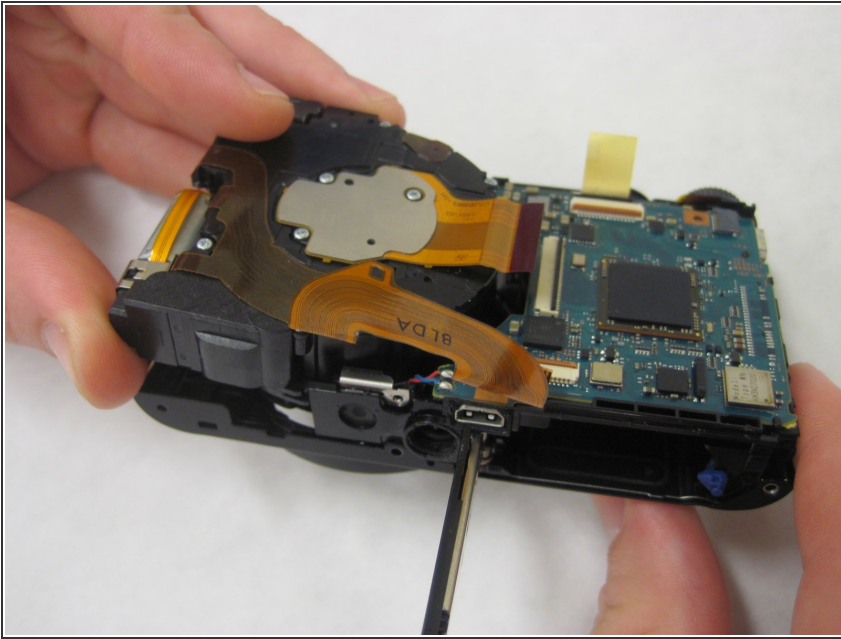
- Once the LCD is off use the J00 screwdriver to take out the two 3mm silver screws. Once the screws are taken out pull off the piece with your fingers.

## Step 8



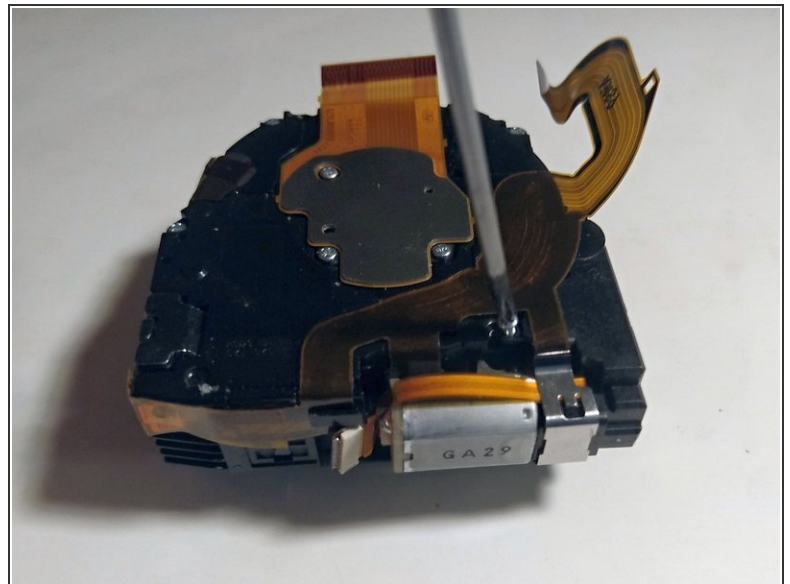
- Now take out the 3 zifs by first opening the zif latch with your fingers and then sliding it out.

## Step 9



- Carefully remove the lens assembly from the camera.

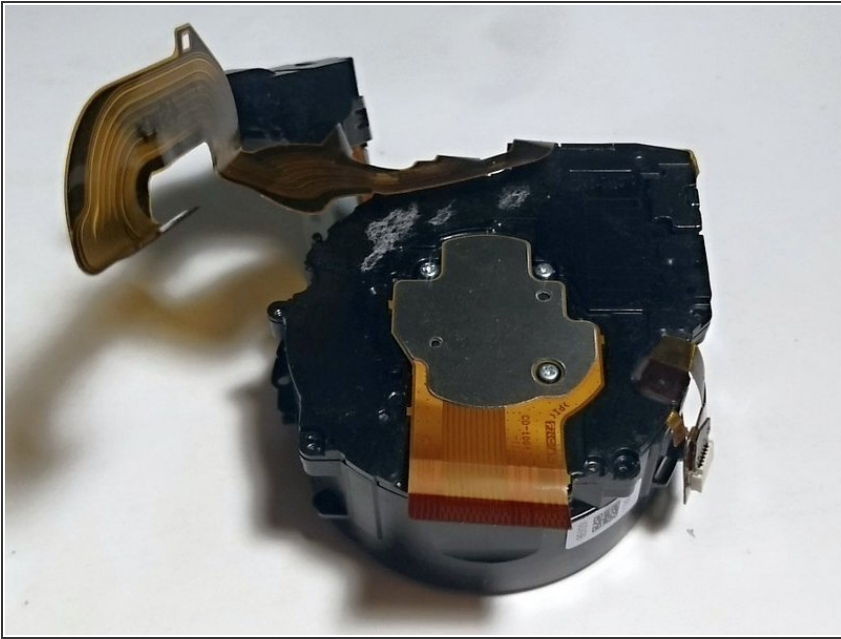
## Step 10



- In order to access the CCD, loosen the 3 screws holding its metal lid.
- In order to access the lens mechanics, take out the 4 3mm screws on the edge of the lid, then the single 3 mm screw next to the motor.

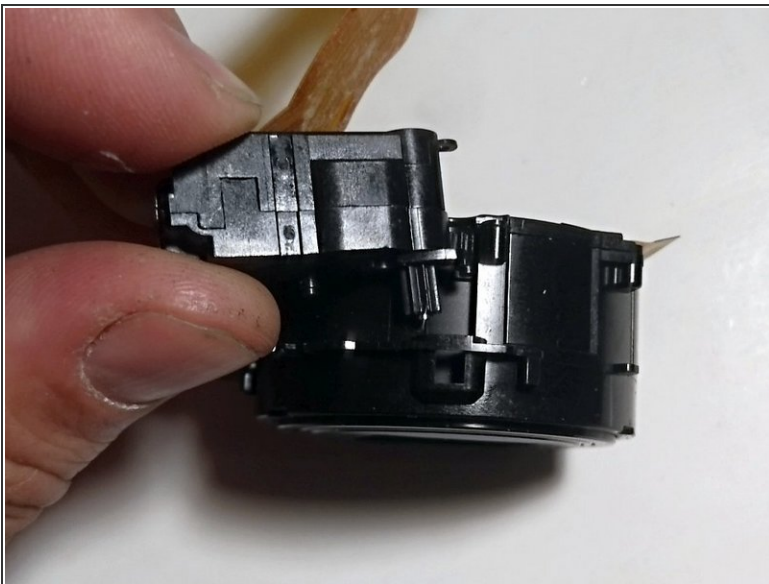


## Step 11



- Carefully tear off the ribbon glued to the plastic.

## Step 12



- Pull out the cogwheel with the drive unit.
- Now you can access the lens inner mechanics. You might wanna cover the CCD and the inner lens opening with tape to prevent dust from entering before you try to clean anything.



To reassemble your device, follow these instructions in reverse order.