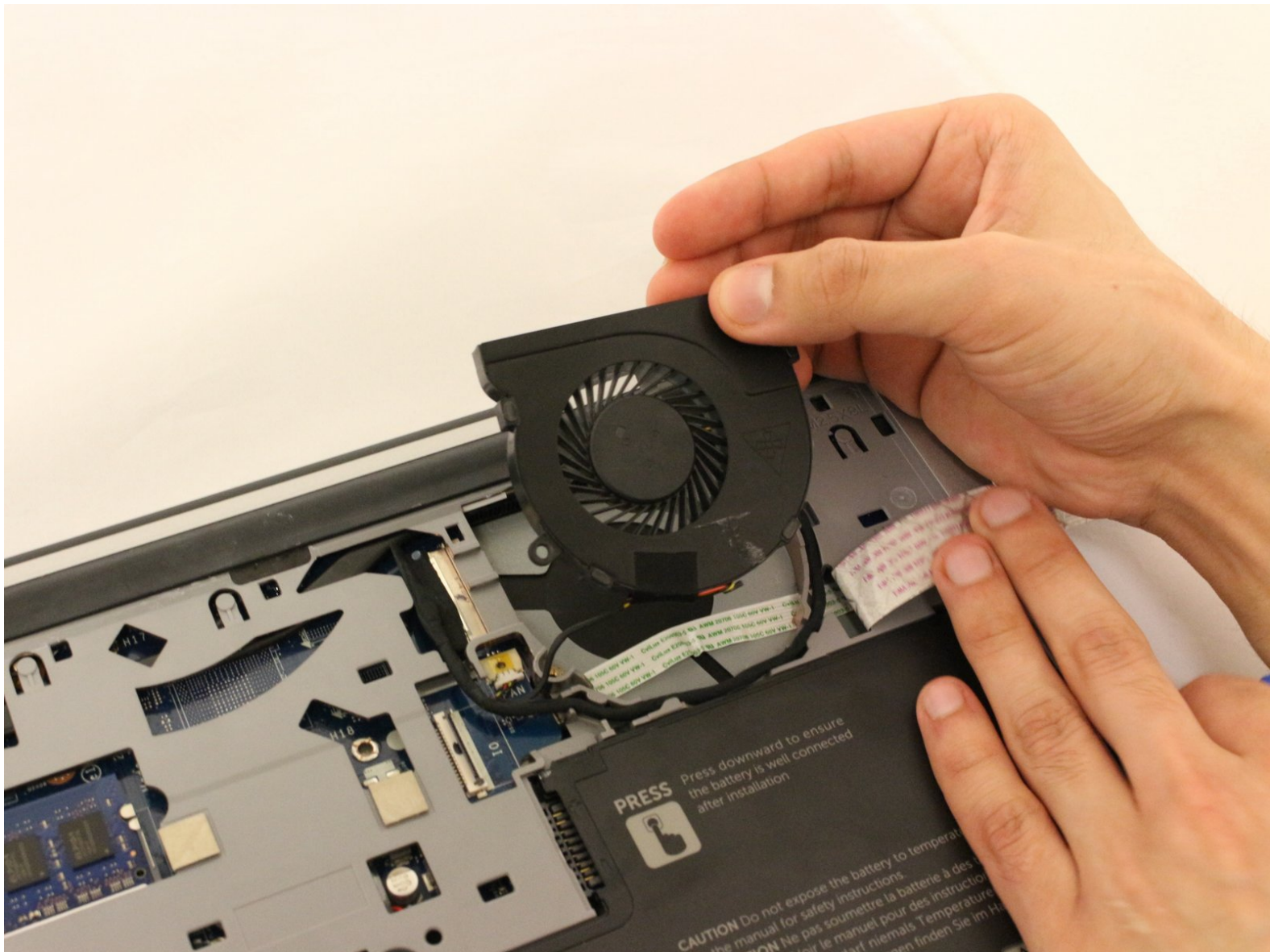




Dell Inspiron 14-5447 Fan Replacement

Replacing a faulty fan for the Dell Inspiron 14-5447.

Written By: Isabella Chavez



INTRODUCTION

This guide will teach users how to replace a faulty fan for the Dell Inspiron 14-5447. With removal of the fan, cleaning any debris left behind will help your new fan run much quieter and have better cooling circulation.

Prior to beginning this repair, be sure to power off the laptop and unplug it from the power cord.



TOOLS:

- [Phillips #0 Screwdriver](#) (1)
- [iFixit Opening Tool](#) (1)
- [Spudger](#) (1)
- [Tweezers](#) (1)



PARTS:

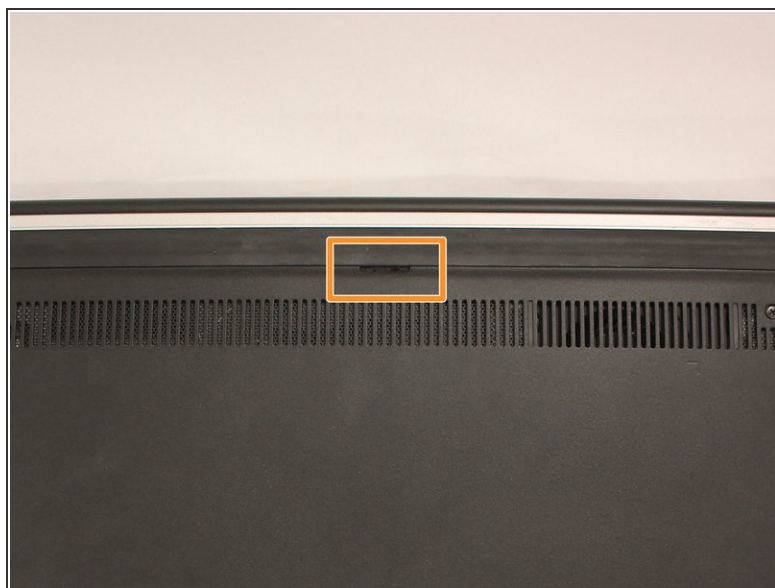
- [Dell Inspiron 15 \(5547\) CPU Cooling Fan](#) (1)

Step 1 — Battery



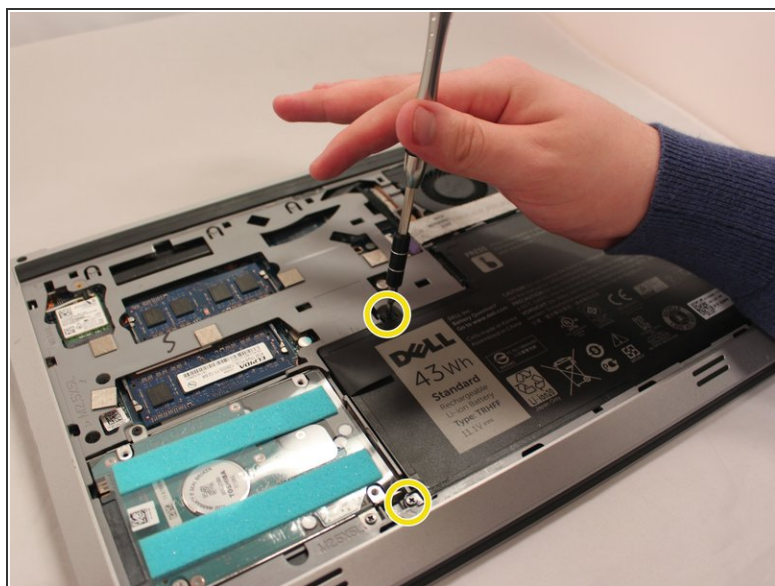
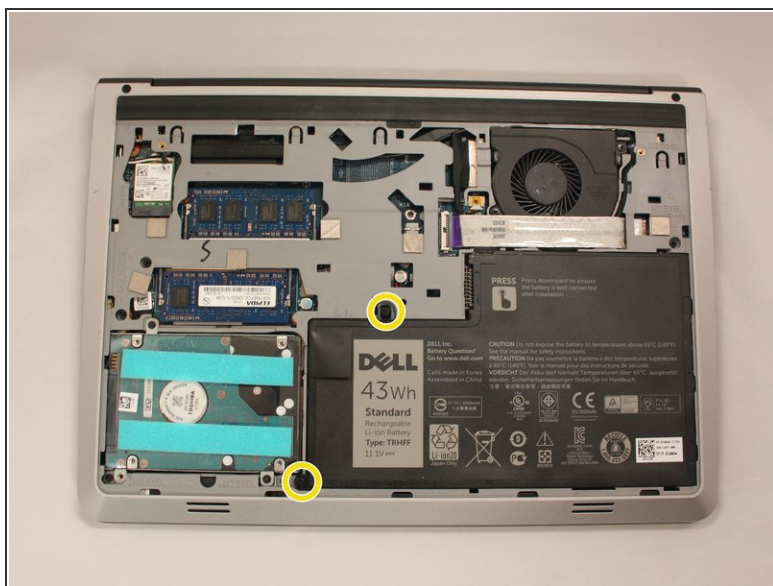
- Flip the laptop upside down to access the battery.

Step 2



- Remove the two black 5.70mm Phillips#0 screws on the case's back.
- Insert a plastic opening tool into the small slit, centered between the removed screws, and pry open the back cover

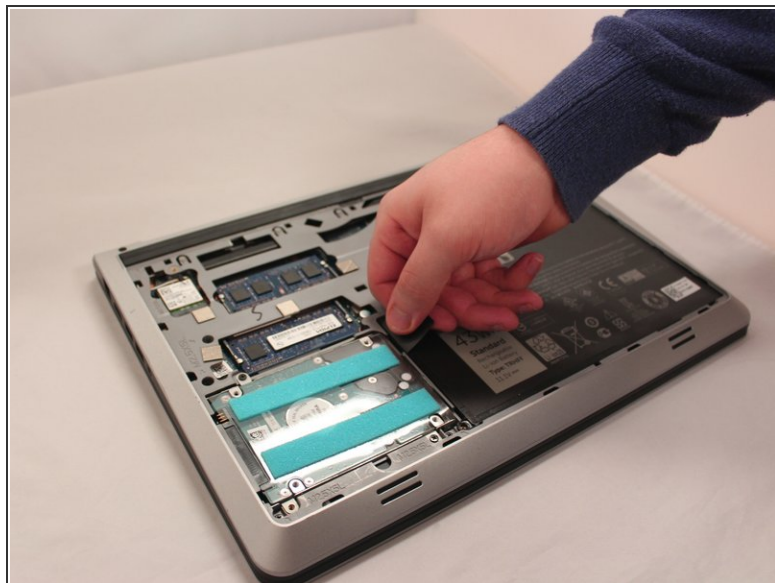
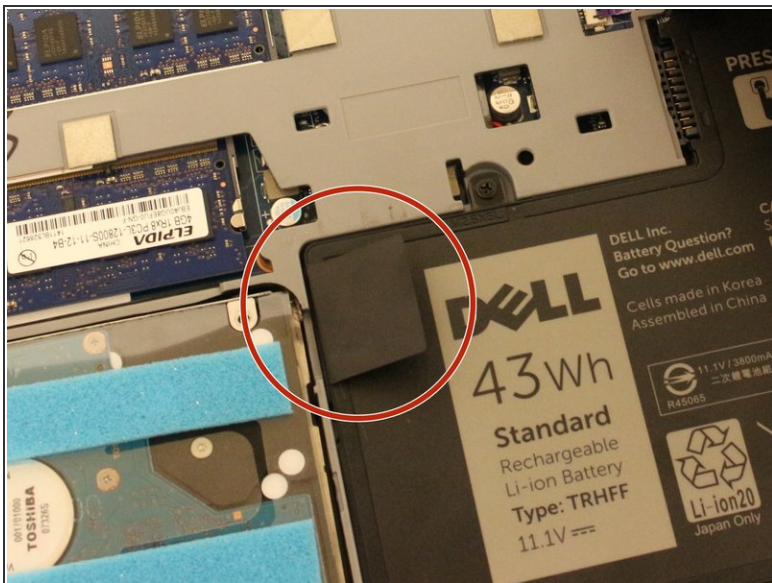
Step 3



- Remove the two 5.70mm Phillips #0 screws that secure the battery in place on its left side .

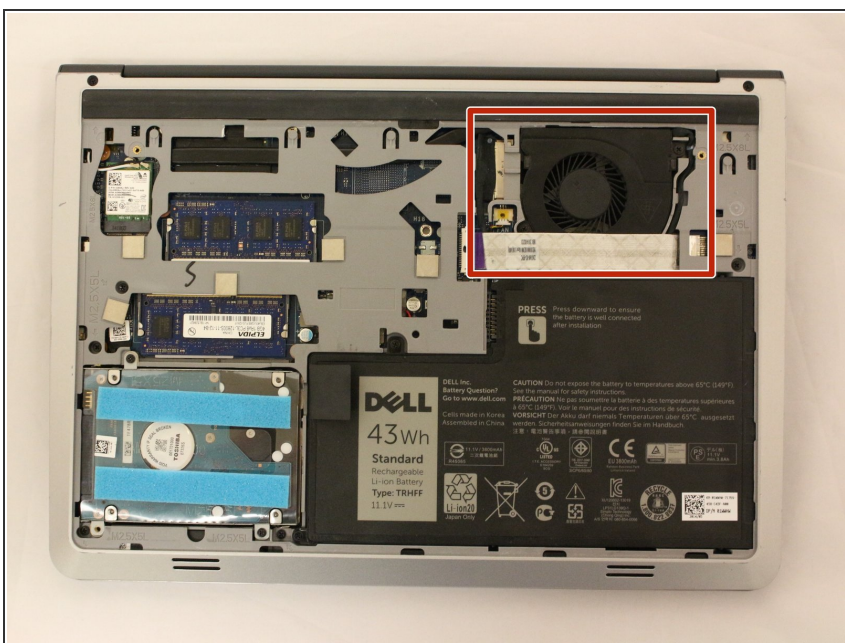
⚠ Treat the battery with care - puncturing or bending may cause damage to the battery and may result in fire or injury.

Step 4



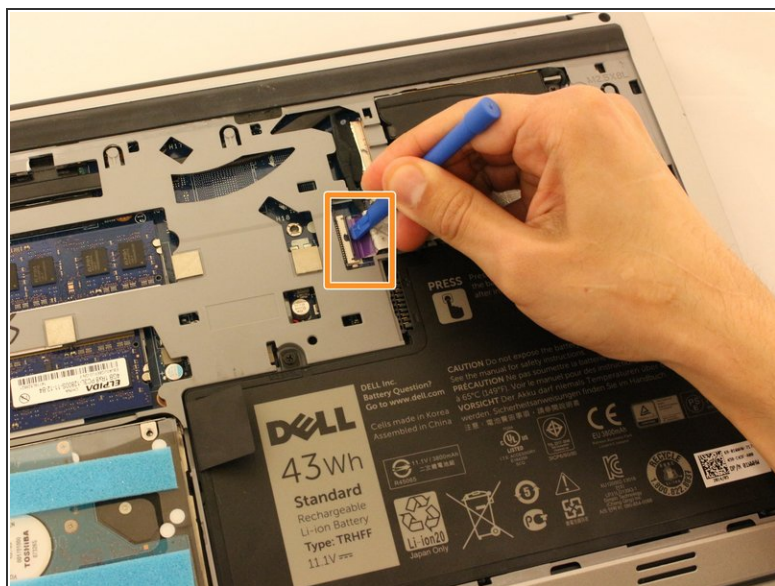
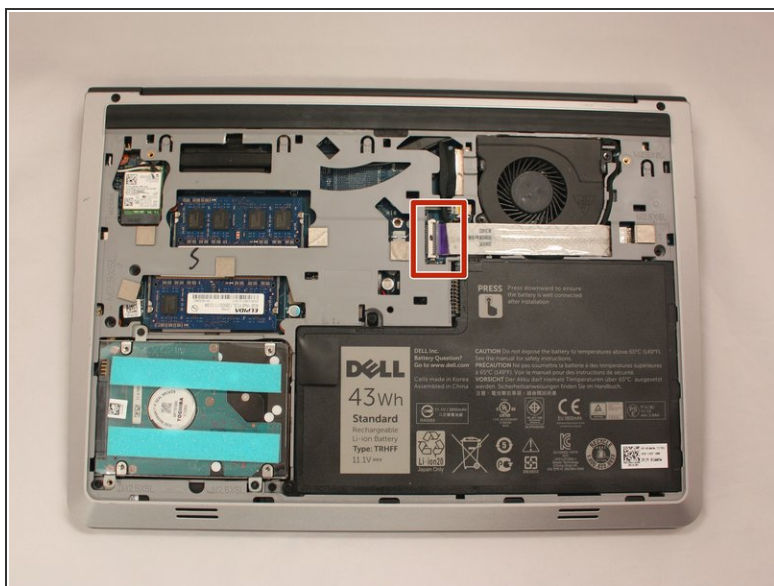
- Use the black, plastic flap on the left side to pull the battery out.
- Slowly lift the flap up and the battery should slide out.

Step 5 — Fan



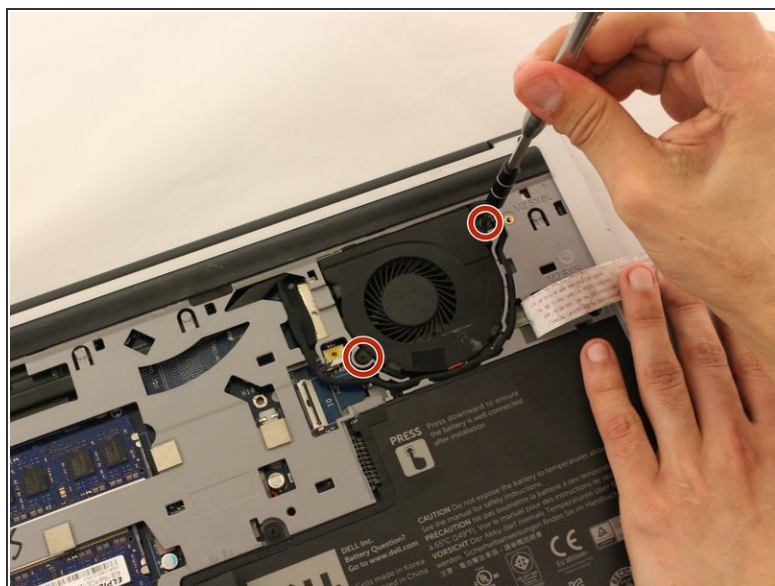
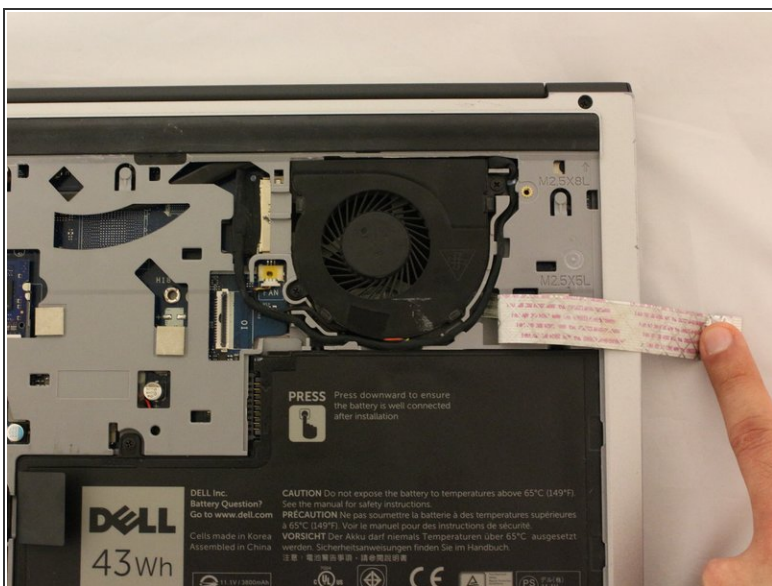
- Locate the fan system in the top right corner.

Step 6



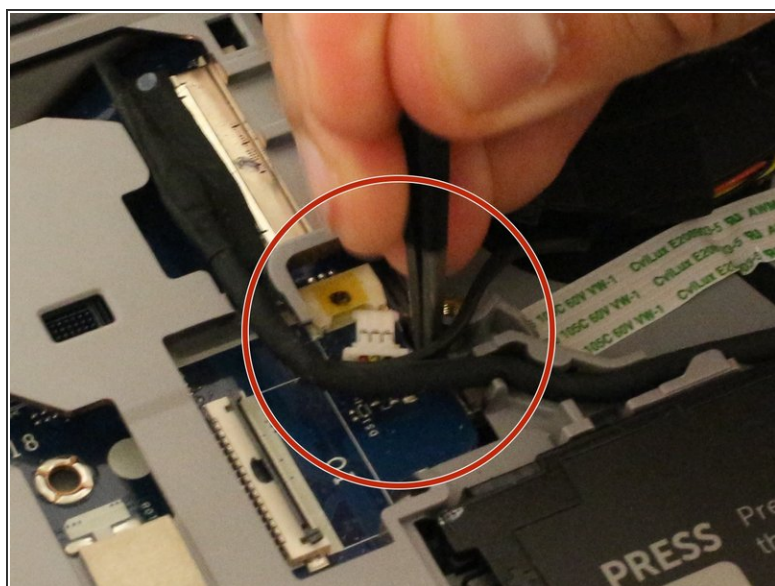
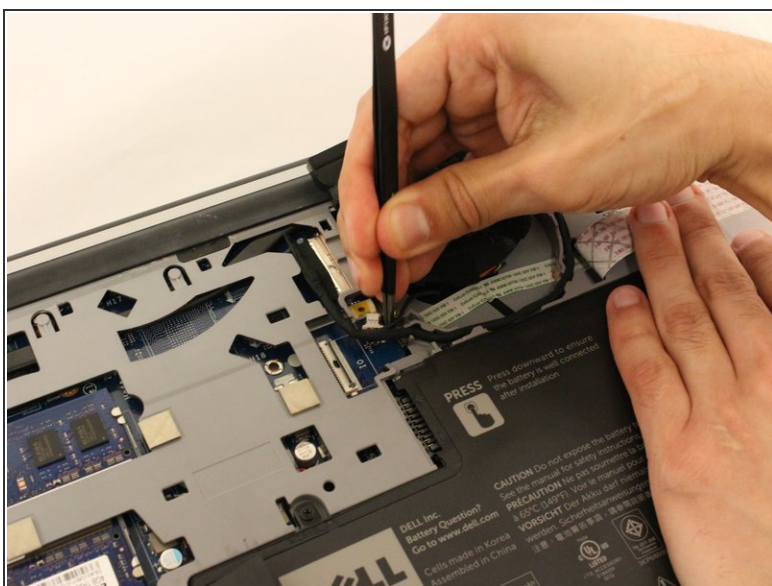
- Look along the wide line of white cable until you find the tab insert.
- Remove the thick white cable crossing over the fan, using the blue spudger shown, to flip the securing flap holding down the cable.

Step 7



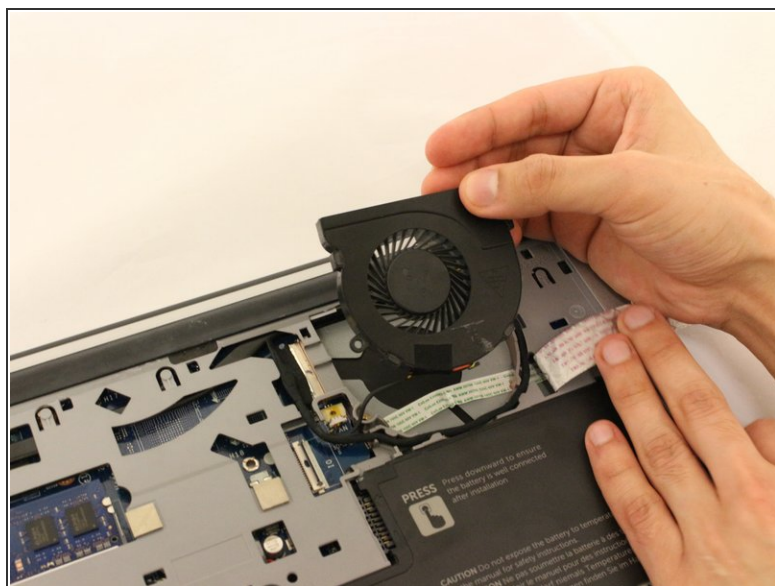
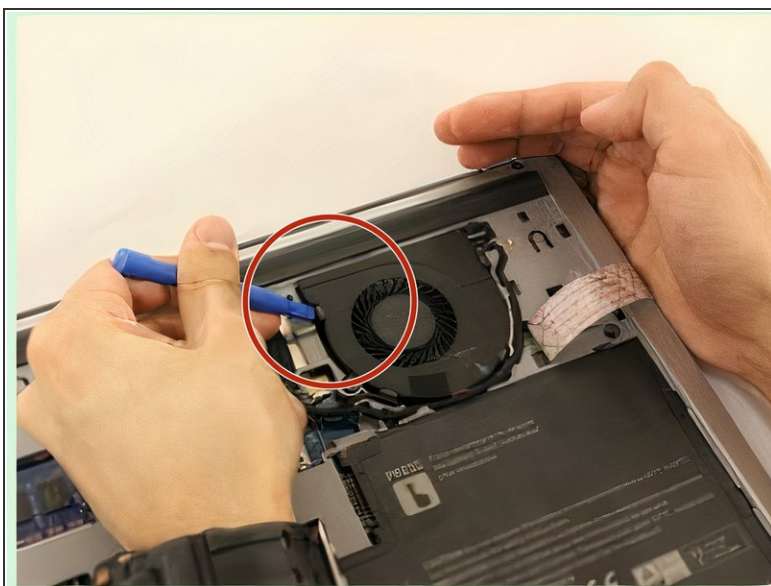
- Move the cable over to the side to reveal the fan screws.
- Remove the two black 5.70 mm screws from the fan.

Step 8



- Use tweezers to remove the small cable attached to the fan.

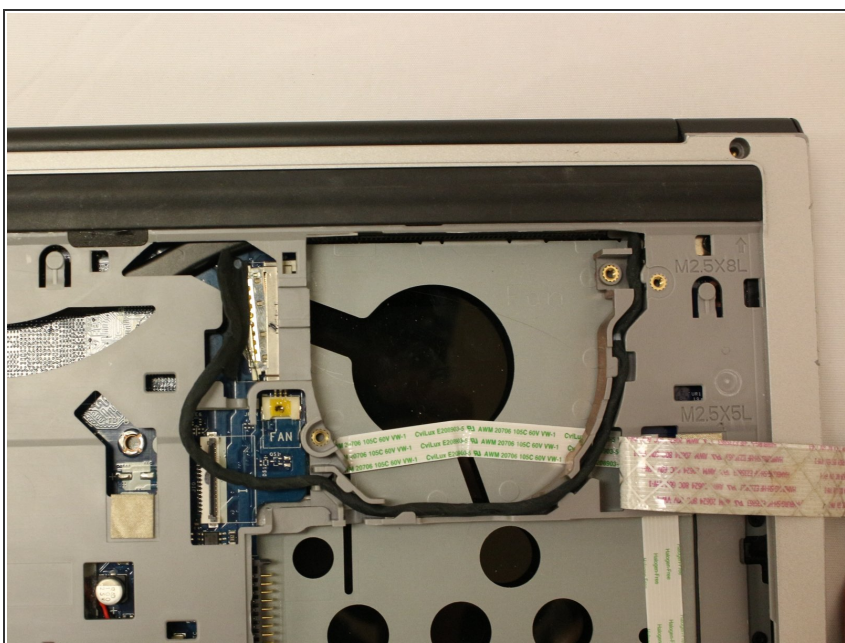
Step 9



- Using the opening tool, pry the fan out.

⚠ Remove the fan slowly to prevent damage to any wires or cables connected to the device.

Step 10



- ⓘ Now that the fan is removed, be sure to clean the area under the fan to prevent overheating.

To reassemble your device, follow these instructions in reverse order.