



HP Chromebook 11 G4 LCD Replacement

Cracked, broken, and scratched LCD screens can...

Written By: Jonah Silva



INTRODUCTION

Cracked, broken, and scratched LCD screens can make using your Chromebook difficult. Such damage to the LCD can be caused by accidental drops or impacts which are common in portable devices such as Chromebooks.

Due to the commonality of these issues, it is useful to know how to replace just the screen as opposed to replacing the entire device. This guide will instruct the user on how to replace just the LCD screen within their HP Chromebook 11 G4.

The screws that keep the plastic bezel attached to the Chromebook can be difficult to remove at times as they are very small and are positioned at an odd angle. Be careful to not strip the screws as it will make future screen replacements harder.

If your screen is severely cracked with shattered glass, use extra caution when taking the damaged display out of the device as to not cut yourself on the sharp glass.



TOOLS:

- [Spudger](#) (1)
- [Metal Spudger Set](#) (1)
- [Phillips #0 Screwdriver](#) (1)
- [Phillips #00 Screwdriver](#) (1)



PARTS:

- [11.6" Chromebook LCD N116BGE-EA2REV.C1](#) (1)
- [HP Chromebook 11 G3/G4 LCD Cable](#) (1)
- [HP Chromebook 11 G3/G4 Bezel](#) (1)

Step 1 — LCD



- Open the laptop.
- With the plastic spudger or your fingers, gently peel off the two thin adhesive layers at the left and right bottom edges of the screen.
- ⓘ Do not pry up the plastic bezel (monitor frame), just the adhesive layer.
- ⓘ If the adhesive layer isn't coming off, use a metal spudger.

Step 2



- Remove the two 3 mm Phillips #00 screws located underneath the adhesive layers that were removed in the previous step

Step 3



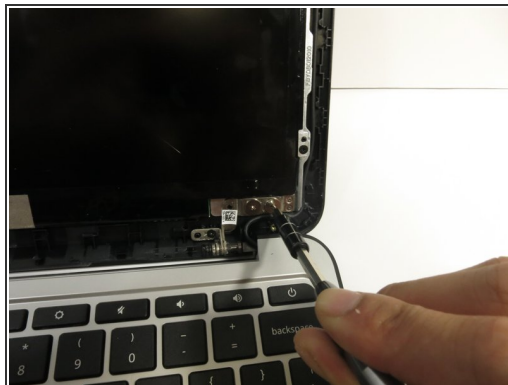
- Gently pry up the plastic bezel with the small, narrow end of the metal spudger.
 - Insert the long, flat end of the metal spudger into the gap.
 - Slide the metal spudger along the edge to disconnect the bezel from the laptop
- i** You should hear popping sounds as you slide the spudger along the edge.
- i** If the spudger gets stuck while sliding, it's okay to use more force.

Step 4



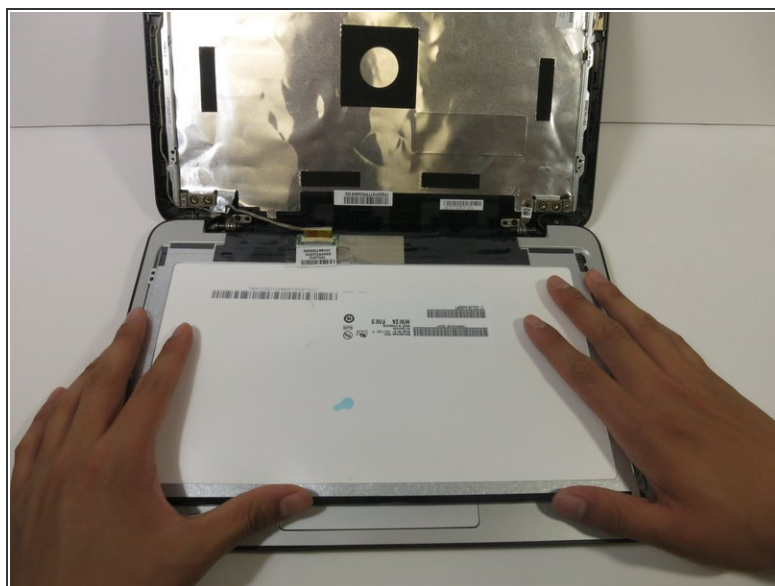
- Tilt the laptop screen as far back as possible
 - Hold the bezel with both hands, then pull the bezel towards you to disconnect the bottom edge of the bezel from the laptop.
- i** You may have to use extra force for this step

Step 5



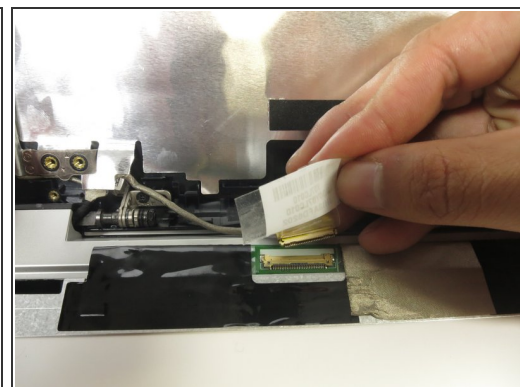
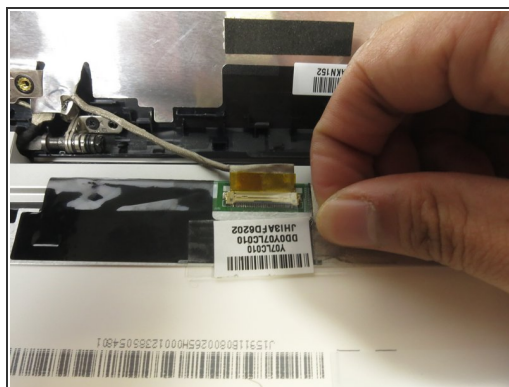
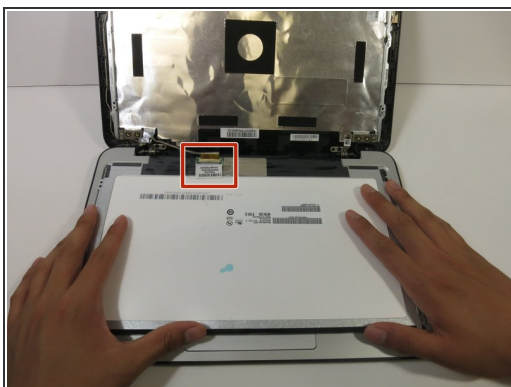
- Remove the four silver 4 mm Phillips #0 screws at the bottom of the LCD.
- Remove the four black 3 mm Phillips #00 screws along the perimeter of the LCD.

Step 6



- Lift the LCD off its mount and gently lay it facedown on the keyboard.

Step 7



- Peel off the clear sticker covering the display cable at the base of the LCD.
- Gently pull the display cable from the connector.

To reassemble your device, follow these instructions in reverse order.