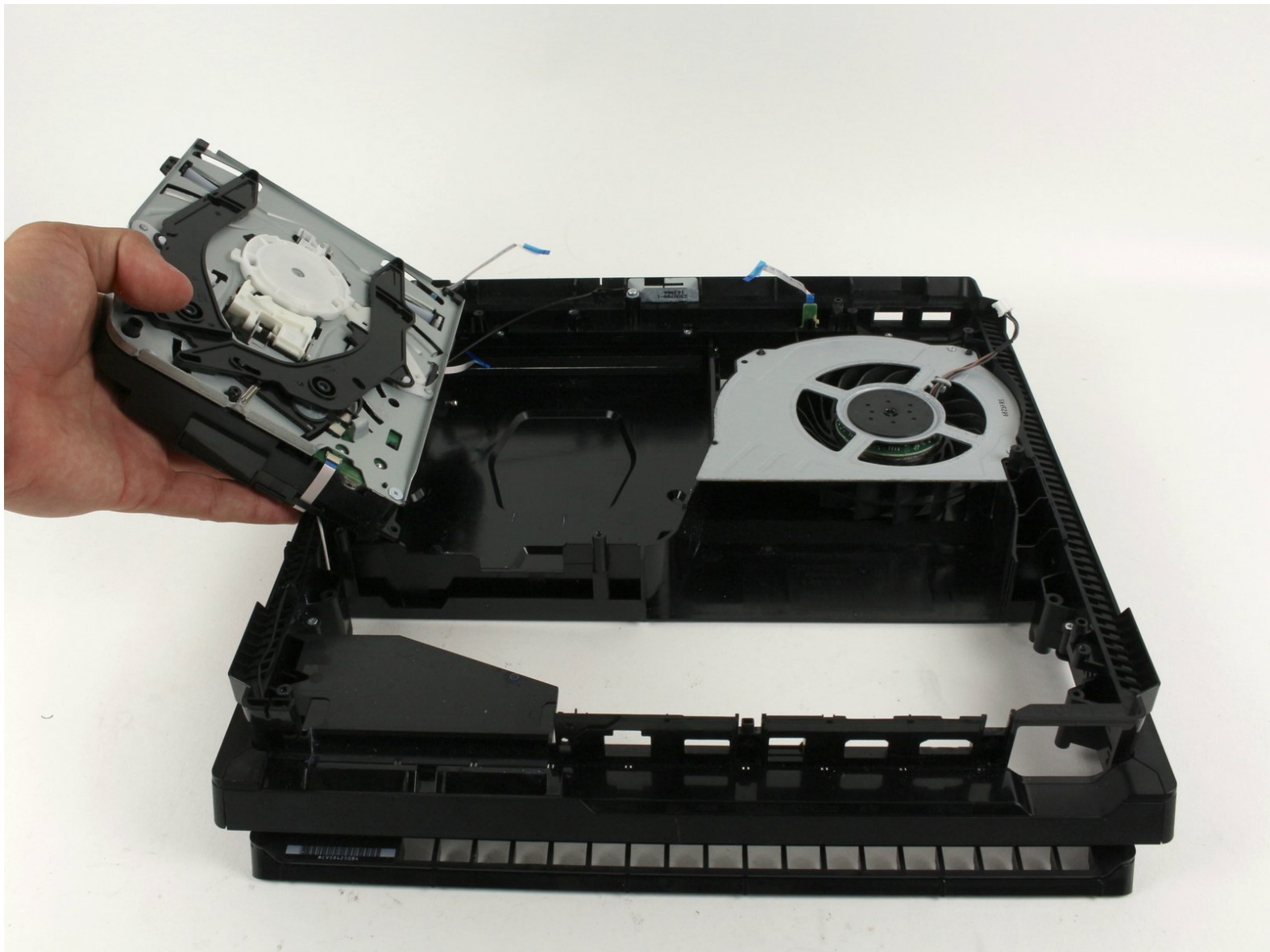




# PlayStation 4 Pro Optical Drive Replacement

This guide includes the steps necessary to...

Written By: Thomas



## INTRODUCTION

This guide includes the steps necessary to remove the optical drive in the PlayStation 4 Pro. This is one of the last things that is removable in the PS4 Pro, which means that just about everything else has to be removed first. This guide includes a large amount of disassembly, as well as warranty-voiding steps.



### TOOLS:

- [T8 Torx Security Bit Screwdriver](#) (1)
- [Phillips #1 Screwdriver](#) (1)
- [Phillips #0 Screwdriver](#) (1)
- [iFixit Opening Tool](#) (1)



### PARTS:

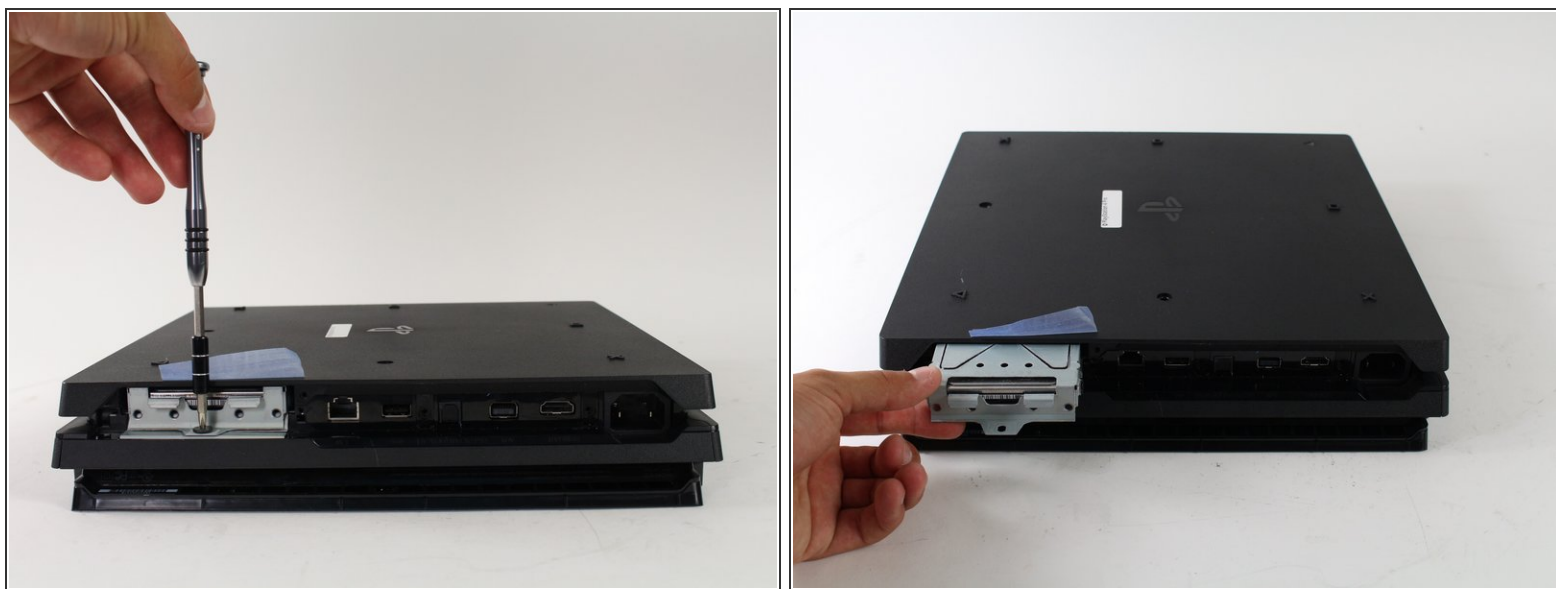
- [PlayStation 4 Pro Optical Drive](#) (1)

## Step 1 — Hard Drive Caddy



- Flip the console upside down.
- Use your finger to pull and snap off the plastic cover over the hard drive.

## Step 2



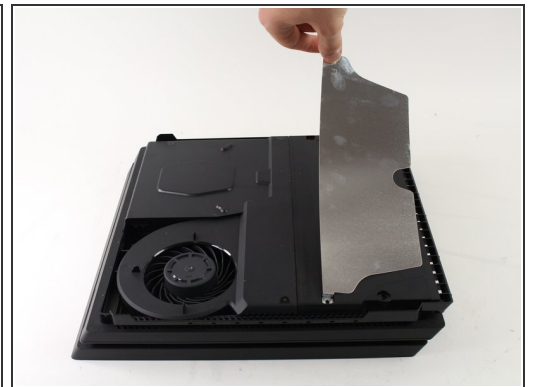
- Use a Phillips #1 Screwdriver to remove the single screw securing the hard drive caddy.
- Pull the hard drive caddy straight out.

### Step 3 — Power Supply Assembly



- Flip the console right side up.
- Grip the two corners located at the front of the device.
- Pull upwards until a loud click is heard.
- ⓘ This may require a lot of force, so do not be afraid to get a little rough with your console.
- After both corners detach, slide the cover backwards and lift off.

### Step 4



- Use a T8 Torx Security screwdriver to remove five screws from the rear of the device.
  - Two 31mm screws.
  - Three 10mm screws for the 7000 models; Two gray 10mm screws (upper and lower screws on the illustration) if the PS4 Pro is a 7100-series model.
- Remove the metal plate by pulling it up.

## Step 5



- Flip the console over so the bottom is facing up.
- Use a T8 Torx Security screwdriver to remove the three black 7mm screws in the back panel. (7000-series models only); or **one** 7mm screw (the middle one) with *7100-series* models **and** the warranty sticker to the left.
- Remove the bottom cover in the same way as the top cover. Grip the cover on both sides and pull up until it clicks. Then slide the cover off; **With 7100-series models**, pay attention to the two clips that replace the corresponding screws.

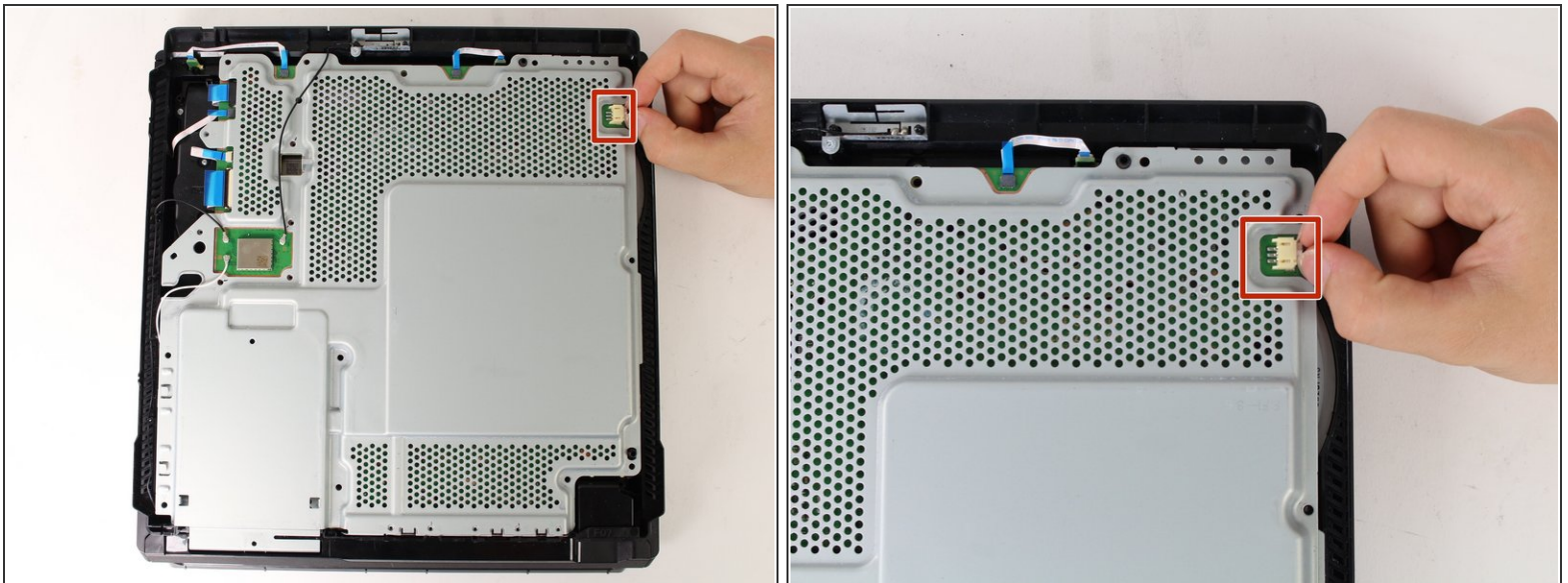


## Step 6



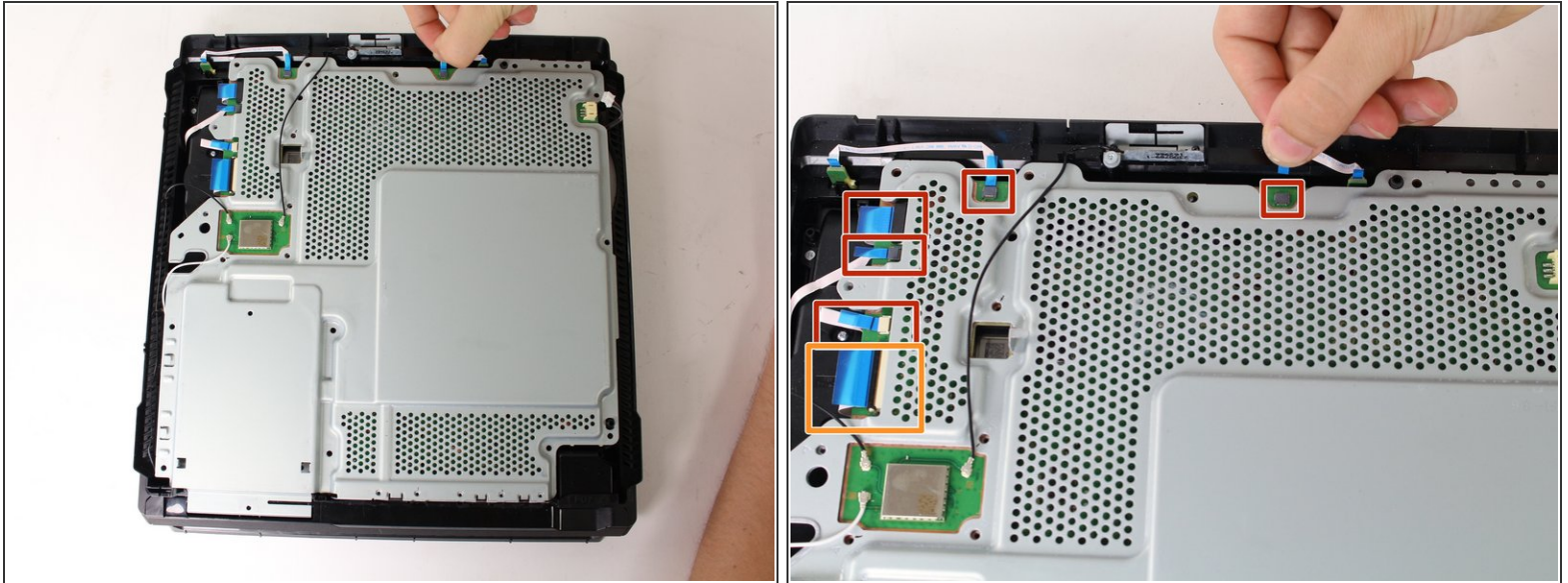
- Use a T8 Torx security screwdriver to remove the eleven 10mm silver screws from the metal plate.
- Use a Phillips #1 screwdriver to remove the eleven 4mm black screws from the metal plate.
- ❗ **7200-series models** have 13 additional 4mm screws around the top and right of the metal plate. These screws are indicated with a triangle. *This may apply to other models.*
- Use a spudger to disconnect the three antenna cables (two black and one white) by prying them straight up from their sockets.

## Step 7



- Pull the white fan connector straight out of the yellow mount on the motherboard.

## Step 8



- Pull out the five small, blue low profile cables connected to the metal plate.
- Lift the retaining flap on the ZIF connector of the large ribbon cable.
- Pull the large ribbon cable from its socket.

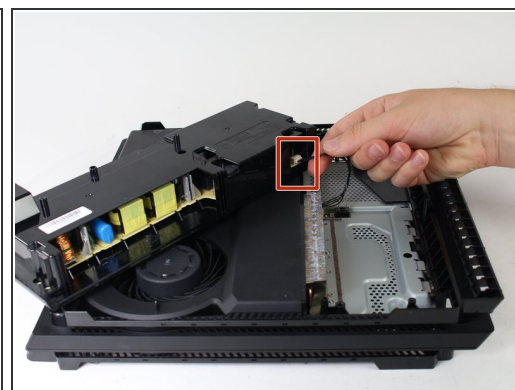
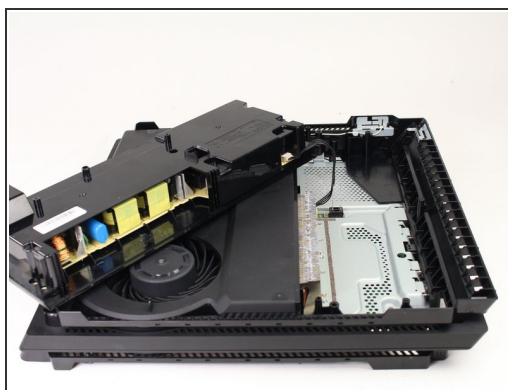
⚠ Do not pull on the biggest blue cable without lifting the tab first. Doing so can damage the connection.

## Step 9



- Pull up and remove the metal plate.

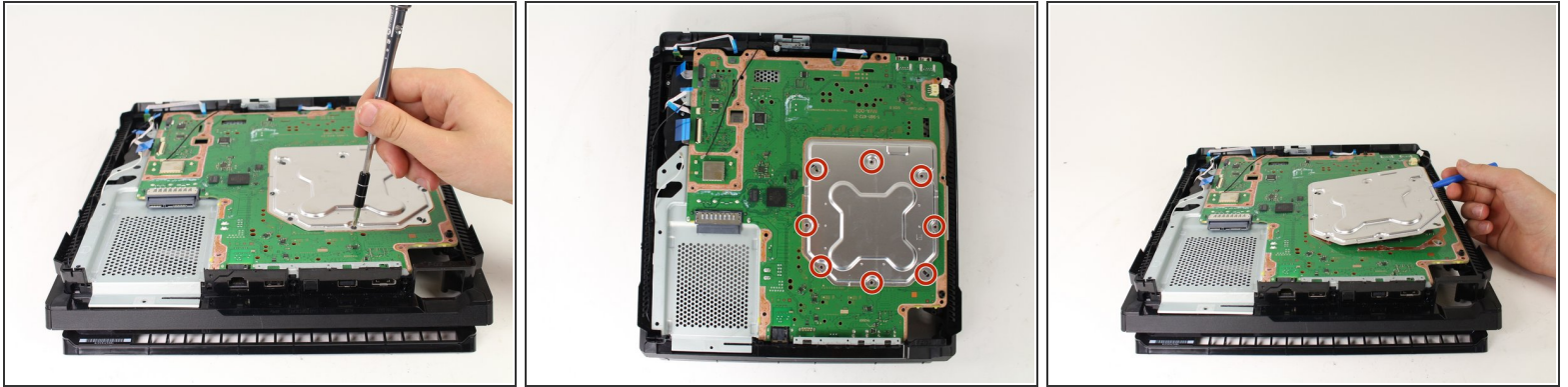
## Step 10



- Flip the console over to continue working on the top side.
  - Pull up on the power supply unit and set it on the console.
- ⚠ Be careful not to pull too far, the assembly is still connected at one point.
- Grip the connector behind the power supply and pull straight out.



## Step 11 — Motherboard



**i** If you are working on the **7200-series model**, this metal plate will have been already removed as part of the removing the larger motherboard plate. You may skip this step if this is the case.

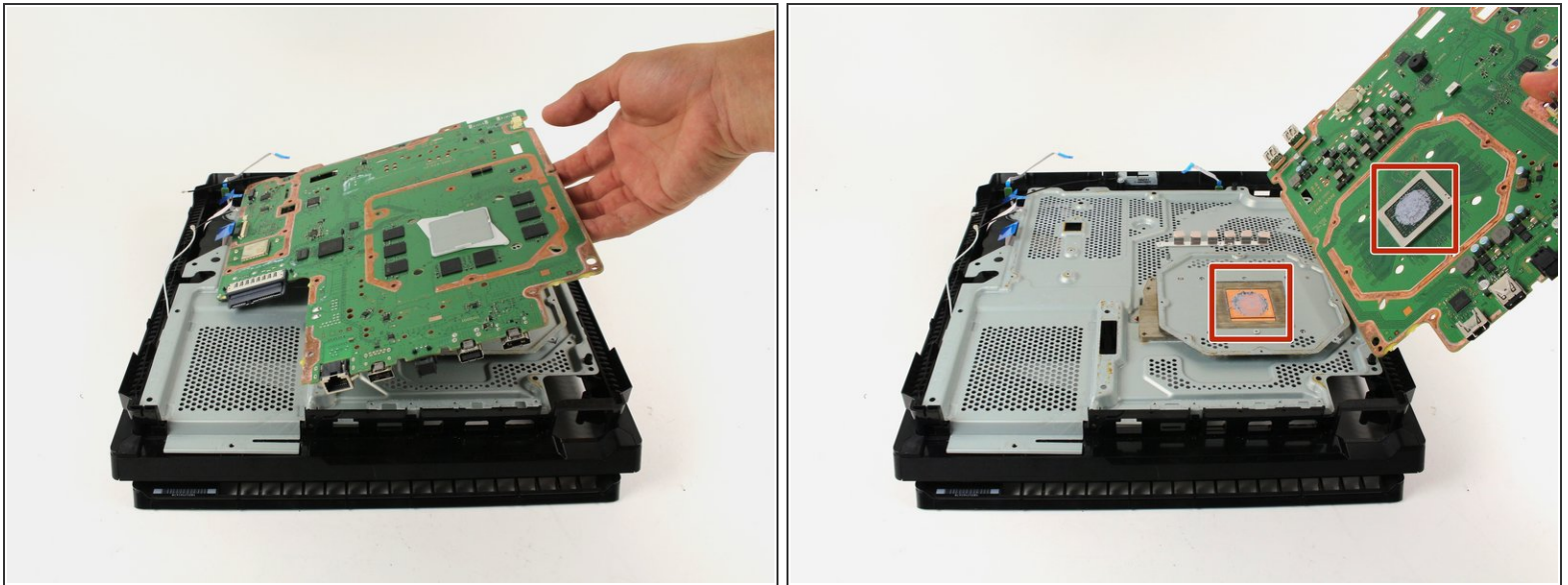
- Carefully flip the console over so the bottom is facing up.
- Use a Phillips #1 screwdriver to remove the eight 4mm screws on the metal plate with the X-like symbol.
- Use a plastic opening tool to remove the metal plate with the X-like shape.

## Step 12



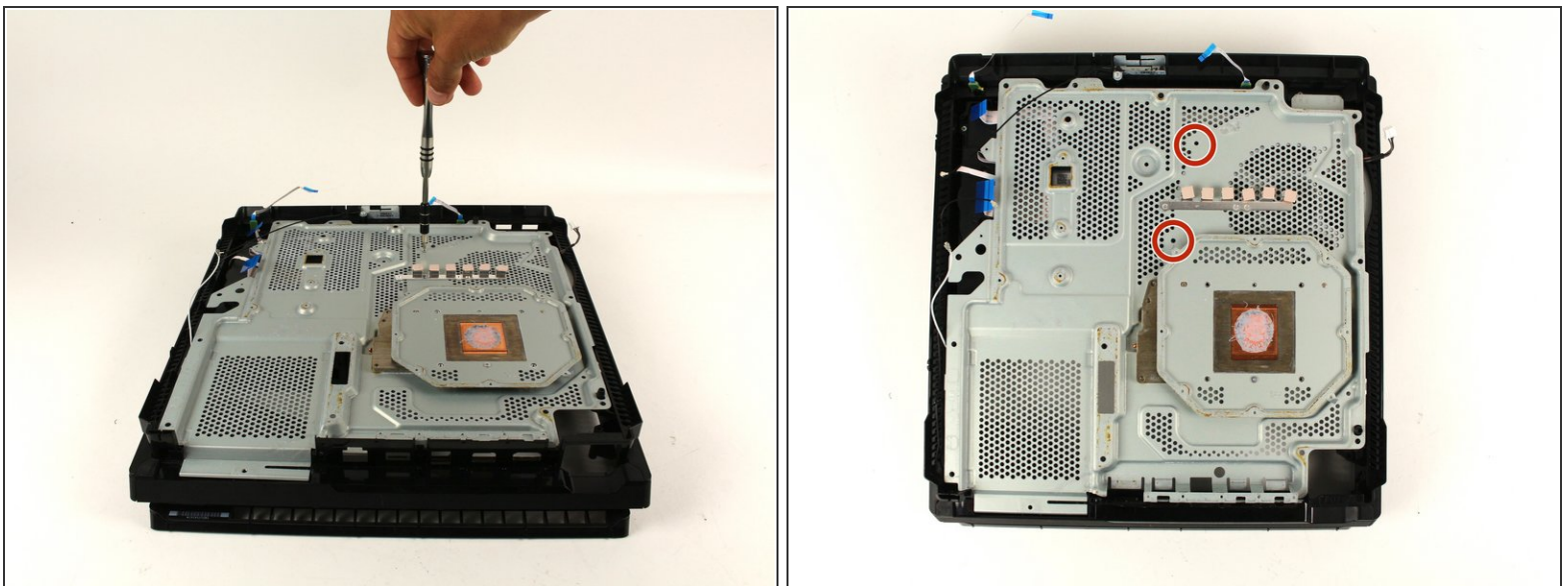
- Use a Phillips #1 screwdriver to remove the four 13mm screws on the X-shaped metal plate underneath.
- i** For **7200-series models** this is instead a S-shaped metal plate with 2 screws.
- Grip the X-shaped retaining bracket and lift straight up.

## Step 13



- Grip the edge of the motherboard and slowly lift upwards to remove it from the device.
- ☑ For reassembly, use [this guide](#) to reapply thermal paste between the motherboard and the metal plate underneath.

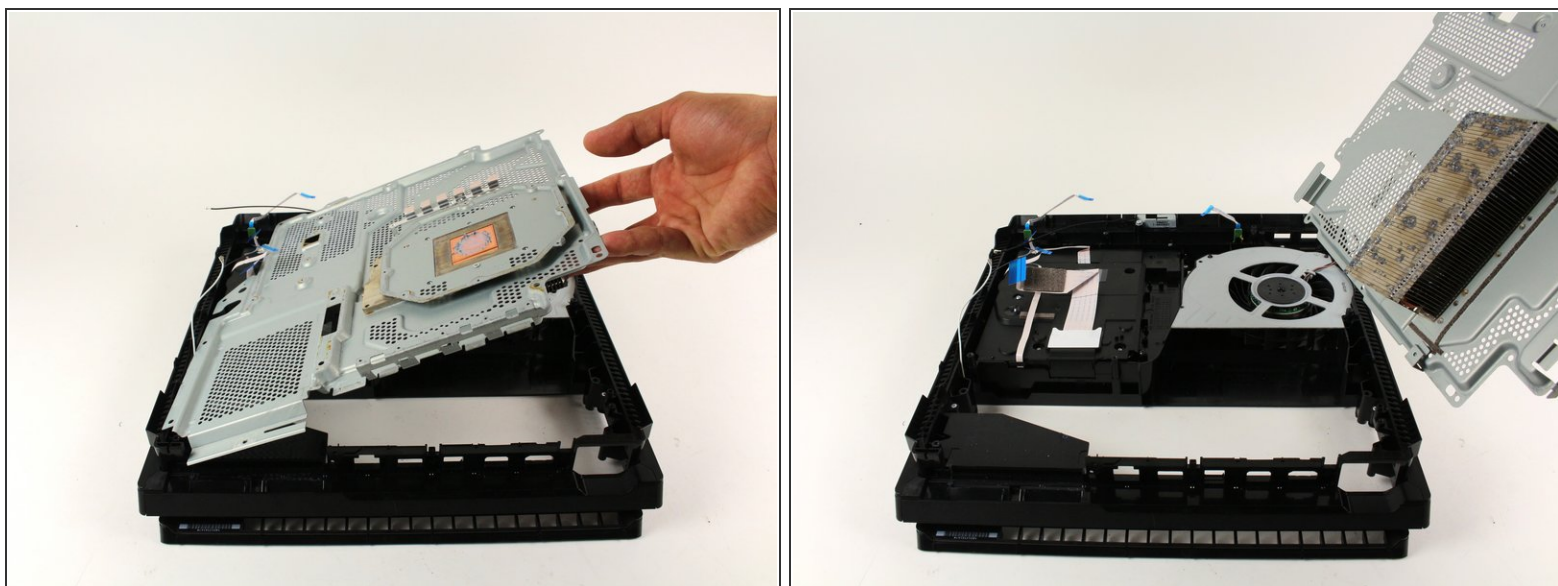
## Step 14 — Heat Pipe



- Use a Phillips #1 screwdriver to remove the two 6 mm silver screws from the metal plate.



## Step 15



- Lift the metal plate that is connected to the heat pipe straight up to remove it.

## Step 16 — Optical Drive



- Use a Phillips #0 screwdriver to remove the four screws.
  - One 30 mm screw.
  - Three 6mm screws.
- Grab the optical drive and lift up to remove.

To reassemble your device, follow these instructions in reverse order.

