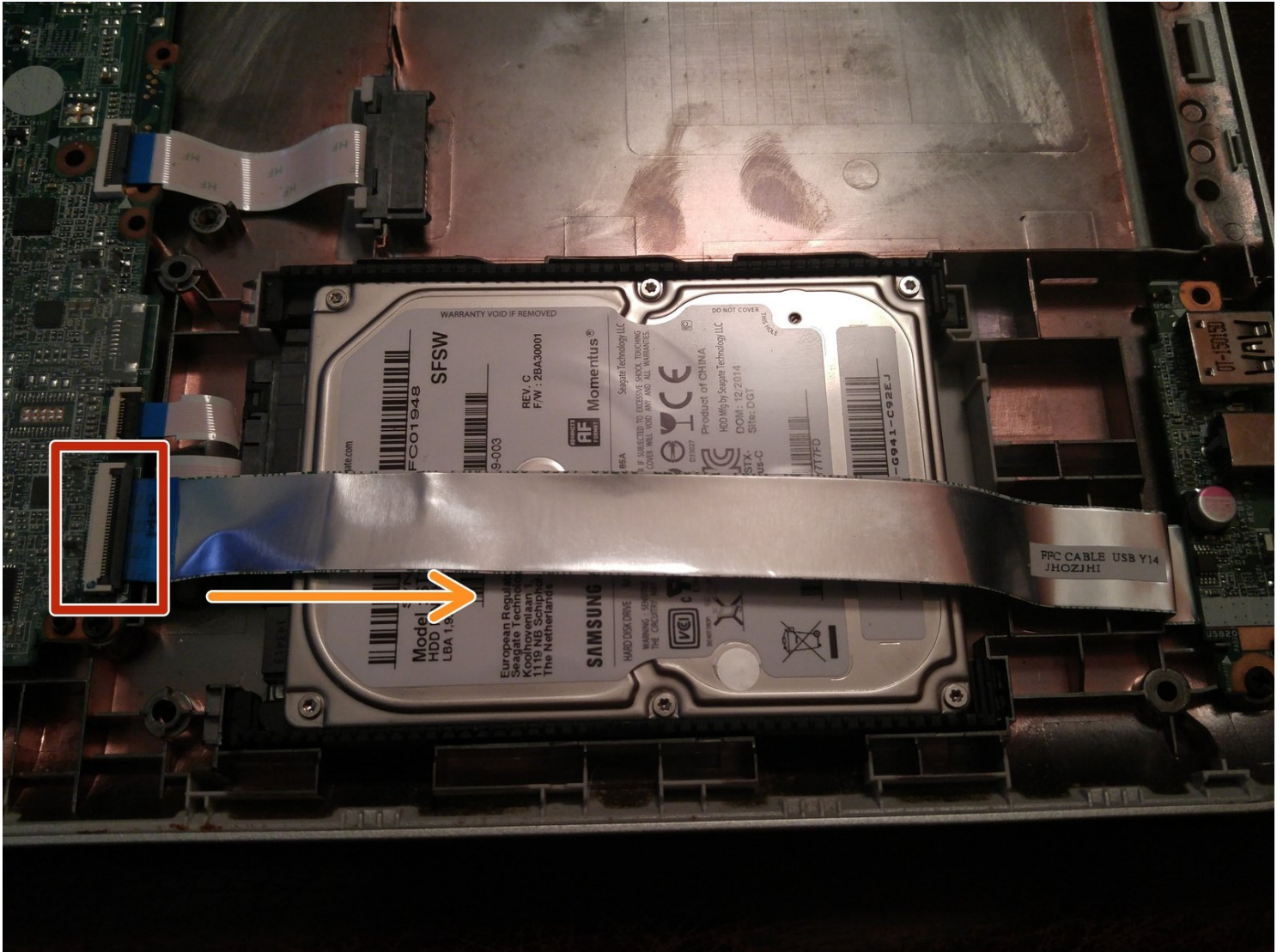




# HP Pavilion 15-p Hard Drive Replacement

PITA WARNING: THIS LAPTOP IS A MAJOR PITA TO...

Written By: Nick



# INTRODUCTION

**PITA WARNING: THIS LAPTOP IS A MAJOR PITA TO WORK ON DUE TO THE AMOUNT OF DISASSEMBLY REQUIRED TO ACCESS THE HARD DRIVE.** Plan on spending a lot of time sorting screws, and taking multiple parts off (which would not have been an issue if the laptop was designed with repair in mind). If you break the palmrest in a way requiring replacement, this will be a very expensive mistake! Take your time and know your skills before opening this laptop!

**AUTHOR'S NOTE (added for transparency):** Personally, I do not consider this a difficult repair; however, I know how to make these awful machines more workable to open for beginners.

If the hard drive in your system has failed or you just want to replace the existing drive in your system with an SSD or larger spinning drive, this guide will show you how to access the hard drive for replacement.

## Guide notes

- ***Sorting your screws is paramount. This laptop uses lots of screws and multiple lengths. The screws cannot be interchanged.***
  - ***Consider taking this laptop series to a repair shop if you cannot complete this repair due to how much needs to come off to access the drive, or read the entire guide FIRST.***
- **This laptop accepts 7mm and 9.5mm drives. Both drives use the same bumpers.**
- ***Test the computer partially disassembled BEFORE reassembly.*** Complete disassembly is required to correct any issues.



### TOOLS:

[Essential Electronics Tool Kit](#) (1)

*Only needed if you are supplying your own SSD or skipping the fix kit.*

[Magnetic Project Mat](#) (1)

*Optional. Do not place original HDD on this mat, as it is magnetic (unless it has failed!).*



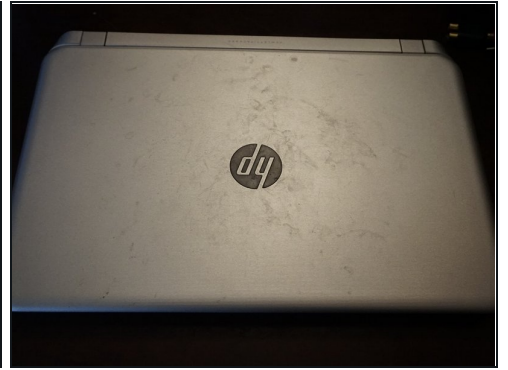
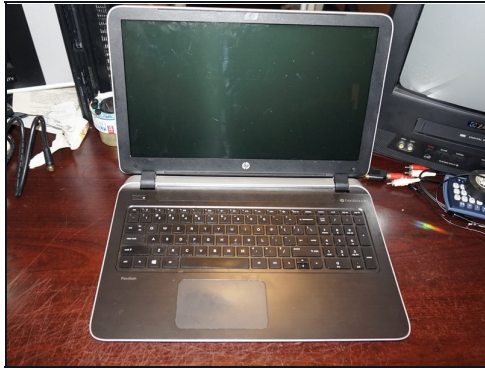
### PARTS:

[Crucial MX500 1 TB SSD](#) (1)

[2 TB SSD](#) (1)

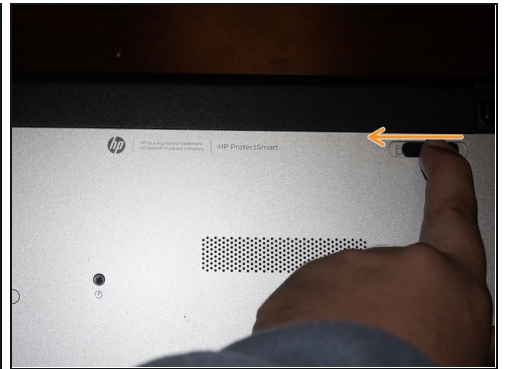
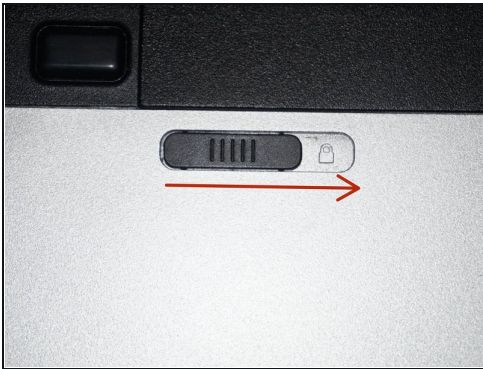
---

## Step 1 — Prepare the laptop



- Shut the laptop down until it is hibernated or shut off. ***Do not remove power until both lights turn off.***

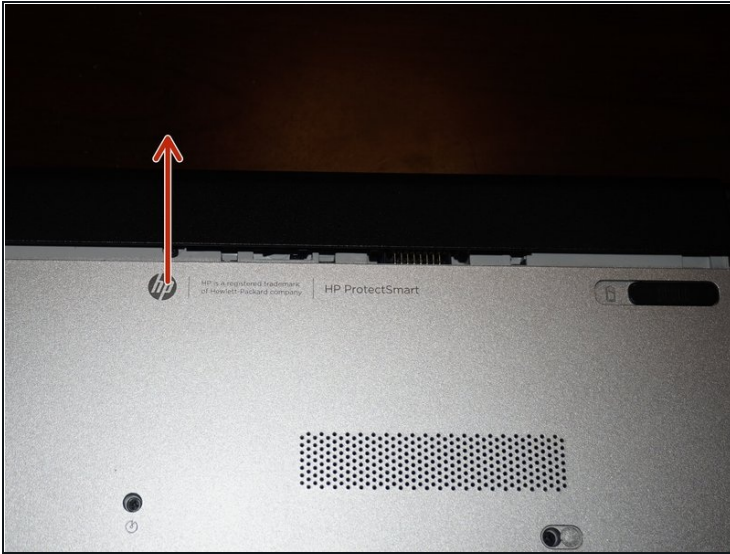
## Step 2 — Unlock the battery



- Once the computer is off, remove the battery. Switch the locking tab to the unlocked position.

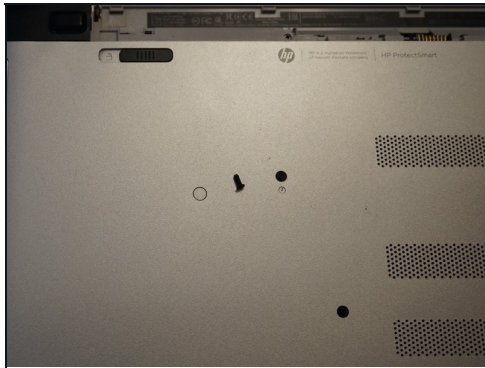
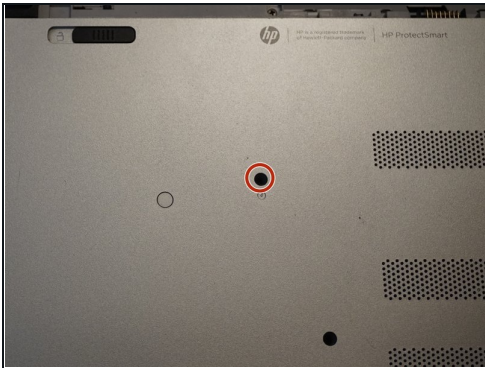


### Step 3 — Remove the battery



- Remove the battery. Pull the battery forward and remove it from the laptop.

### Step 4 — Remove the optical drive



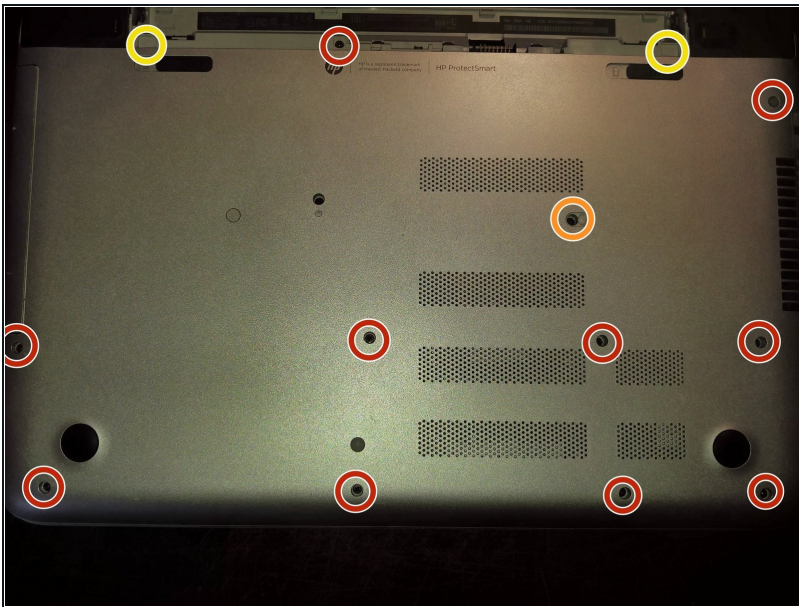
- Remove the screw that holds the optical drive in. To do this, use a **Phillips #0** screwdriver. Slide the optical drive out once the screw is removed.

## Step 5 — Remove the screws under the optical drive



- ★ The system used in the guide only came with one screw. If yours came with three, sort accordingly.
- With the palmrest screws removed, remove the screws under the optical drive. Use a **Phillips #000** screwdriver.

## Step 6 — Remove the bottom screws



- Once the battery and optical drive are removed, remove the **11** screws that secure the palmrest.
- This screw is hidden by a sticker. If lost/damaged, it is cosmetic.
- **Not found on all models.** On some models, there are screws in this area. ***If you see screws here, they must be removed.***

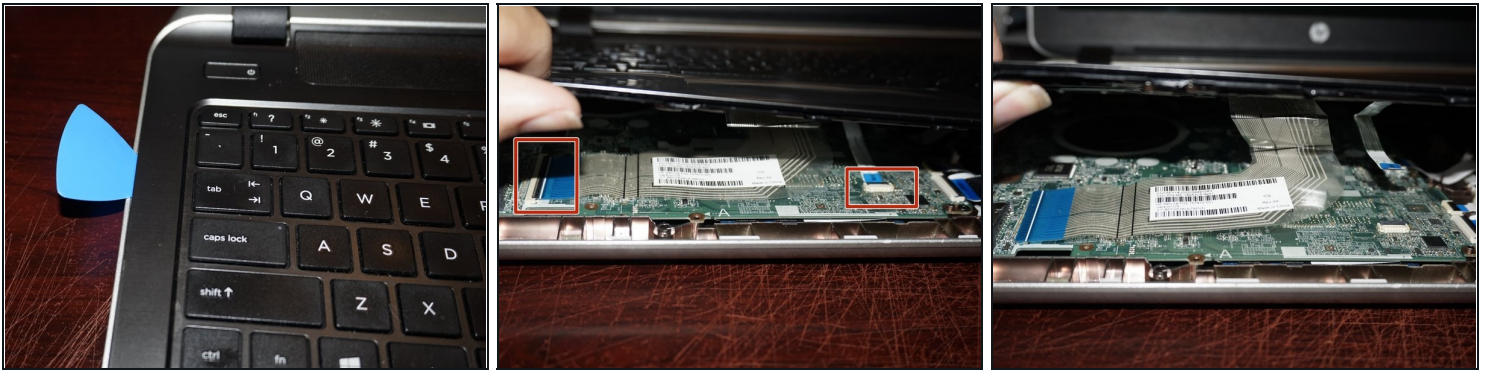
## Step 7 — Remove the hinge caps



- ☒ If you choose to reuse the original pads, stick them to the hinge caps to preserve the adhesive.
- Remove the hinge caps. To do this, remove the rubber pads. Use a **Phillips #0** screwdriver.
- Remove the screws under the hinge caps. To do this, use a **Phillips #0** screwdriver.



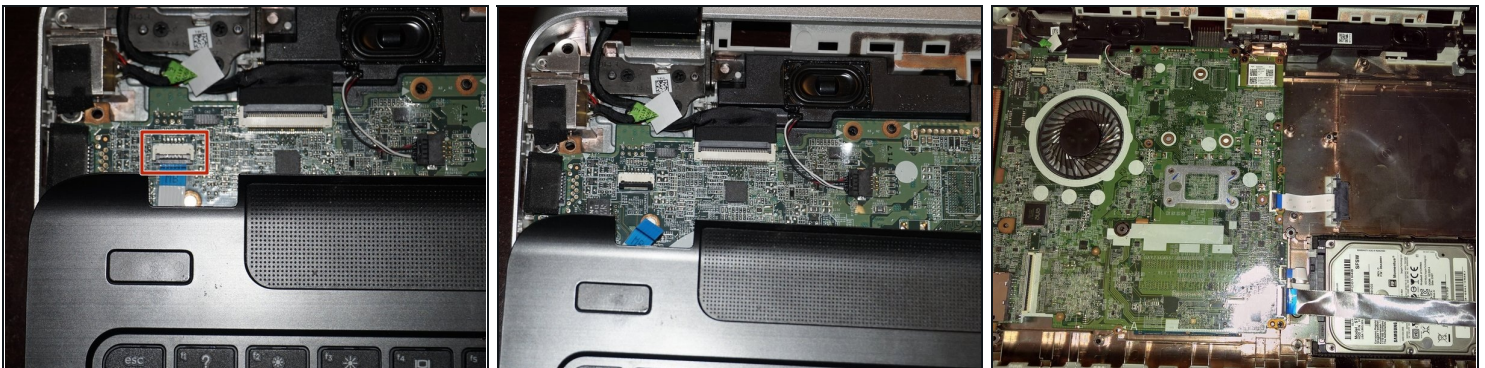
## Step 8 — Unsnap the palmrest



**⚠ Do not fully remove the palmrest - the power button is still connected to the motherboard.**

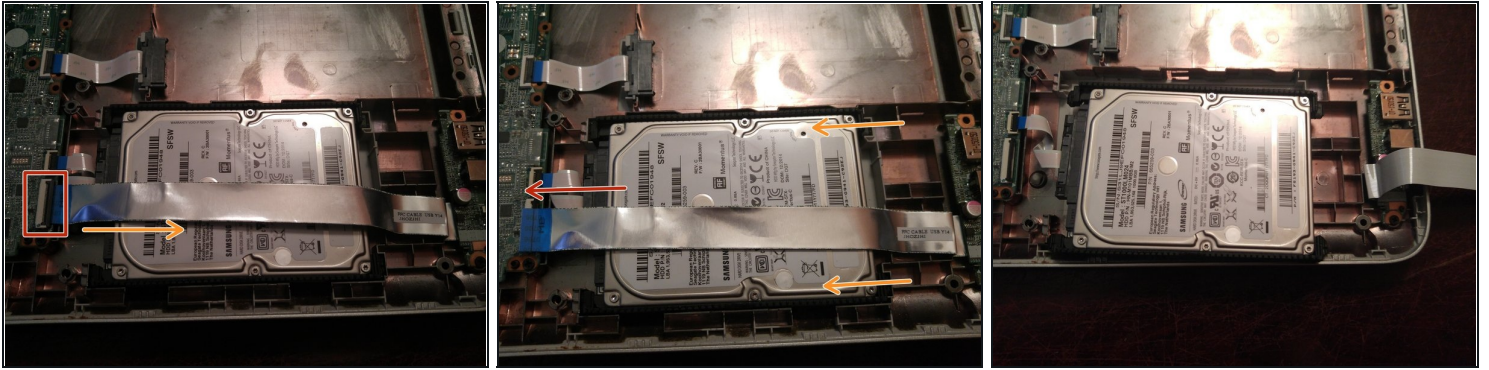
- ☑ If you are having trouble removing the palmrest, try using a guitar pick.
- Run a plastic tool around all 3 sides of the palmrest. Once they are loose, disconnect the keyboard and trackpad. **Flip the black plastic tabs on the connectors up and disconnect the cables.**
- Once the keyboard and trackpad are disconnected, the palmrest can be lifted up. **In some cases, further prying may be needed.**

## Step 9 — Disconnect the power button



- With the keyboard and trackpad disconnected, disconnect the power button. **Flip the black tab up and remove the palmrest.**

## Step 10 — Disconnect the flat flex



**⚠ If this guide is used as a prerequisite, the hard drive may not need to be removed.**

**ⓘ The I/O daughterboard can be removed if it is in the way.**

- Disconnect the flat flex cable over the hard drive. To do this, lift the black locking tab up and remove the cable from the ZIF socket.
- To remove the hard drive, tilt it forward starting with the SATA interface. Once it is removed, set it aside as shown.
- Disconnect the drive cable. Wiggle the cable off until it is released. ***Do not forcefully remove the cable. Unserviced "virgin" systems may require more force.***



## Step 11 — Remove the drive bumpers



- ⚠ If your hard drive has a plastic sticker over the PCB and an SSD is installed, put this in the chassis in case a traditional hard drive is installed later.**
- ⚠ If your drive has a plastic sticker over the drive PCB, this *MUST* be transferred to the new drive.**
- Remove the drive bumpers from the old drive. Transfer these to the new hard drive.

To reassemble your device, follow these instructions in reverse order.

**Once tested and reassembled, you will need to install an operating system. Install whatever OS you like.**