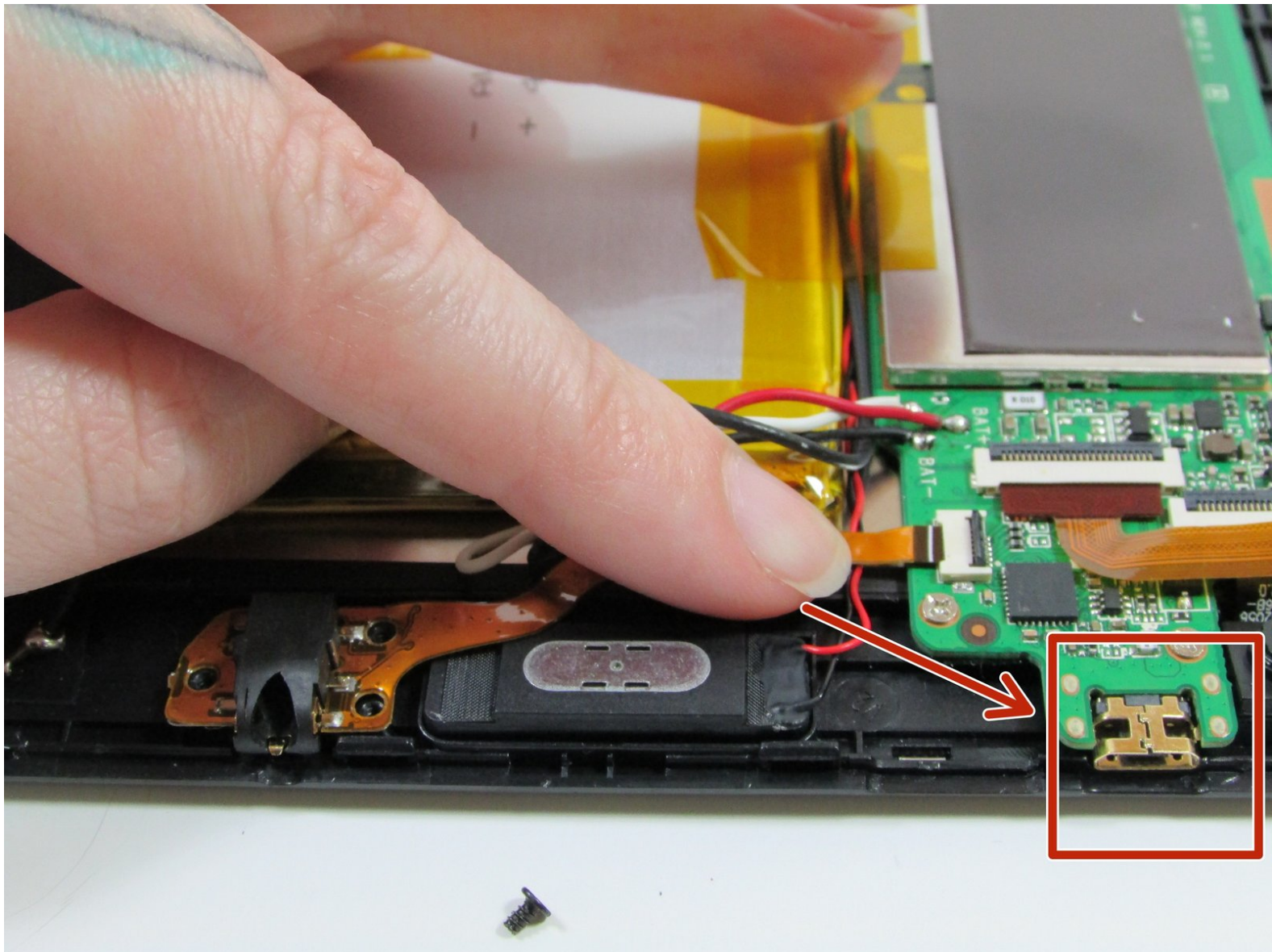




NuVision TM800A510L Charging Port Replacement

This Guide is to assist those who have found that their charging port for their device won't let the device charge correctly and needs replaced.

Written By: Kelsey Riggs



INTRODUCTION

Your time will be split between removing the back from the device and de-soldering. The charging port itself is actually soldered onto the bottom of the motherboard. To access it, it is best to remove the motherboard from the device.



TOOLS:

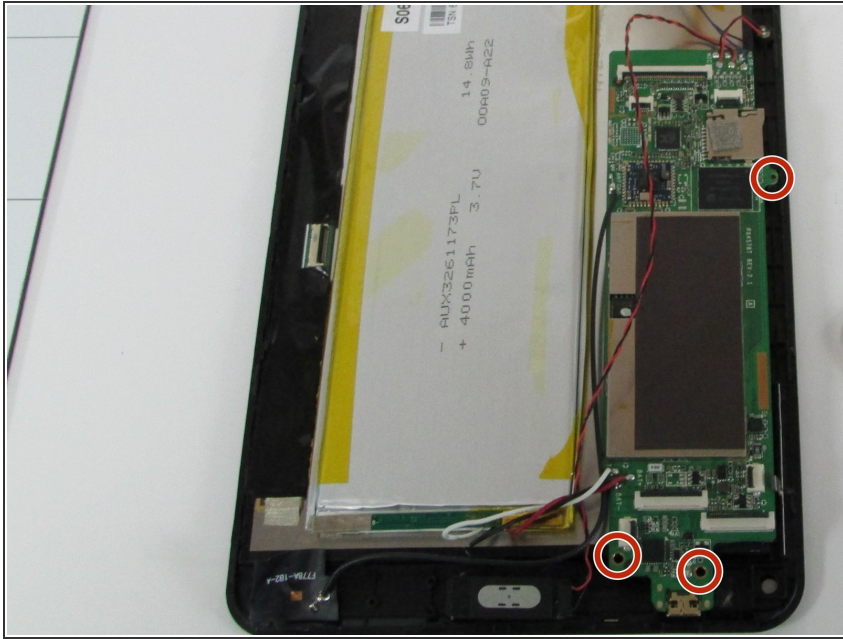
- [Soldering Iron](#) (1)
 - [Desoldering Braid](#) (1)
 - [Heat Gun](#) (1)
 - [iFixit Opening Tools](#) (1)
 - [Mako Driver Kit - 64 Precision Bits](#) (1)
-

Step 1 — Charging Port



- Use a Heat Gun to loosen the adhesive on the underside of the back cover.
 - Use some prying tools to lift the back cover off of the device.
- i** I recommend heating up the device up to 'just barely too hot to touch' and then prying sides up one at a time.
- !** Although, you can use either plastic or metal prying tools, metal prying tools may scratch the device. Make sure not to damage power and volume buttons when prying the cover off as well.

Step 2



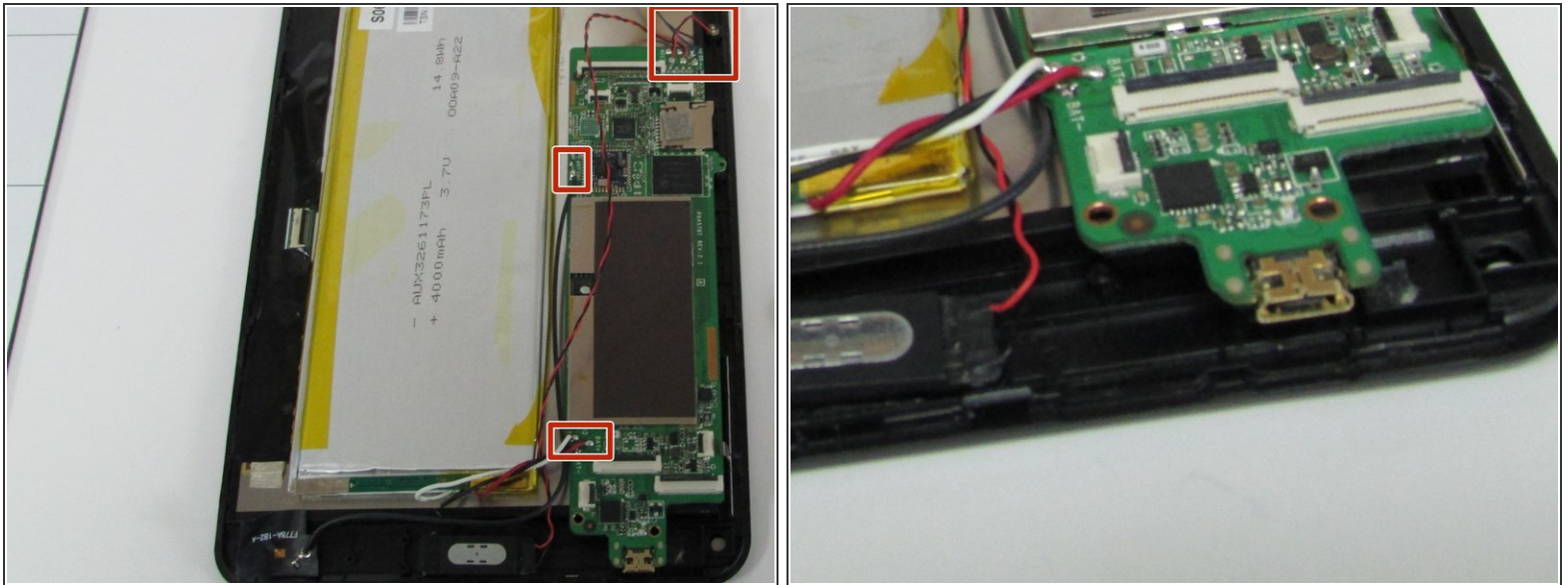
- Unscrew the motherboard.

Step 3



- Make sure all ribbons are disconnected.

Step 4



- Desolder the Motherboard- this will make it easier to get to the charging port without breaking any cords.
- Flip the Motherboard over and desolder the charging port from Motherboard.

To reassemble your device, follow these instructions in reverse order.