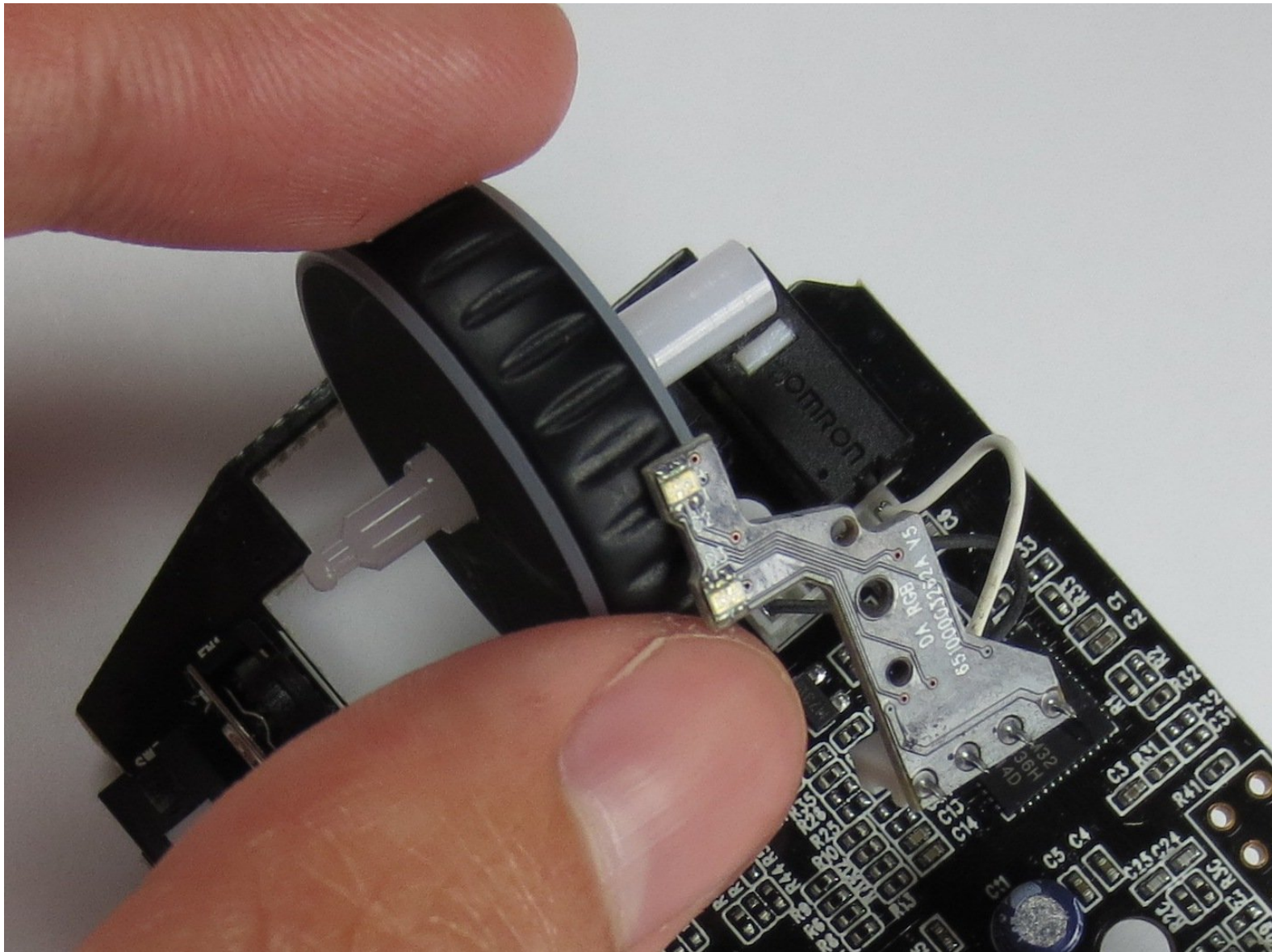




# Razer DeathAdder Chroma Scroll Wheel Replacement

This guide will inform you on how to access and replace the scroll wheel for the DeathAdder Chroma.

Written By: Corrie Tung



---

## INTRODUCTION

The Razer DeathAdder Chroma may experience faulty scroll wheel operation, such as a stuck wheel or having a non-functional scroll wheel click. This guide will show you how to access the scroll wheel for cleaning or replacement.



### TOOLS:

- [Phillips #0 Screwdriver](#) (1)
  - [Phillips #000 Screwdriver](#) (1)
  - [Spudger](#) (1)
-

## Step 1 — Outer Casing



- ❗ Opening the mouse casing will void any warranty that exists for the mouse.
- Turn the mouse over so the bottom is facing up.

## Step 2



- Use the blunt end of the spudger to pry the adhesive rubber pads from the top left and right edges.



### Step 3



- Use a Phillips #0 screwdriver to remove two 6.7 mm screws.

### Step 4



- Use your fingers to identify the location of the screw under the bottom label.

## Step 5



- Use a Phillips #0 screwdriver to remove one 6.7 mm screw.
- ⓘ Clear the label away from around the screw for easier removal.

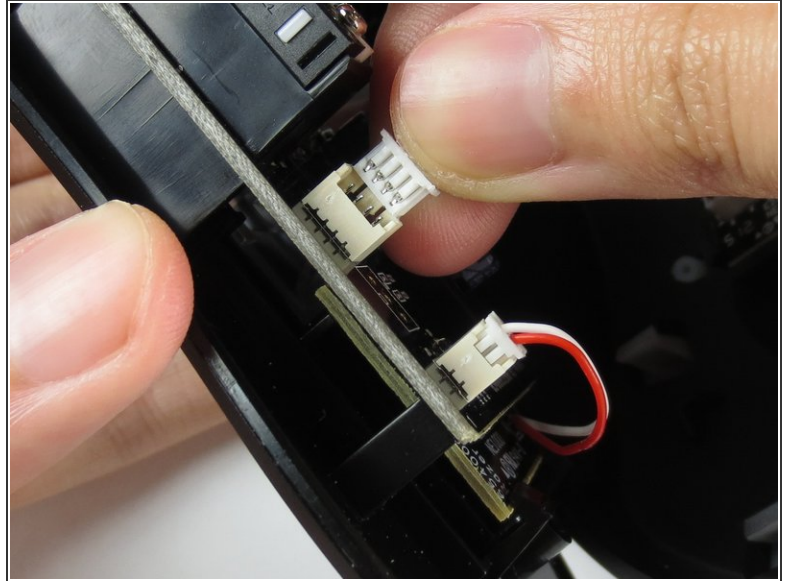
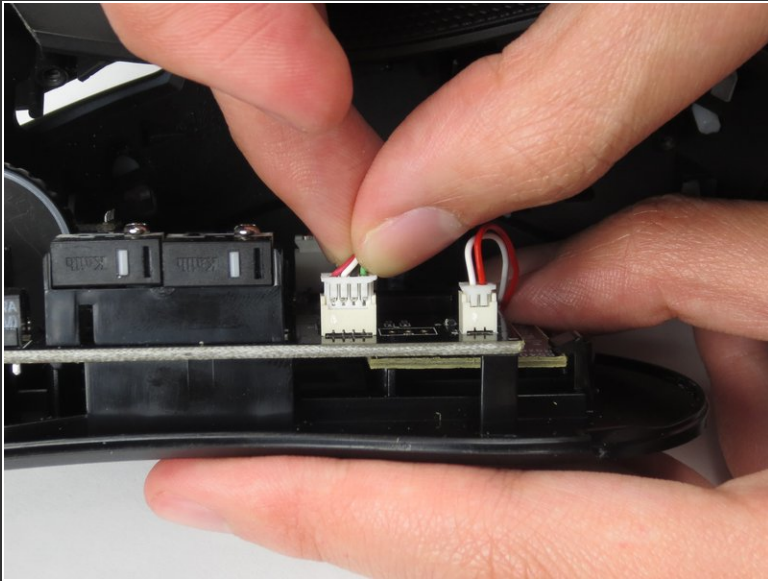
## Step 6



- Turn the mouse over so the bottom is facing down.
  - Separate the top casing from the bottom base by pulling the top casing upwards.
- ⚠ Separating the casing too quickly could damage the ribbon connector between the motherboard and the LED lights.



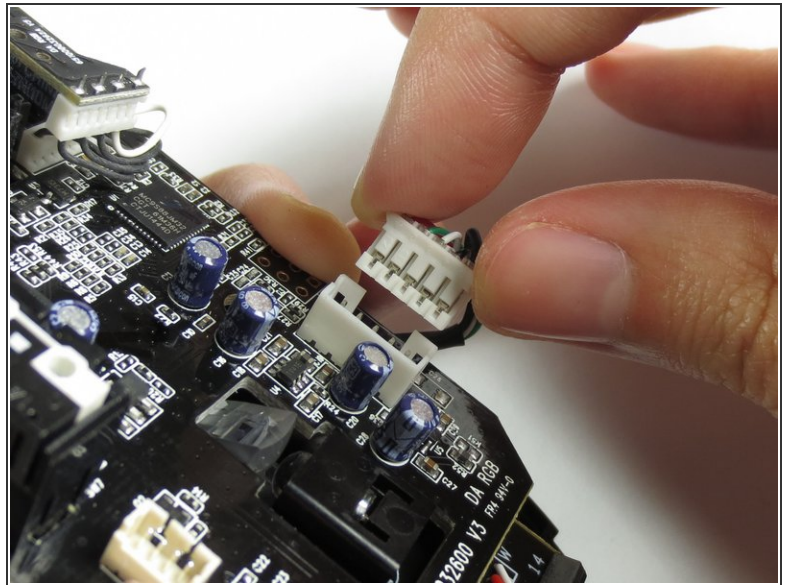
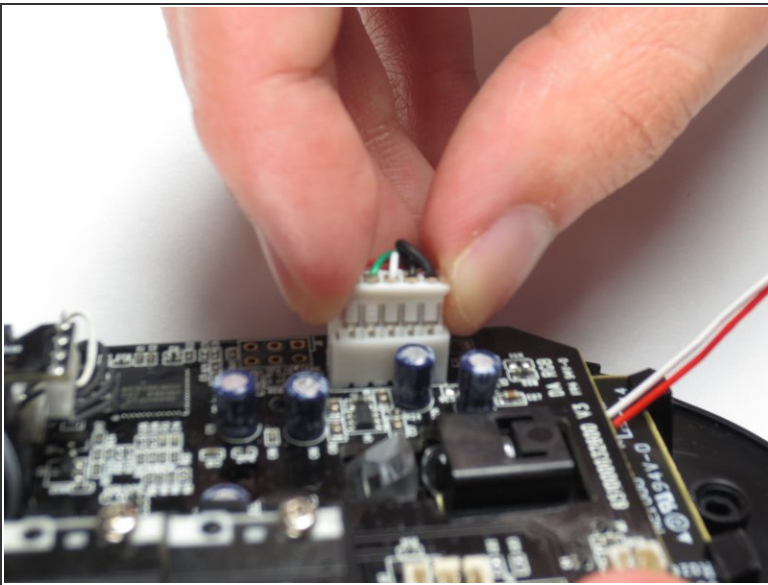
## Step 7



- Disconnect the ribbon connector between the motherboard and the LED lights by pulling upward.

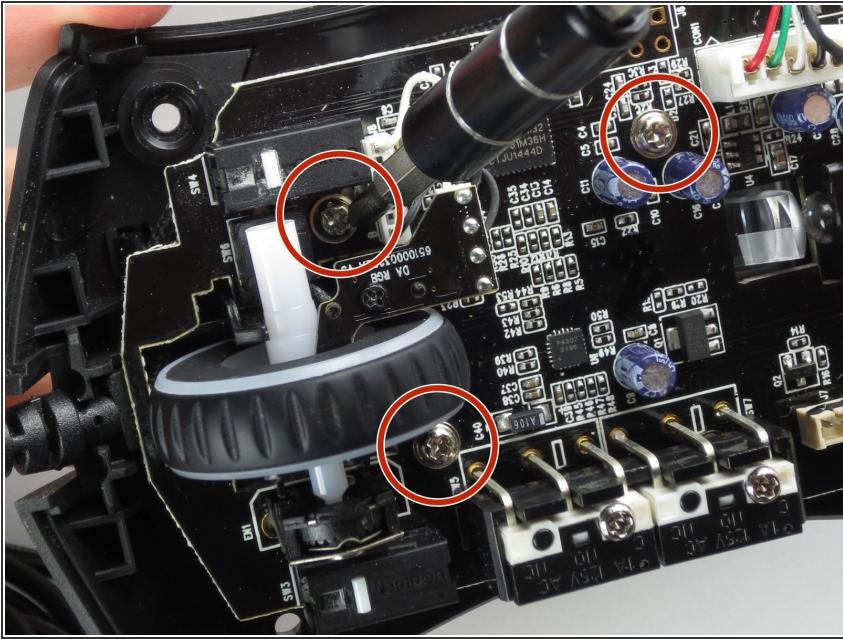
⚠ Pulling too hard could damage the wire connections.

## Step 8 — Motherboard



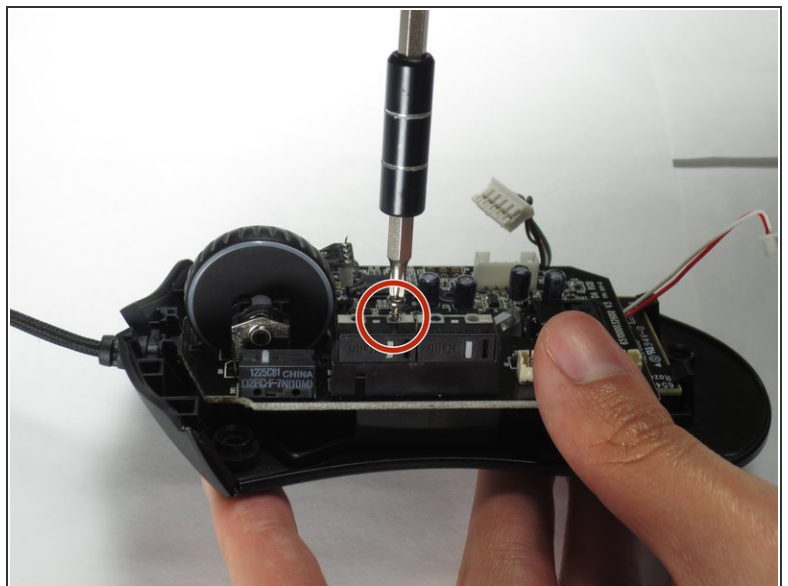
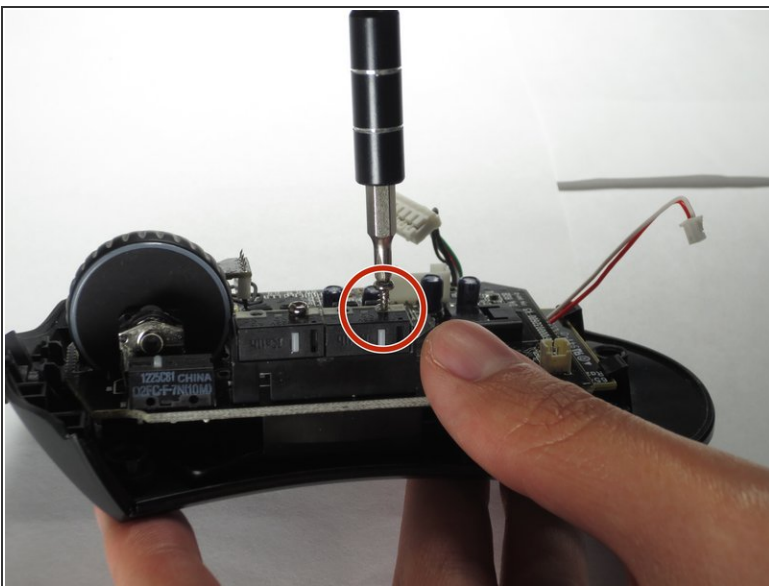
- Disconnect the ribbon connector between the motherboard and the USB cable by pulling upward.

## Step 9



- Use a Phillips #0 screwdriver to remove three 5.5 mm screws.

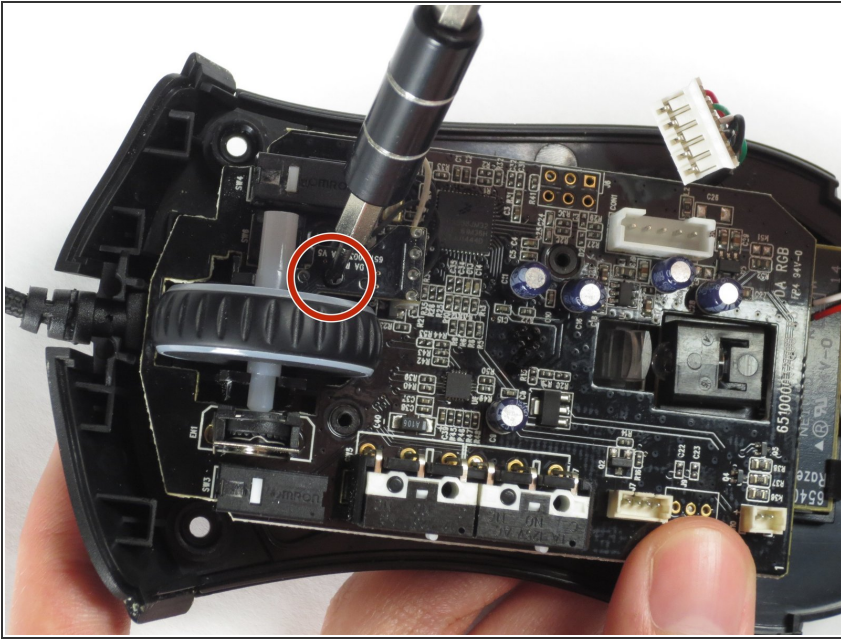
## Step 10



- Use a Phillips #0 screwdriver to remove two 11.5 mm screws on the side buttons.

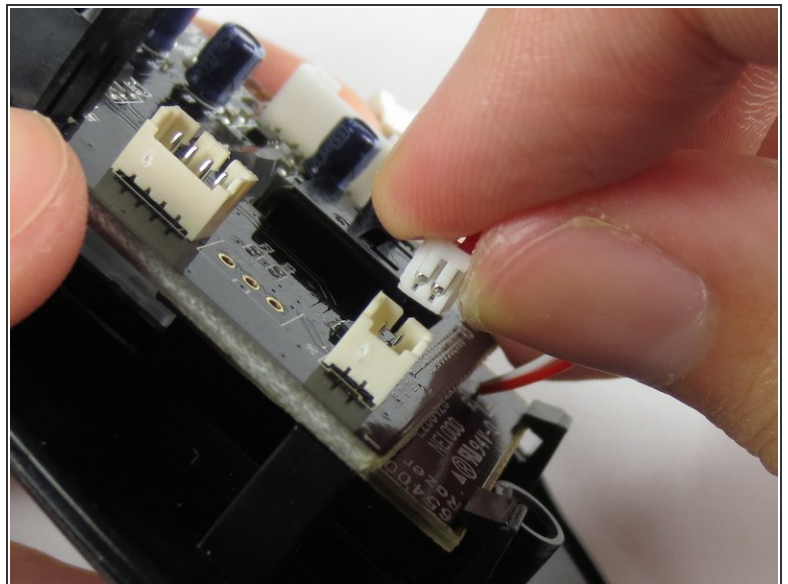
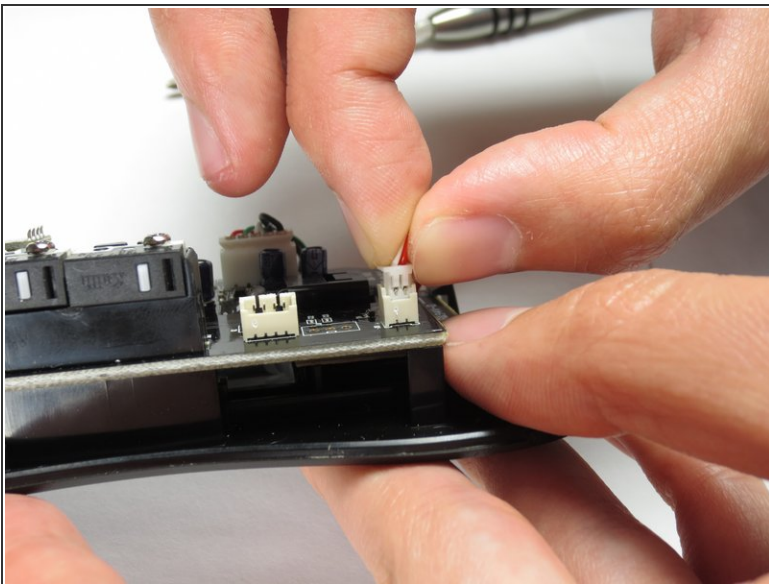


## Step 11



- Use a Phillips #000 screwdriver to remove one 5.0 mm screw.

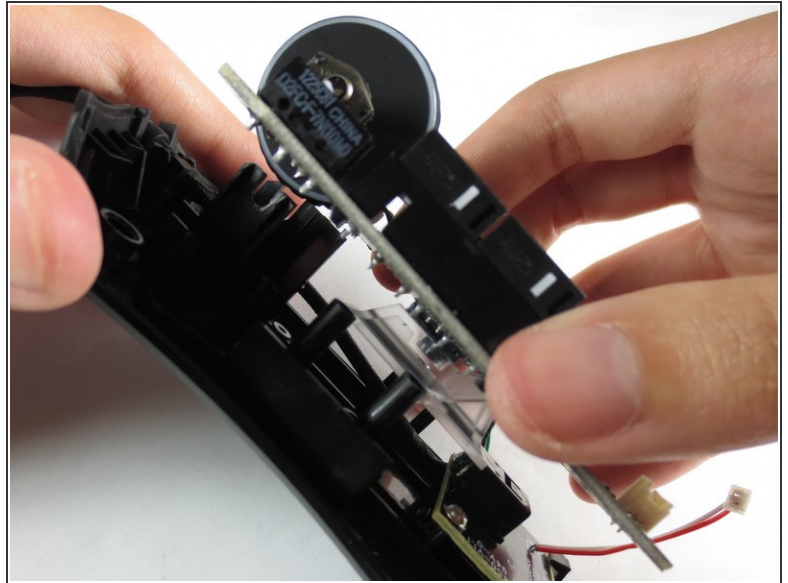
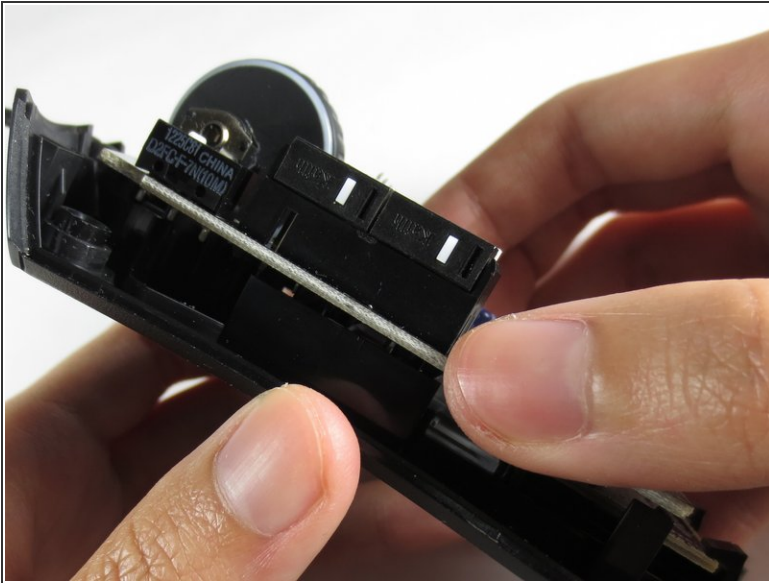
## Step 12



- Disconnect the ribbon connector between the motherboard and the optical sensor.

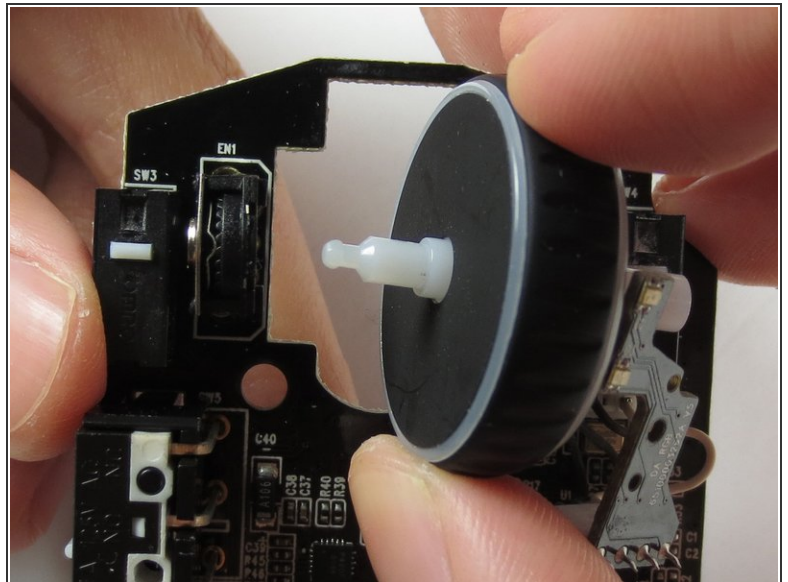
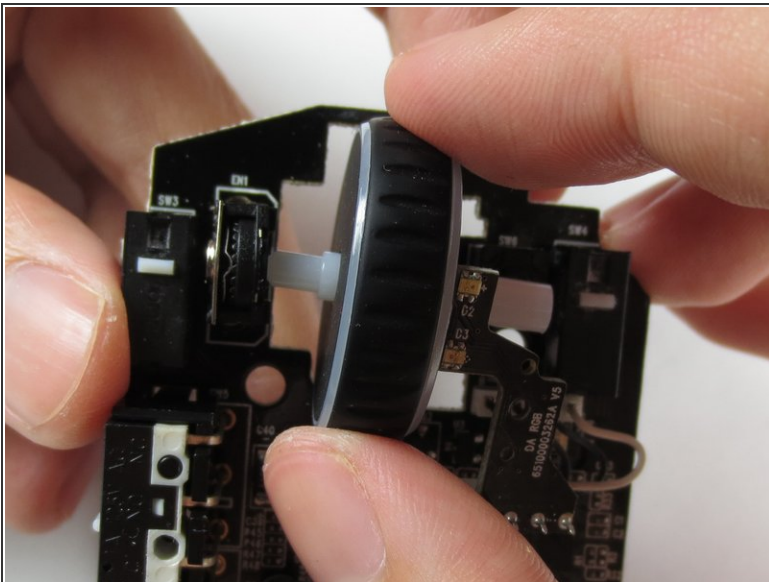


## Step 13



- Remove the motherboard by grasping the sides and gently pulling upward.

## Step 14 — Scroll Wheel



- Remove the scroll wheel from the socket by pulling to the right.

⚠ Pulling too hard could damage the scroll wheel connector.

To reassemble your device, follow these instructions in reverse order.