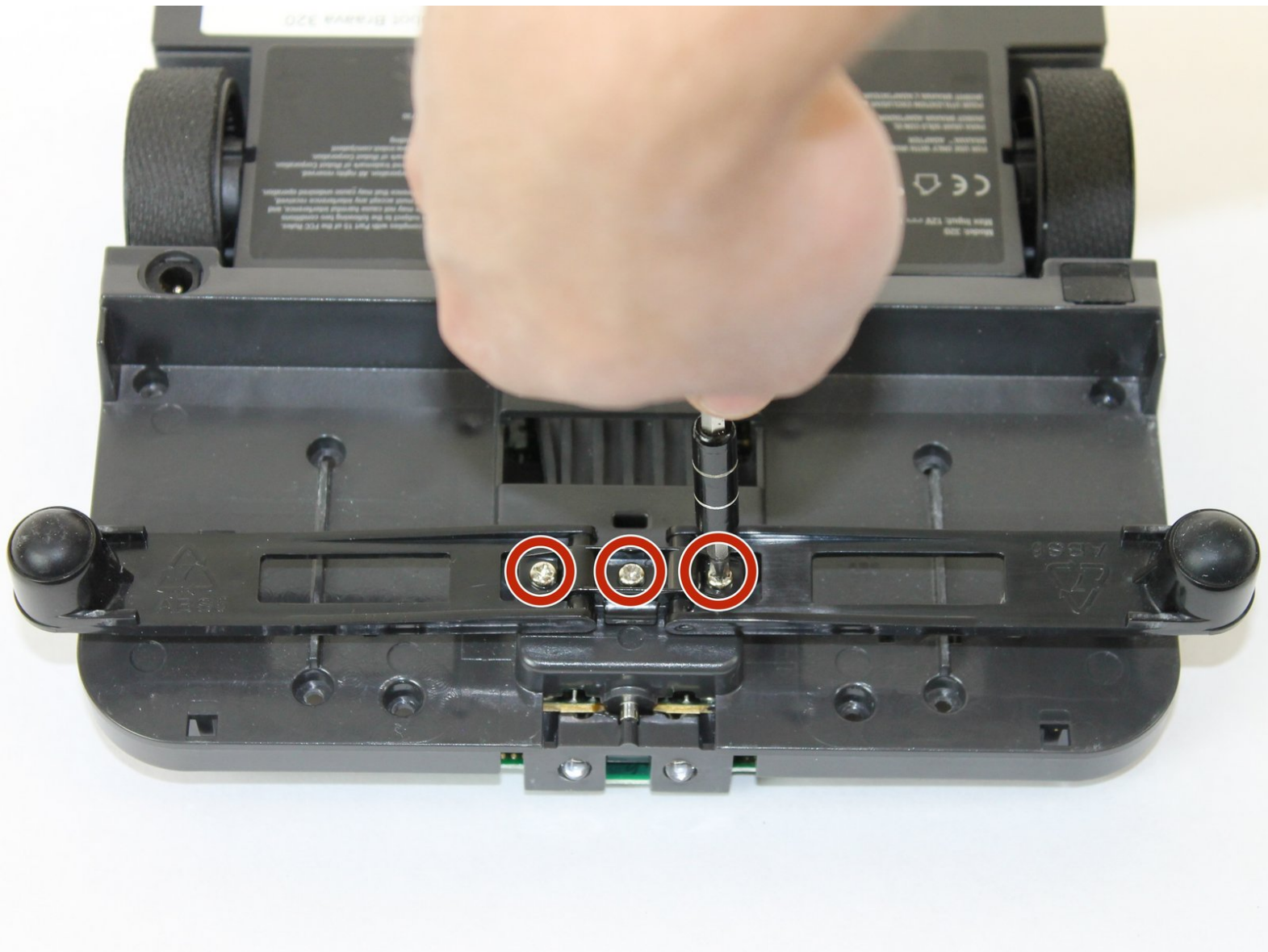




iRobot Braava 320 Deck Plate Arms Replacement

If your iRobot is having trouble holding the cloth, the deck plate arms need to be changed.

Written By: Amroo



INTRODUCTION

The deck plate arms help hold the cloth while the Braava is cleaning. If you have trouble placing the cloth or the rubber feet are missing, the deck plate arms need to be replaced. Here are some steps on how to replace them.



TOOLS:

- [Flathead Screwdriver](#) (1)
 - [Phillips #2 Screwdriver](#) (1)
 - [Phillips #00 Screwdriver](#) (1)
-

Step 1 — Battery



- Flip your device over and locate the battery cover.
- ⓘ The battery cover is located in the center of the device in between both wheels.

Step 2



- Using a Flathead #4 screwdriver, gently turn the 12mm screw that holds the battery cover in.
- ⓘ The screw does not remove, it stays attached to the cover.

Step 3



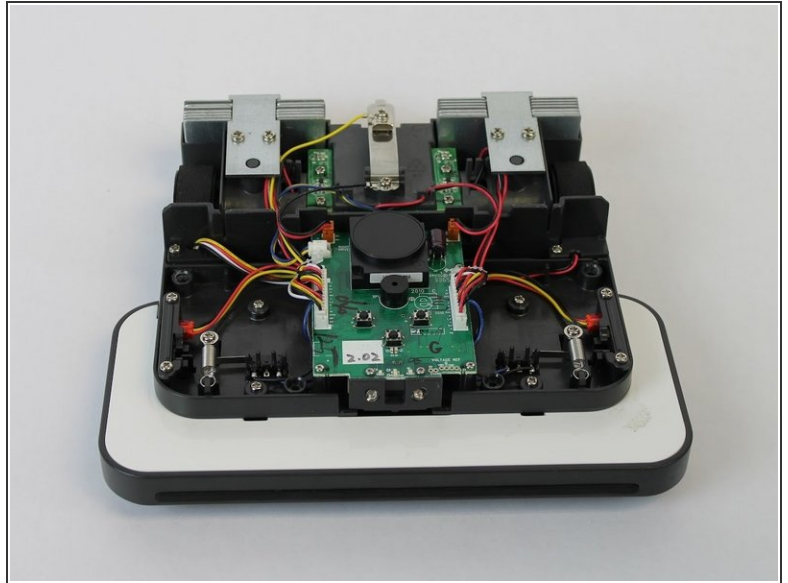
- Gently remove the battery from the tray and disconnect the battery cable.
 - To remove the battery, pull it straight up. To disconnect the cable, gently pull it straight out of the connector.
- ☞ To reinstall the cable, hold it near the end and gently push it in the connector.

Step 4 — Body Shell and Control Panel



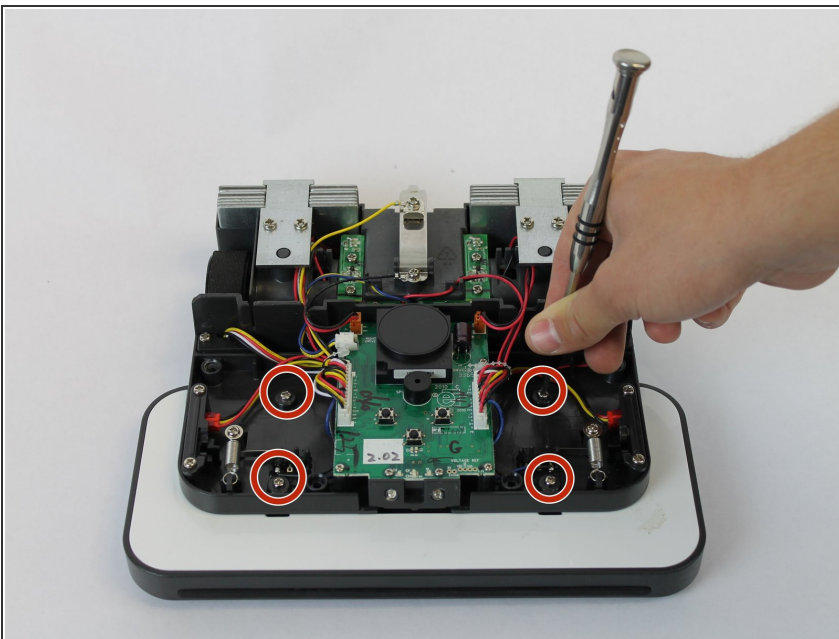
- With the battery removed, rotate your device so the front of it is facing you.
- Remove the four 10mm Phillips #2 screws that attach the shell.

Step 5



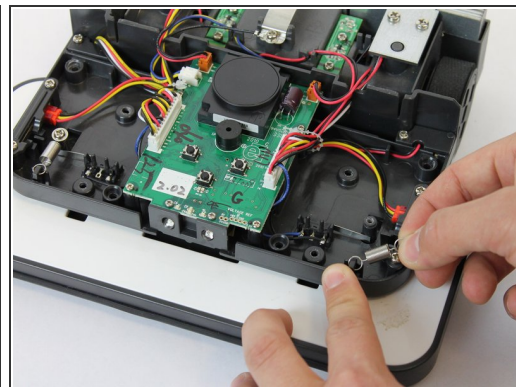
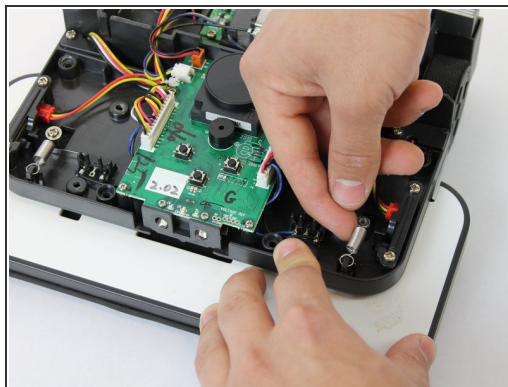
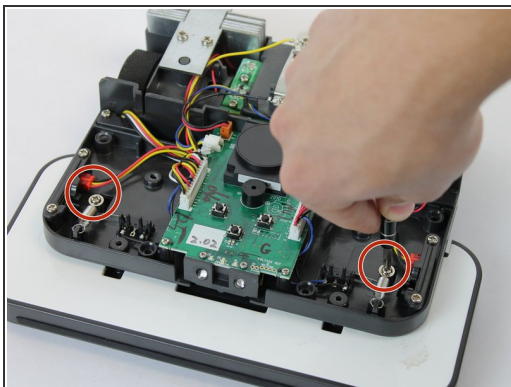
- Using both hands, hold the device together while you flip it over.
- Starting from the front, gently lift up the shell and slowly tilt back until it is fully removed.

Step 6 — Deck Plate Assembly



- With the shell off, flip the iRobot over and remove the four 10mm Phillips #0 screws holding the deck plate assembly on.

Step 7



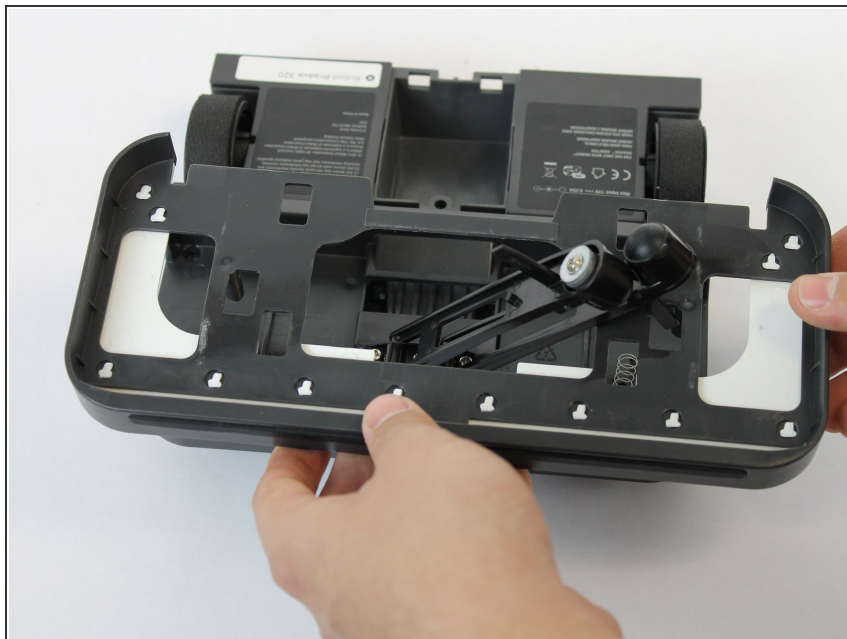
- Remove the two 12mm Phillips #0 screws that hold the two springs onto the deck plate assembly.
- Remove the two springs by gently lifting them up.

Step 8



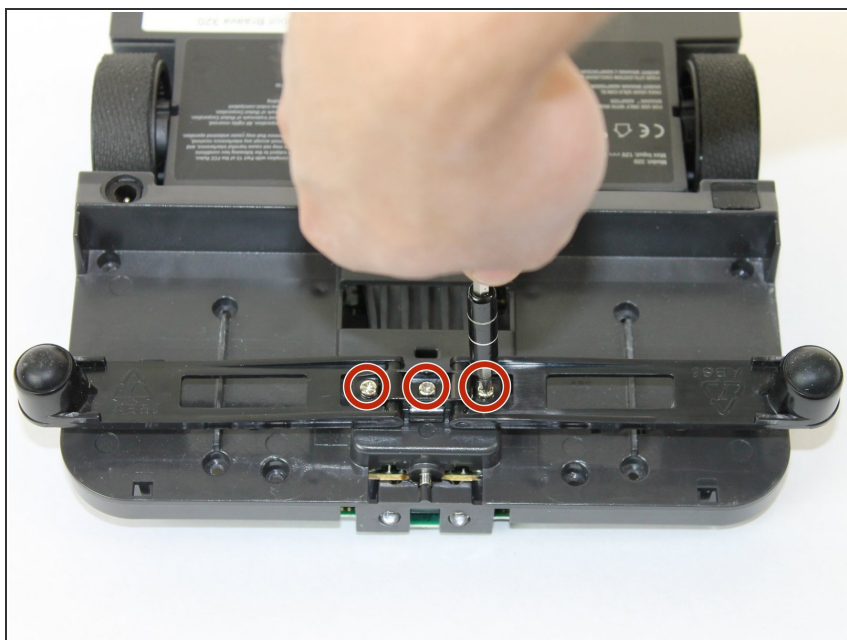
- Flip the device over and remove the deck plate assembly cover by lifting it up.

Step 9



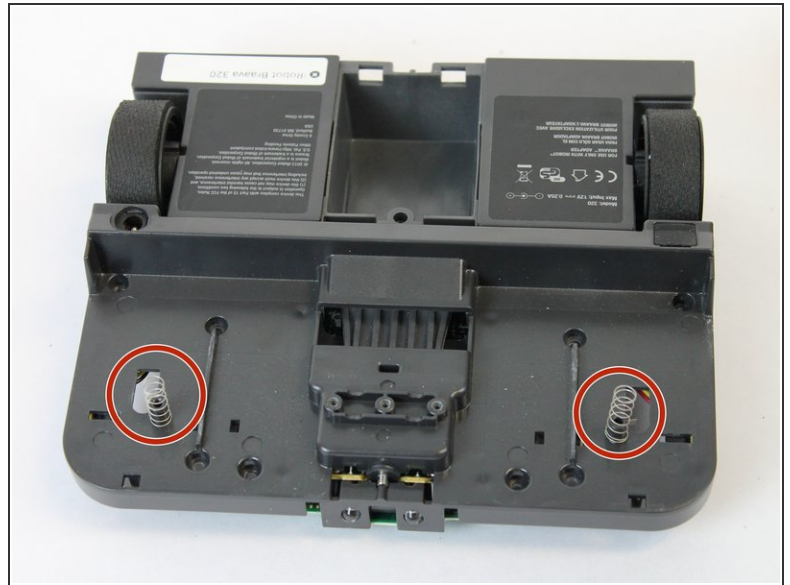
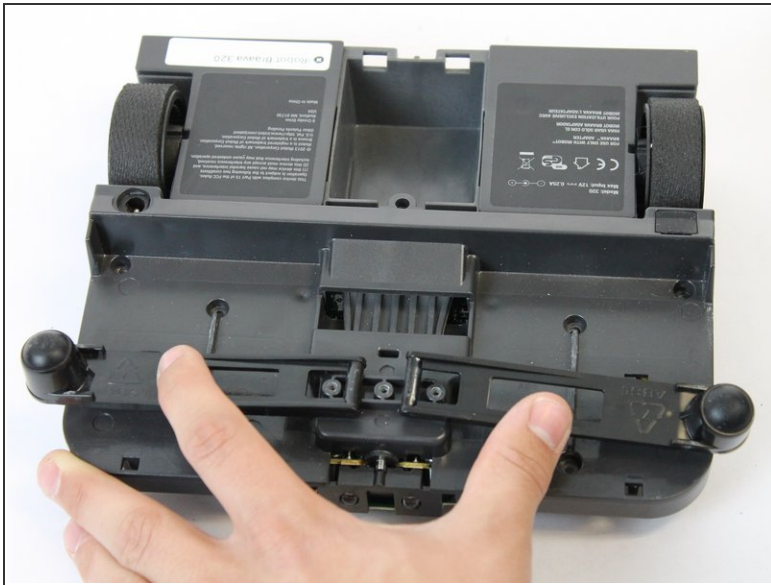
- Pull the arms together by lifting them up and to the center.
- With the arms together, slide the deck plate up and over the arms until it is fully removed.

Step 10 — Deck Plate Arms



- With the deck plate off, remove the three 10mm Phillips #2 screw

Step 11



- Be careful when removing the arms, do not lose the springs located under the arms.

To reassemble your device, follow these instructions in reverse order.