



Panasonic ARC ES-LT3N Power Button Replacement

Replace your power button and bring back efficient performance to your Panasonic ARC ES-LT3N

Written By: Andrew Trainor



INTRODUCTION

This repair guide will show you the best step by step procedure of how to replace your power button in your Panasonic ARC ES-LT3N. The process is fairly easy and you only need a one tool!



TOOLS:

- [Phillips #00 Screwdriver](#) (1)
-

Step 1 — Back Casing



- Flip the razor over so the back is facing you.

Step 2



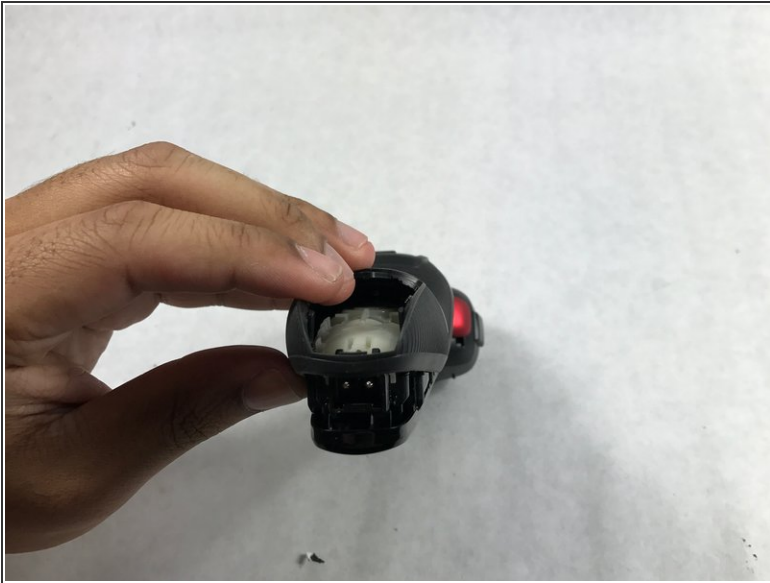
- Using a Phillips #00 screwdriver, remove the 6 mm screw just above the charger port.

Step 3



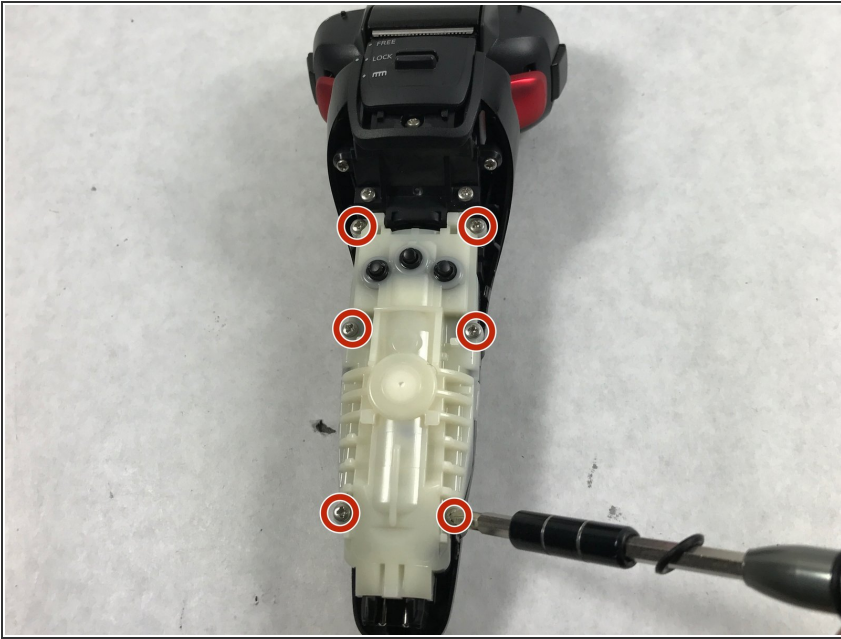
- Slide the plastic cover at the bottom of the razor downward to remove.

Step 4



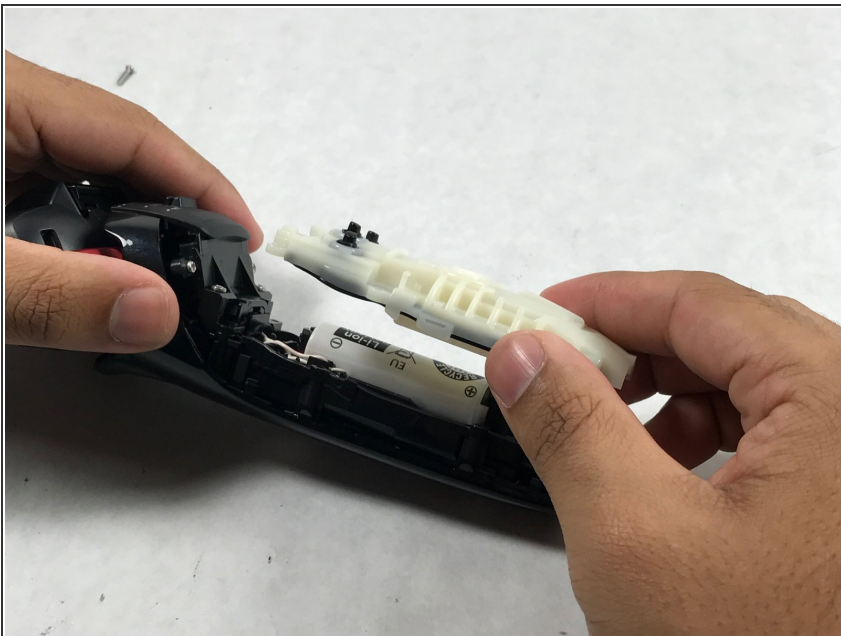
- Lift up the rear casing from the bottom of the razor.
 - ⓘ This may require you to gently pry it apart with you fingers.
 - Lift up the rear casing from the sides of the razor.
 - Pull rear casing up and off razor.
- ⚠ Be careful not to break any plastic!

Step 5 — Battery



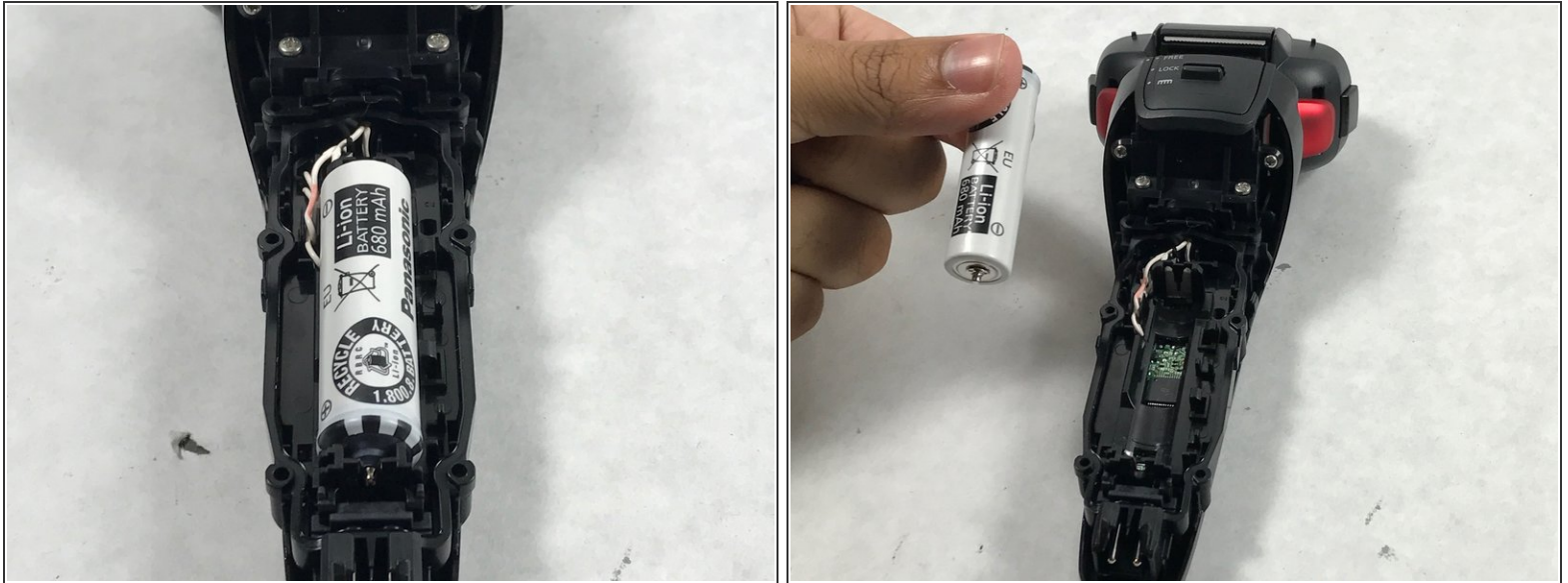
- Using the Phillips 00 driver bit, remove six screws (12mm) from the battery case.

Step 6



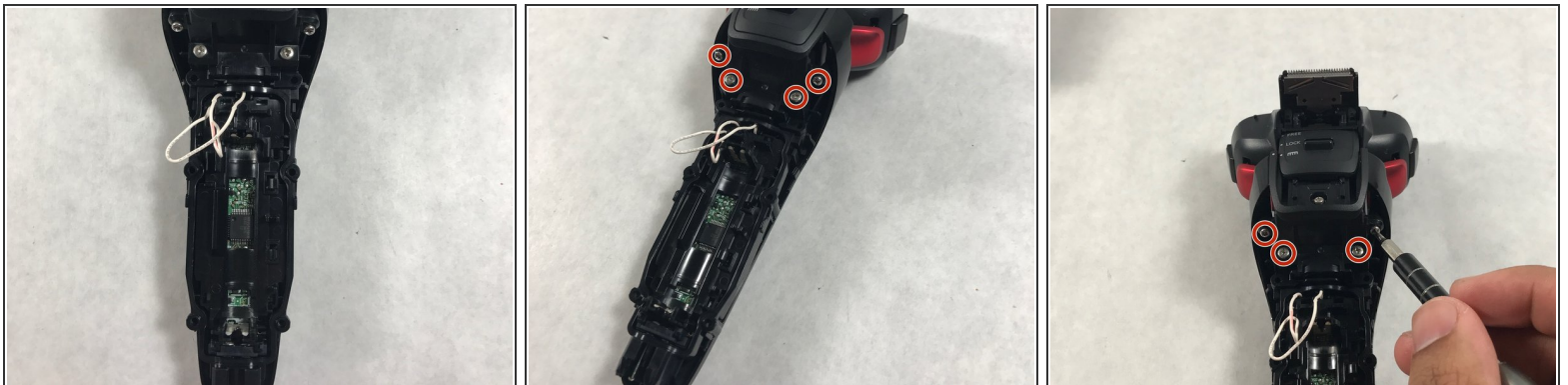
- Remove battery case.

Step 7



- Remove old battery by lifting the battery up and left.
- ⓘ There are plastic brackets holding the battery on the right. Removing up and left ensures that the brackets will not be damaged and the battery will not come loose.

Step 8 — Power Button



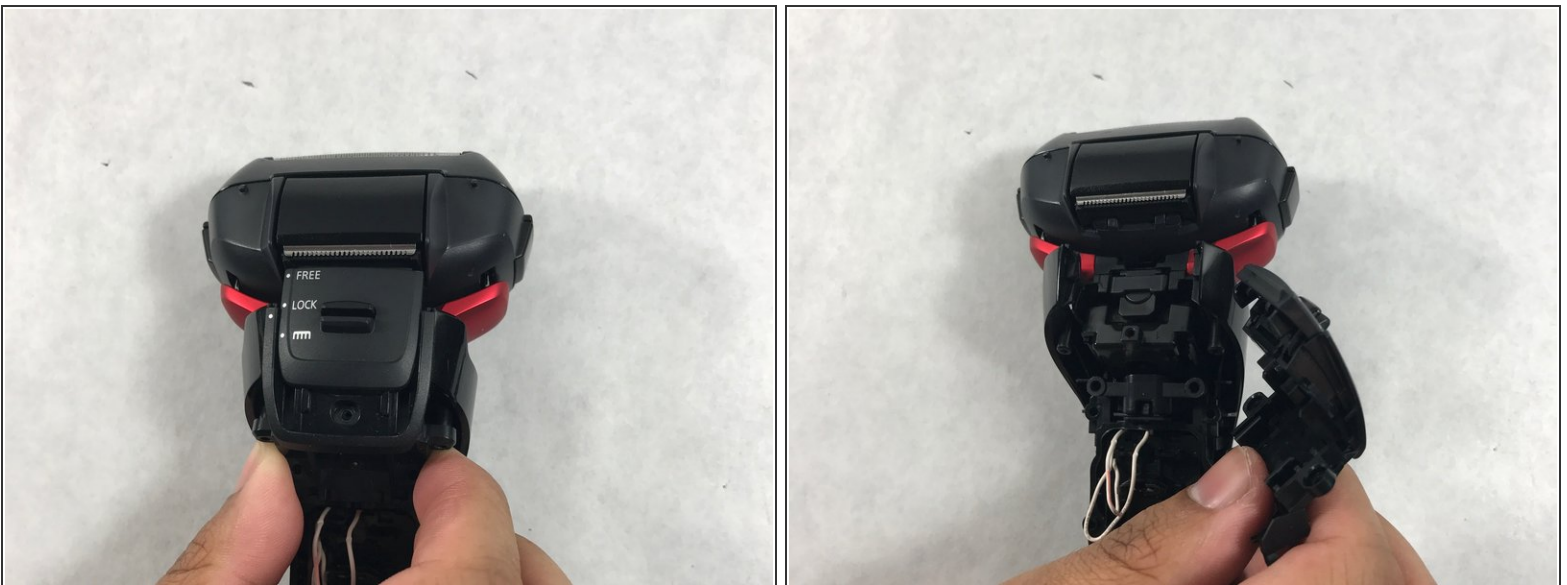
- Remove the 8 mm screws directly below the lock switch.

Step 9



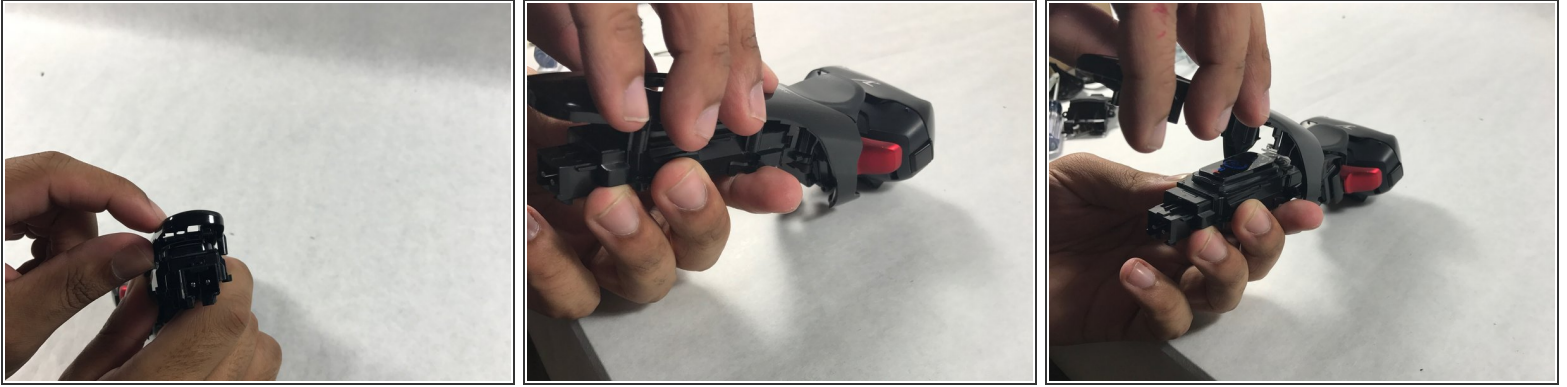
- Push the lock switch upward and remove the 6 mm screw hidden beneath.

Step 10



- Remove the lock switch by sliding it downward until it is out of place.

Step 11



- Starting from the bottom, lift the front casing upward to separate the case from the device.
- Continue to lift the device upward until you can pull the casing off.
- ⓘ It may take some wiggling or slight bending of the plastic to remove all the way.

Step 12



- Remove the button.

To reassemble your device, follow these instructions in reverse order.