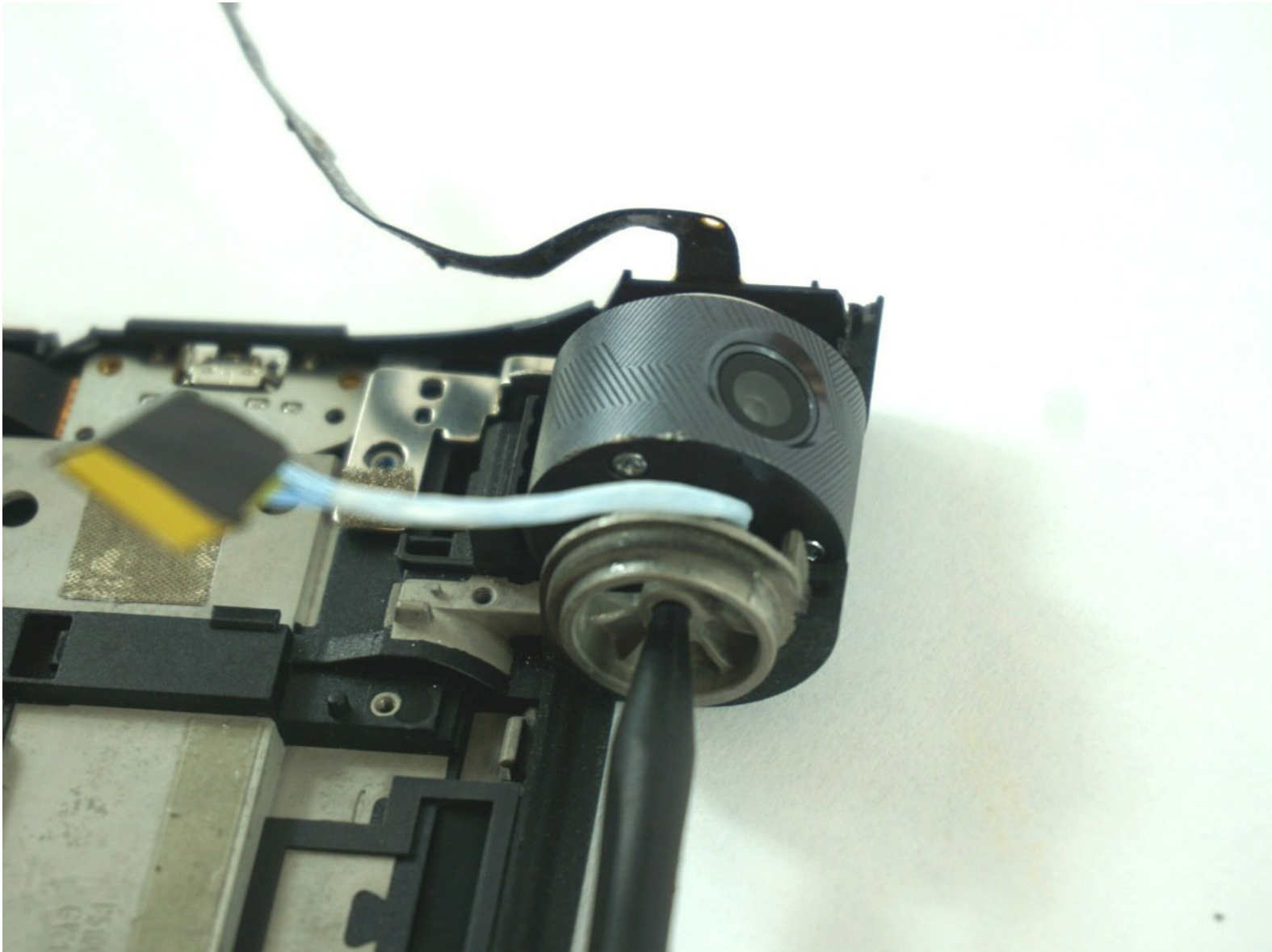




Lenovo Yoga Tab 3 10 Camera Replacement

Written By: Phanudej



 **TOOLS:**

- [Heavy-Duty Spudger](#) (1)
 - [Tweezers](#) (1)
-

Step 1 — Back Cover



- Open the built-in kickstand.

Step 2



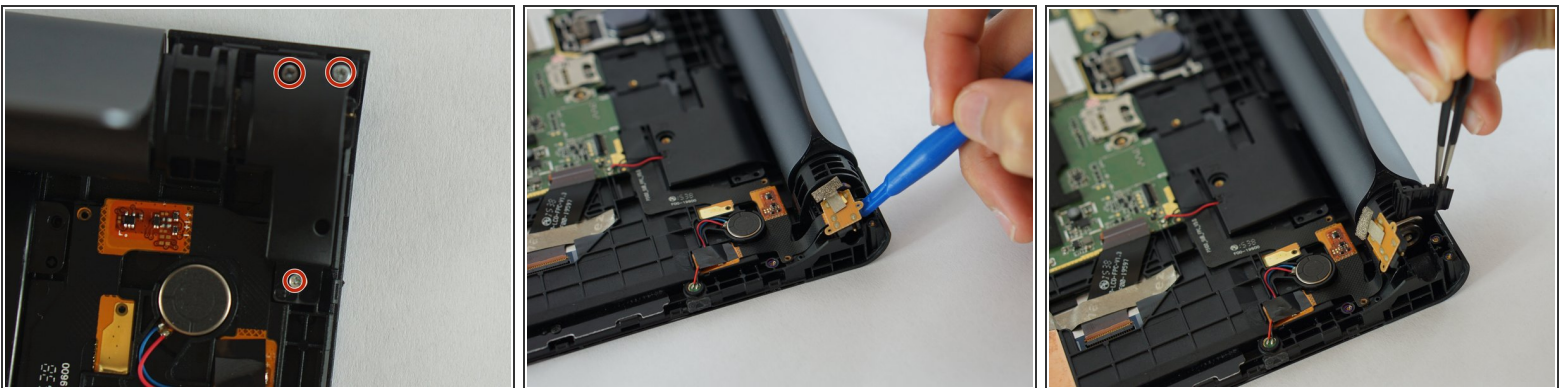
- Remove the sticker located directly under the the built-in kickstand to reveal two 0.75 mm screws.
- Remove the microSD card slot cover. Remove any microSD card (if inserted).
- Using a Phillips head screwdriver, remove the three 0.75 mm screws.

Step 3



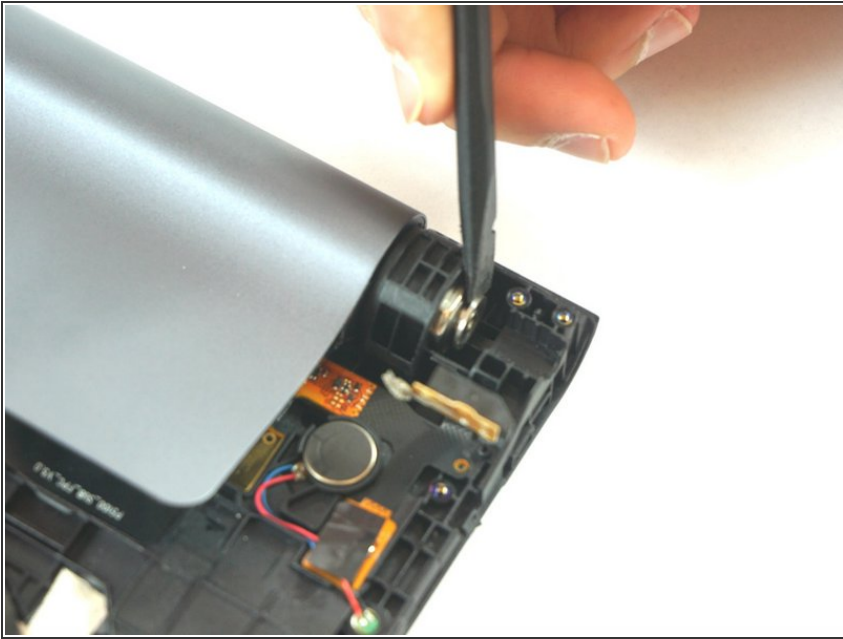
- Orient the device so the screen is facing you.
- Carefully insert the spudger along the seam between the screen and back cover and gently separate the back cover from the device frame.
- Continue to detach the backplate from the frame by moving the spudger around the perimeter.
- ⓘ Some force will be required to detach the small plastic braces securing the backplate to the device.

Step 4 — Camera



- Remove the 3 screws from the auxiliary port cover.
- Use the spudger to gently push the auxiliary module out of the way.
- Remove the detachable plastic latch located in front of the hinge.

Step 5



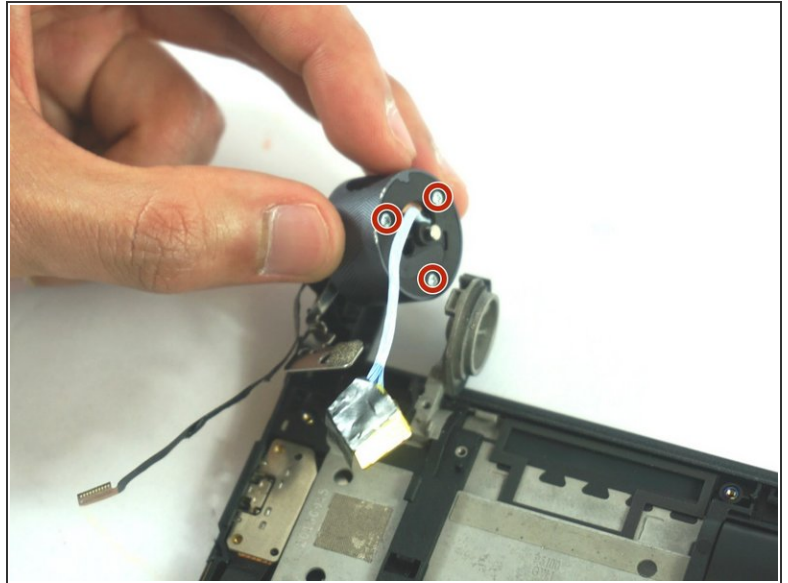
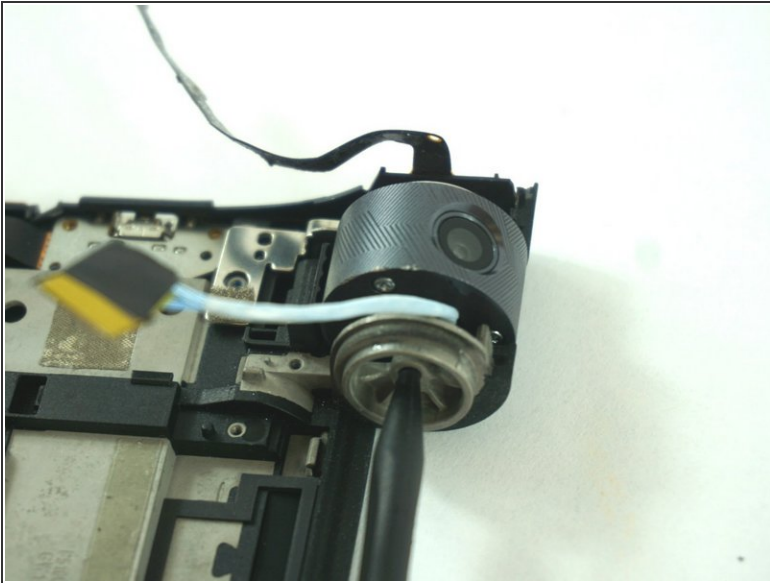
- Use a spudger to gently remove the hinge.

Step 6



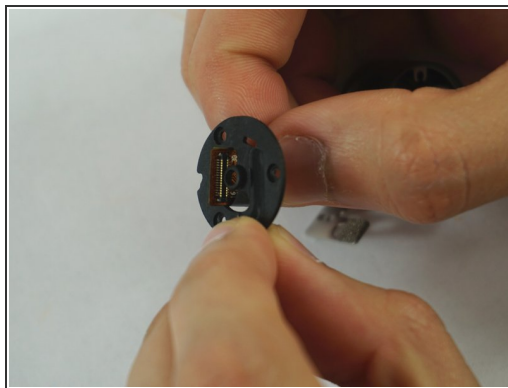
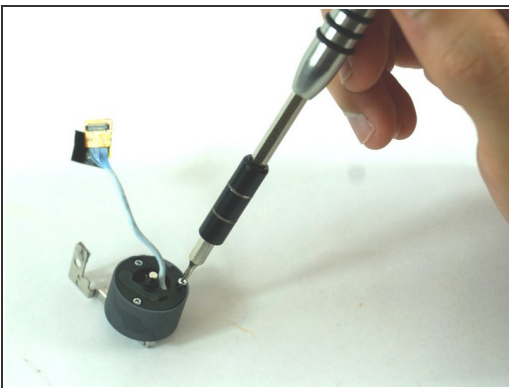
- Carefully lift the kickstand away from the frame.
- ⓘ The battery is located inside of the kickstand. Ensure proper handling and care.

Step 7



- Use the pointed end of a spudger to push in the camera's locking mechanism.
- Upon releasing the camera lock lift the camera out and locate the three screws.

Step 8



- Use a J000 Philips screwdriver to remove the three screws.
- Remove the camera cover that seals the camera case.
- Remove the camera from the shell.

Step 9



- Separate the camera from its casing.

To reassemble your device, follow these instructions in reverse order.