



Lenovo Yoga Tab 3 10 LCD Replacement

Before you start get a correct replacement...

Written By: Phanudej



INTRODUCTION

Before you start get a correct replacement screen. Find the exact model name of your tablet. You can find it in "About the tablet", at the bottom of the Android settings app. Search online for the part and buy from a reputable seller.

TOOLS:

[Tweezers](#) (1)

[iFixit Opening Tool](#) (1)

[iOpener](#) (1)

[Phillips #000 Screwdriver](#) (1)

Step 1 — Back Cover



- Open the built-in kickstand.

Step 2



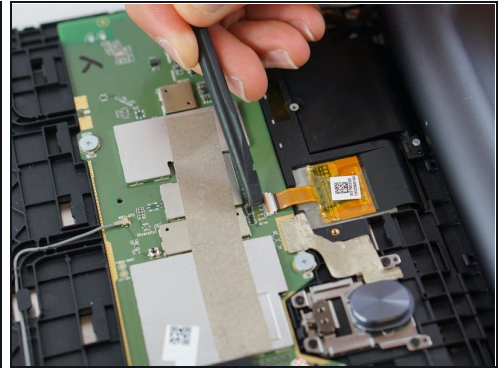
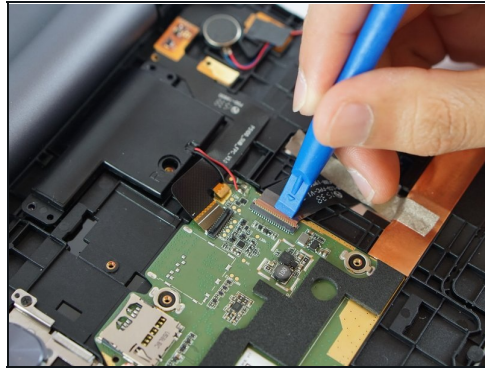
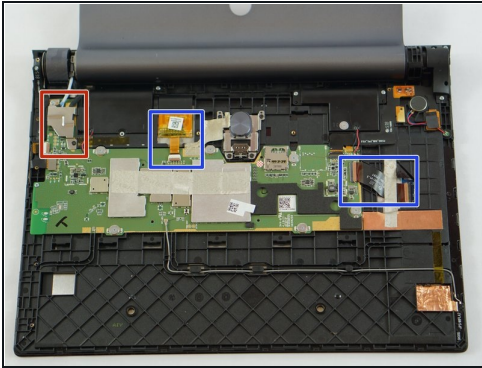
- Remove the sticker located directly under the the built-in kickstand to reveal two 0.75 mm screws.
- Remove the microSD card slot cover. Remove any microSD card (if inserted).
- Using a Phillips head screwdriver, remove the three 0.75 mm screws.

Step 3



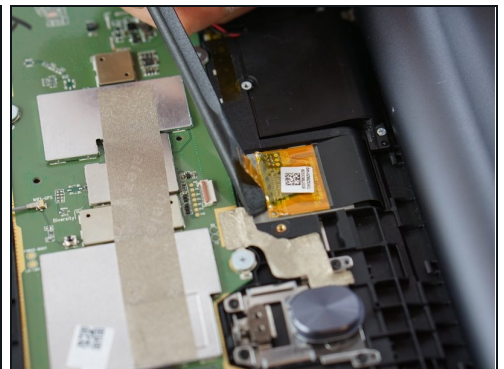
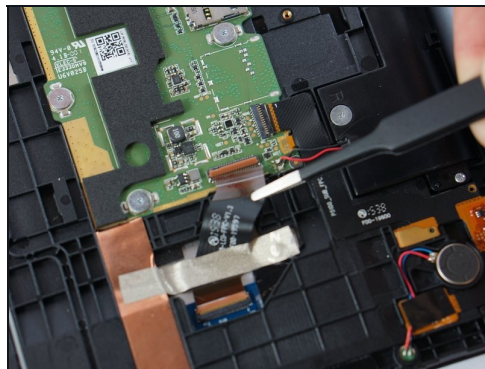
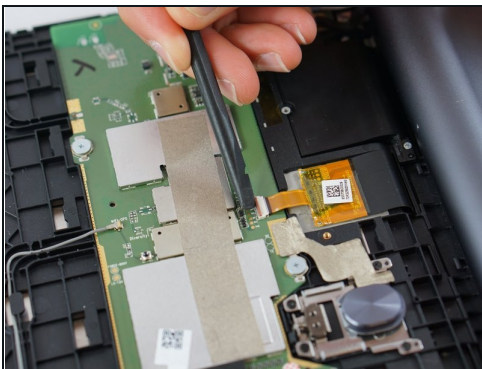
- Orient the device so the screen is facing you.
 - Carefully insert the spudger along the seam between the screen and back cover and gently separate the back cover from the device frame.
 - Continue to detach the backplate from the frame by moving the spudger around the perimeter.
- ⓘ Some force will be required to detach the small plastic braces securing the backplate to the device.

Step 4 — LCD



- Before detaching the LCD and digitiser connectors, remove the two small screws at the top left (red bordered area in photo). Remove the metal shield and disconnect the battery wire.

Step 5



- With [tweezers](#), lift the locking flaps and detach the connected ribbon cables for both the LCD and digitizer (blue bordered areas in previous step photo)
- Using a spudger lift the gold- colored base up away from the adhesive.
- ① This particularly ribbon connection will likely be difficult to detach from the casing. Proceed with patience and caution during removal process.
- ① Check your replacement LCD to see if it includes a new ribbon cable (black one in second photo). If not, you'll need to peel up the tape securing it, and disconnect it at the LCD end instead of the motherboard end.

Step 6



- Using the iOpener place it along the edges of the device to weaken the adhesive.

i The applied heat is strictly to loosen the adhesive portion around the perimeter and should not come in contact with the LCD.

⚠ Wear safety glasses to protect your eyes, and be careful not to damage the LCD screen.

Step 7



- Using the plastic opening tools separate the screen from the device.

⚠ Proceed with patience. Applying too much pressure and force here can result in damage to the delicate glass panel or underlying LCD.

Step 8



- Lift the screen gently from the device.
- Make sure the cable ribbon is pulled through safely.
- ① Some adhesive may still be connected so be patient when removing the screen.

To reassemble your device, follow these instructions in reverse order.