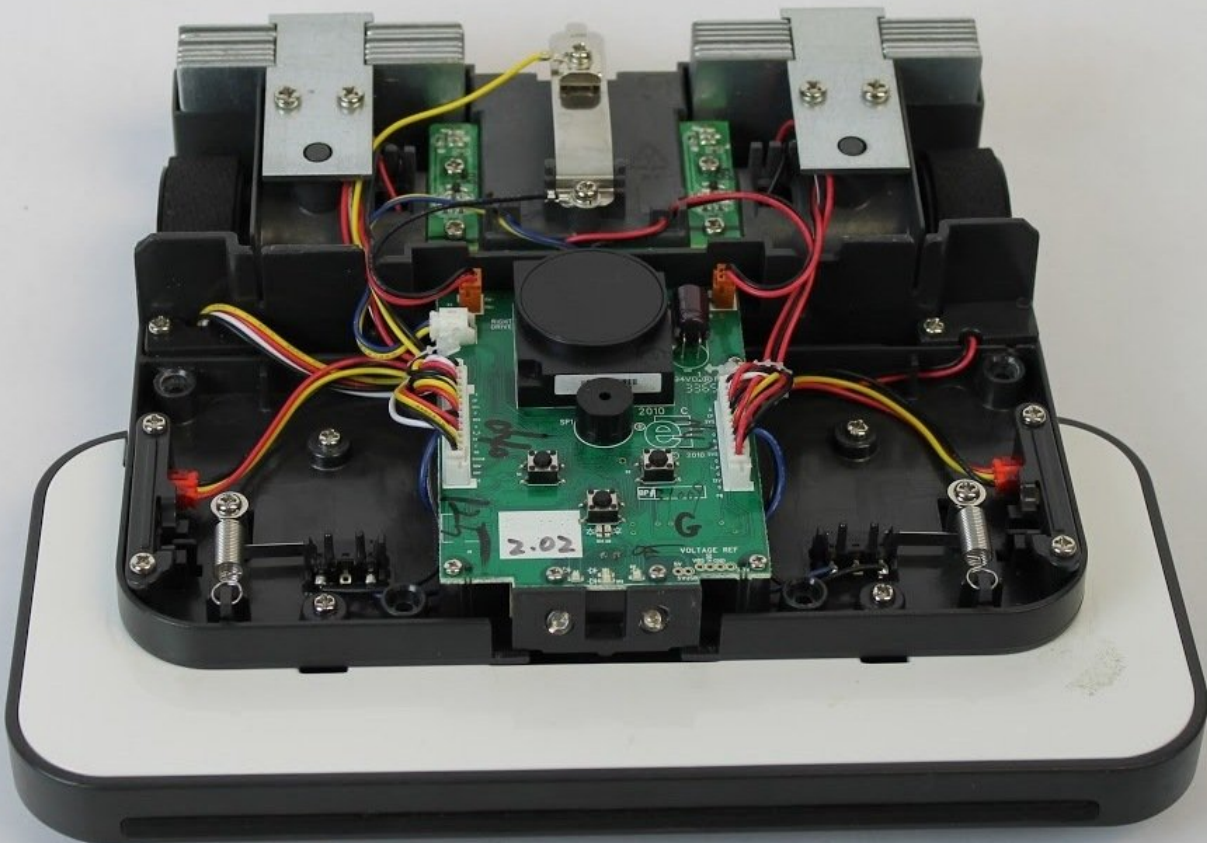




# iRobot Braava 320 Body Shell Replacement

Replace your cracked or broken body shell and control panel to restore the aesthetics of your robot.

Written By: Adam Lewis



## INTRODUCTION

Although a cracked or broken body shell may not hinder the performance of your Braava, replacing it will help restore the cosmetic beauty of your device. It is a simple and straight forward replacement, requiring only four exposed screws to be removed.

---

### TOOLS:

- [Phillips #2 Screwdriver](#) (1)
  - [Flathead Screwdriver](#) (1)
-

## Step 1 — Battery



- Flip your device over and locate the battery cover.
- ⓘ The battery cover is located in the center of the device in between both wheels.

## Step 2



- Using a Flathead #4 screwdriver, gently turn the 12mm screw that holds the battery cover in.
- ⓘ The screw does not remove, it stays attached to the cover.

## Step 3



- Gently remove the battery from the tray and disconnect the battery cable.
  - To remove the battery, pull it straight up. To disconnect the cable, gently pull it straight out of the connector.
- ☑ To reinstall the cable, hold it near the end and gently push it in the connector.

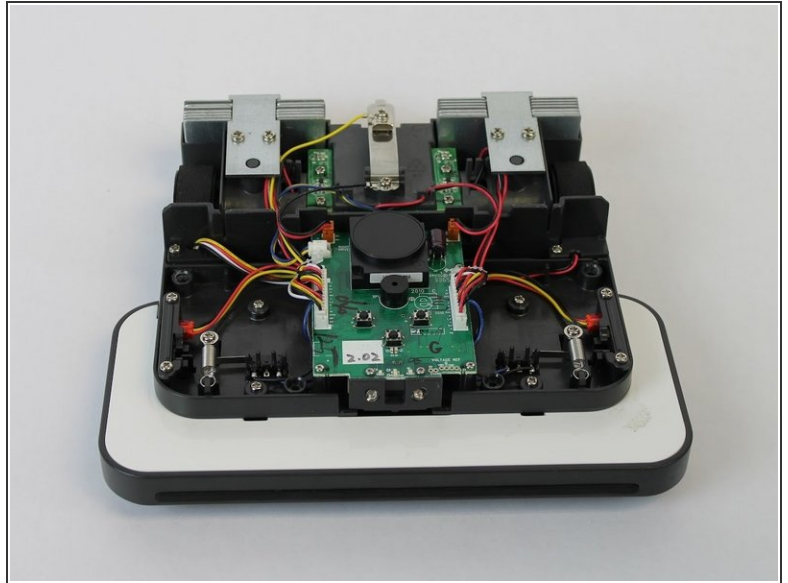
## Step 4 — Body Shell and Control Panel



- With the battery removed, rotate your device so the front of it is facing you.
- Remove the four 10mm Phillips #2 screws that attach the shell.



## Step 5



- Using both hands, hold the device together while you flip it over.
- Starting from the front, gently lift up the shell and slowly tilt back until it is fully removed.

To reassemble your device, follow these instructions in reverse order.