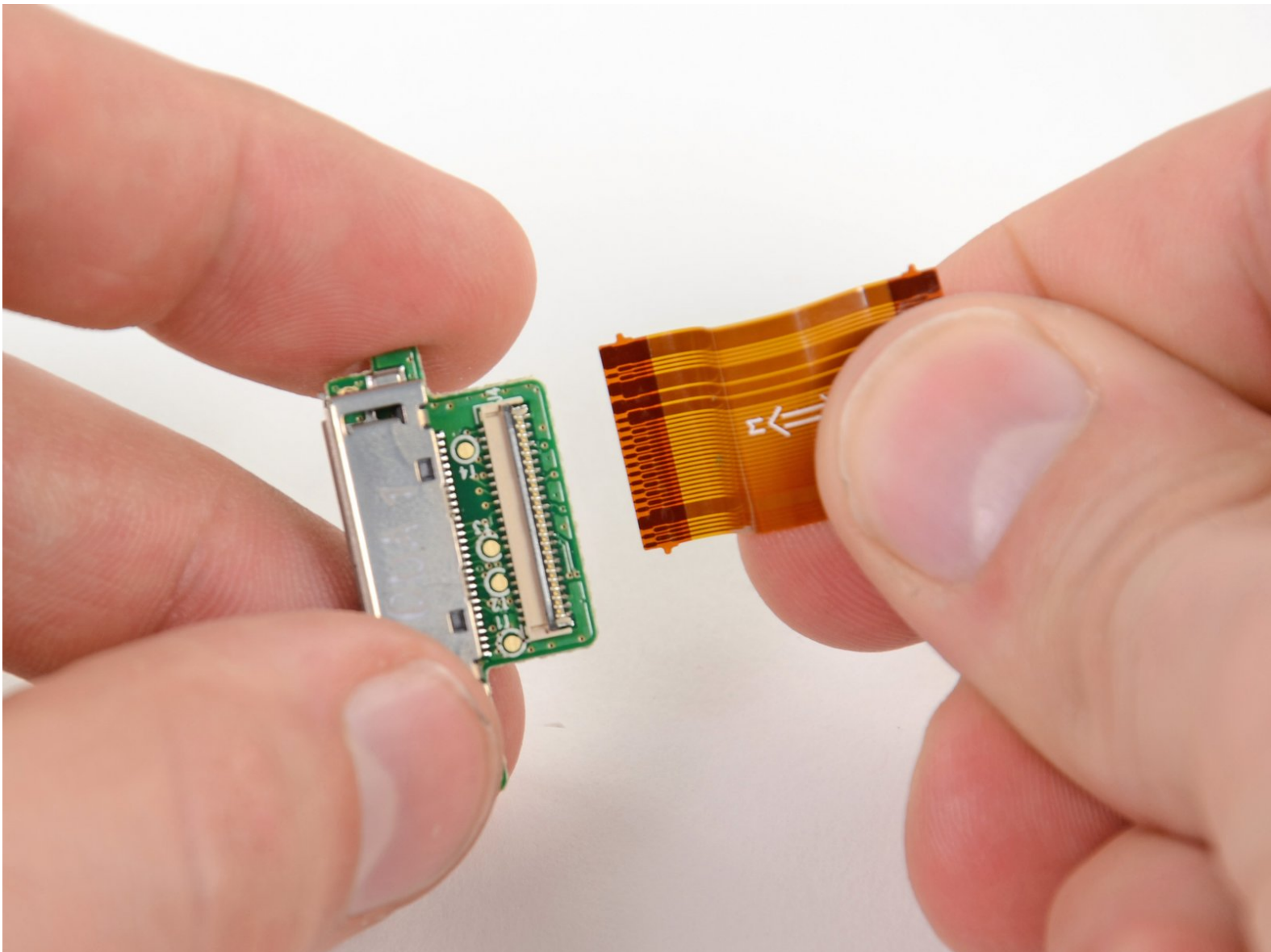




# GoPro HD Hero2 SD Board

GoPro HD Hero2 SD board replacement.

Written By: David Hodson



# INTRODUCTION

Dude 1: Dude! Check out this sweet video I just made of me mountain biking through an alligator-filled swamp! Here, take my SD card.

Dude 2: Dude, there's nothing here. It's just an empty 32 GB SD card. I should've known that you weren't hardcore.

Dude 1: No dude, I swear it happened! My SD card reader must be dead.

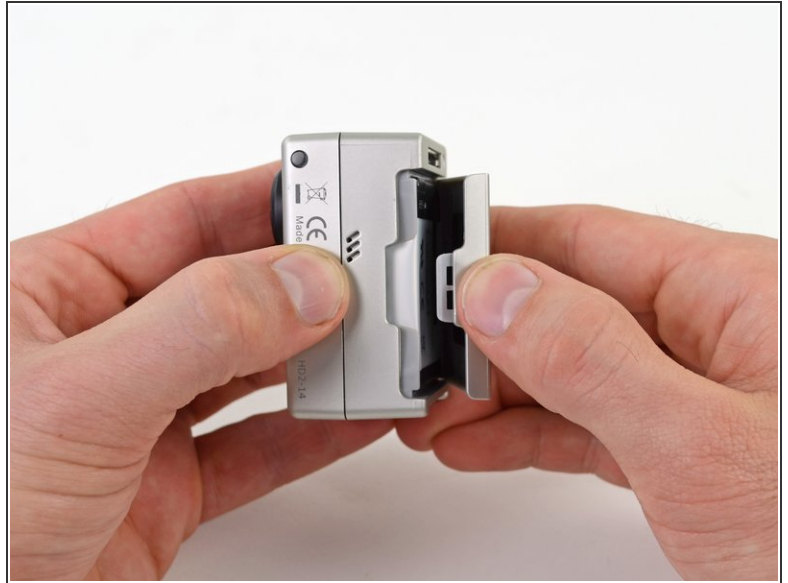
Don't be like Dude 1. Make sure your precious memories are recorded to your SD card and replace a faulty SD board in your GoPro.



## TOOLS:

- [Tweezers](#) (1)
  - [iFixit Opening Tools](#) (1)
  - [Spudger](#) (1)
  - [Phillips #00 Screwdriver](#) (1)
-

## Step 1 — Back Cover



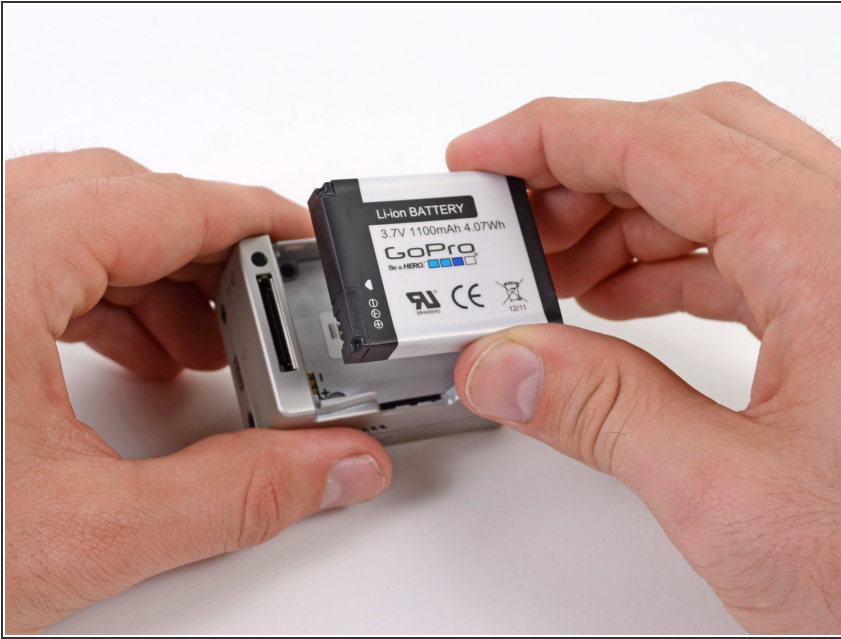
- Place your thumb on the indentation in the back case on the side of the GoPro.
- Gently press down with your thumb and lift the back cover away from the case to remove it.

## Step 2 — Battery



- Slide a plastic opening tool between the battery and the rear case.
- Gently pry the battery up and out of the rear case.

## Step 3



- Remove the battery from the case.

## Step 4 — Rear Case



- Remove the four Phillips #00 screws securing the rear case to the rest of the device:
  - Two 5.5 mm coarse thread screws.
  - Two 4.4 mm fine thread screws.

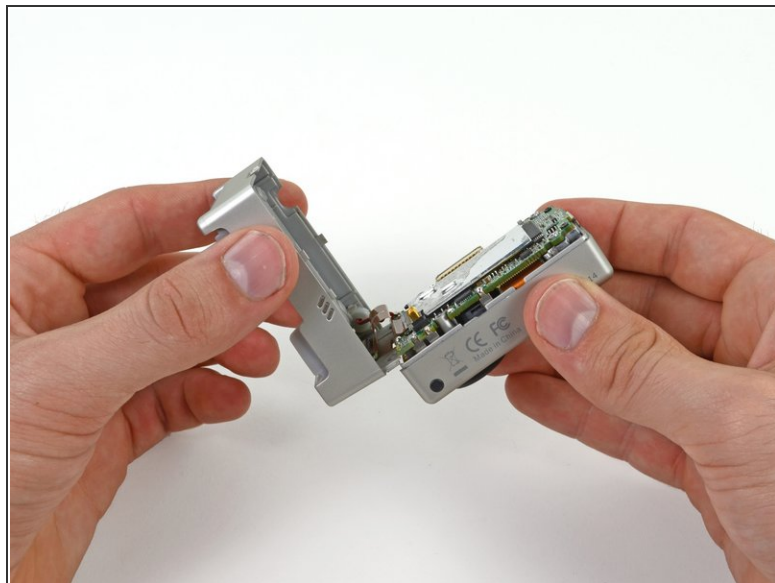


## Step 5




- Slide the edge of a plastic opening tool underneath the sticker on the rear cover and gently peel the sticker up.
- Once you have enough of the sticker peeled up with the plastic opening tool, grab an edge of it with your fingers and pull it off completely.

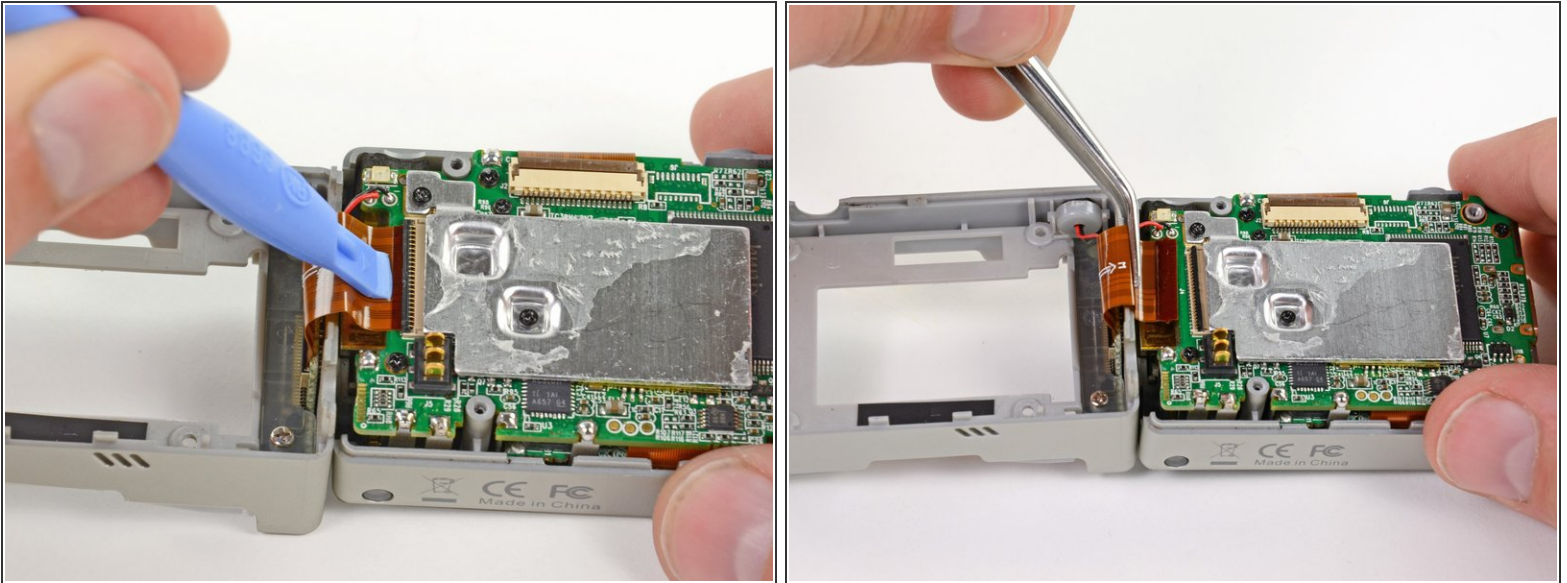
## Step 6




- Grasp the rear case and lift it off of the front case.

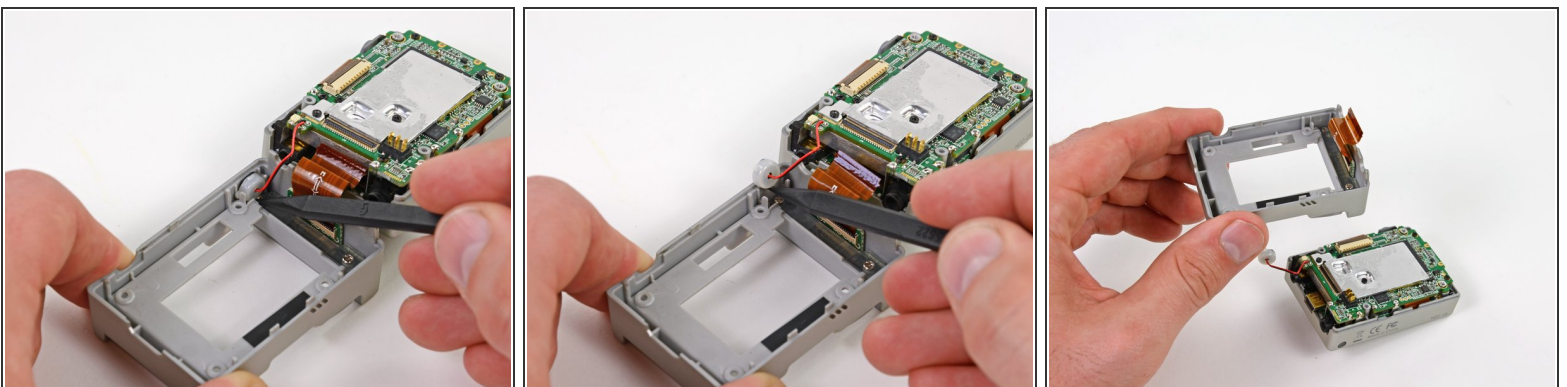
 Do not try to completely remove the rear case yet, as it is still attached by the display port ribbon cable.

## Step 7



- Using a plastic opening tool or your fingernail, flip up the locking tab on the SD board ribbon cable ZIF connector on the motherboard assembly.  
 Be careful that you are prying on the locking tab, and not the connector itself.
- Use a pair of tweezers to remove the SD board ribbon cable from its connector on the motherboard.

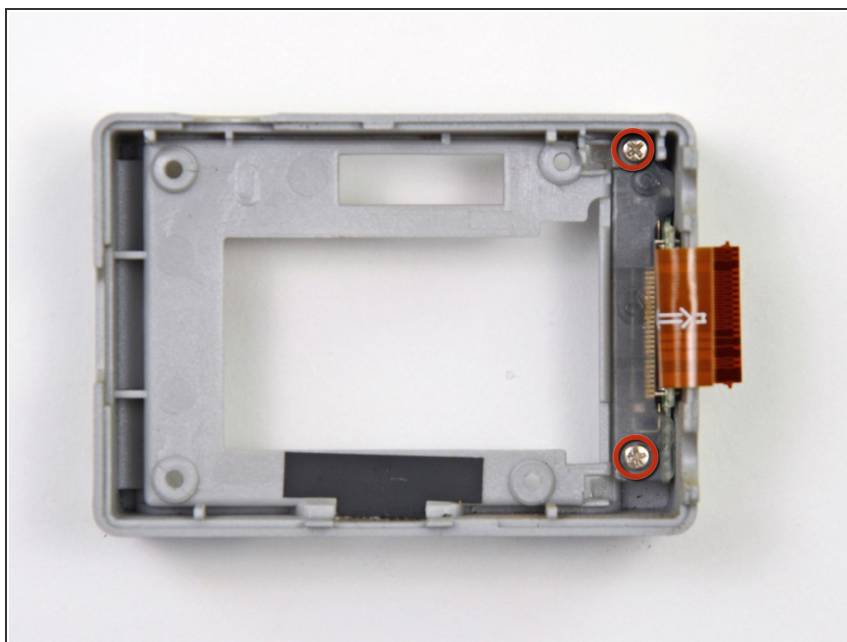
## Step 8



- Lift the speaker out of the rear case with the tip of a spudger.
- Remove the rear case.

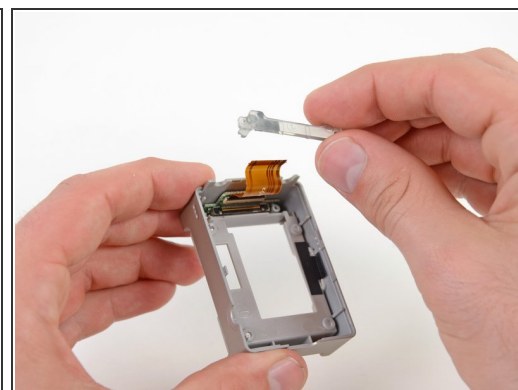
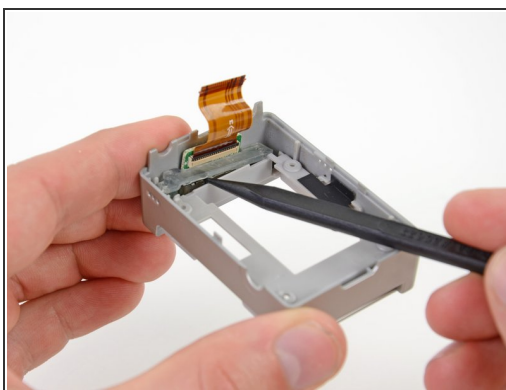
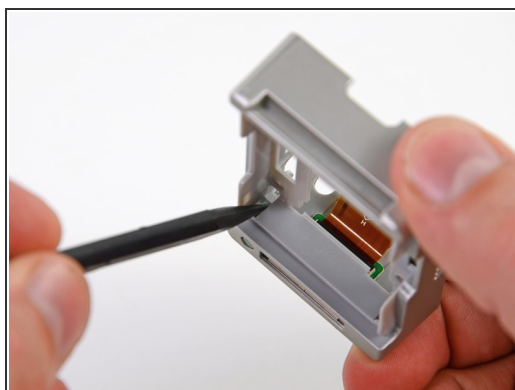


## Step 9 — SD Board



- Remove the two 5.8 mm Phillips #00 screws securing the SD board cover to the rear case.

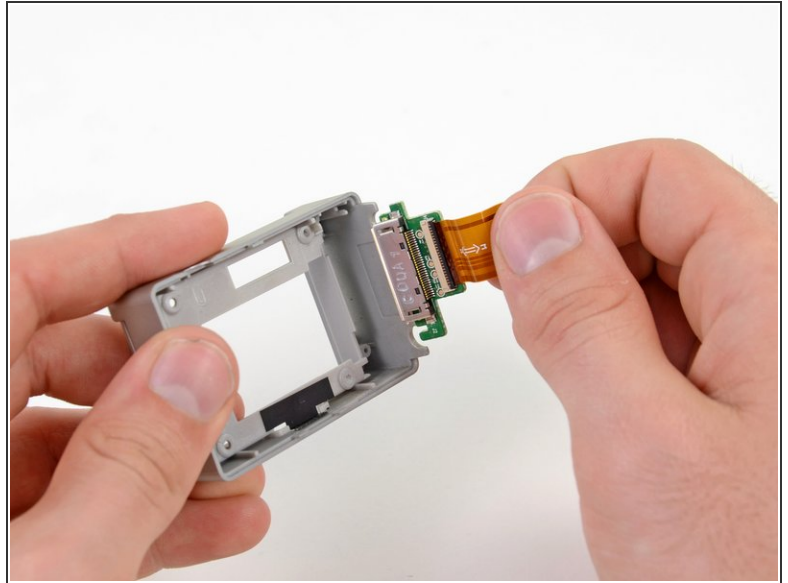
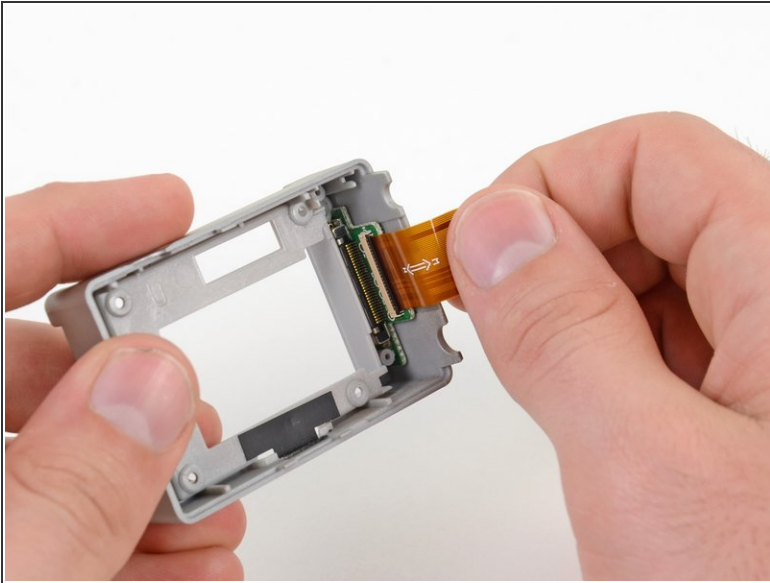
## Step 10



- ⓘ Turn the rear case over so that the SD card slot is facing you.
- Use the tip of a spudger to push the bottom of the SD board cover up and out of the rear case.
  - Turn the rear case back over.
  - Lift the SD board cover out of the rear case with the tip of a spudger and remove it.

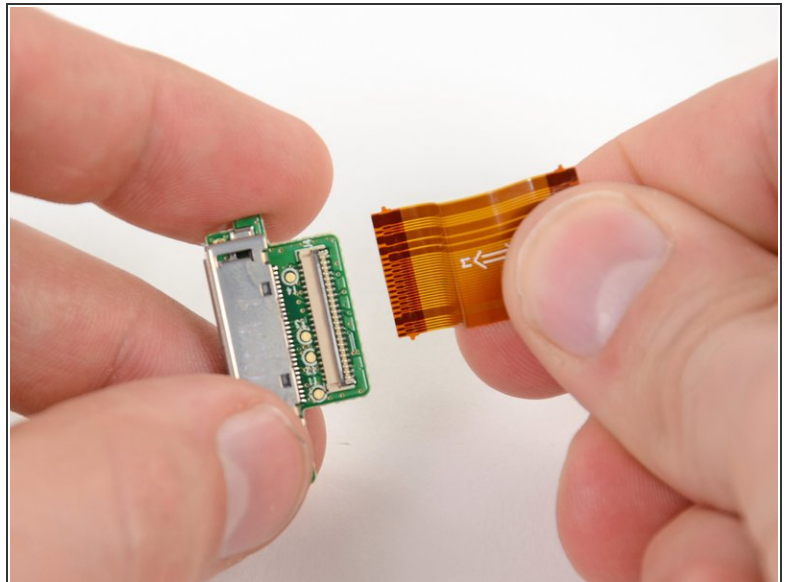
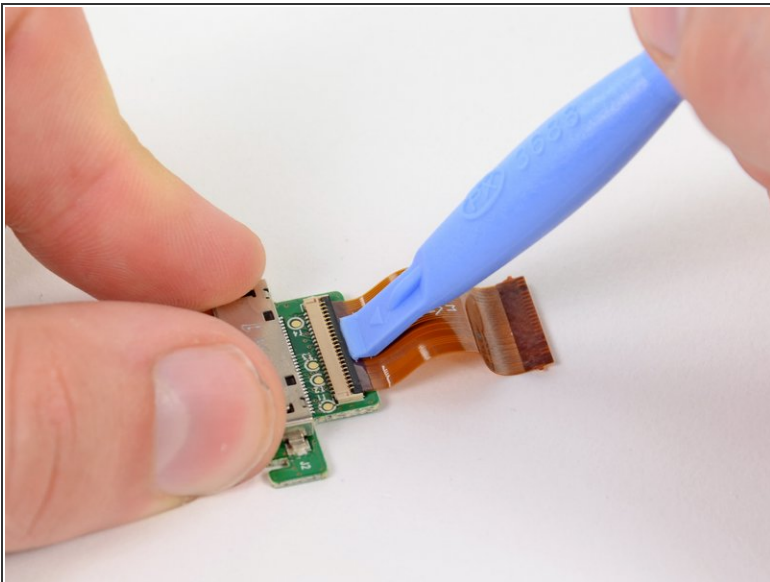


## Step 11



- Grasp the SD board ribbon cable gently and pull the SD board out of the rear case.

## Step 12 — SD Board



- Use a plastic opening tool or your fingernail to flip up the locking tab on the SD board ribbon cable ZIF connector.
  - ⚠ Be careful that you are prying up on the locking tab and **not** the connector itself.
- Remove the SD board ribbon cable.

To reassemble your device, follow these instructions in reverse order.