



# Sony Ericsson W350a Memory Card Replacement

This guide shows how the memory card is installed into the Sony Ericsson w350a phone.

Written By: Parker Stroble



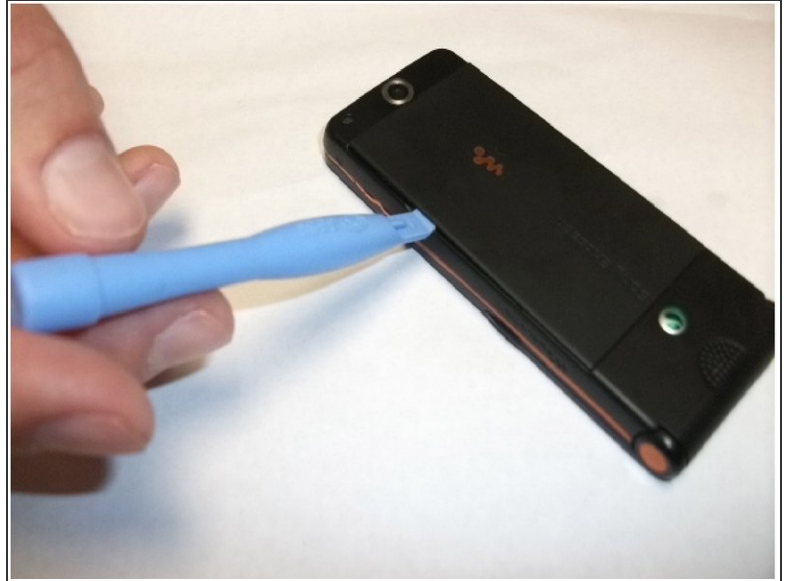
**TOOLS:**

- [iFixit Opening Tools](#) (1)

**PARTS:**

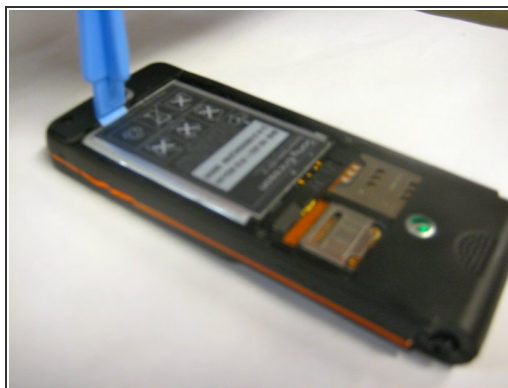
- [Memory Card](#) (1)

## Step 1 — Battery



- Place the phone face down on a flat smooth surface so that the camera, logos, and speaker face up.
- Using the provided notch on the bottom of the back cover, insert a plastic opening tool and lift upwards to remove the back cover of the phone.

## Step 2



- Set the cover to the side upon removal.
- Insert the plastic opening tool into the crevice between the camera and the battery of the phone. Using a gentle prying motion, lift the end of the battery and remove.
- After removal, recycle the defective battery appropriately.

## Step 3 — Memory Card



- After removing the battery, insert the memory card into the lower left slot as designated by the circle in the picture. Be sure to have the contacts aligned into their appropriate slots.

To reassemble your device, follow these instructions in reverse order.