



# Samsung NP-QX411L Hard Drive Replacement

This guide walks through the steps required to replace the hard drive (HDD) on a Samsung NP-QX411L laptop.

Written By: Rebecca Johnson



## INTRODUCTION

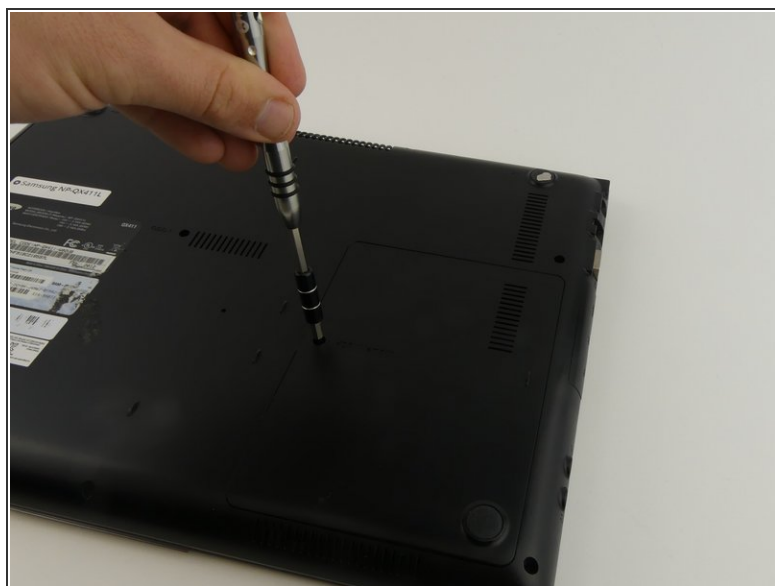
If you want to replace your hard drive for problems such as being unable to access files, this guide walks you through lifting the cover and removing the hard drive. The steps should be easy to follow. Just make sure to wear an anti-static wristband to avoid shocking the motherboard.




### TOOLS:

- [Phillips #000 Screwdriver](#) (1)
  - [Heavy-Duty Spudger](#) (1)
  - [Anti-Static Wrist Strap](#) (1)
-

## Step 1 — Hard Drive



 Put on the anti-static wristband and connect the attached alligator clip to a metal object. This will prevent you from shocking the motherboard.

- Flip the laptop.
- Use the Phillips #000 screwdriver to unscrew the 6 mm screw from the square panel.

## Step 2



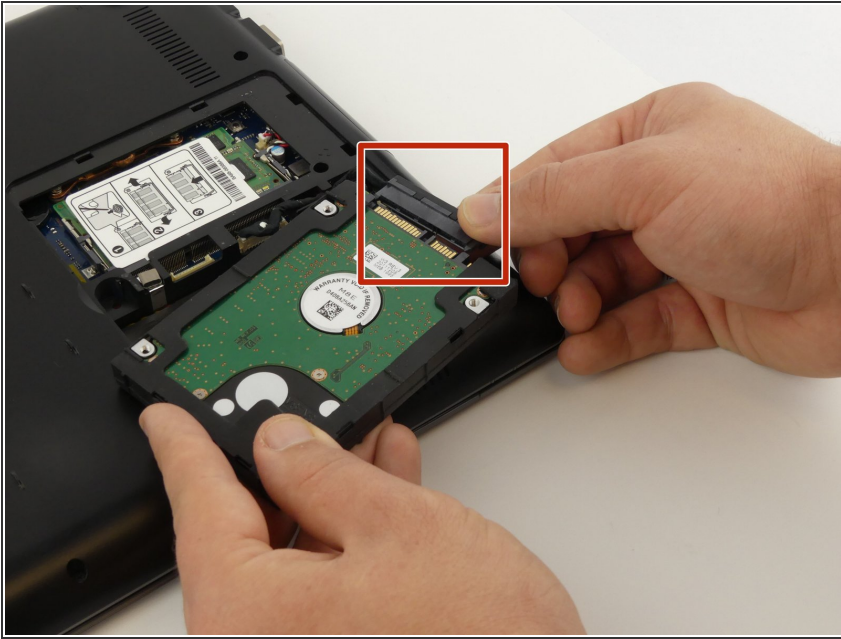
- Gently wedge the spudger under the square panel.
- Run the spudger under the edges of the square panel to loosen it.
- Remove the panel.

## Step 3



- ⚠ Remove the hard drive slowly because it is still connected to a wire.
- Pull up on the rubber flap or use the spudger to lift the hard drive.

## Step 4



- Remove the hard drive by gently pulling the power connector at the base of the wire off. You can do this by pulling the connector away from the hard drive.

To reassemble your device, follow these instructions in reverse order.