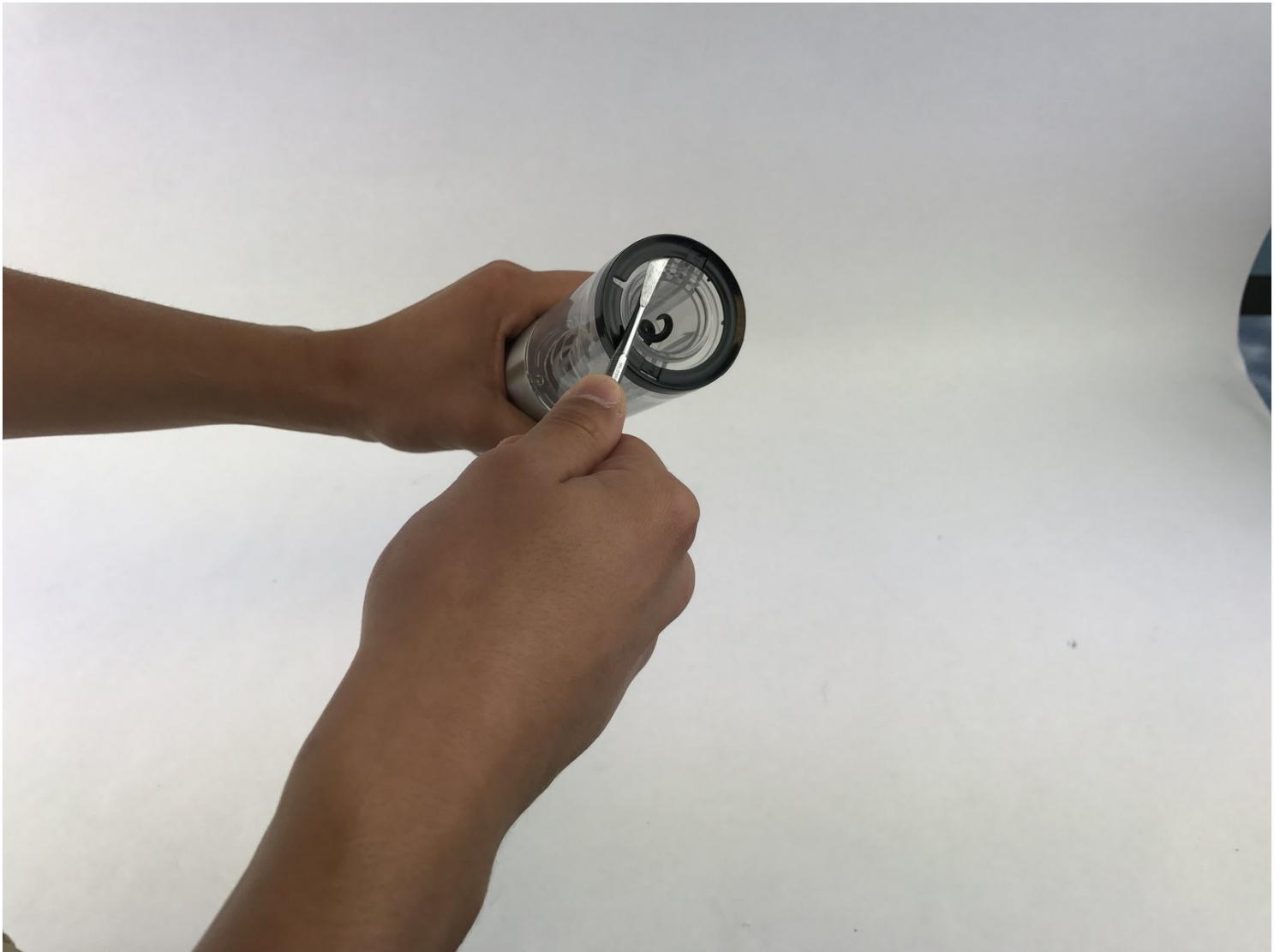




# Modal Rechargeable Wine Opener Power Button Replacement

In this guide we will be showing one how to...

Written By: Lauren Spicher



# INTRODUCTION

In this guide we will be showing one how to replace the forward and backwards buttons to a Modal Rechargeable Wine Opener in 5 quick and easy steps.

---

## TOOLS:

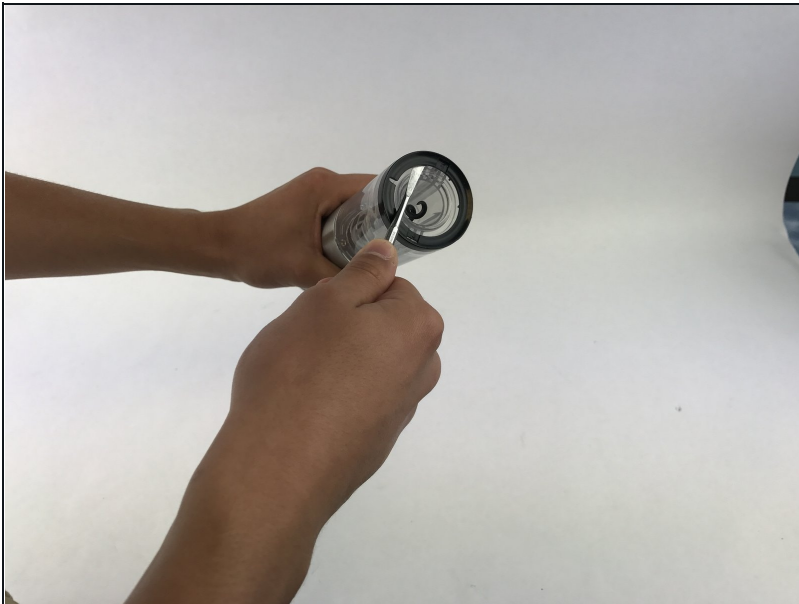
[Metal Spudger](#) (1)

[J1 Screwdriver Bit](#) (1)

[iFixit Precision Bit Driver](#) (1)

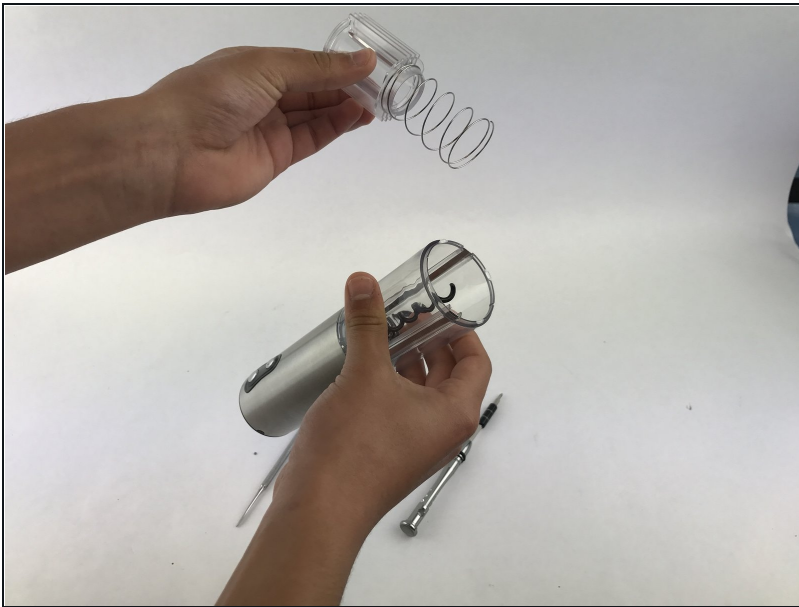
---

## Step 1 — Modal Rechargeable Wine Opener power button



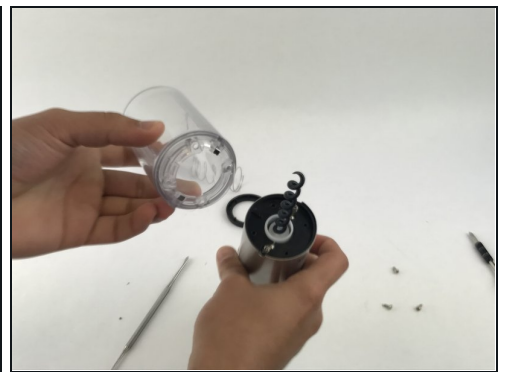
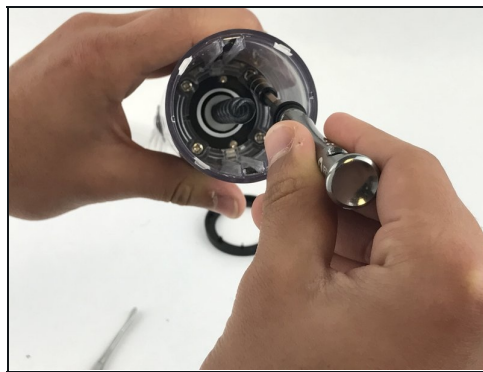
- Carefully place the spudger under the black cylindrical ring and pry it off the top.

## Step 2



- Remove the spring
- Remove the spring guide as well to obtain clear access to the screws

## Step 3



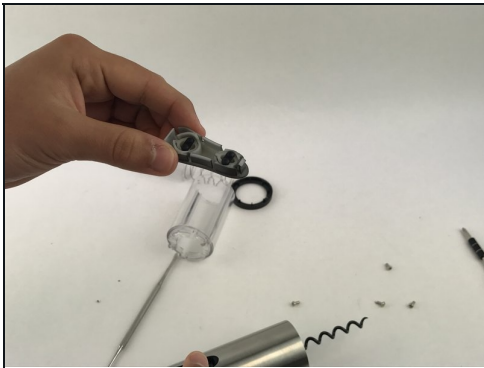
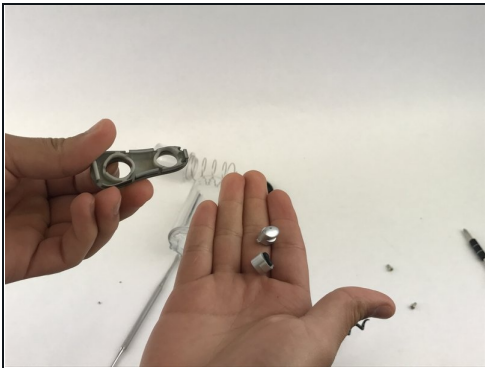
- Remove all four 4mm screws with a J1 Screwdriver
- Remove the clear cylindrical cap

## Step 4



- Apply pressure to both of the springs on the surface near the corkscrew, releasing the button port.

## Step 5



- Remove the malfunctioning buttons from the plastic frame.

---

To reassemble your device, follow these instructions in reverse order.