



# Sirius Stiletto 100 Volume Button Replacement

This guide describes how to remove the volume button and replace it with a new volume button.

Written By: Morgan McDougald



## INTRODUCTION

The old volume button is removed by pushing the pushing the volume button upwards and popping it out of the device's case. The new volume button is installed by simply snapping it into volume button slot of the case..



### TOOLS:

- [Spudger](#) (1)
  - [Phillips #0 Screwdriver](#) (1)
-

## Step 1 — Front Cover



- Remove the battery (which also functions as the back cover) from the device. This step is not explicitly shown, but a picture without the battery cover shows the device post-battery removal.

## Step 2



- Use a Philip's head screw driver to remove the screws from the case.
- Place the screws in a small container to avoid losing them.

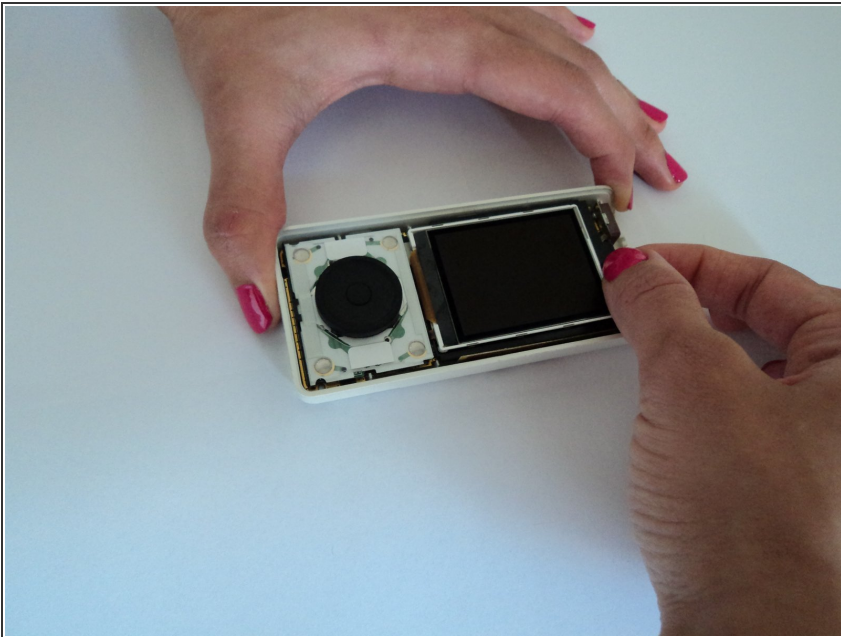


### Step 3



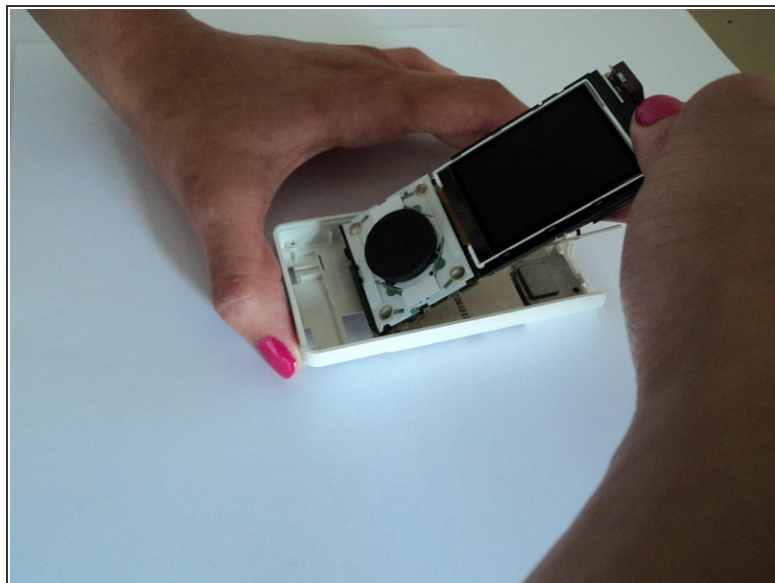
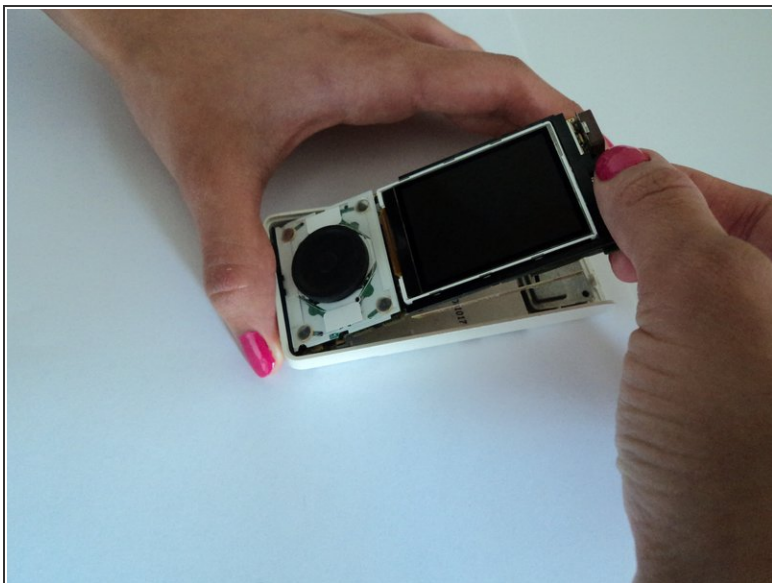
- Remove the front cover.
  - First, insert a small pry bar where the black front cover and white back cover meet.
  - Begin prying the black plastic up, slowly moving around to the bottom and other side.
  - At an angle, carefully pull up on the front cover separate the two pieces.
- Excellent! Now you have removed the front cover!

### Step 4 — Circuit Board



- While looking down at the device, place your index finger at the top of the circuit board and your thumb on the device screen.

## Step 5



- Using your fingers, gently pull the top of the circuit board up toward you while also sliding the bottom of the circuit board away from the bottom of the Sirius Stiletto 100 back cover.

## Step 6



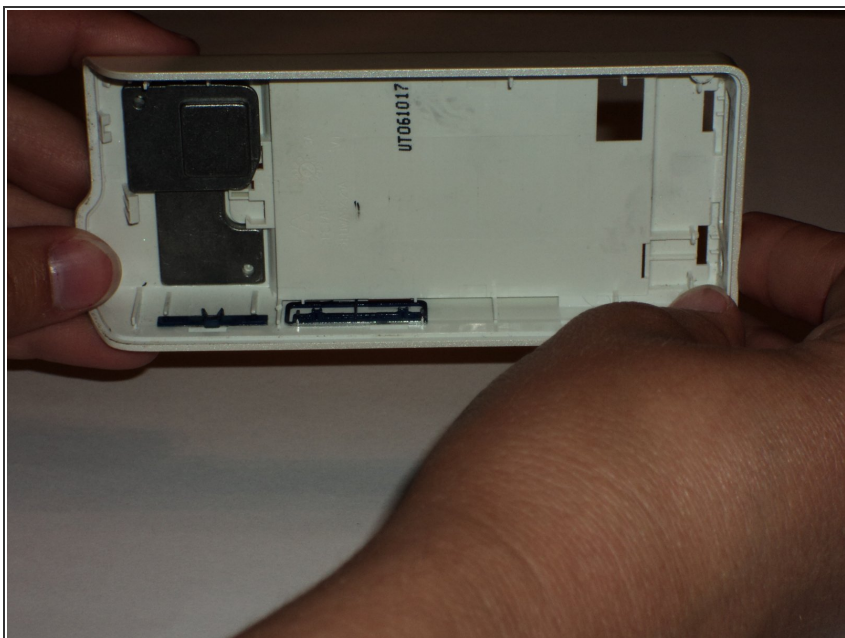
- Congratulations! You have successfully removed the internal circuit board from the Sirius Stiletto 100 back cover.

## Step 7 — Volume Button



- Locate the volume button on the side of the device. The volume button is indicated with an orange rectangle in the photograph.

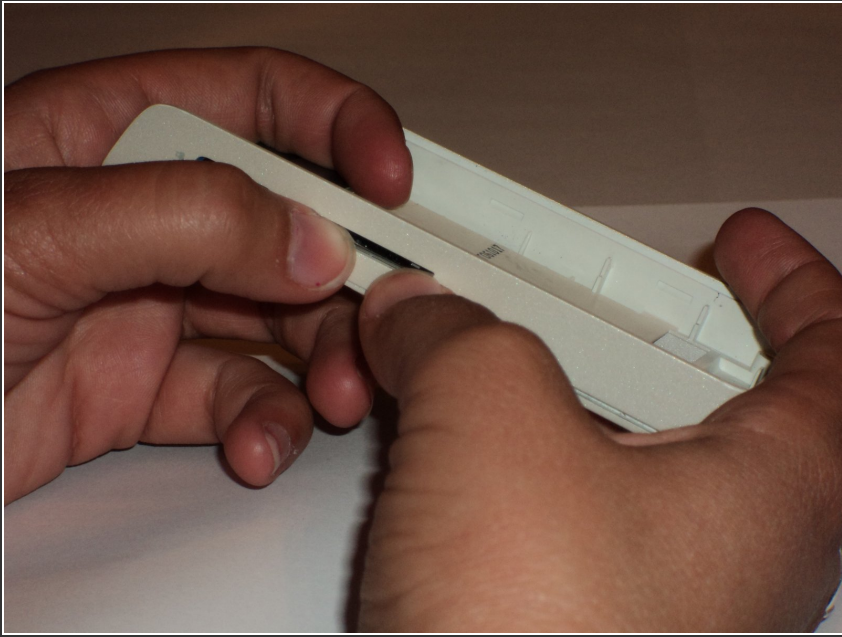
## Step 8



- Turn the device so that you are looking at the other side of the volume button (from "inside" the device).

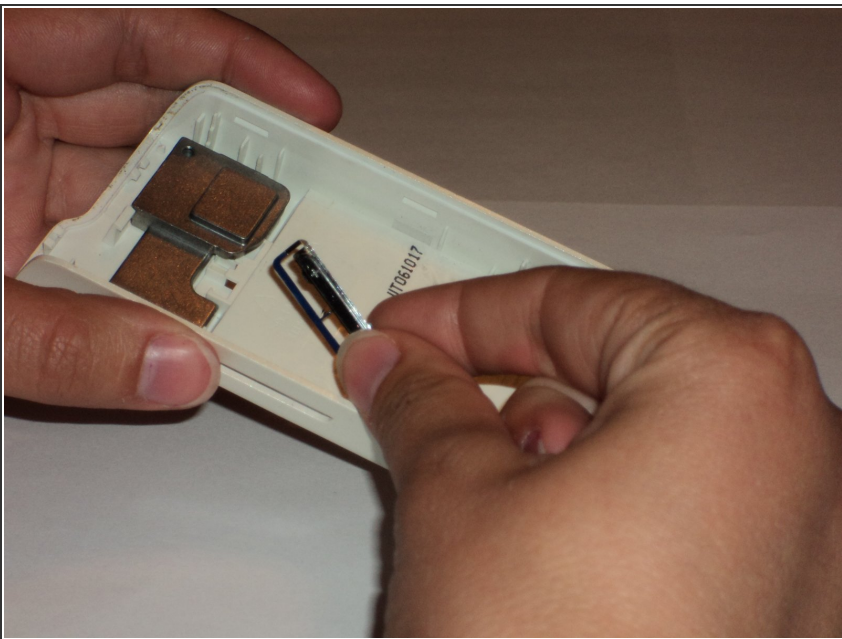


## Step 9



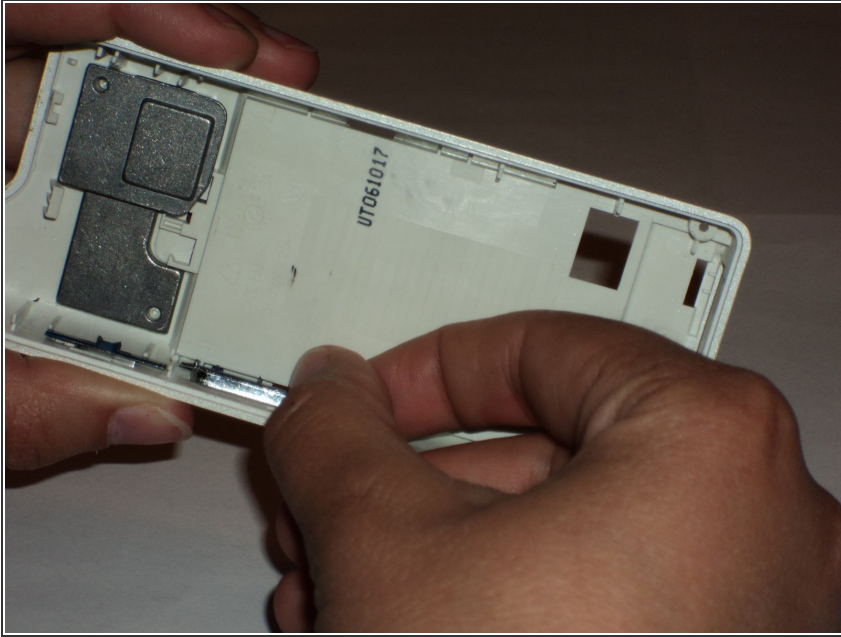
- Push on the volume button with both of your thumbs. Wiggle the volume button back and forth as you push upwards.
- The volume button will pop out.

## Step 10



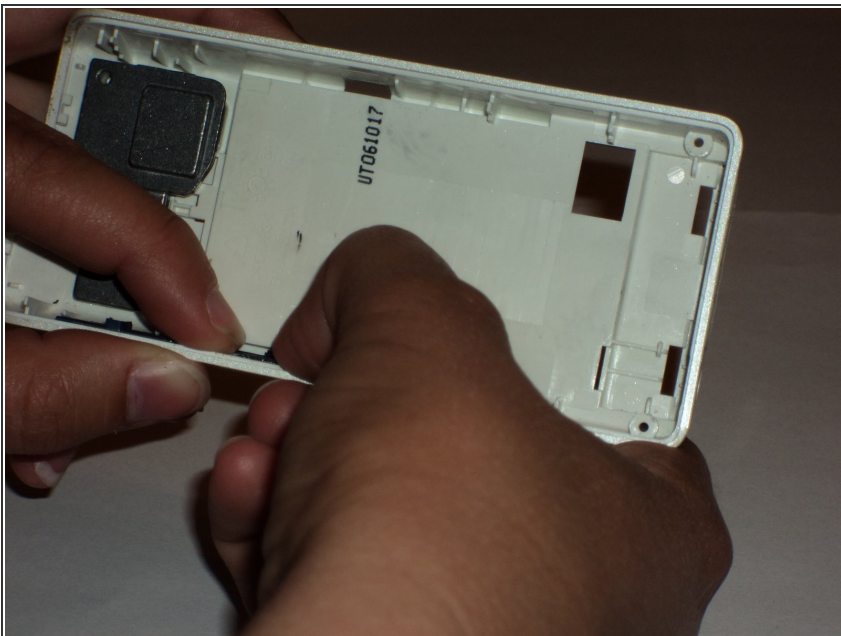
- Remove the volume button from the device.

## Step 11



- Slide the new volume button into the slot for the volume button.
- Make sure that the volume button is oriented correctly. An easy way to check this is to hold the volume button in place and look at the side of the device.

## Step 12



- Push down on the volume button to snap it back into the case.

To reassemble your device, follow these instructions in reverse order.