



# Olympus Stylus 760 LCD Screen Replacement

This guide shows how to remove and replace the LCD screen in the Olympus Stylus 760

Written By: Ryan Cosgrove







## TOOLS:

- [Phillips #00 Screwdriver](#) (1)
  - [iFixit Opening Tools](#) (1)
-

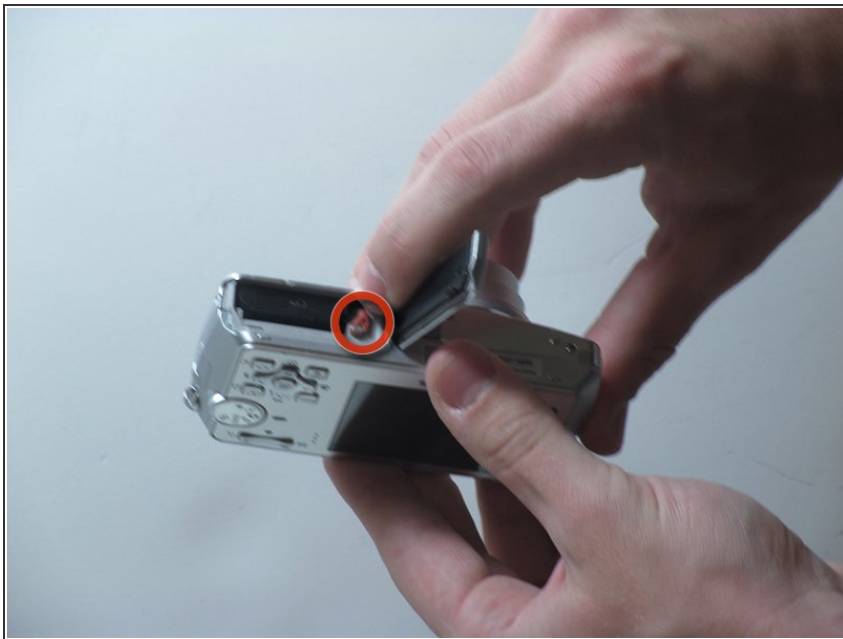


## Step 1 — Battery door



- Slide the door located on the bottom of the camera in an outward direction

## Step 2 — Release



- Pull back on the red release tab located on the left side of the battery.

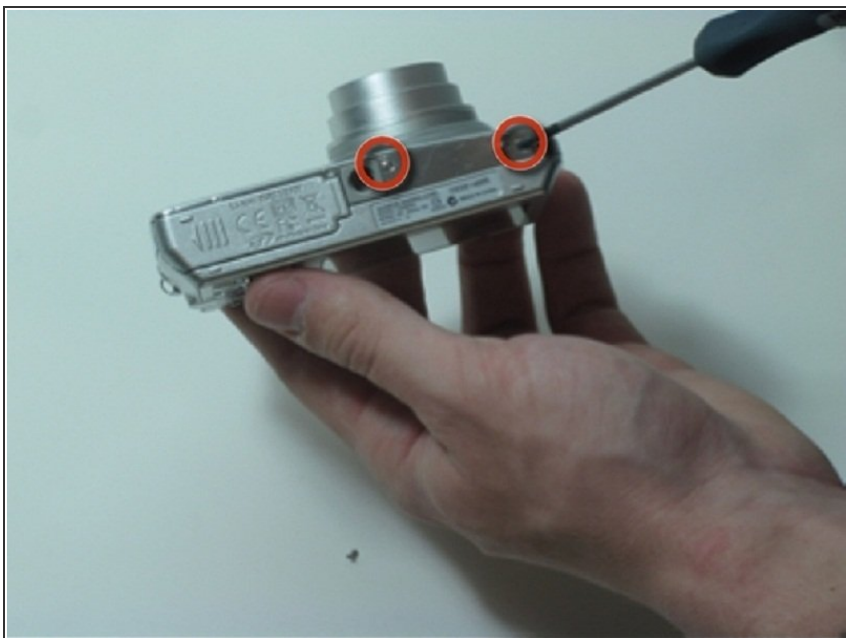


## Step 3 — Replacement



- Slide battery out of camera

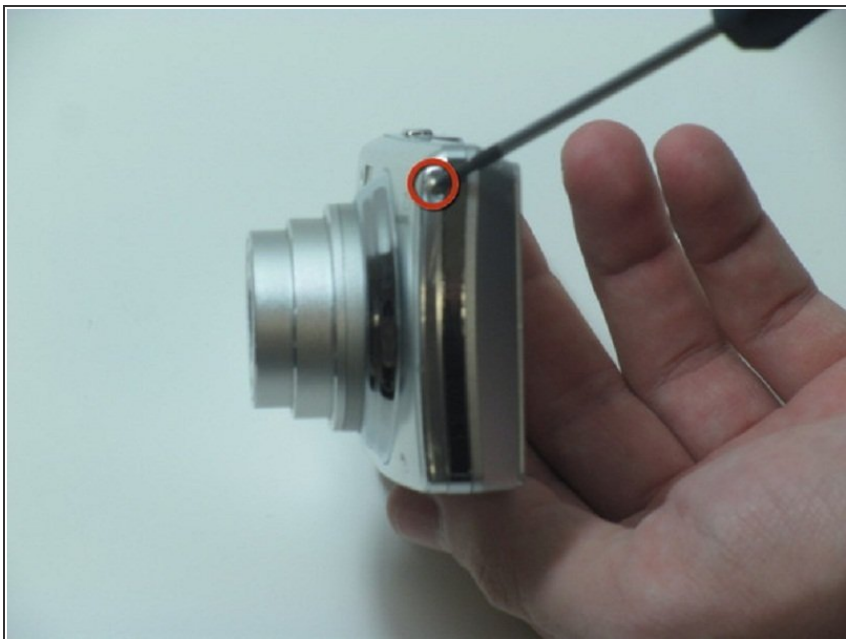
## Step 4 — LCD Screen



- Remove the 2 screws from the bottom of the camera

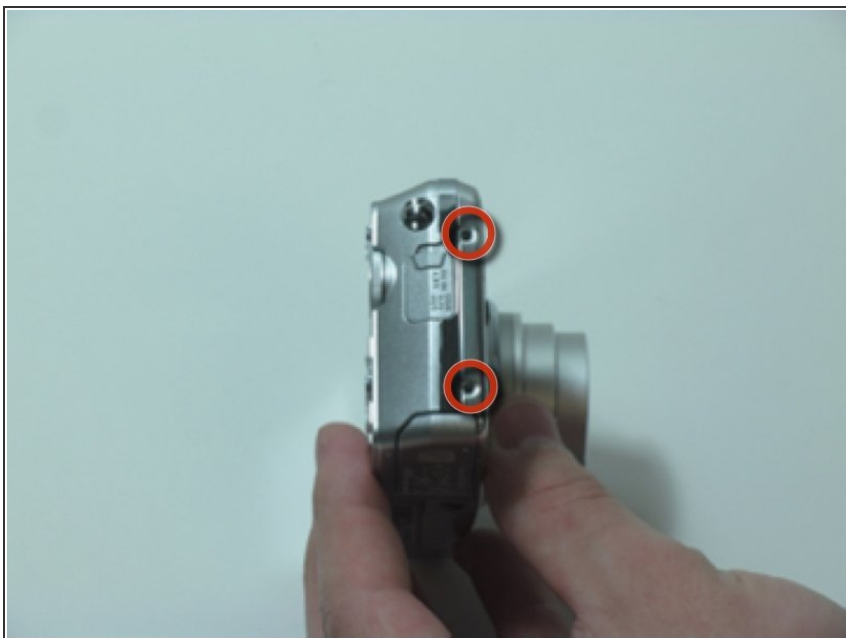


## Step 5



- Using a Phillips head size 0 screwdriver, remove the screw from the right side of the camera

## Step 6



- Remove the 2 screws from the left side of the camera



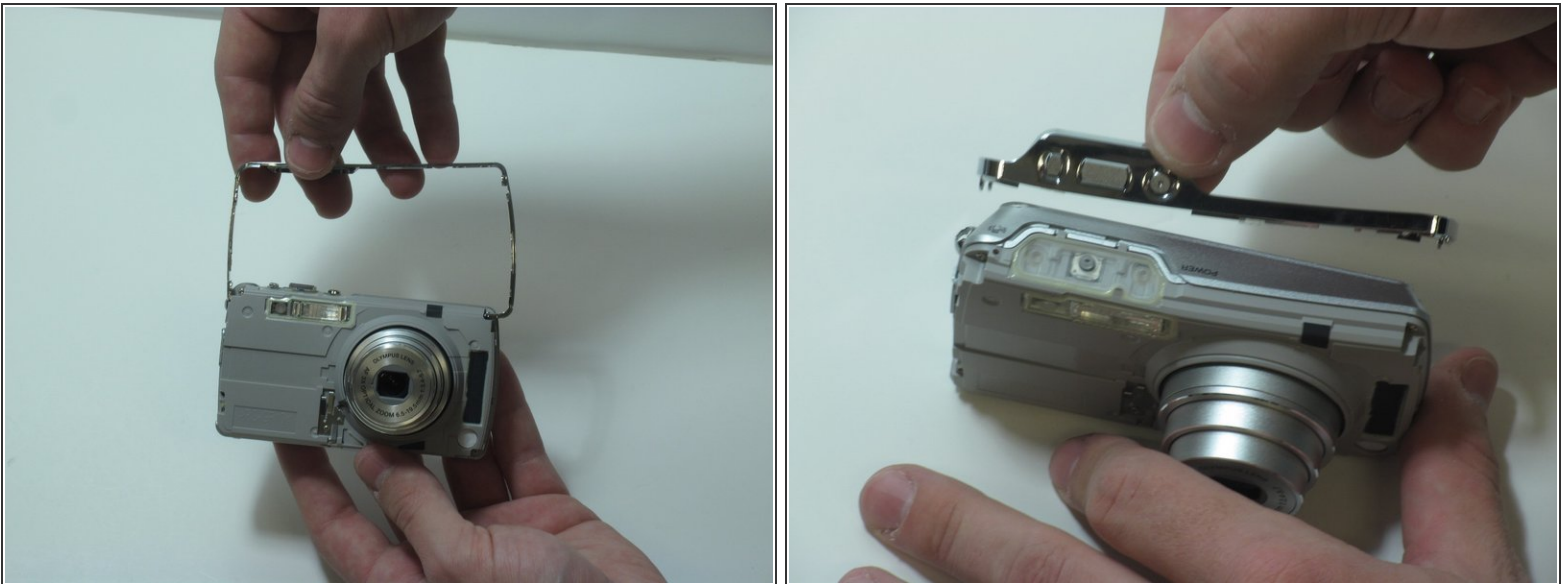
## Step 7



- Separate the front casing from the back using a plastic opening tool, gently.

⚠ Silver band and buttons will become loose when you remove the two pieces.

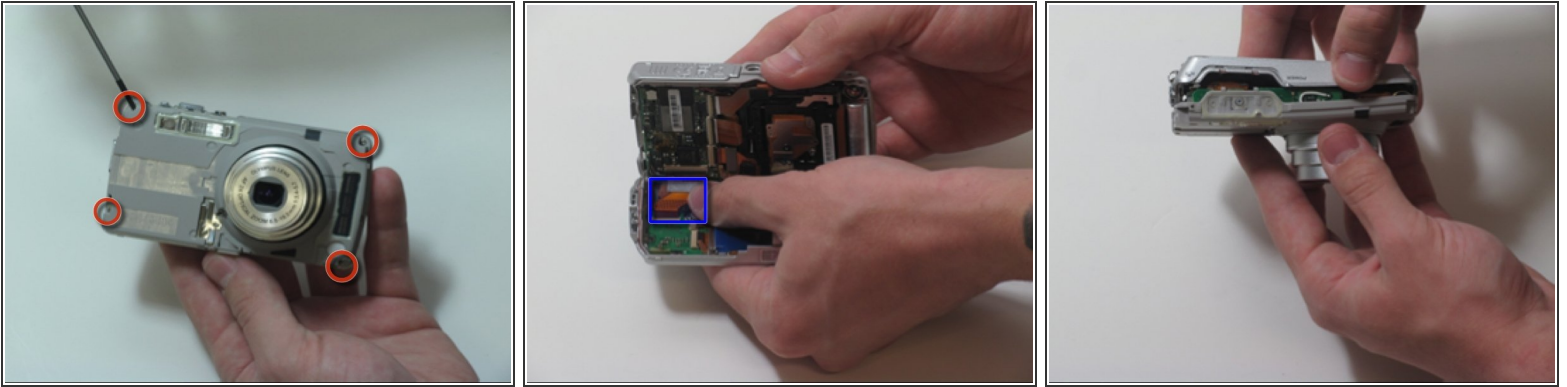
## Step 8



- Pull the silver bracket off of the camera



## Step 9



- Remove the 4 screws on the inner face of the camera.
- Circuit ribbon is attached at the top left of the camera. Be careful when separating the front and back of the camera.
- Pull the camera apart into 2 separate pieces.

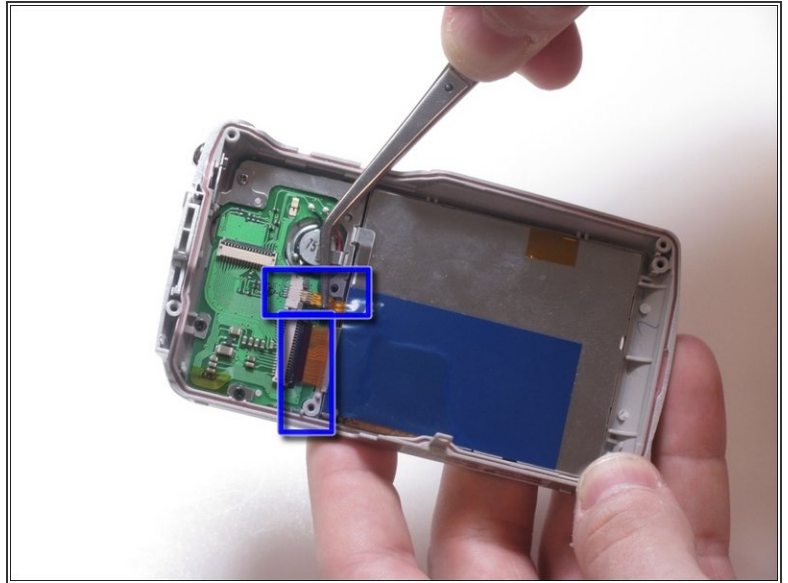
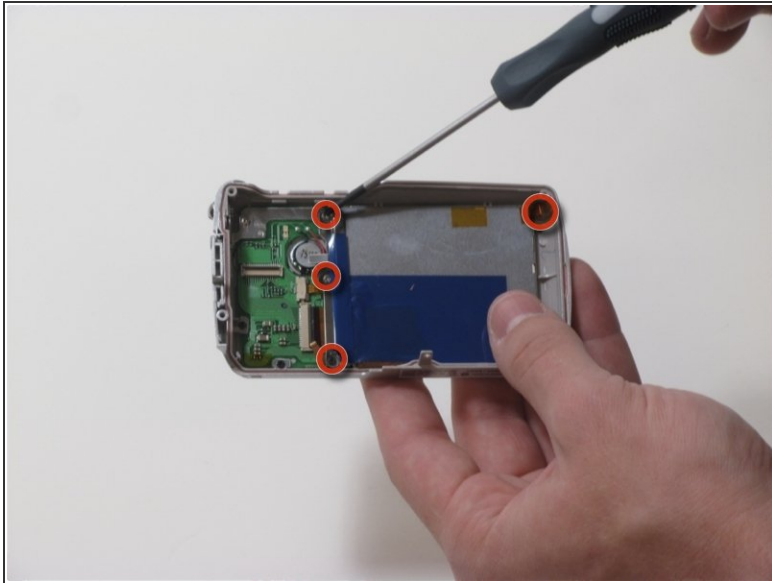
## Step 10



- You should be left with 4 large pieces, the outer case, inner lens piece, outer silver band and back case containing the LCD display.



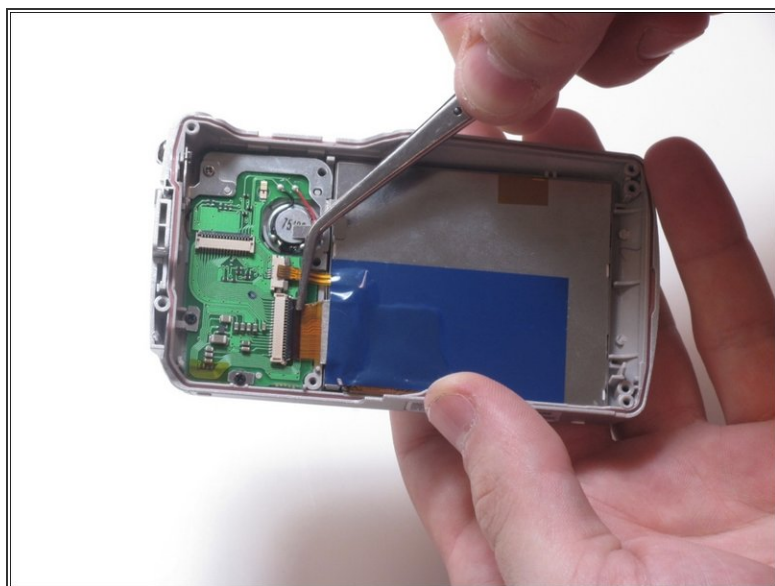
## Step 11



- Remove 4 screws holding the LCD screen in place.
- ⚠ Be cautious of the brackets that come loose when you remove the 3 screws on the right side of the camera
- LCD Screen is attached to 2 ribbon wires



## Step 12



- Pull up on the small ribbon wire to disconnect it from the circuit board
- Flip the little black clip up to remove the larger ribbon wire from the circuit board.

## Step 13



- Using a plastic separating tool, remove the LCD screen from the plastic casing.



To reassemble your device, follow these instructions in reverse order.