



# Olympus Stylus 760 Case Replacement

Instructions on how to take apart the outer case and to split the camera into the two main parts.

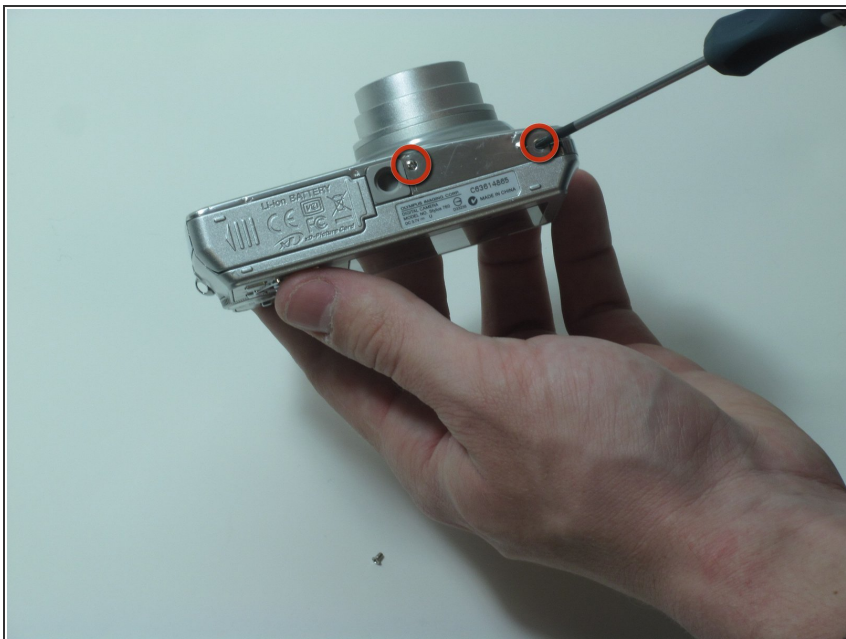
Written By: Tracy Donovan



 **TOOLS:**

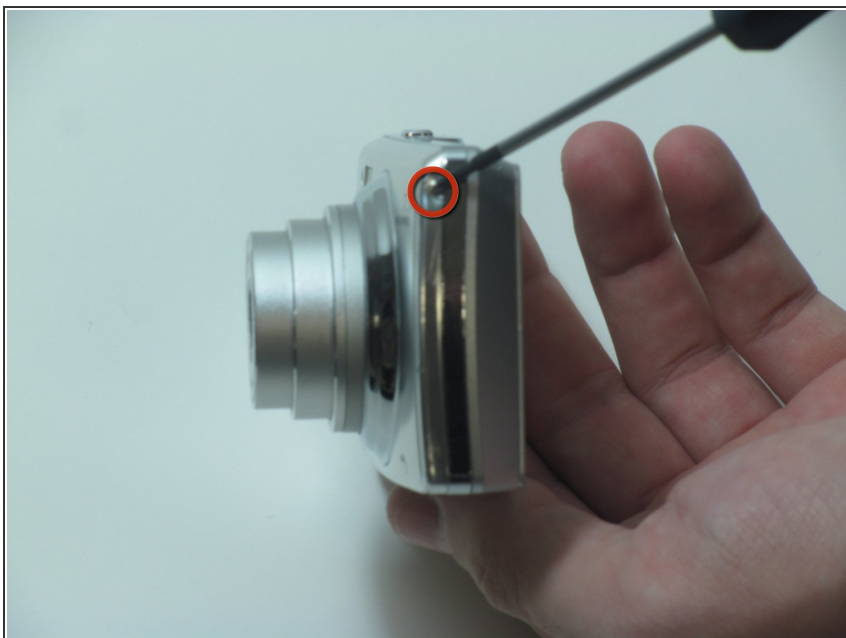
- [Phillips #00 Screwdriver](#) (1)
  - [iFixit Opening Tools](#) (1)
-

## Step 1 — Case



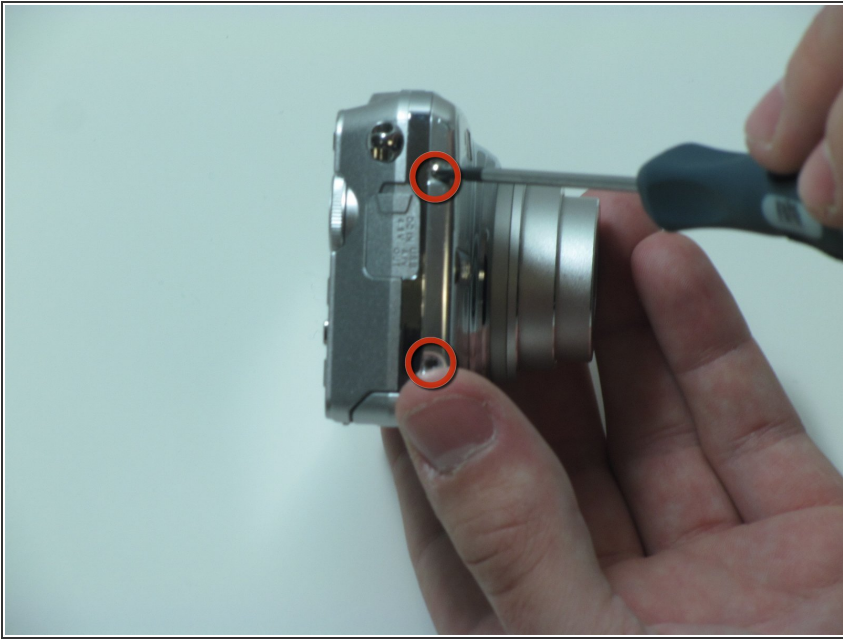
- Remove the 2 screws from the bottom of the camera

## Step 2



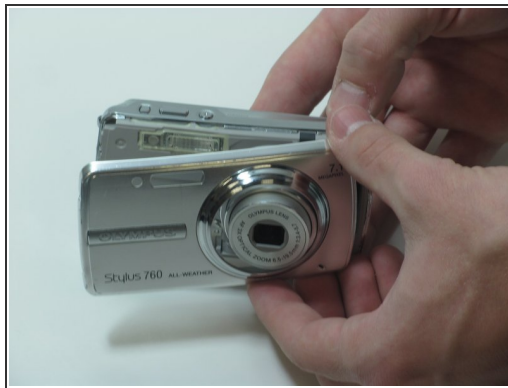
- Remove the screw from the right side of the camera.

### Step 3



- Remove the two screws from the left side of the camera

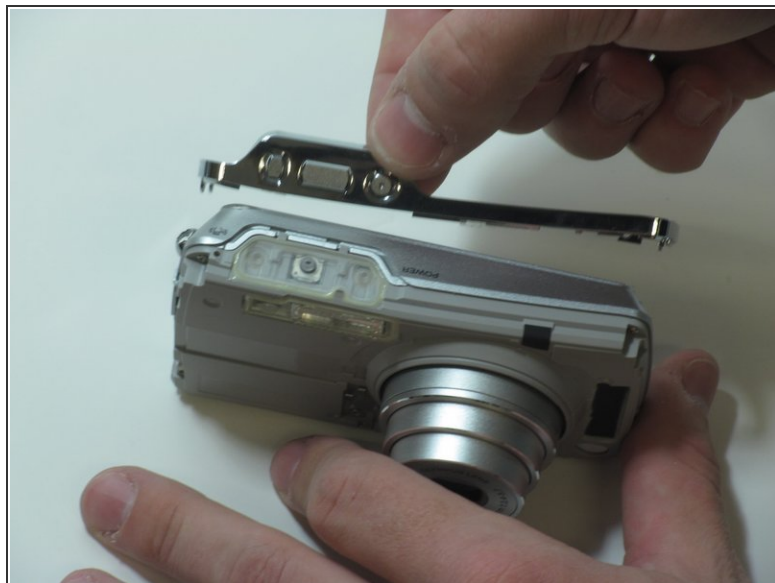
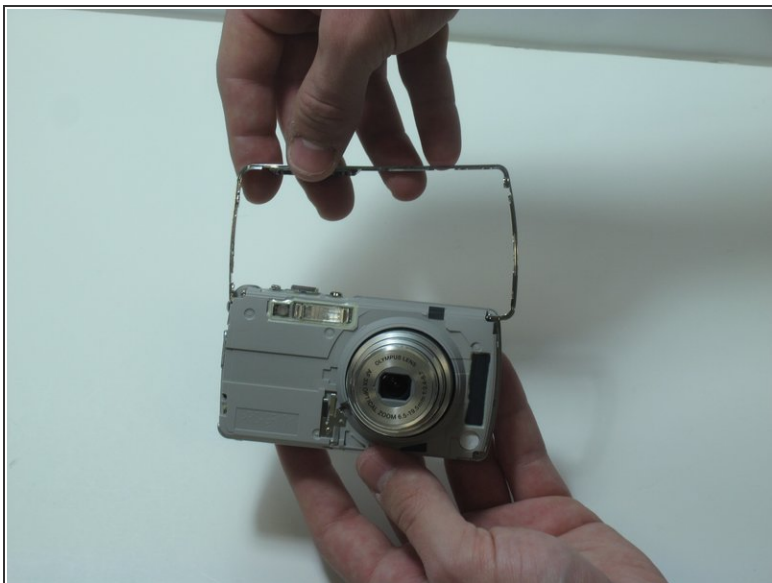
### Step 4



- Separate the front casing from the back using a plastic opening tool, gently.

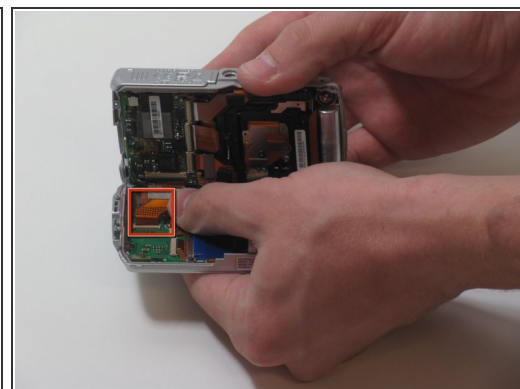
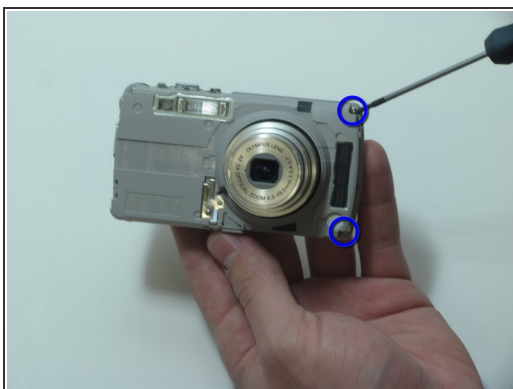
⚠ Silver band and buttons will become loose when you remove the two pieces.

## Step 5



- Pull the silver bracket and buttons off of the camera

## Step 6



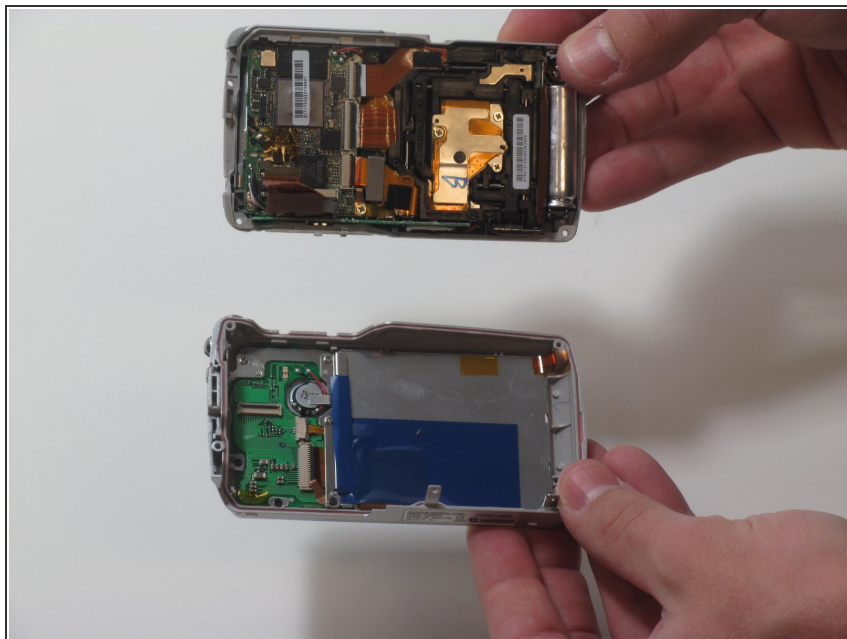
- Remove the 2 screws on the right side of the camera.

- Remove the 2 screws on the left side of the camera.

⚠ Circuit ribbon is attached at the top-left of the camera. Be careful when separating the front and back of the camera.

- Pull the camera apart into 2 separate pieces.

## Step 7



- Flip up clip on circuit ribbon, carefully
- Detach the ribbon from the rear to the front and pull it out, gently.

## Step 8



- i** You will be left with four major pieces

To reassemble your device, follow these instructions in reverse order.