

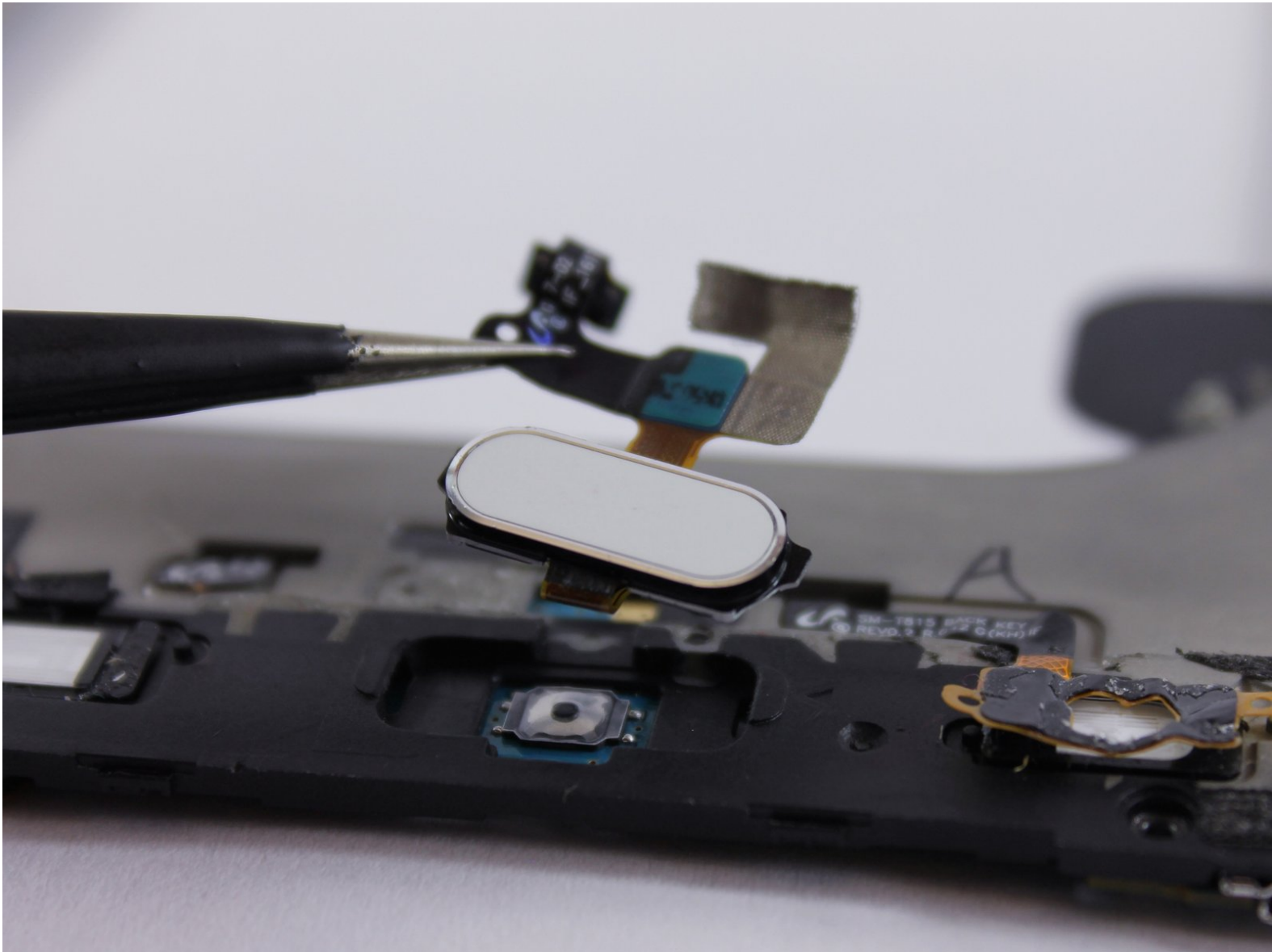


Samsung Galaxy Tab S2 9.7 Verizon Tablet

Home Button Replacement

Use this guide to replace the home button on a Samsung Galaxy Tab S2 9.7 Verizon Tablet

Written By: Divya Prabakaran



INTRODUCTION

If your home button is no longer functioning properly, it may have become worn or gotten stuck over time, this guide can help you replace it.




TOOLS:

- [Phillips #000 Screwdriver](#) (1)
 - [iOpener](#) (1)
 - [Suction Handle](#) (1)
 - [Metal Spudger Set](#) (1)
 - [Precision Tweezers Set](#) (1)
 - [ESD Safe Tweezers Blunt Nose](#) (1)
-

Step 1 — Back Case



 Turn off the tablet before disassembly.

- Heat up an iOpener for 30 seconds and place on all four seams of the screen. A heat gun can be used as well.

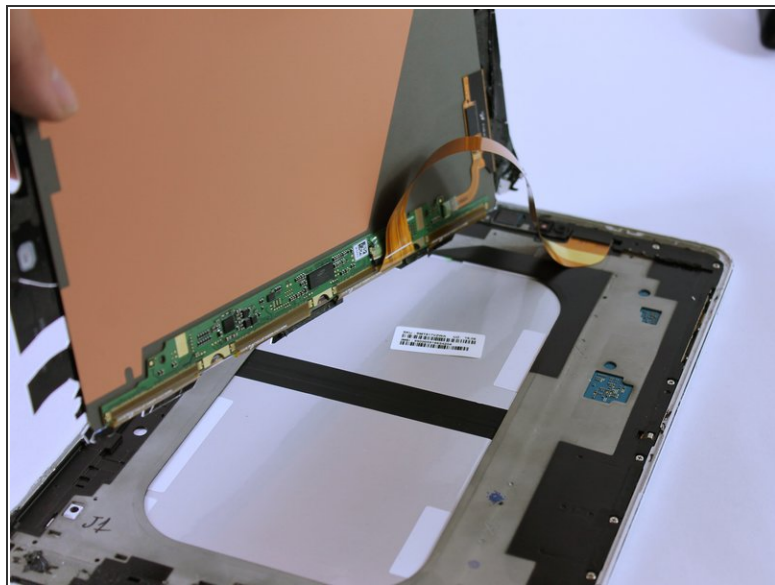
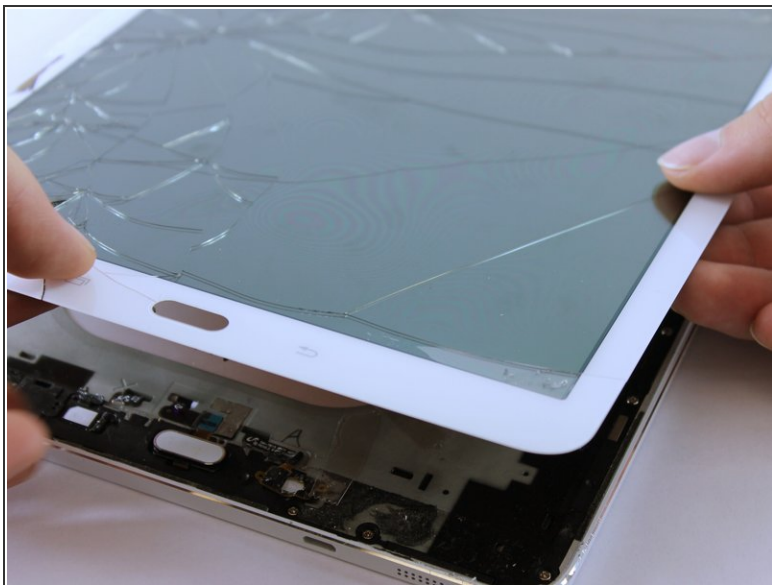
Step 2



- The glue is now melted, so using the metal spudger shown, pry open all sides of the tablet.
- When prying open near the home and touch screen buttons, use a suction cup.

 Do not stick the metal spudger past these buttons as this may damage your device.

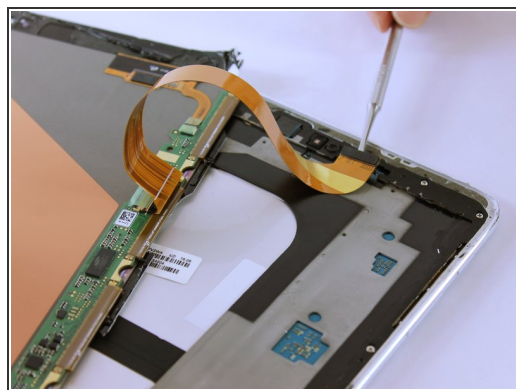
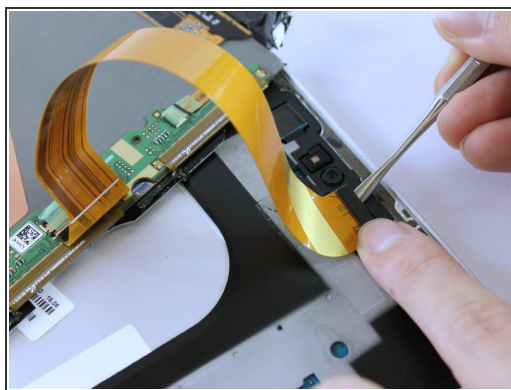
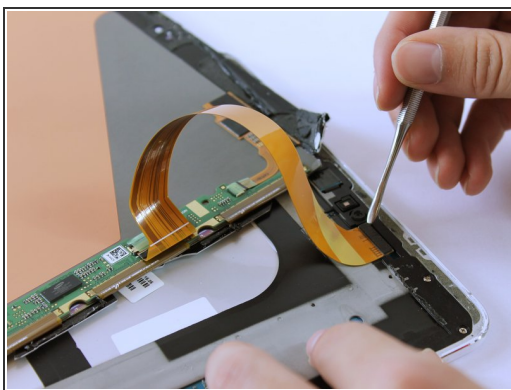
Step 3



- Carefully lift up the screen.

⚠ There is a ribbon cable attached. Lifting the screen too quickly can damage the cable.

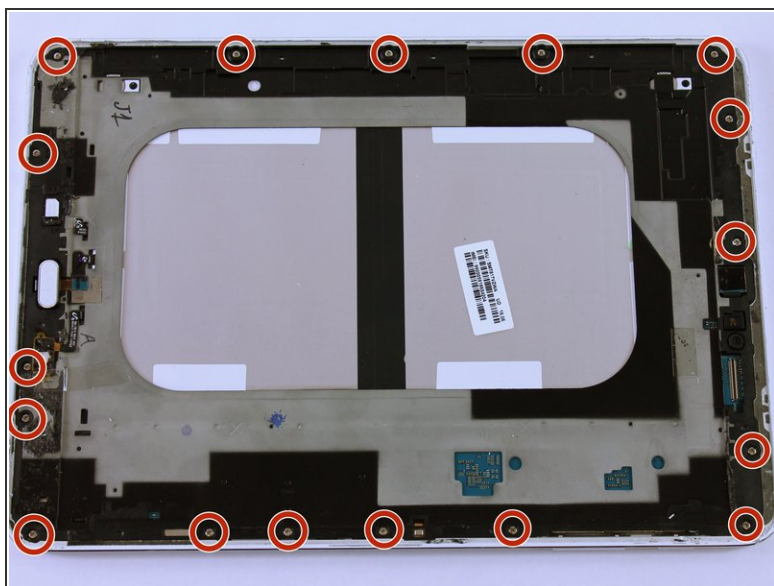
Step 4



- Remove the ribbon cable using the Metal Spudger.

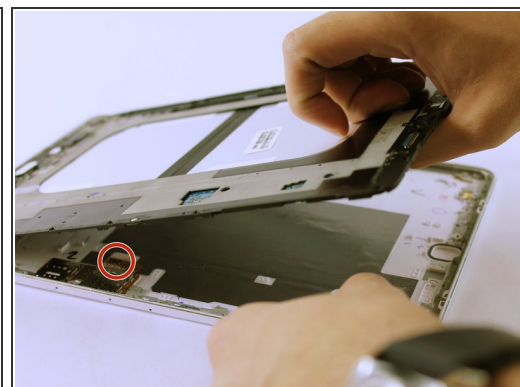
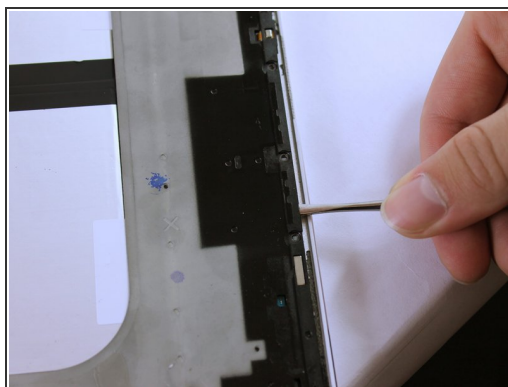
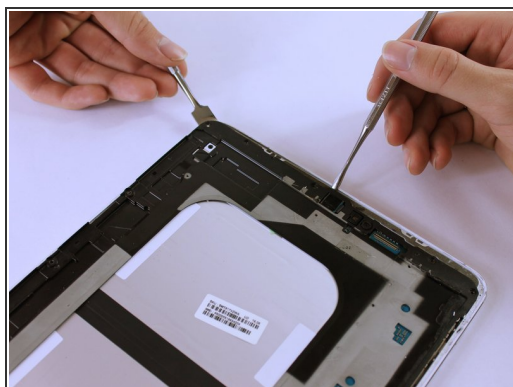
ⓘ The ribbon may be taped underneath to the grey frame. Gently lift the ribbon to untape it.

Step 5



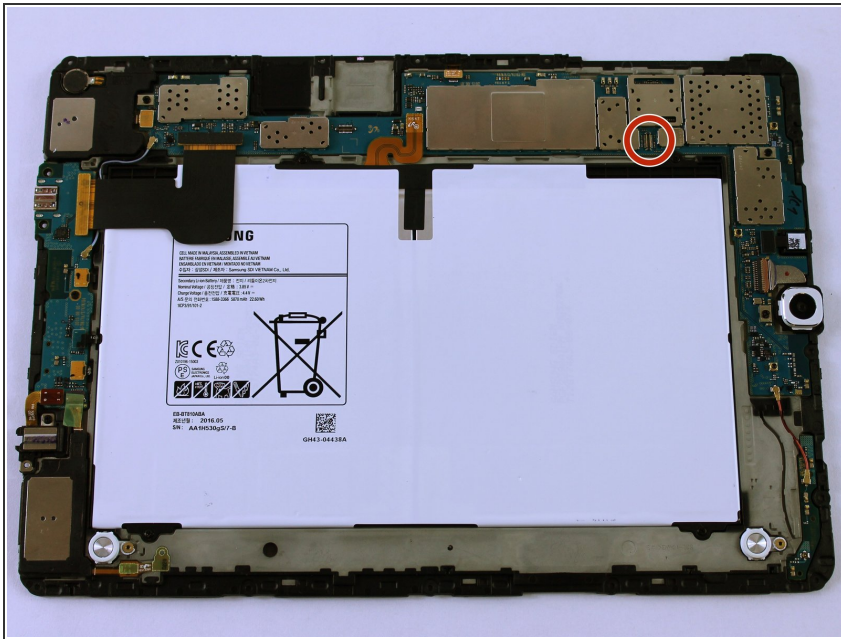
- Remove all seventeen 3 mm screws using a PH000 Phillips screwdriver.

Step 6



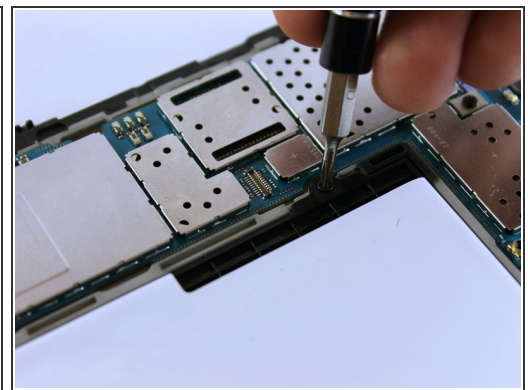
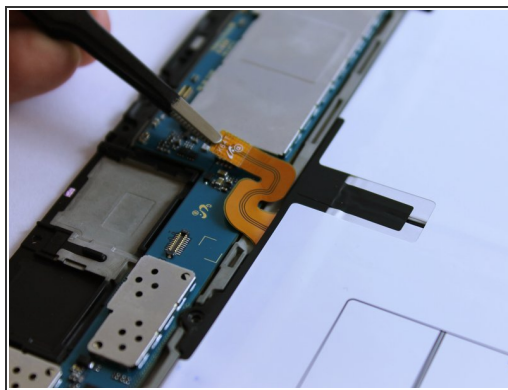
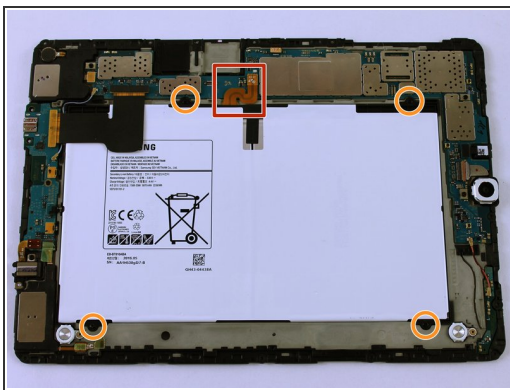
- Lift the black frame using the two Metal Spudgers shown.
- ❗ On the third picture, there is a Sim Card component that is connected to the frame and back cover. As you lift up the frame, it'll detach. This is normal.

Step 7



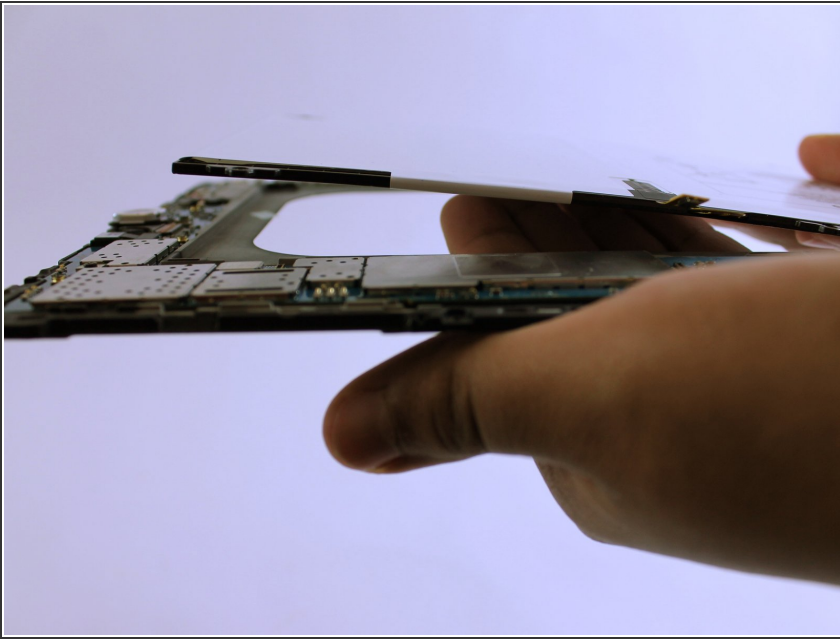
- Once lifted, flip the grey frame over.
- This component connects to the sim card.
- ☑ Remember to click this component back into place when reassembling the tablet.

Step 8 — Battery



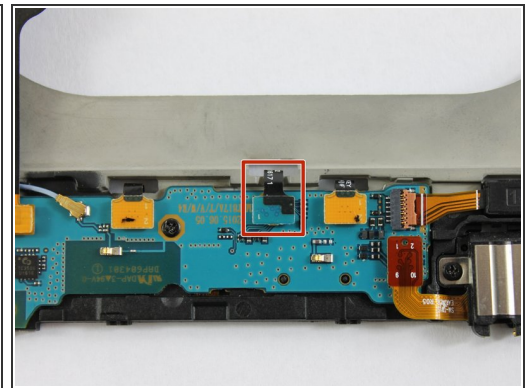
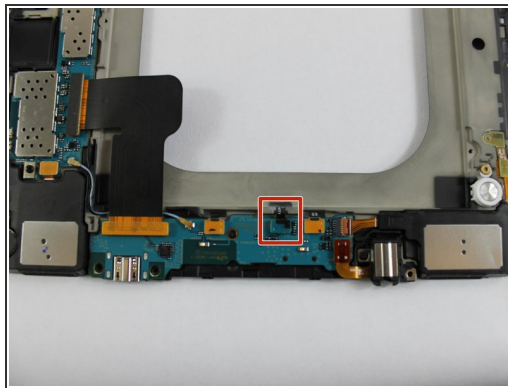
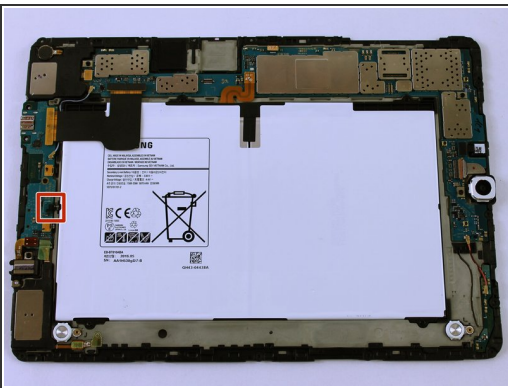
- Unclip the orange ribbon cable located above the battery using the Blunt ESD Tweezer.
- Remove the four black 3mm screws using a PH000 Phillips screwdriver.

Step 9



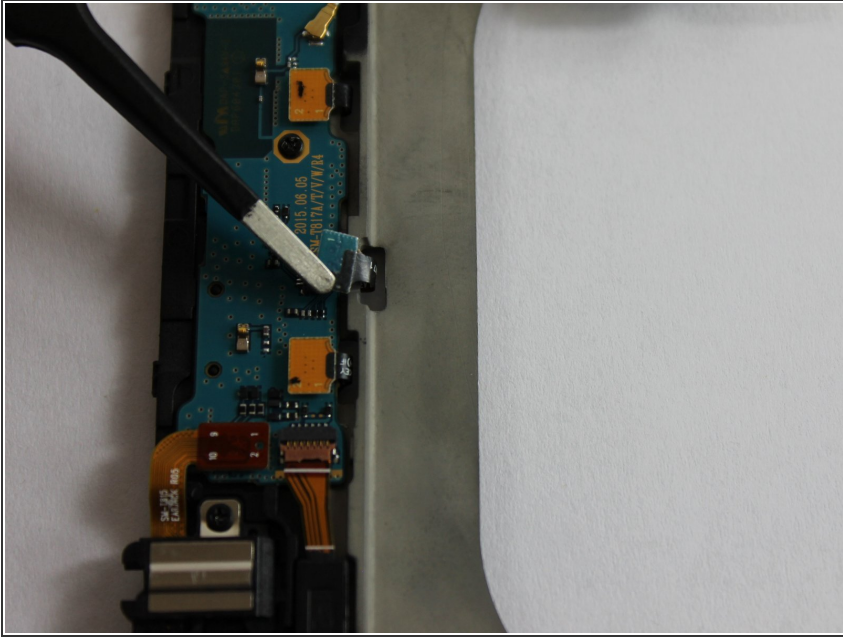
- Hold the frame and pop the battery off from the other side.

Step 10 — Home Button



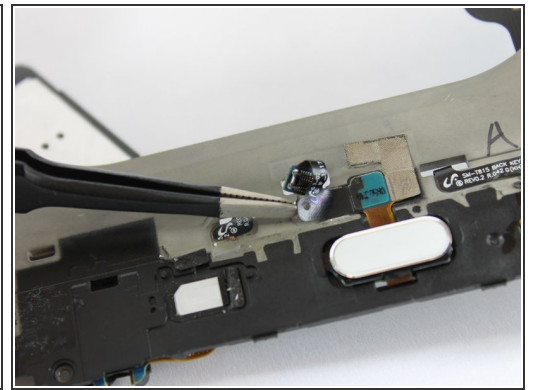
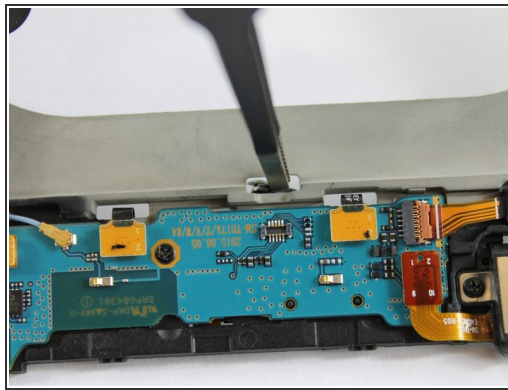
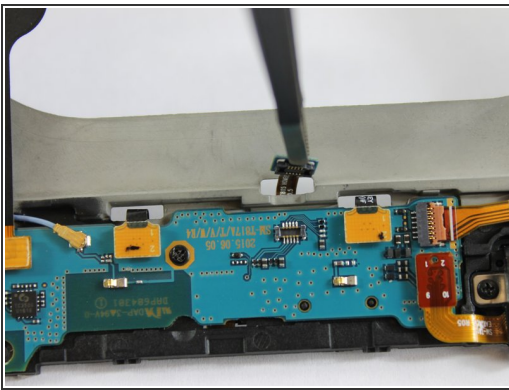
- This is where the ribbon cable for the home button is located.

Step 11



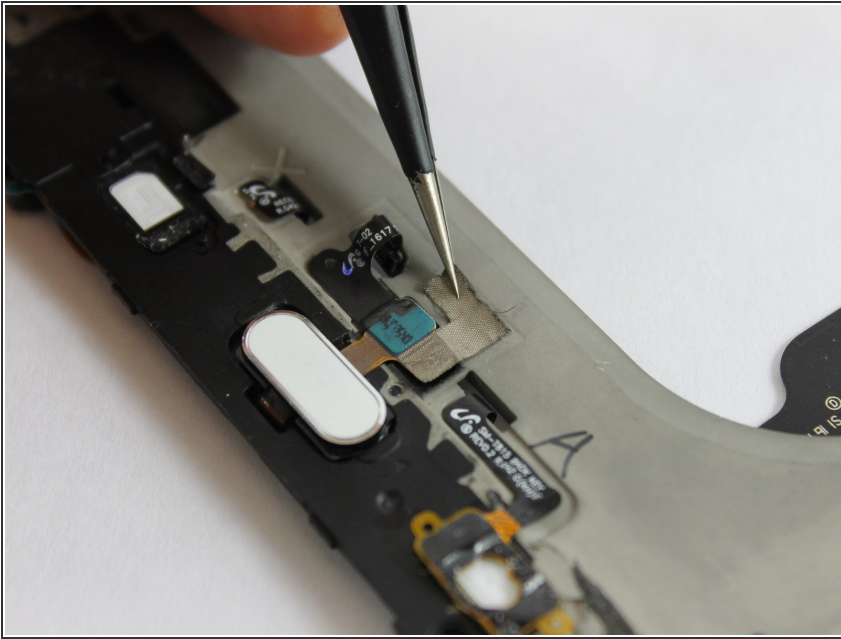
- Unclip the blue ribbon cable using the Blunt ESD Tweezer.

Step 12



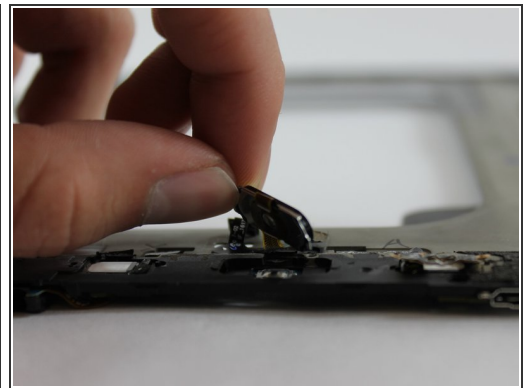
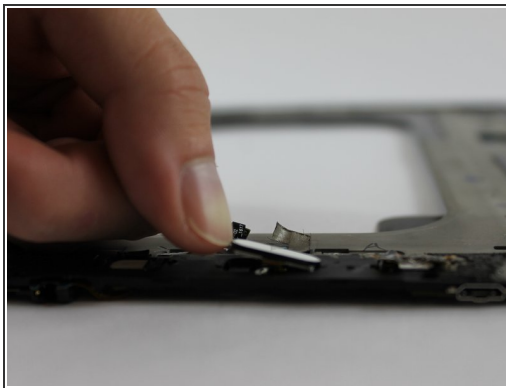
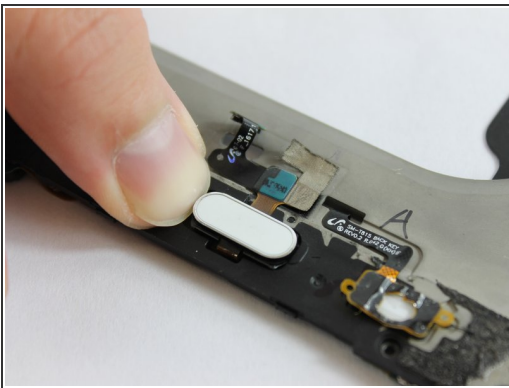
- Carefully push the cable through the hole to the other side of the frame.

Step 13



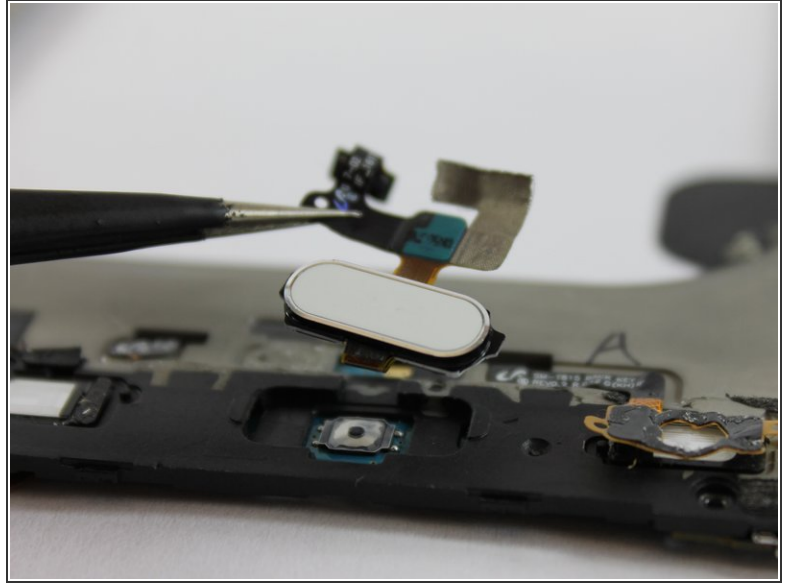
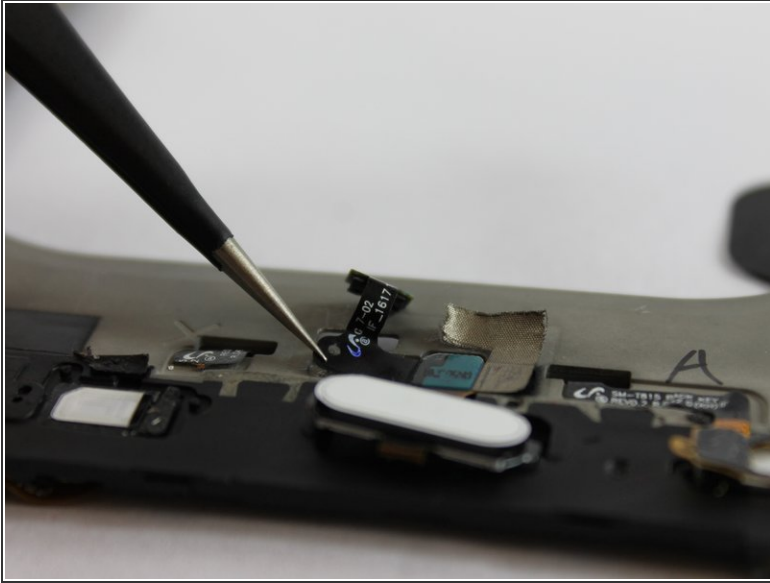
- Using the pointed ESD Tweezer, lift up the silver tape.

Step 14



- Using your thumb, push the home button to the right and lift up to dislodge it.

Step 15



- Peel the ribbon cable off carefully, it may be glued to the grey frame.
- Lift the home button.

To reassemble your device, follow these instructions in reverse order.