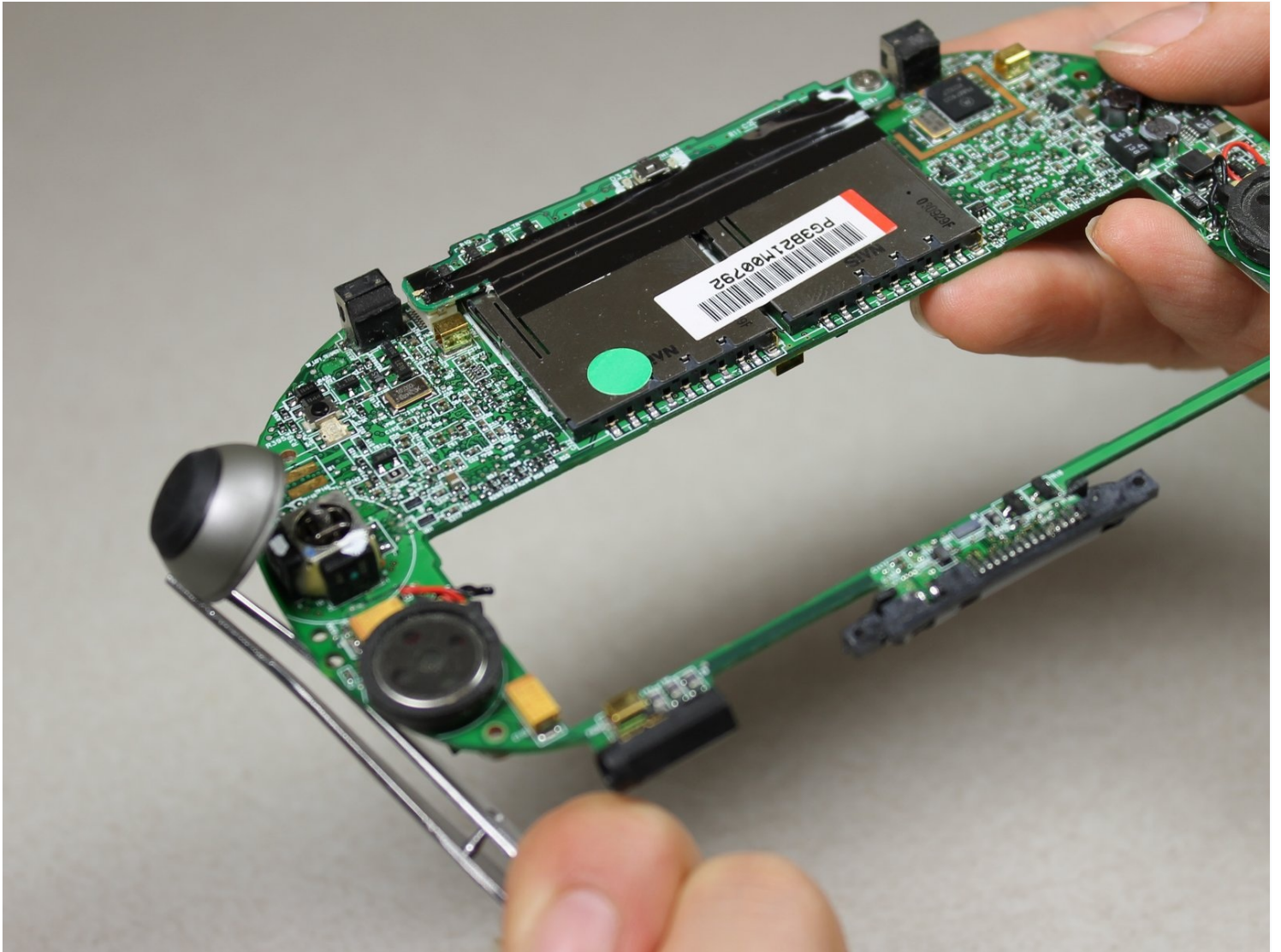




Tapwave T2907US Zodiac 2 Analog Stick Replacement

Written By: Daniel Wiseman



TOOLS:

Tweezers (1)

Phillips #00 Screwdriver (1)

Spudger (1)

T5 Torx Screwdriver (1)

Step 1 — Back Cover



- Remove the four Torx T5 screws from the back panel.

Step 2



- Wedge a spudger in between the front and back panel.
- Apply leverage downwards to the spudger in order to remove the back panel.

Step 3 — Battery



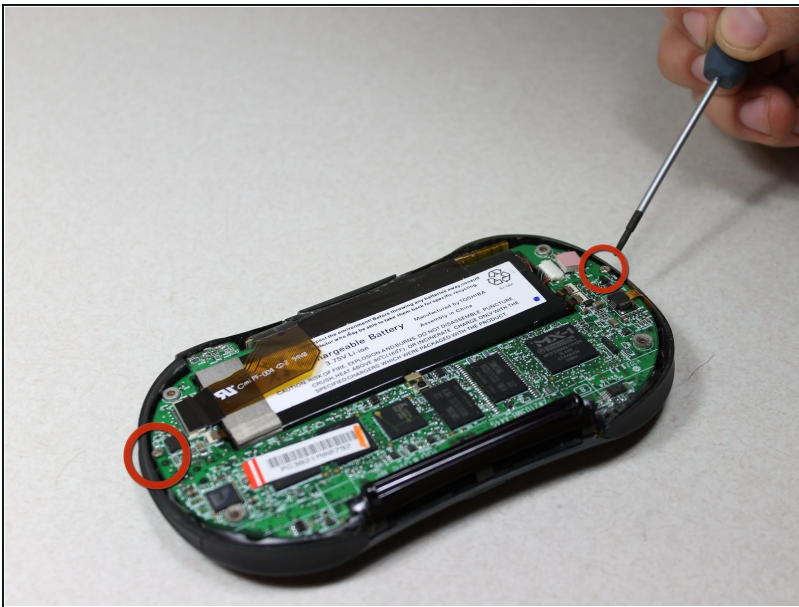
- Slide the battery out from under the brown wire-tape.
- Be careful of the wires still connected to the other end of the battery. Do not pull or damage may occur.

Step 4



- Slowly pull the white plug from its receptor. Grasp its sides firmly with a pair of [tweezers](#) and gently wiggle from side to side.

Step 5 — Motherboard



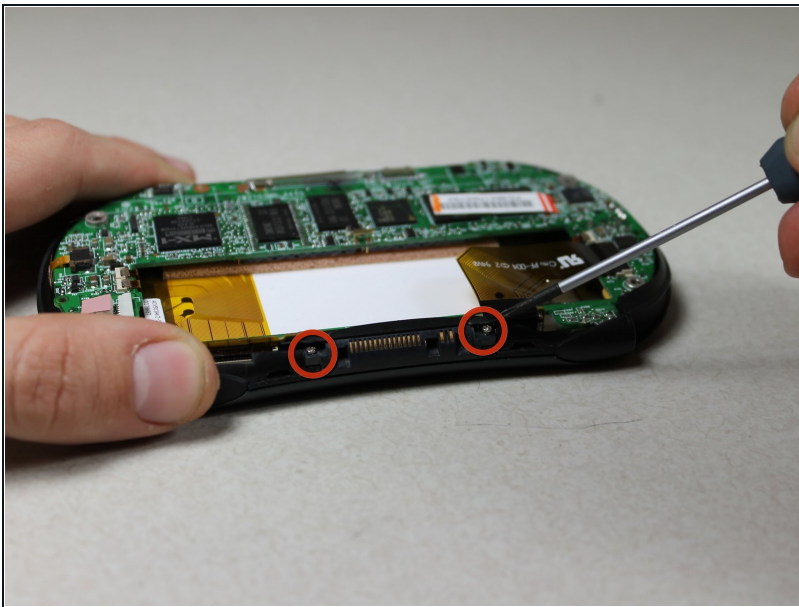
- Unscrew the 2 Philips #00 screws on each end of the motherboard.

Step 6



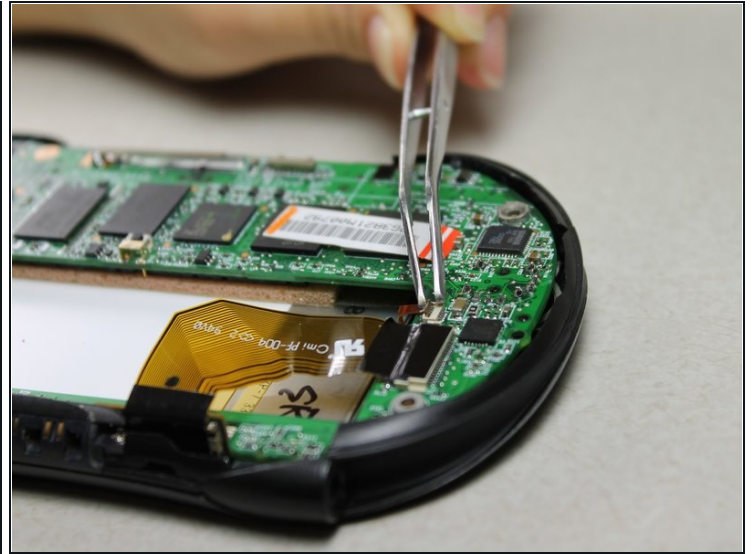
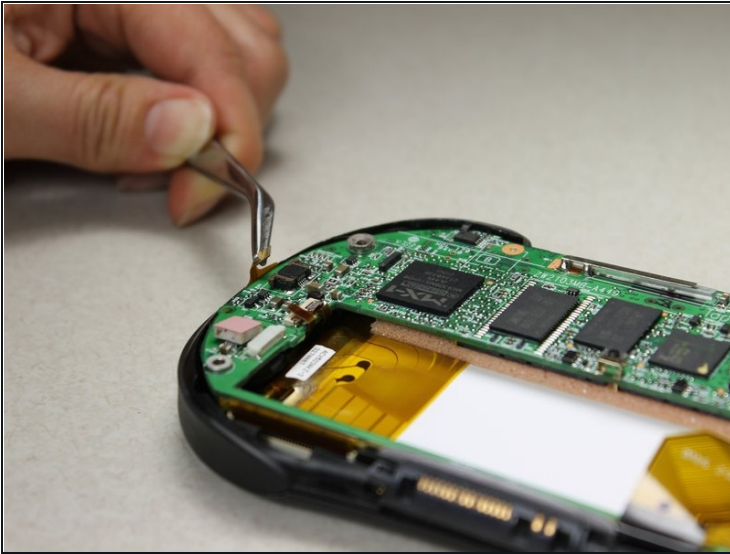
- Pull off the black memory card slot piece with [tweezers](#).

Step 7



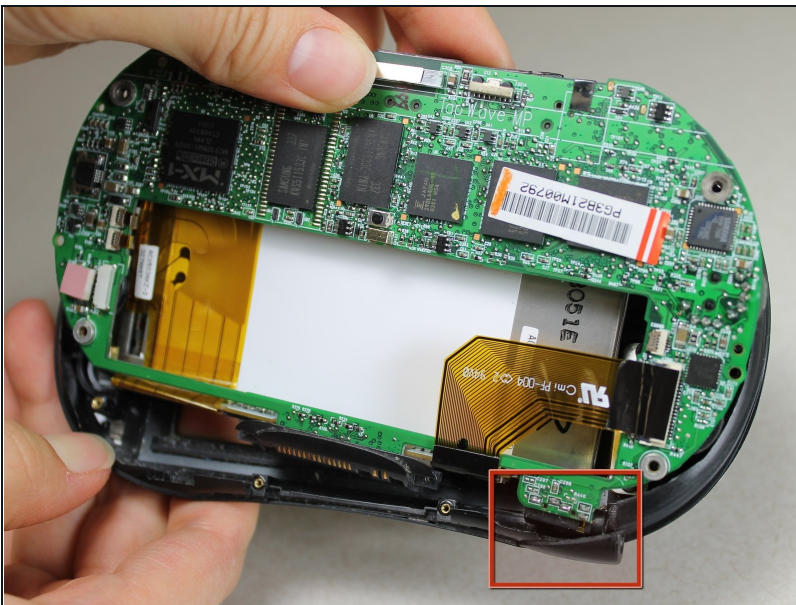
- Unscrew the 2 Philips #00 screws on each side of the charging port.

Step 8



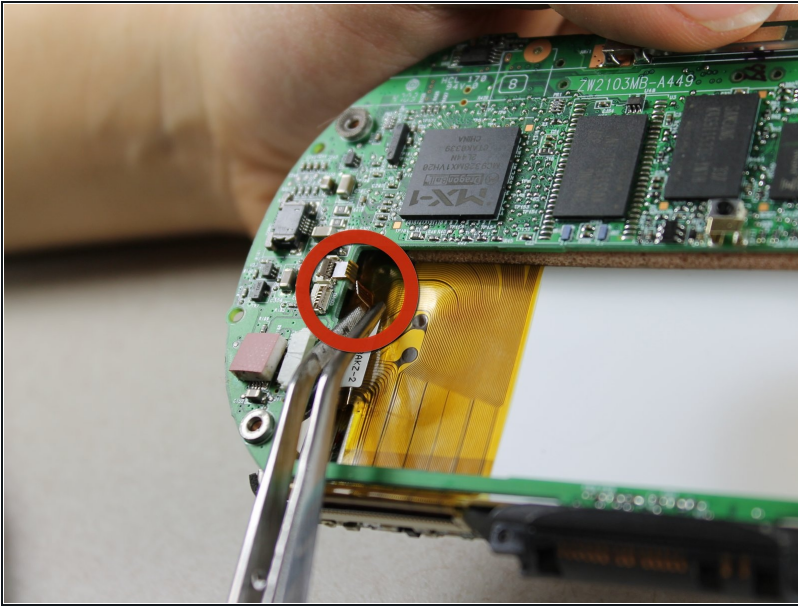
- Disconnect 2 brown wire-tape ends from each end of the motherboard. Gently pull straight out with tweezers.

Step 9



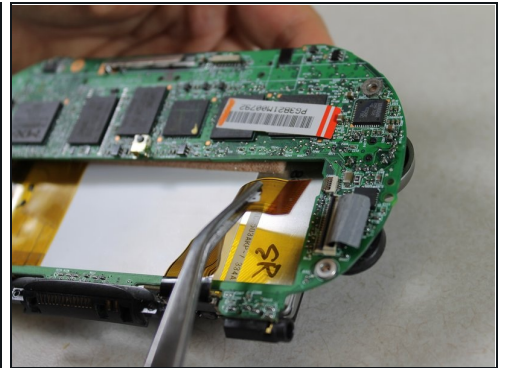
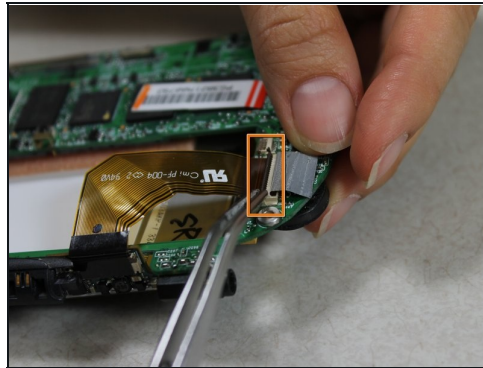
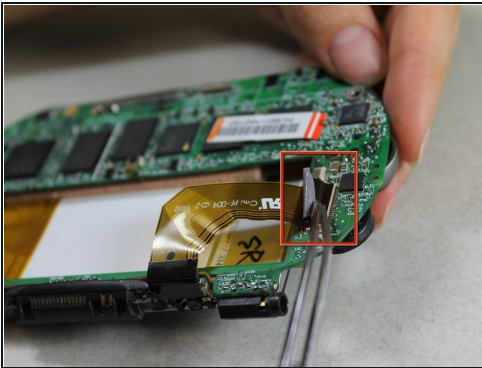
- Pull the motherboard and screen component diagonally up and left away from the auxiliary port entrance to remove.
- ① Glue connecting the auxiliary port to the casing may make it difficult to remove. Gently apply force as needed.

Step 10



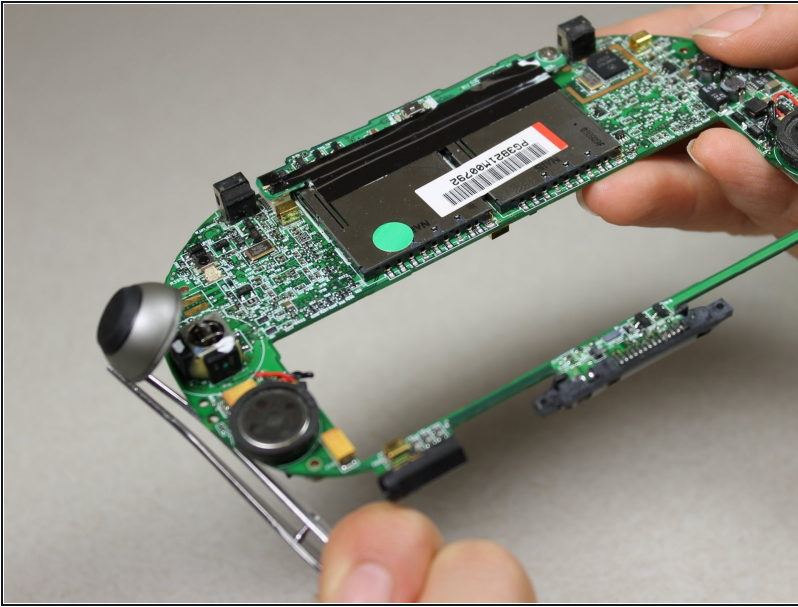
- Disconnect the 2 brown wire-tape ends from the left side of the battery slot on the motherboard using tweezers.

Step 11



- Disconnect the large brown wire-tape from the motherboard.
- Peel the black tape back from the wire-tape using tweezers.
- Lift the black, hinged, plastic lock with tweezers to release the wire-tape.
- The screen and motherboard components can now be separated from each other.

Step 12 — Analog Stick



- Use [tweezers](#) to remove analog stick straight upwards from its component on the motherboard.
- It should lock into place when installing a new one.

To reassemble your device, follow these instructions in reverse order.