



PowerBook G3 Wallstreet Clutch Cover Replacement

Written By: iRobot



INTRODUCTION

How to access the PowerBook G3 Wallstreet Clutch Cover.



TOOLS:

- [Anti-Static Wrist Strap](#) (1)
- [Phillips #0 Screwdriver](#) (1)
- [Spudger](#) (1)



PARTS:

- [G3 WallStreet Clutch Cover](#) (1)

Step 1 — Keyboard



- Remove both expansion bay modules using the levers on the front of the computer.
- Insert your index fingers inside the expansion bays and search for the two ribbed tabs on the underside of the upper case. The tabs are located near the bottom corners of the keyboard.
- Pull the tabs toward yourself and the keyboard will pop up.


Step 2



- Pull the keyboard forward to disengage the tabs holding it in back and rotate it toward you.
- Rest the keyboard on the trackpad.

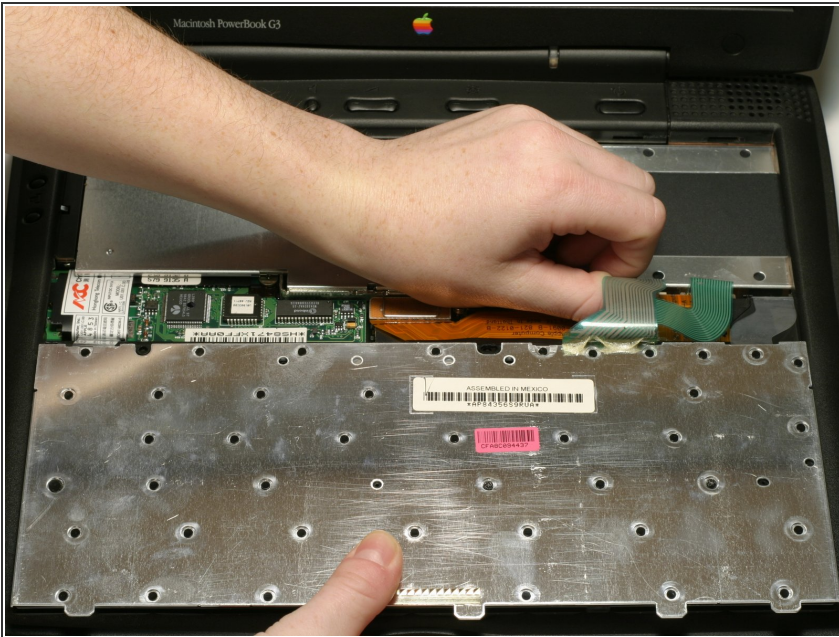
Step 3



 This is a diagram of the ribbon clamp connectors you will disconnect in the next step.

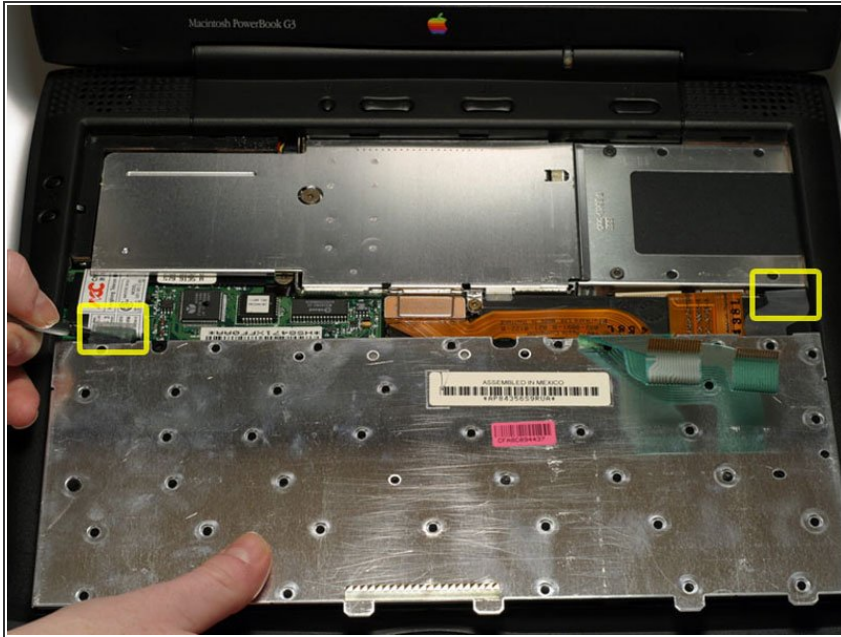
- 1) With your fingernails, grasp the locking bar on either side and pull up a small amount (about 1/16" or 2 mm).
- 2) After disengaging the locking bar, slide the cable out of the connector.

Step 4



- Disconnect the two keyboard connectors by disengaging the clamps and pulling the ribbons directly upward.

Step 5



- Slide a spudger downward between each plastic strain relief cable and the wall of the case in order to bow out the cable beyond the small tab holding it in place.
- Once the strain relief cables are free, lift the keyboard off.

Step 6



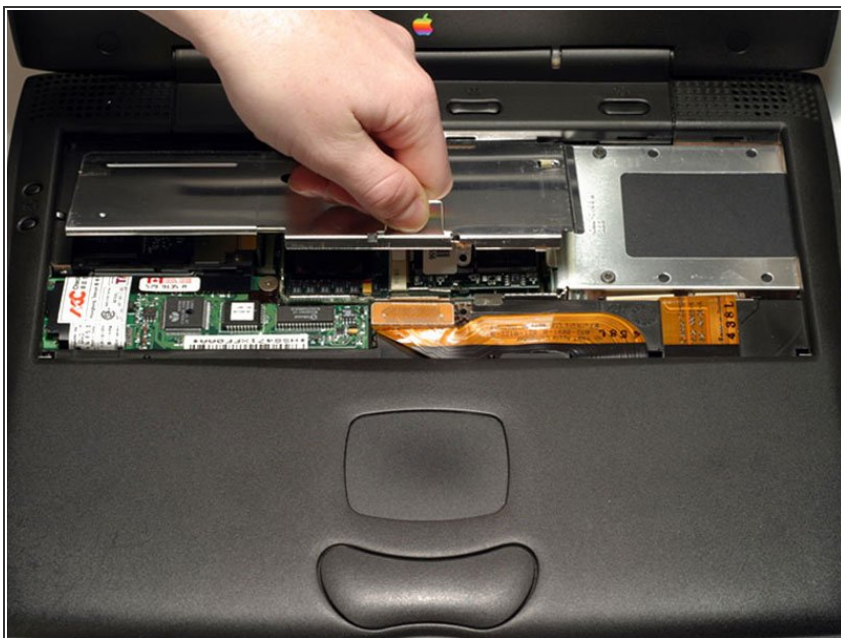
- Your laptop should look approximately like this.

Step 7 — Heat Shield



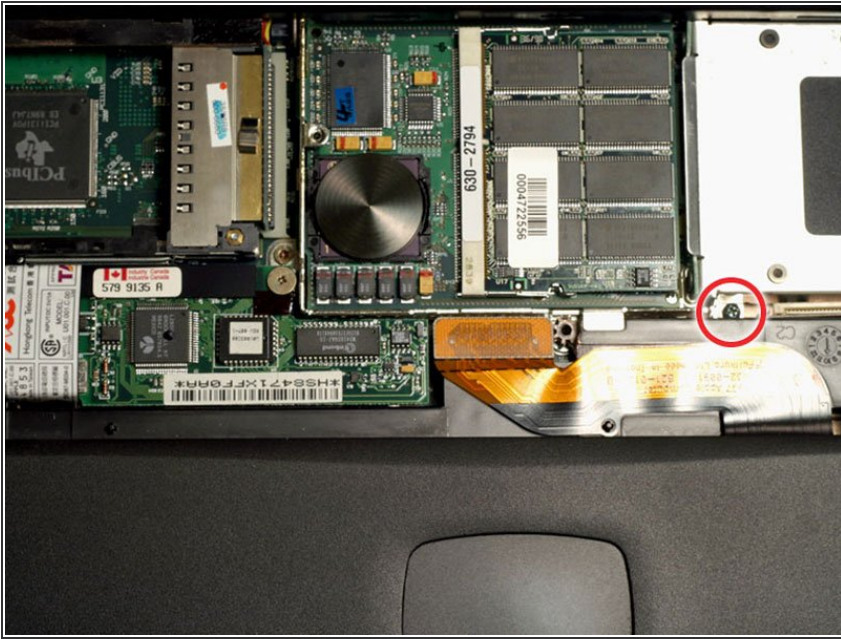
- Remove the two Phillips screws from the heat shield.
- ☑ One screw is shorter than the other. When putting the Wallstreet back together, this screw goes in the middle of the heat shield.

Step 8



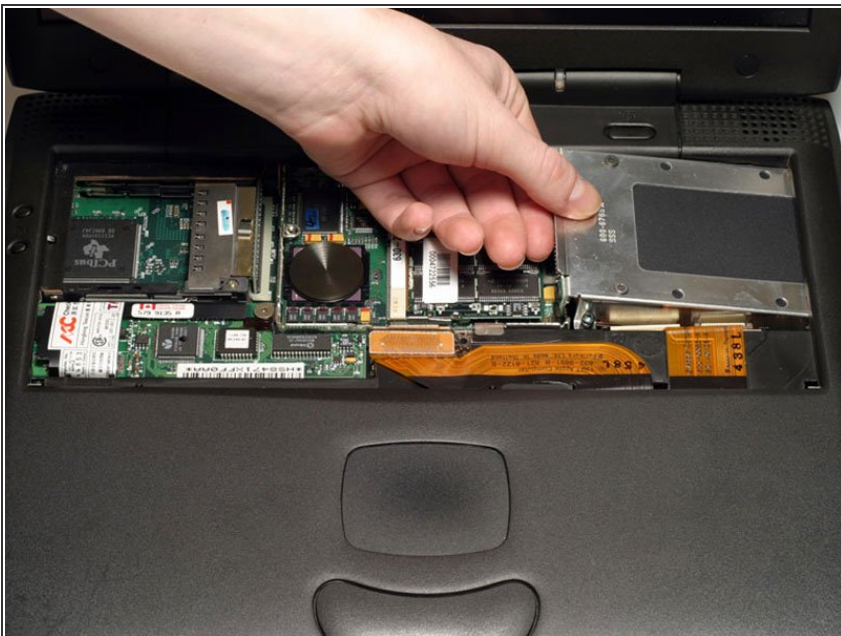
- Grasp the metal handle on the heat shield and pull up and toward yourself.

Step 9 — Hard Drive



- Unscrew, but do not remove, the single Phillips screw from the hard drive bracket.

Step 10



- Grasp the hard drive bracket on the left side and pull up and to the left.

Step 11



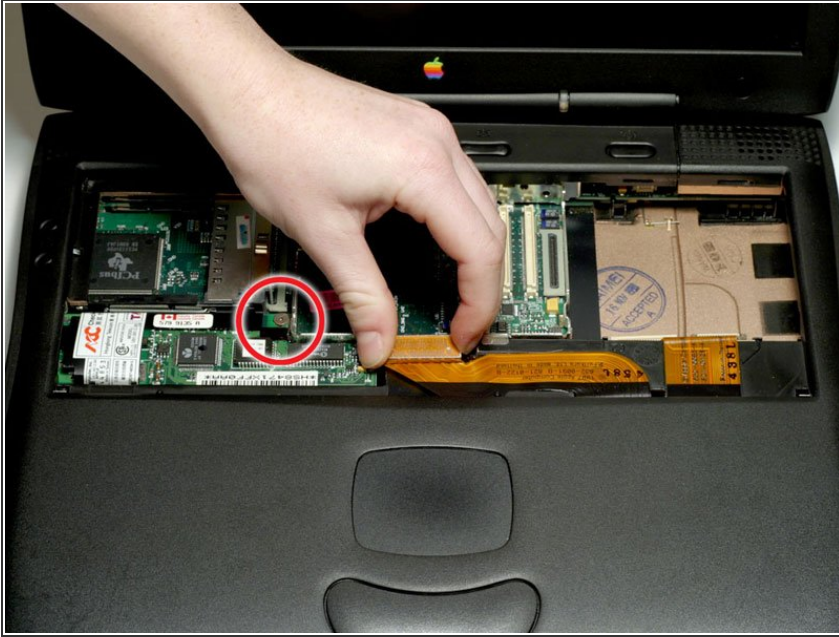
- Your laptop should look approximately like this.

Step 12 — Processor



- Use a spudger, the tips of your fingers, or a flat non-metal tool to pry up the processor's right side.
- Remove the processor by sliding it up and to the right.
- ⓘ The processor and RAM can be removed as a unit. It is not necessary to remove the RAM from the processor.
- ★ There are two tabs on the left side of the processor that fit into slots on the metal framework. Make sure these tabs are in the slots.

Step 13 — Modem



- Remove the single Phillips screw from the modem.
- Disconnect the orange PMU cable by pulling it directly up.

Step 14



- Disconnect the modem from the logic board by lifting up on the right side using a spudger, the tip of your finger, or a flat non-metal tool.
- Remove the modem by sliding it up and to the right.

Step 15



- Your laptop should look approximately like this.

Step 16 — Clutch Cover



- Push the display back so that it lies flat.
- Slip a spudger or your index finger under the clutch cover near the power button and pull upward until you feel it come free.
- Repeat the previous step on the left side.

Step 17



- Lift the clutch cover off by rotating it up and then toward you.

To reassemble your device, follow these instructions in reverse order.