



Nikko La Nera Junior Teardown

It's a teardown of my first radiocontrolled car.

Written By: Federico Barutto





TOOLS:

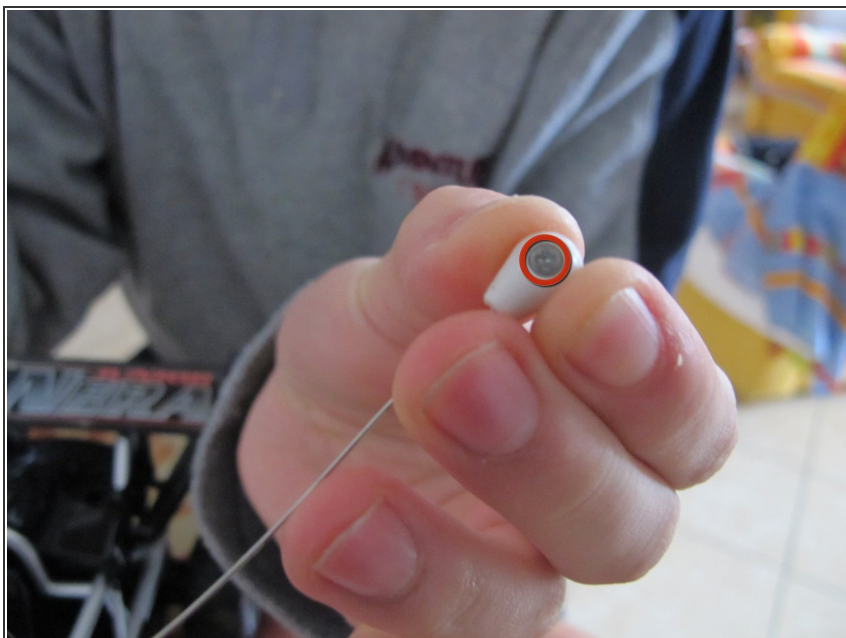
- [Flathead 3/32" or 2.5 mm Screwdriver](#) (1)
 - [64 Bit Driver Kit](#) (1)
-

Step 1 — Nikko La Nera Junior Teardown



- The Car, the Remote Control and a Phillips screwdriver.

Step 2



- Let's start!
- Remove this screw.

Step 3



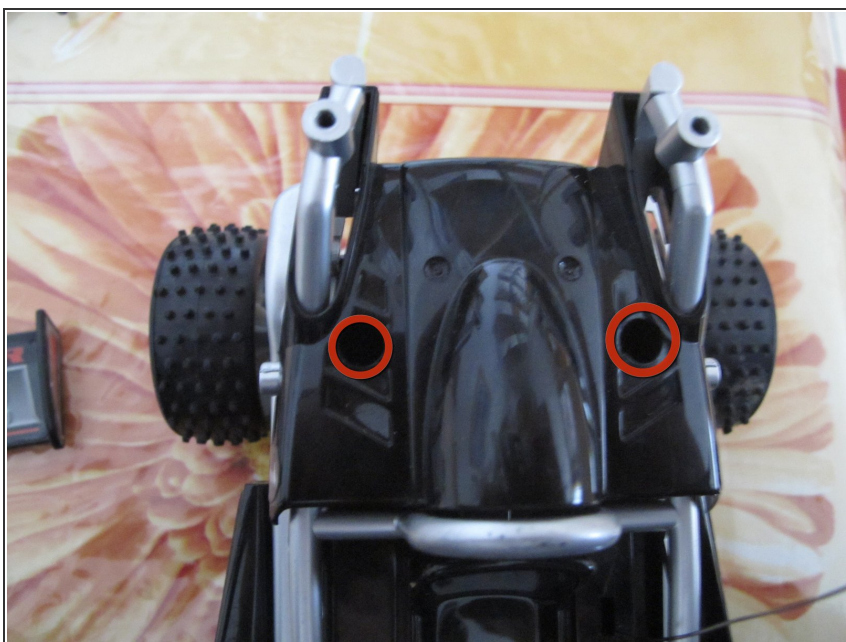
- The rear wing
- Unscrew this black screws
- Remove the wing

Step 4



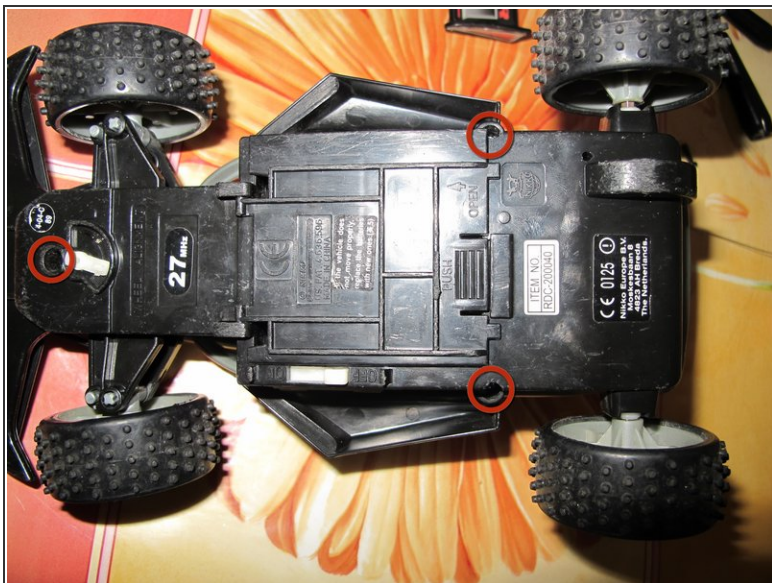
- The Exhausts
- Remove these screws
- Remove the exhausts

Step 5



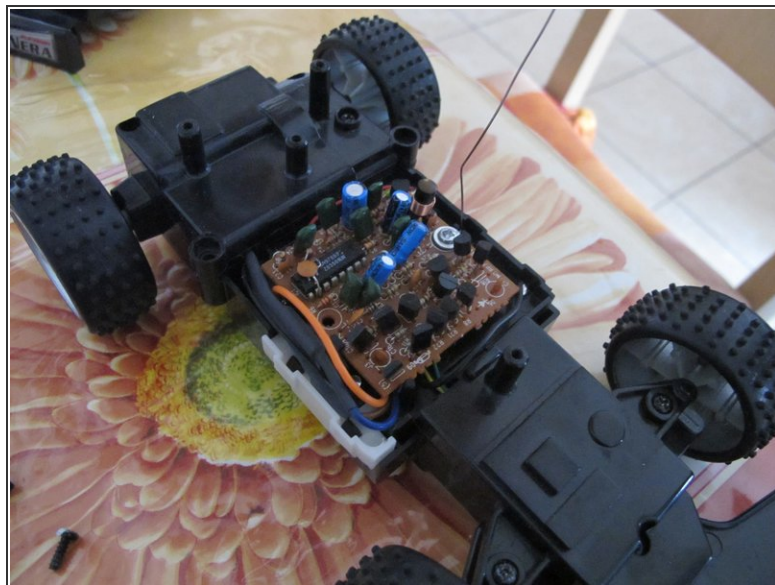
- The Rear Cover
- Remove these screws

Step 6



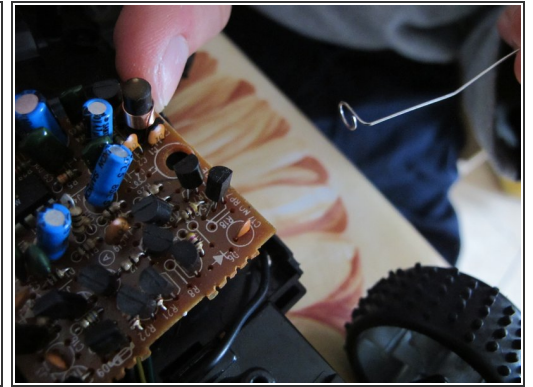
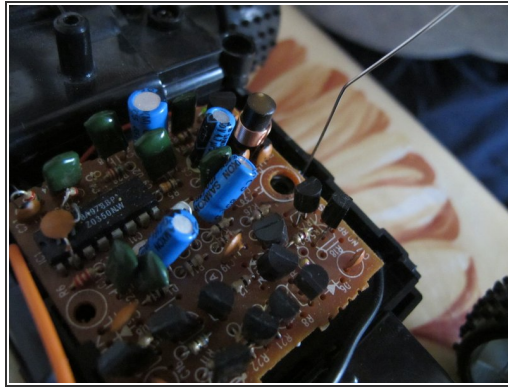
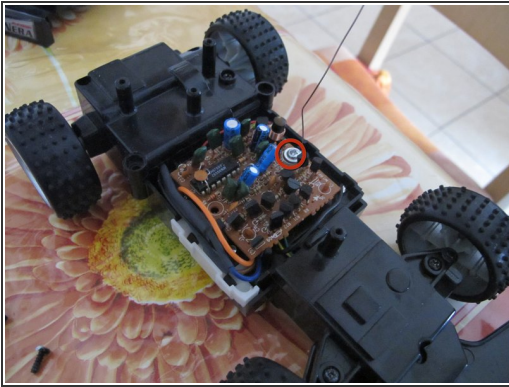
- The "tubular" body
- Flip the car
- Remove these screws.
- Remove the body

Step 7



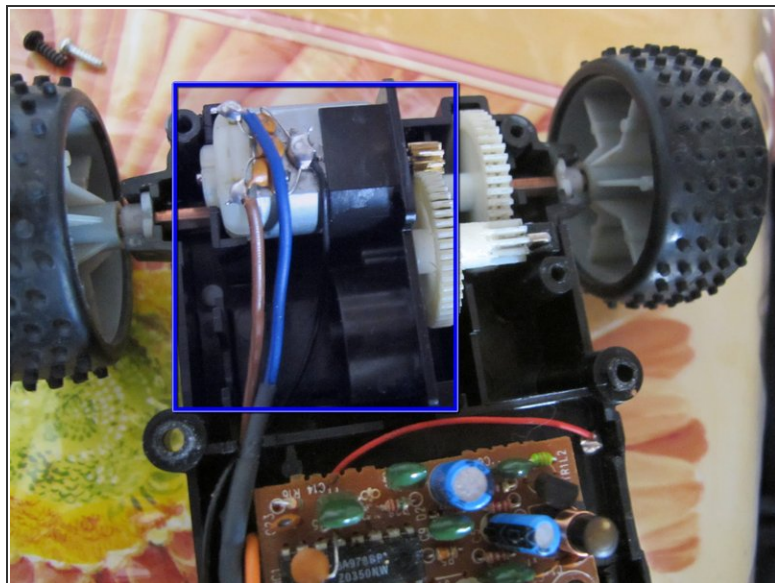
- The seat
- Remove these screws (one of these is back of the seat)
- Remove the seat.

Step 8



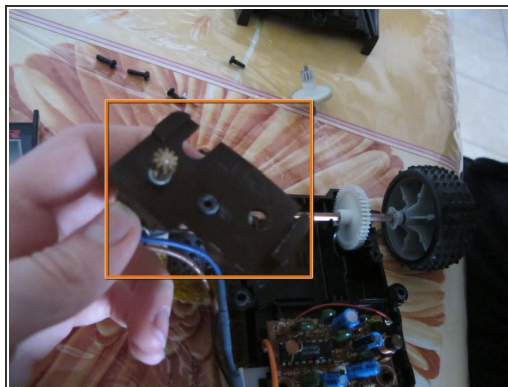
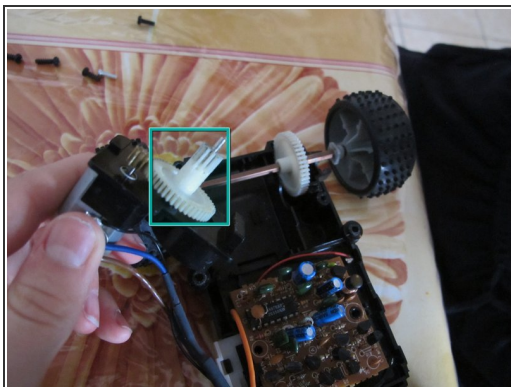
- The antenna
- Remove this screw
- Raise the circuit board
- Remove the antenna

Step 9



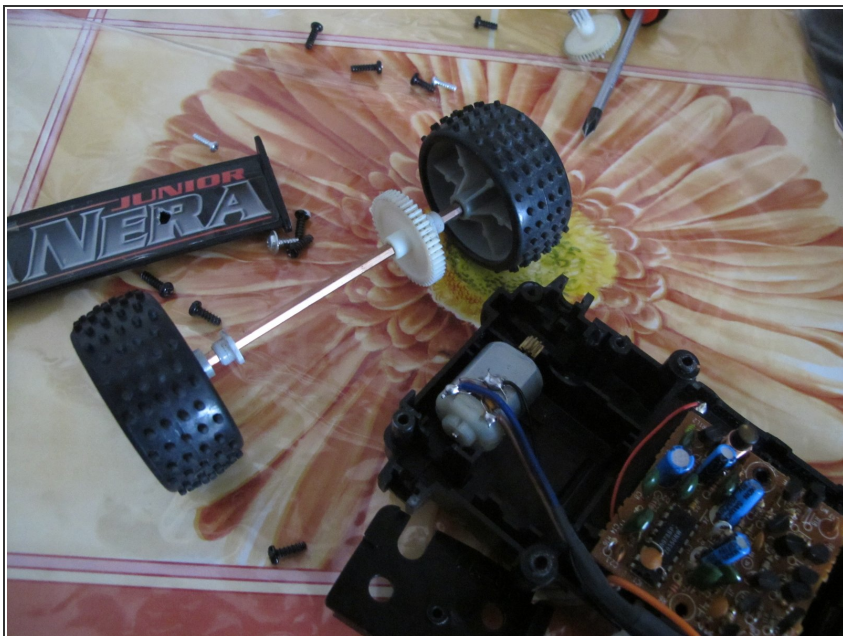
- The "engine"
- Remove these screws
- Remove the gears cover
- Remove the engine block

Step 10



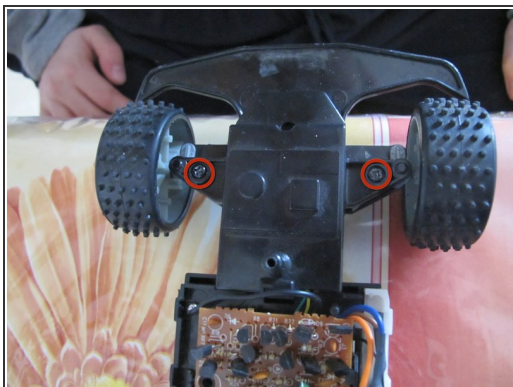
- Remove the gear and his hinge
- Remove this piece of plastic
- The Engine!

Step 11



- Remove the wheels from the car

Step 12



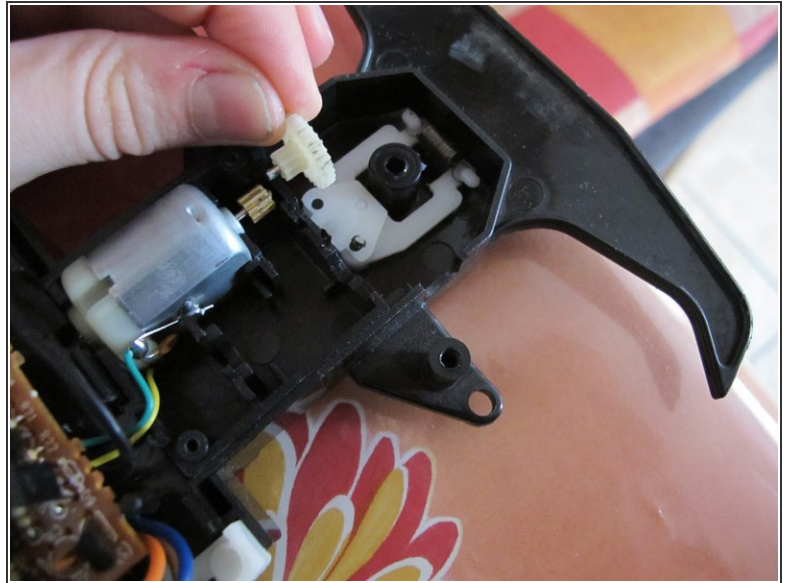
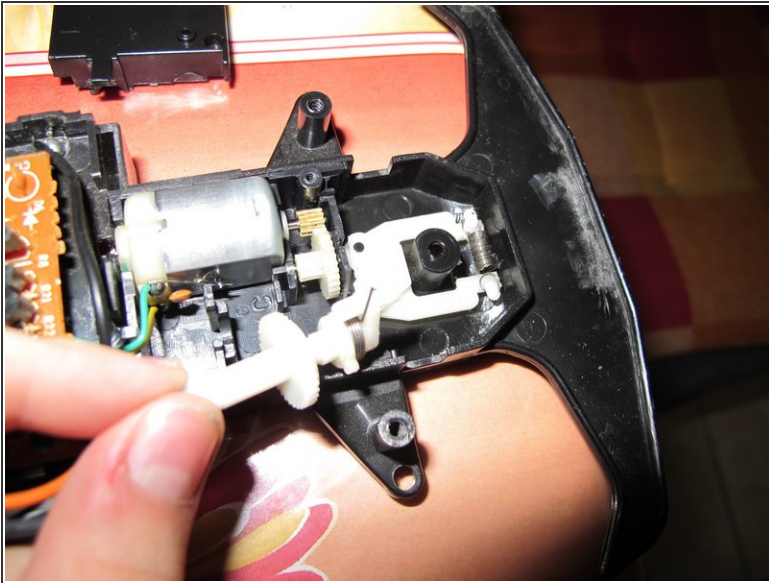
- The Steering Mechanism
- Remove these screws
- Remove the cover
- Lift the wheels

Step 13



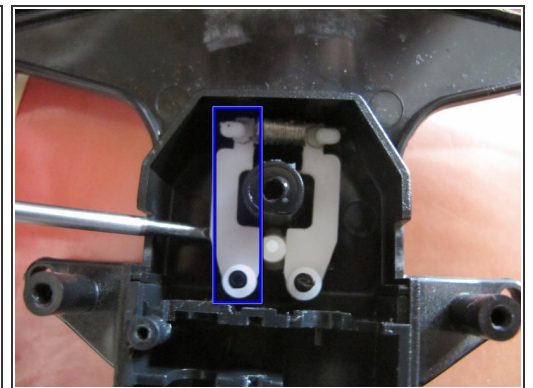
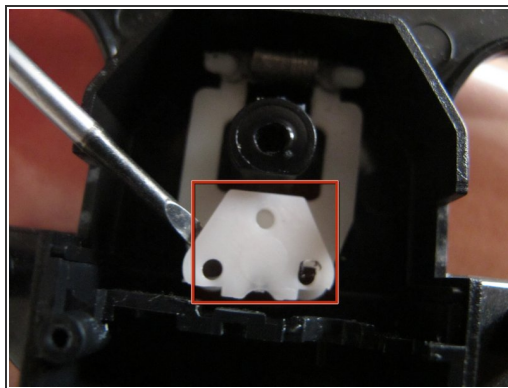
- Remove the steering bar...
- ...the two screws...
- ...and the cover.

Step 14



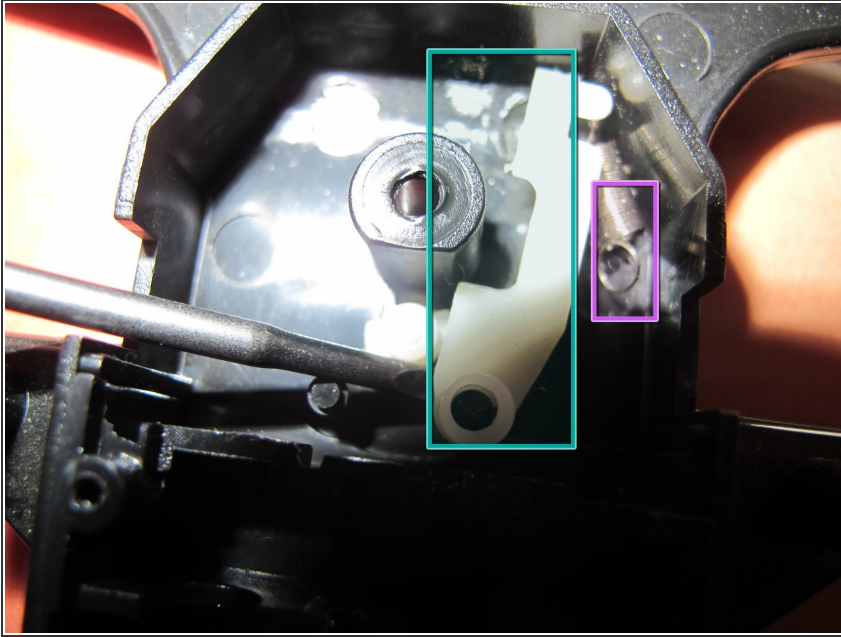
- Remove the first "gear"...
- ...and the second.

Step 15



- Remove the steering motor
 - Remove the plastic cover
- ⚠ Be careful!
- Remove this piece

Step 16



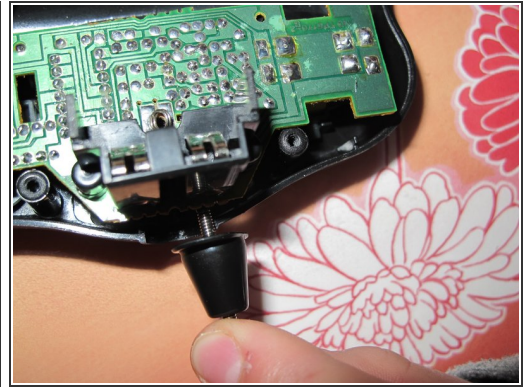
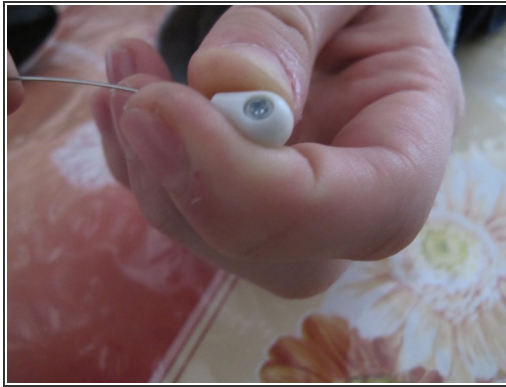
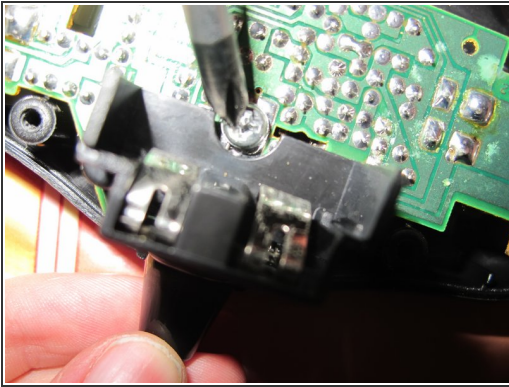
- Remove the second piece...
- ...and the spring.
- Congratulations! The car is torn down!

Step 17



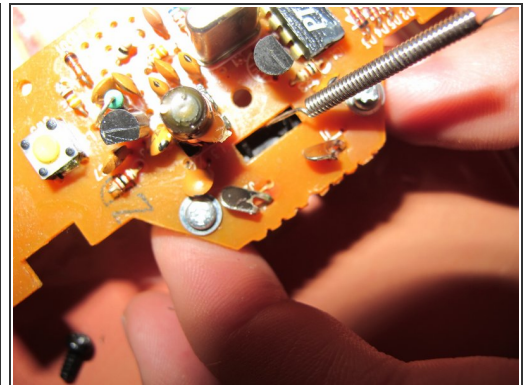
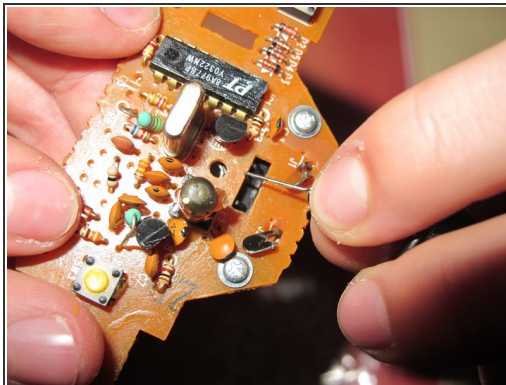
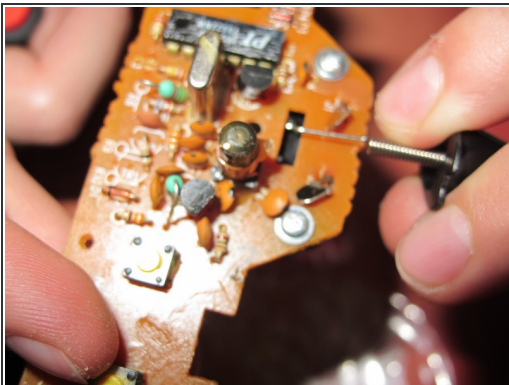
- Let's tear down the remote!
- Remove these screws

Step 18



- Remove the screw in the PCB
- Remove the screw in the piece of plastic at the end of the antenna
- Remove the plastic piece around the beginning of the antenna

Step 19



⚠ Carefully de-route the antenna from the PCB

Step 20



- Detach the two parts of eat key.
- Congratulations! You've ended the teardown!