



HTC Hero Trackball Replacement

Whether your trackball is missing, not responding, or simply no longer rolling this guide will help you get it back in working order.

Written By: Max Brown





TOOLS:

- [iFixit Opening Tools](#) (1)
- [Flathead 3/32" or 2.5 mm Screwdriver](#) (1)
- [T6 Torx Screwdriver](#) (1)



PARTS:

- [OEM HTC Hero Trackball](#) (1)

Step 1 — Back Case



- Remove the back of the phone by pushing firmly with your thumbs up towards the camera.
- Remove both the battery and the SD card (Press SD card in to release)
- Locate and remove the four Torx screws highlighted in the photo, with the phone laying face down on your work space.

Step 2



- **Carefully** pry the inside back cover from the device using an appropriate size plastic opening tool or small flathead screwdriver.
- Insert the flat end between the back and front enclosure, working your way around the rim.

Step 3



- **Gently** depress and release the small plastic tabs around the rim in the front enclosure, highlighted here.

❗ It is best to start with the tab found on the top center of the phone, as it is easiest to locate.

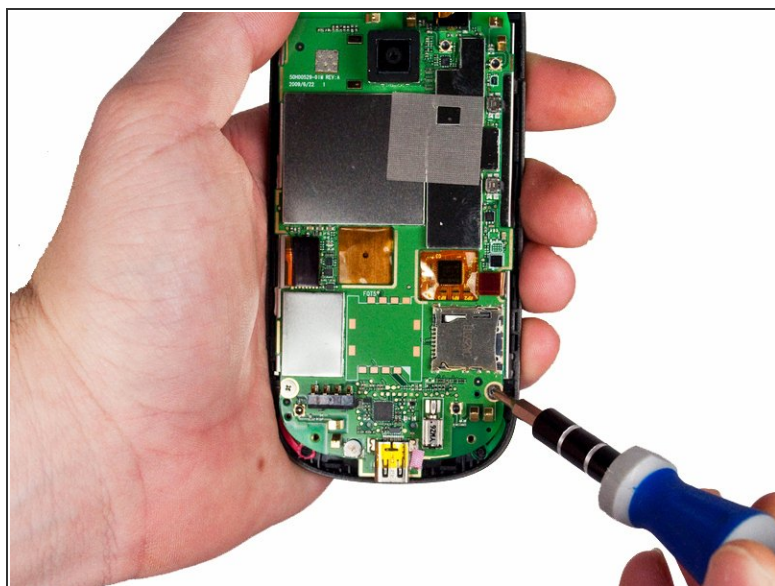
Step 4



- **Carefully** separate the front and back enclosures once all of the clips have been disengaged.

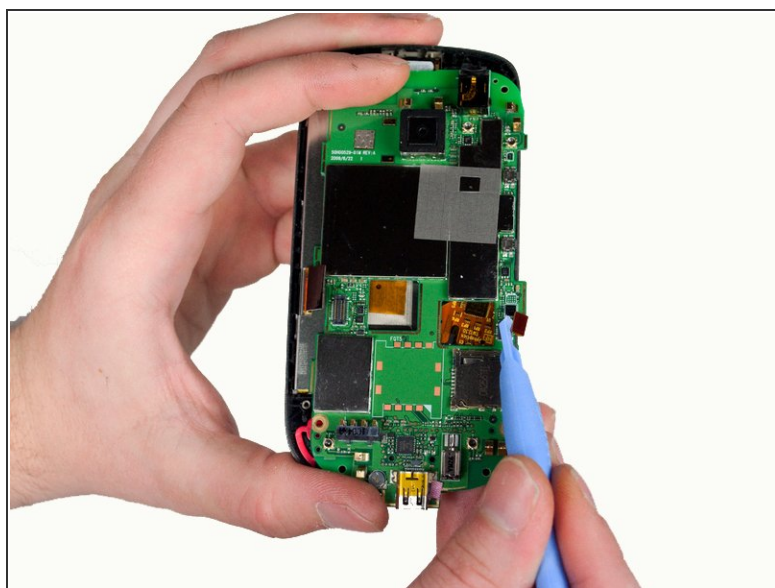
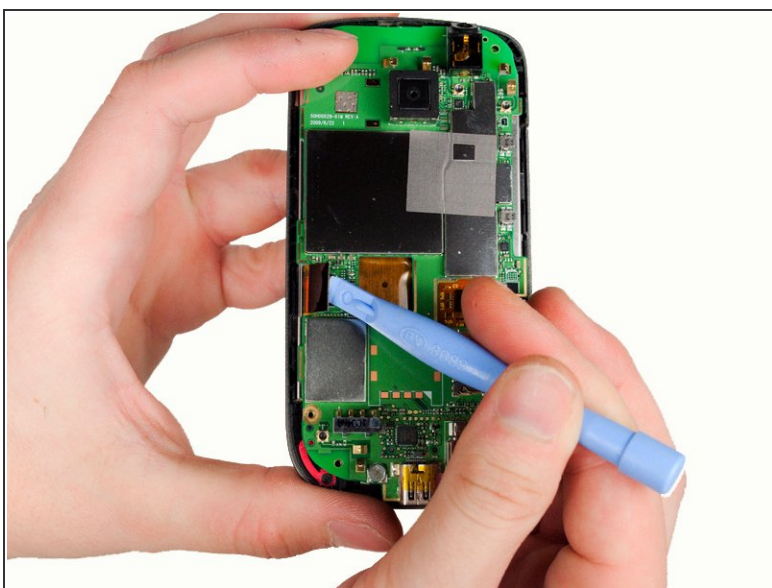
⚠ Be sure to not separate too quickly or you risk breaking an attached tab.

Step 5 — Trackball



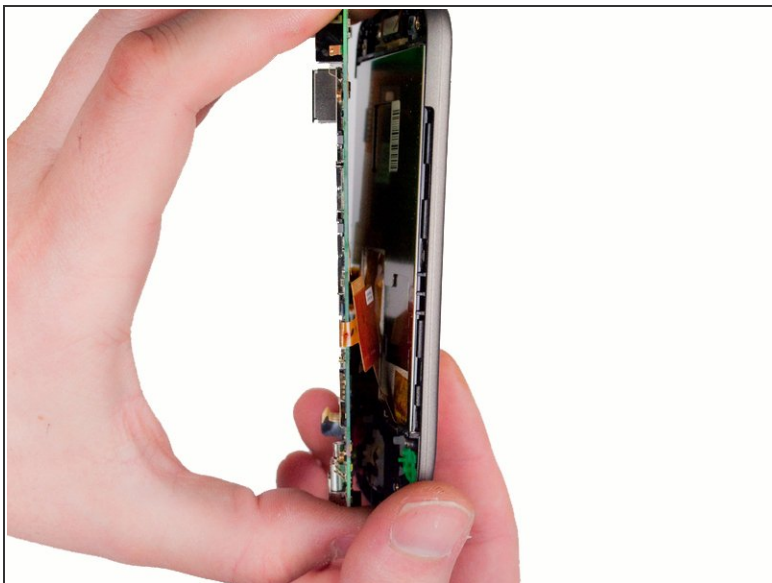
- Remove the two screws near the bottom of the motherboard with a Phillips head screwdriver.

Step 6



- **Gently** pull off the ribbons holding the sides of the motherboard to the front enclosure.

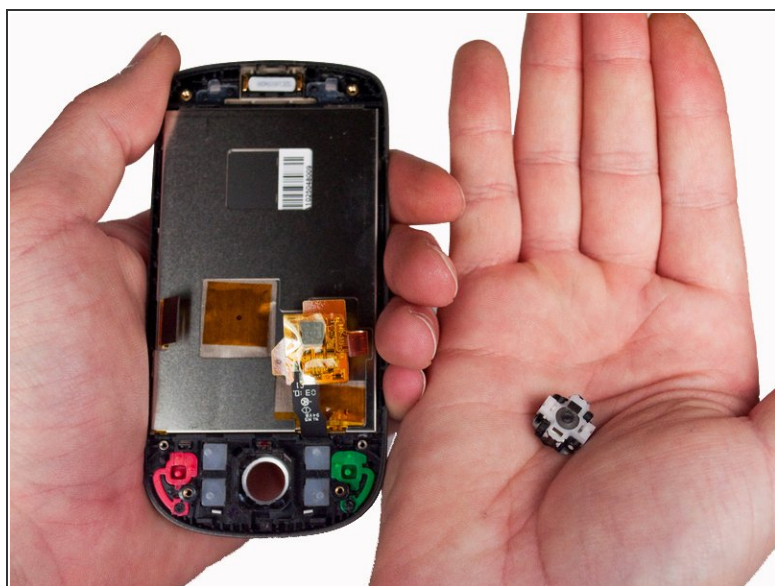
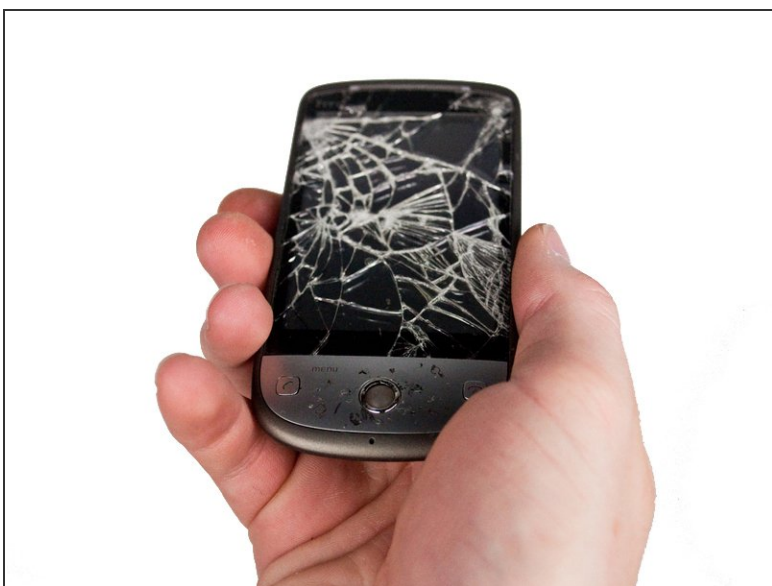
Step 7



- Remove the motherboard from within the front enclosure.

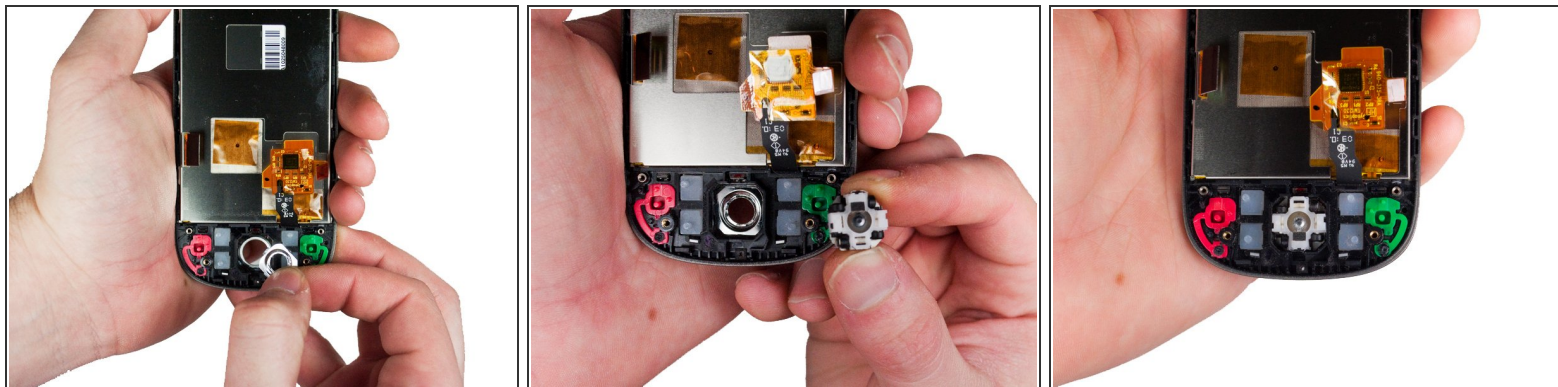
⚠ Be **careful** when pulling the ribbons off the motherboard as they may rip or break.

Step 8



- Tilt the inside of the front enclosure towards your cupped palm to remove the trackball and it's enclosure will fall out.

Step 9



- Position the phone off of the edge of the table and insert the replacement part by inserting the bevel then the trackball into the hole.

☞ Make sure the two plastic pins on the trackball bevel are oriented horizontally.

To reassemble your device, follow these instructions in reverse order.