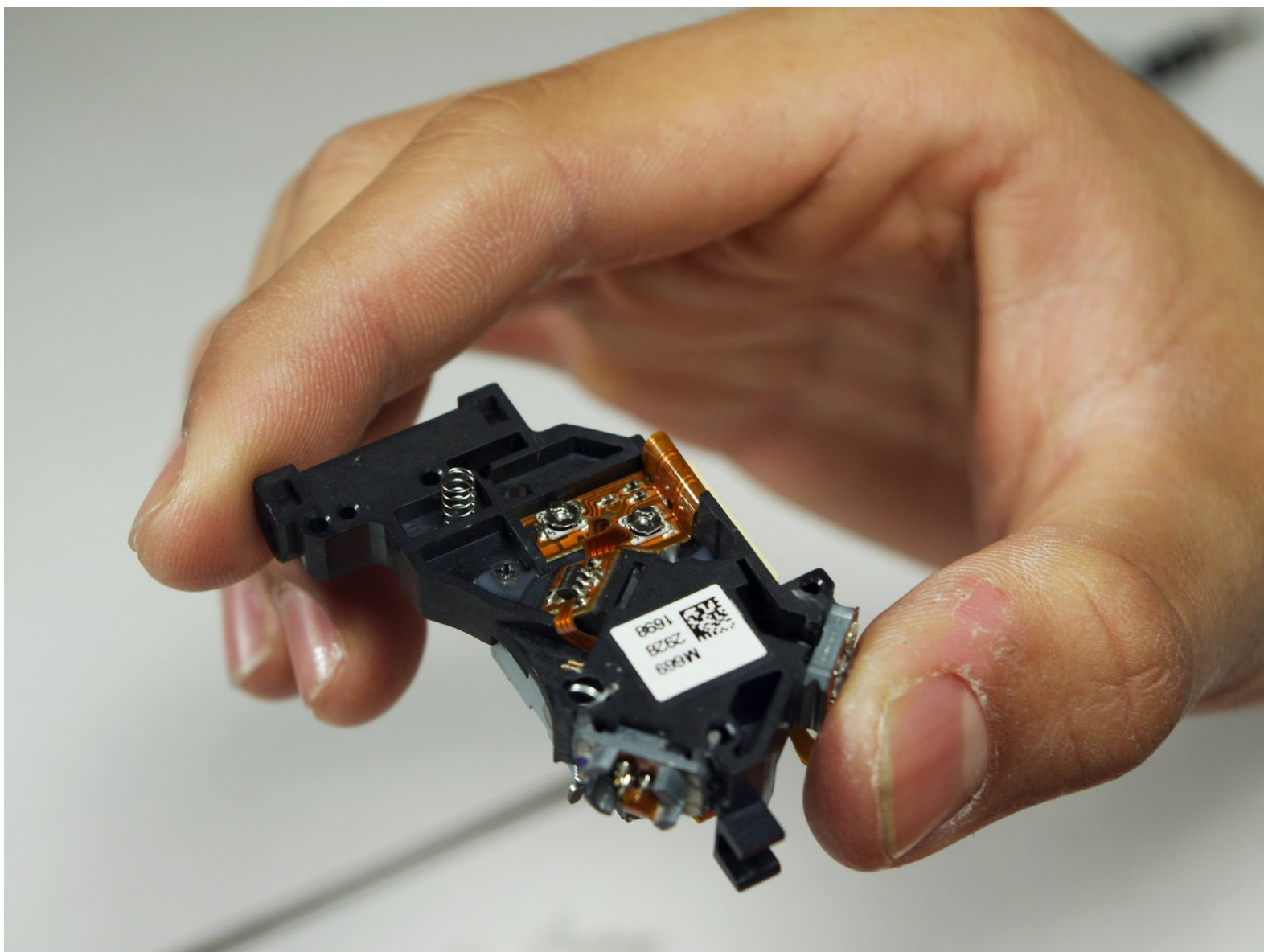




# Coby DVD209 DVD Laser Reader Replacement

This guide will show you how to install the laser that reads DVD's.

Written By: Yufay Chow





## TOOLS:

- [Phillips #1 Screwdriver](#) (1)
- [iFixit Opening Tools](#) (1)



## PARTS:

- [Laser Disk Reader](#) (1)

## Step 1 — The bottom portion of the DVD player



- Press the eject button to view the laser inside.
- Using the blue plastic tool and the tweezers, remove the ribbon cable.

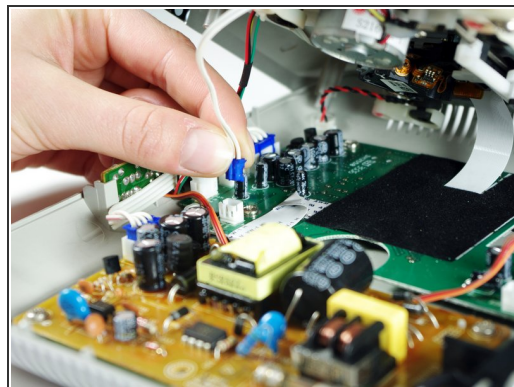
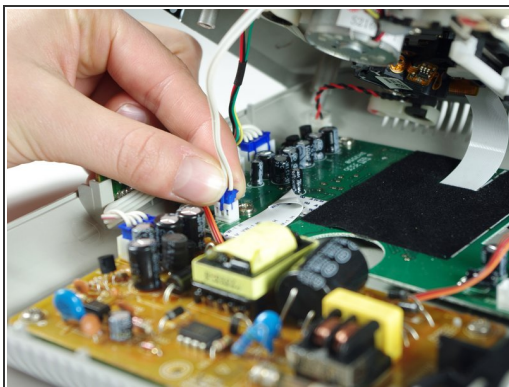
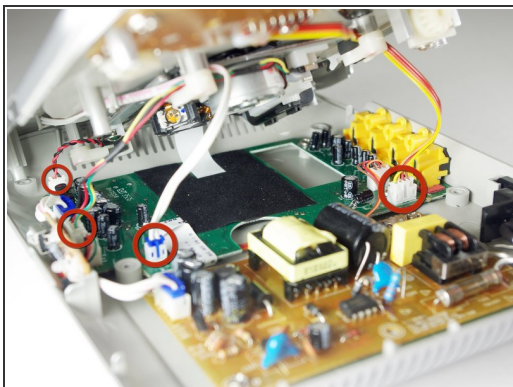
## Step 2




- Remove the six 1cm screws on the bottom of the device with the Phillips #1 screwdriver.
- ⚠ Do not lift the top of the DVD player too quickly because there are wires attached on the inside.
- Pry the top of the device open from the right side where the buttons are located.



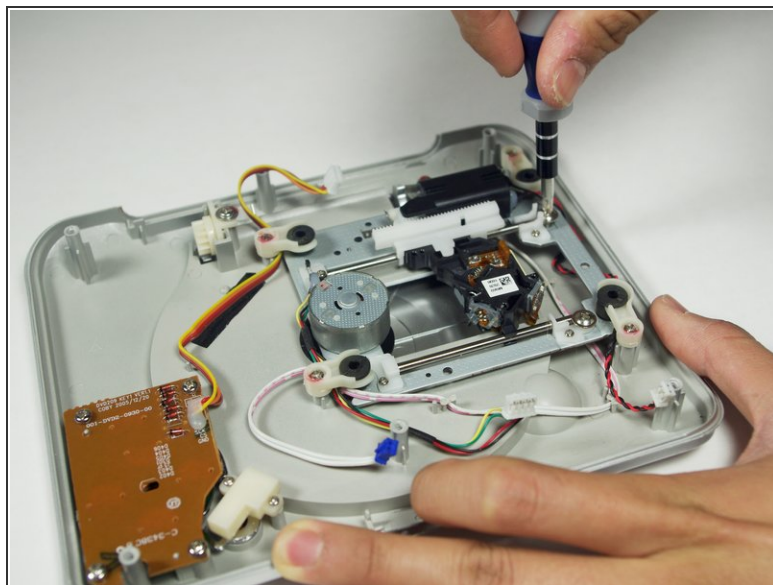
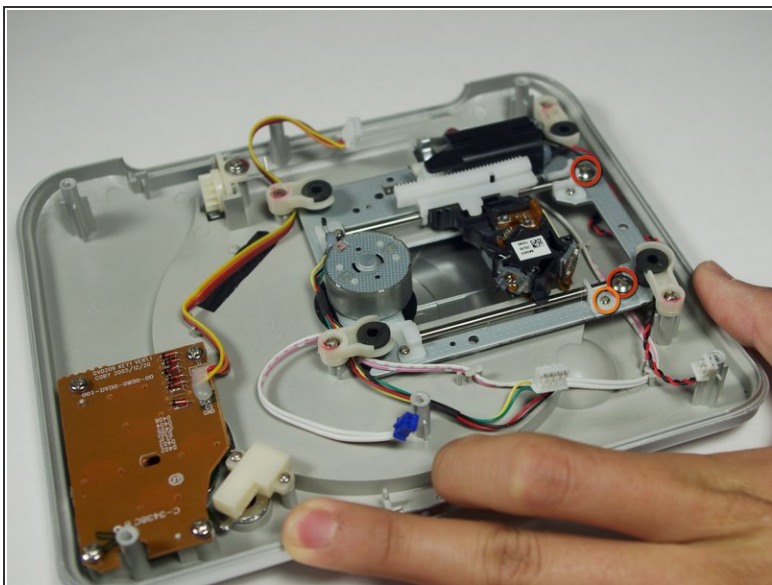
## Step 3



 When pulling the ribbon cables out, make sure not to pull by the wires, as this can cause damage to them.

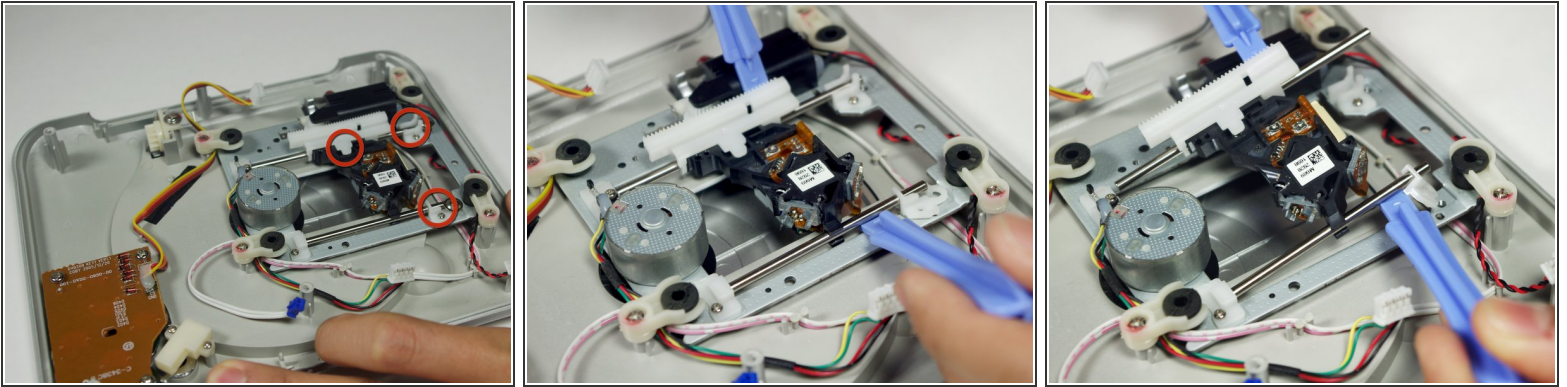
- Pinch the plastic adapter with two fingers to remove the wires circled in red from the circuit board.


## Step 4 — DVD Laser Reader




- Remove the two 6.35mm screws circled in black with a #1 Philips head screwdriver.
- Remove one 4mm screw circled in red with a #1 Philips head screwdriver.

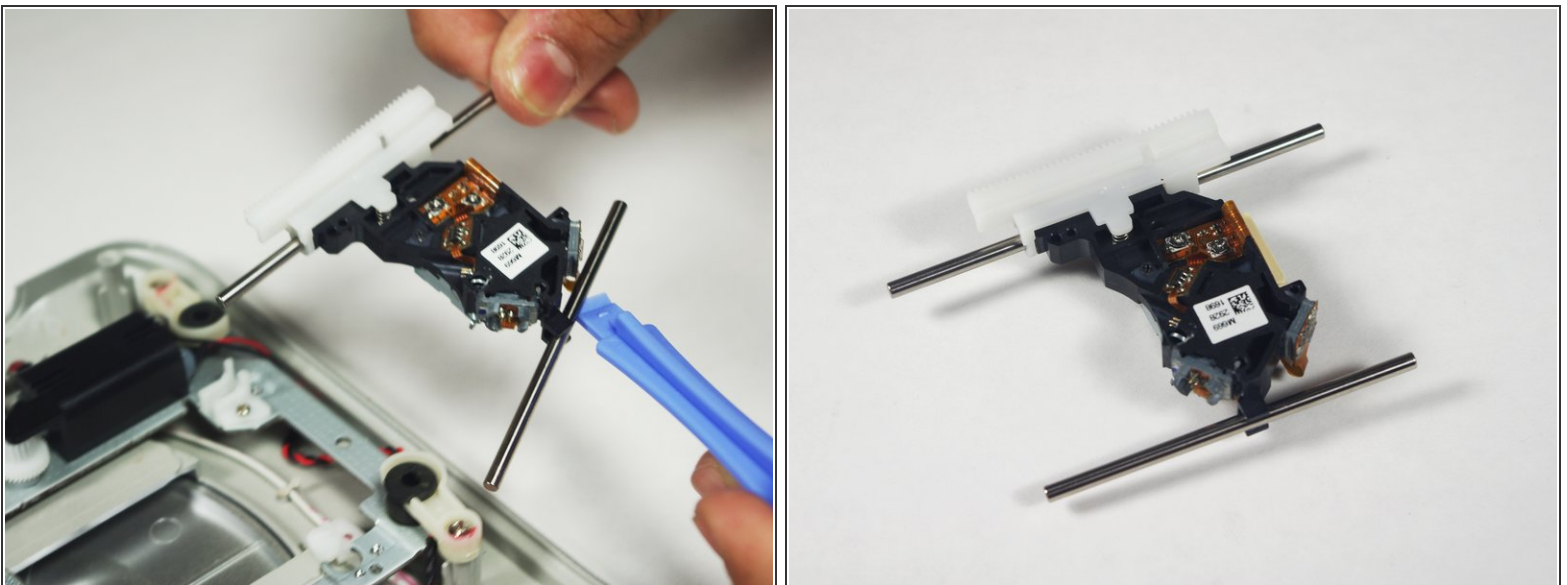
## Step 5




 There are three small 4.5mm springs that can be easily lost. Be careful when lifting up the railing assembly to make sure you don't lose them.

- The location of the springs are circled.
- Using two plastic tool removers, lift the two rails up at an angle. Keep the rods angled as shown.
-  The rail at the top of the picture is 82mm and the rail at the bottom of the picture is 65mm.

## Step 6

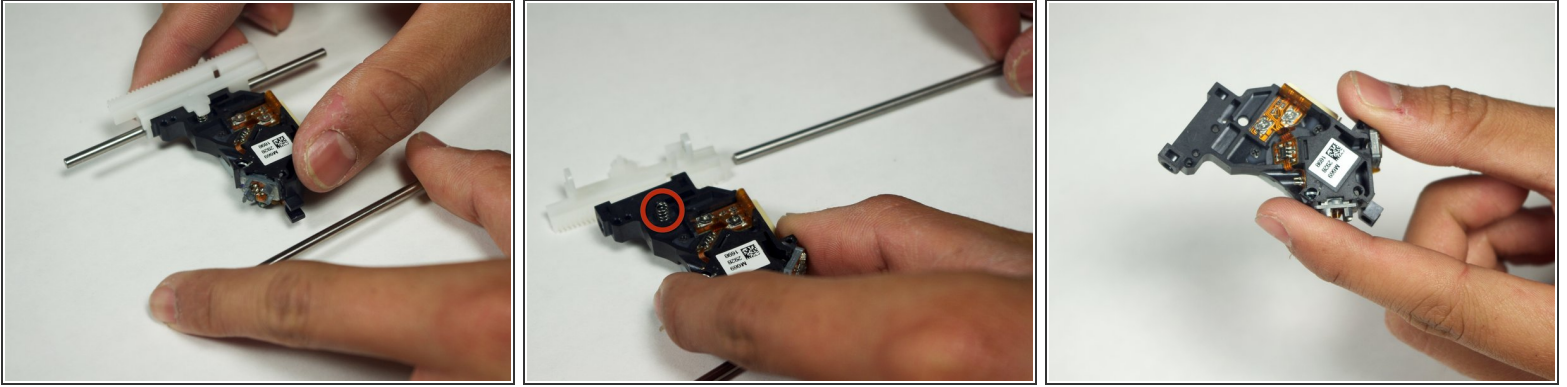


 Be careful not to lose the spring at the top of the laser.

- Lift the laser assembly out of the fixture.



## Step 7



- Remove the rails from the disk reader.
- Once the top rail is removed, the white gear will come off and under it will be one of the springs.

To reassemble your device, follow these instructions in reverse order.