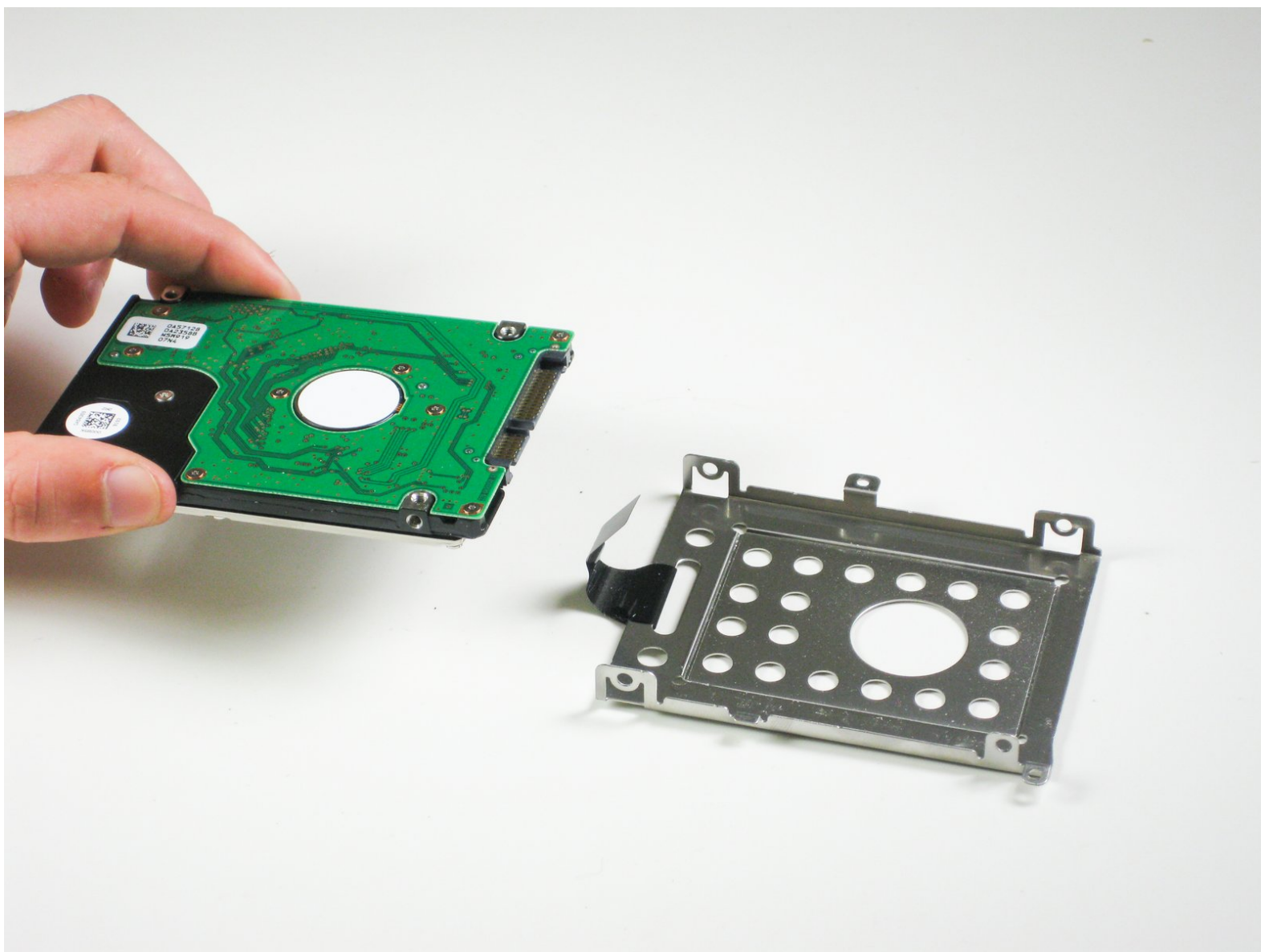




Asus Eee PC 1005HA Hard Drive Replacement

Use this guide to replace or upgrade the hard...

Written By: Mitchell Cesare



INTRODUCTION

Use this guide to replace or upgrade the hard drive in the Asus Eee PC 1005HA.



TOOLS:

- [Phillips #1 Screwdriver](#) (1)
- [iFixit Opening Tool](#) (1)



PARTS:

- [Crucial MX500 1 TB SSD](#) (1)
- [Crucial MX500 250 GB SSD](#) (1)
- [Crucial MX500 500 GB SSD](#) (1)
- [2 TB SSD](#) (1)

Step 1 — Battery



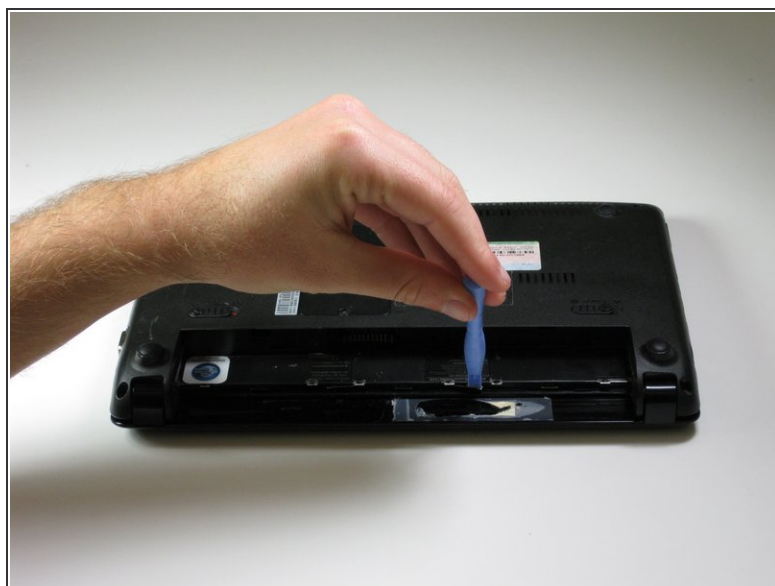
- Lay the laptop upside down.
- Locate the two battery lock tabs.

Step 2



- Slide the tabs outward to unlock the battery.
 - ⓘ The left tab will remain unlocked, while the right tab must be held.
- Holding the right tab open, slide the battery out of the laptop.

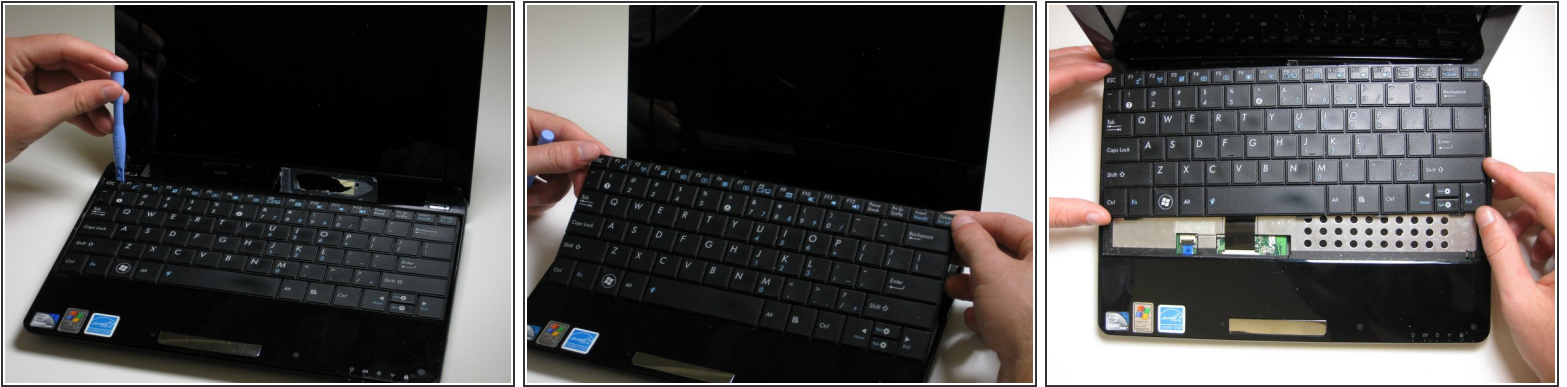
Step 3 — Keyboard



- Use a plastic opening tool to pull up the four metal latches in the battery cavity that is located on the bottom of the laptop.

⚠ Do not apply too much pressure. The latches can not be removed and will bend if forced.

Step 4



- Flip the laptop over, and open the display.
- Use a plastic opening tool to lift the edge of the keyboard that is nearest to the screen.
- Gently lift the keyboard and slide it toward the screen.

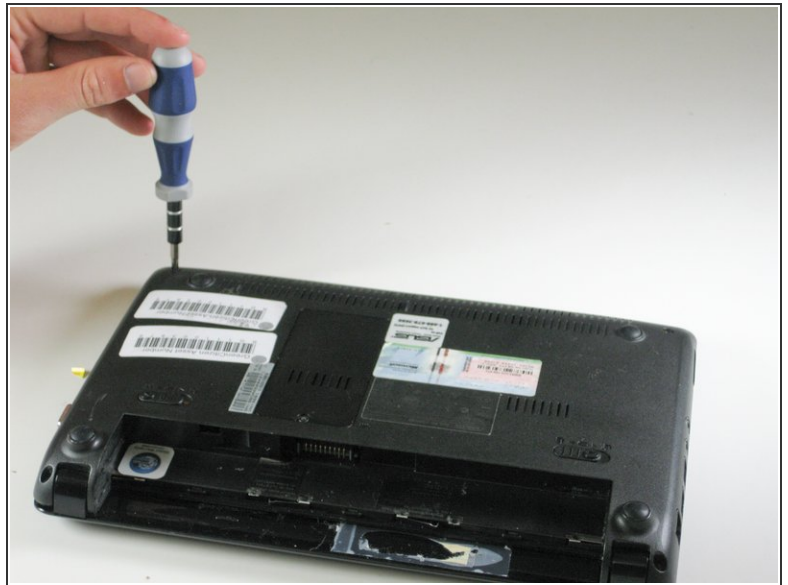
⚠ Do not remove the keyboard completely. This can damage the ribbon cable connecting the underside of the keyboard to the laptop.

Step 5



- Use a spudger tool to release the tabs on the ribbon cable ZIF connector that is attached to the underside of the keyboard.
- ⓘ Depending on the model, the tabs on this ZIF connector will either flip up toward the display or push out toward the display.
- Once the ZIF connector tabs have been released, remove the keyboard.

Step 6 — Hard Drive



- Flip the laptop over.
- Remove the four 5.65 mm screws from the bottom of the case.
- Loosen the captive screw in the RAM compartment cover.

Step 7



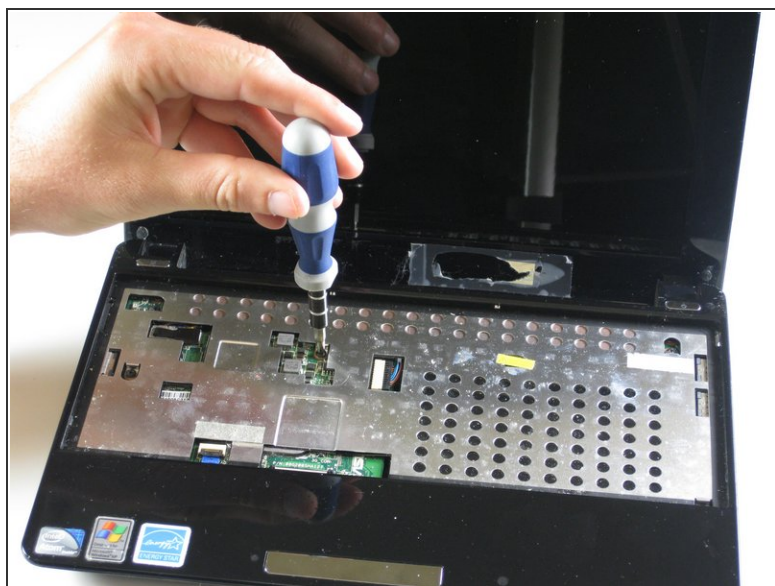
- Remove the panel covering the RAM.
 - Pull the two RAM retaining arms away from the center of the RAM chip.
 - Gently pull the RAM chip out of its socket.
- i** This photo shows the battery still attached, but it should be removed prior to removing or replacing the RAM.

Step 8



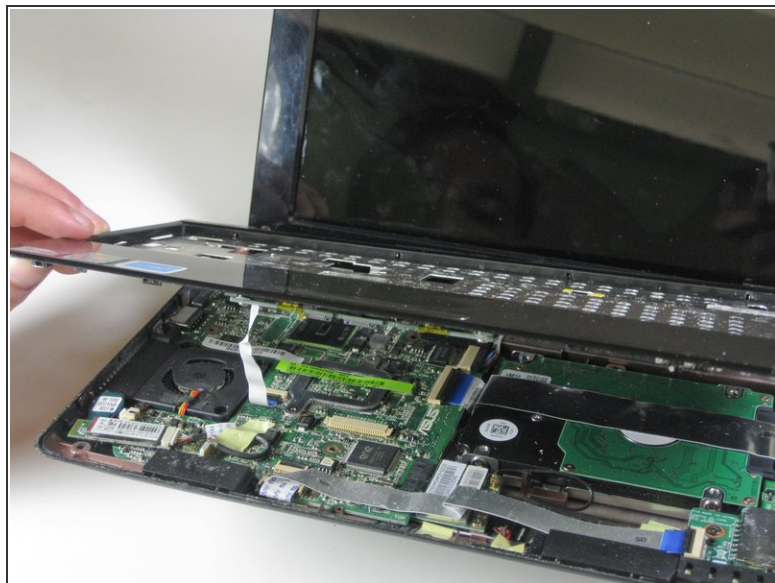
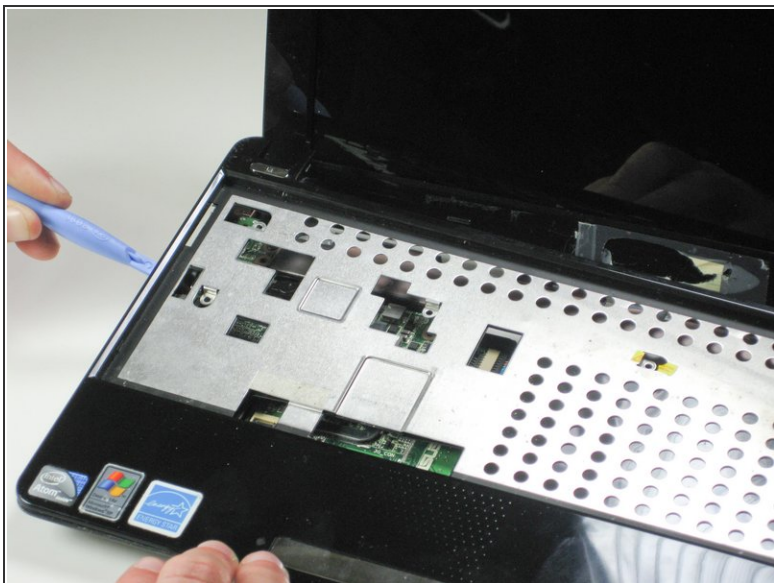
- Remove the single 6.65 mm screw next to the RAM socket.

Step 9



- Flip the laptop back over and open the display.
- Remove the six 5.5 mm screws from the metal plate beneath the keyboard.

Step 10

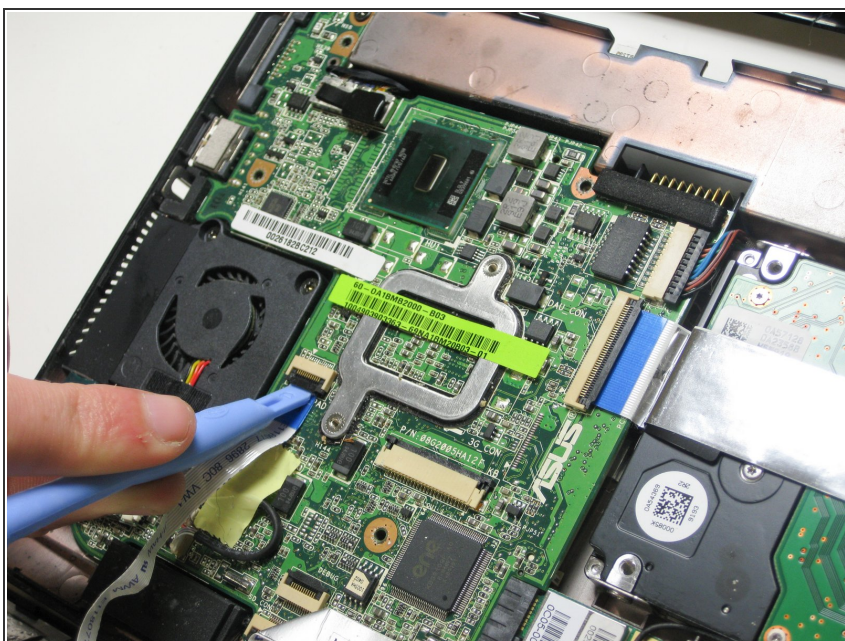


- Using a plastic opening tool, carefully detach the five plastic clips securing the upper case.

⚠ There are two small LEDs in the top edge of the lower casing, near the bottom right of the laptop. Be careful not to damage them as you pry open the plastic clips.

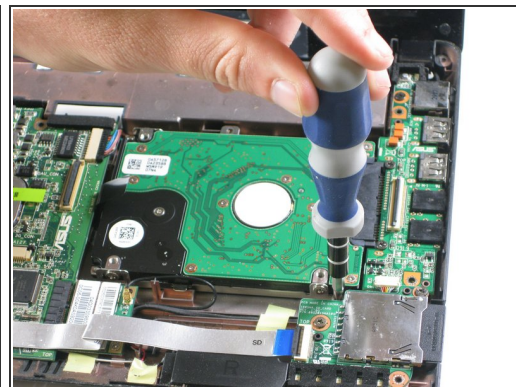
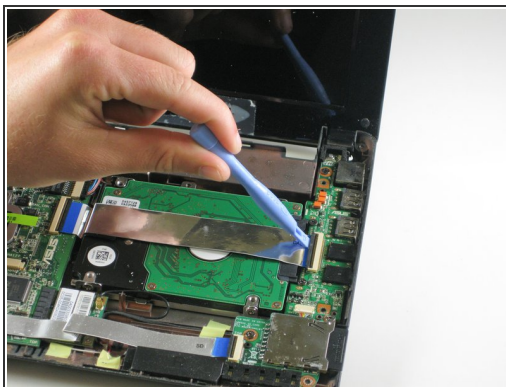
- Carefully lift the upper case and flip it towards the front of the laptop.

Step 11



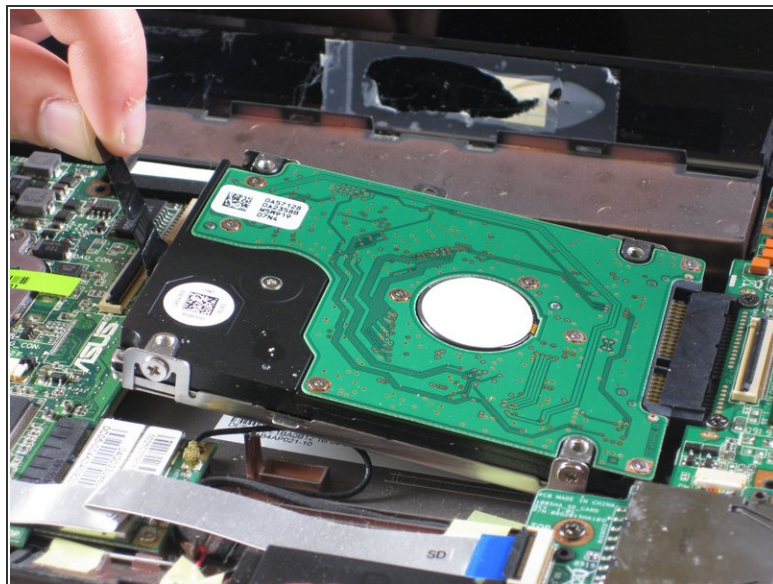
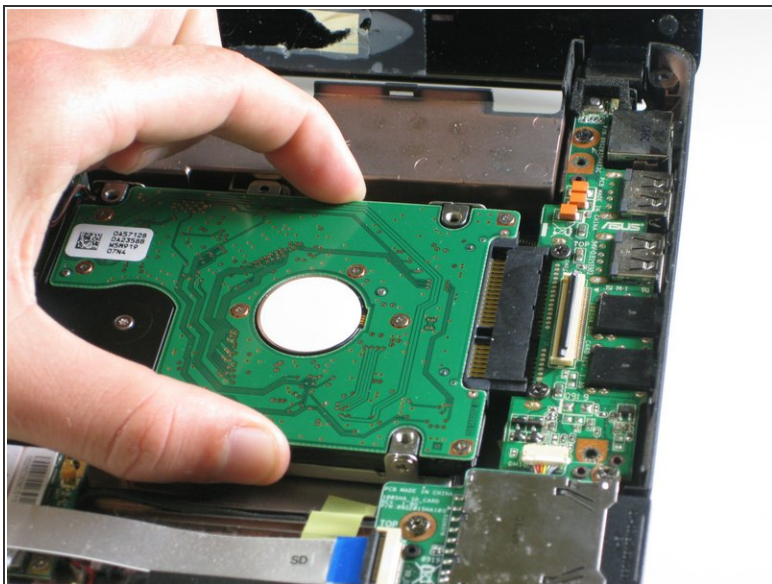
- Flip up the retaining flap on the trackpad ribbon cable ZIF connector.
- Slide the trackpad ribbon cable from its socket.

Step 12



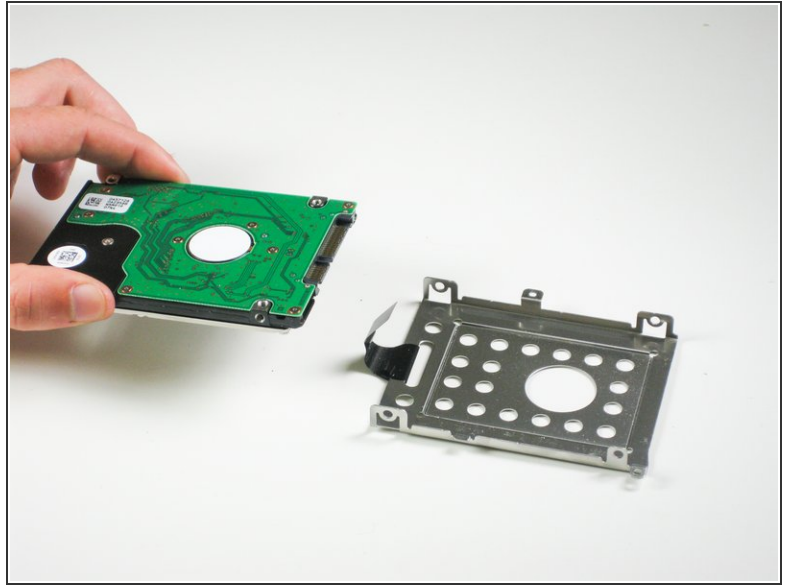
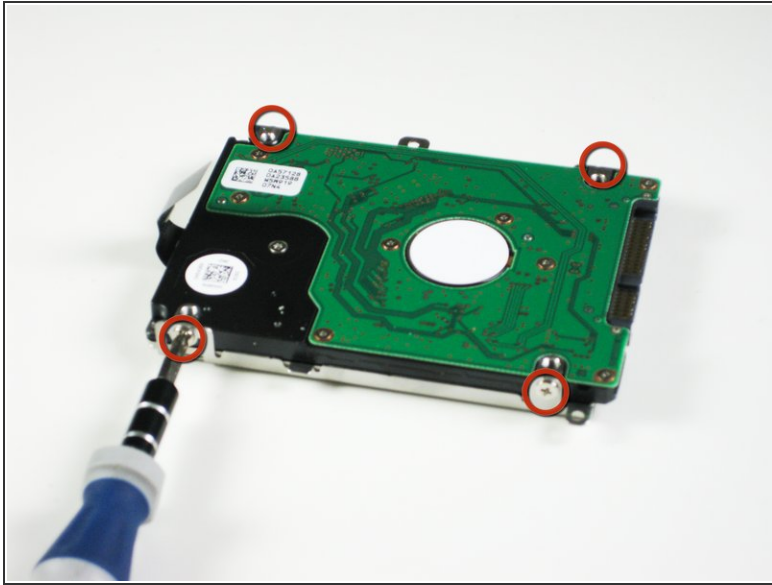
- Flip up the retaining flaps on each end of the I/O board ribbon cable ZIF connector.
- Carefully pull the the I/O board ribbon cable from its sockets.
- Remove the two 4.6 mm screws holding the hard drive in place.

Step 13



- Carefully slide the hard drive away from its socket.
 - Use the attached pull tab to lift the hard drive up and out of the case.
- ☒ When reinstalling the hard drive, be sure that the WiFi antenna cable (visible as a black loop below the disk in the 2nd photo) is not trapped or pinched beneath the drive.

Step 14



- Remove the four 3.6 mm screws from the hard drive tray.
- Remove the hard drive from the tray.

To reassemble your device, follow these instructions in reverse order.