



# Sony DSC-RX100MA Screen Replacement

This guide will show you how to replace the LCD screen of the camera.

Written By: KC Egger



---

## INTRODUCTION

If your camera's screen isn't working properly, you may need to replace it. Follow this guide to do so!

---



### TOOLS:

- [Phillips #0 Screwdriver](#) (1)
  - [iFixit Opening Tools](#) (1)
-

## Step 1 — Back Cover



- Remove battery by sliding the tab to open the cover

## Step 2



- Using the screwdriver, remove all screws (black 2.5mm) from outermost layer of the assembly.

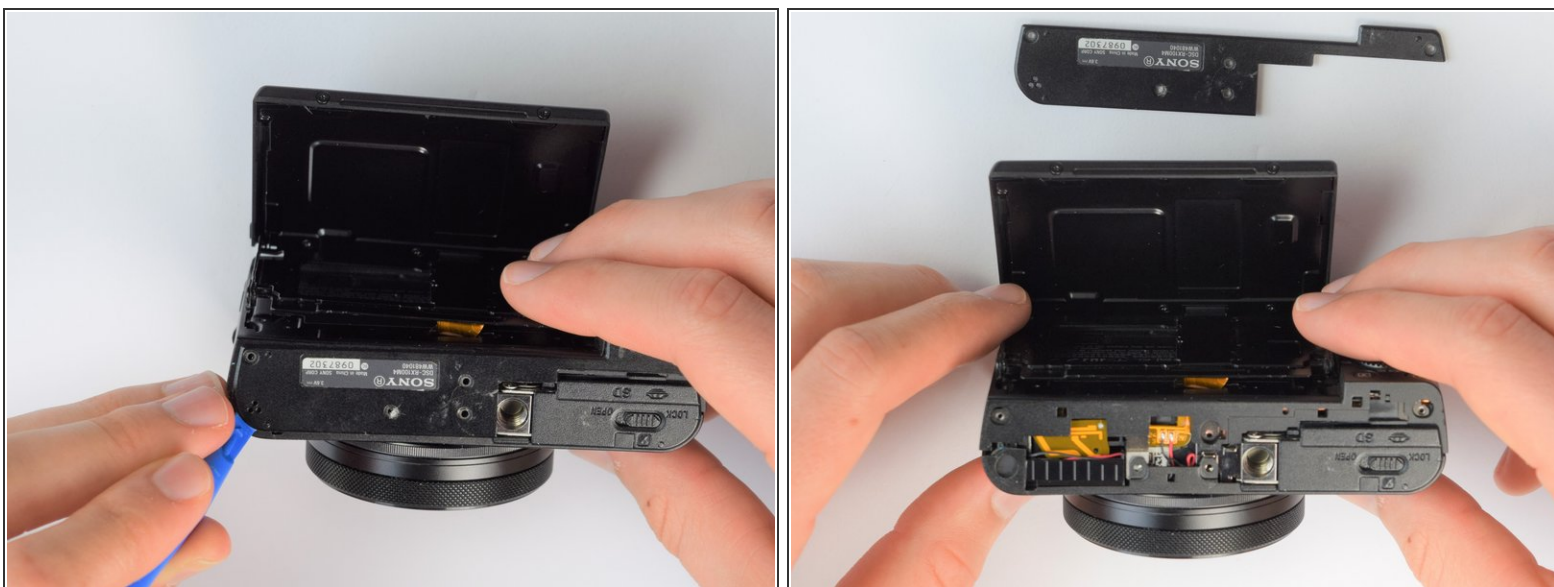
***i*** All screws in the camera can be removed with the PH 0 driver head.

### Step 3



- Also using the screwdriver, remove screws (black 1mm) underneath articulated LCD screen.
- Remove the marked 2.5 mm screws with the screwdriver

### Step 4



- Using the plastic opening tools, carefully pry off the bottom plate.

⚠ Do not pull too hard as you may break the plastic casing.

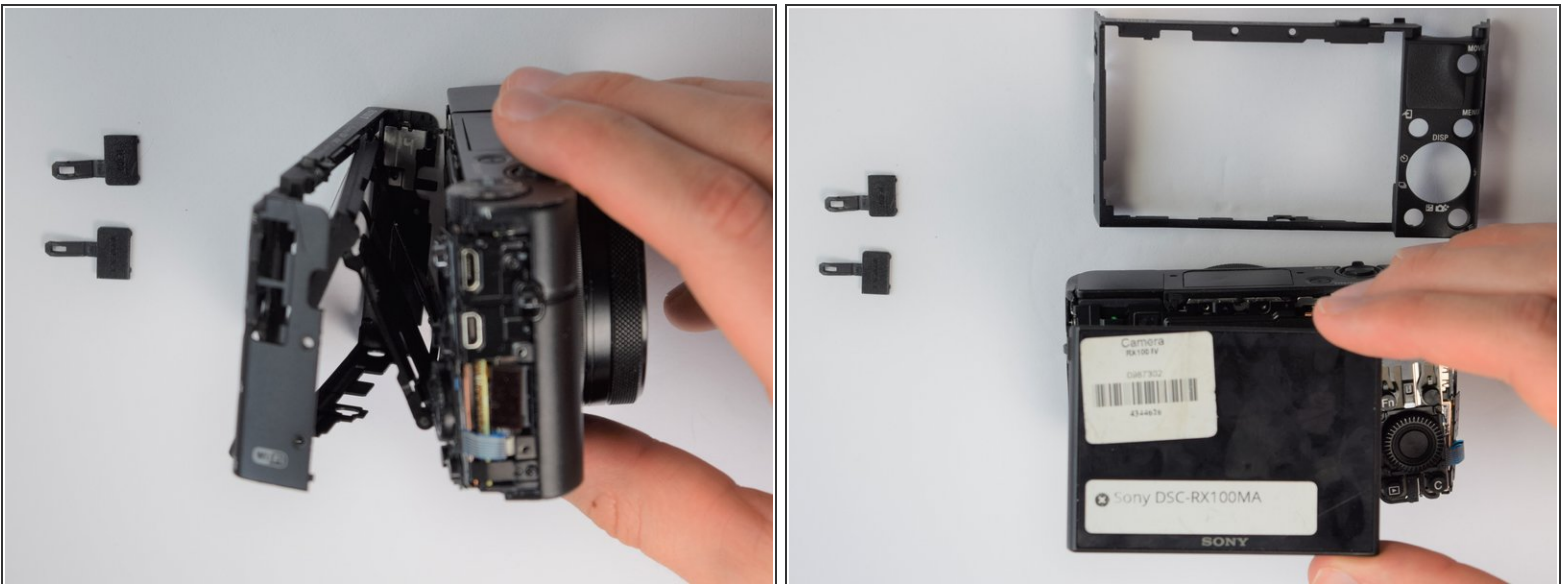


## Step 5



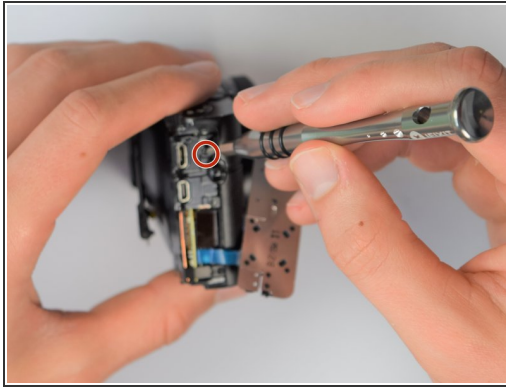
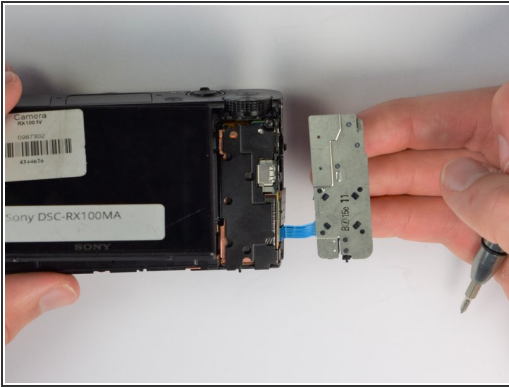
- Using the same plastic opening tools, separate the screen and back assembly from the front portion of the camera
- Once the back assembly is slightly detached, pull the media covers for the HDMI and Multimedia ports

## Step 6



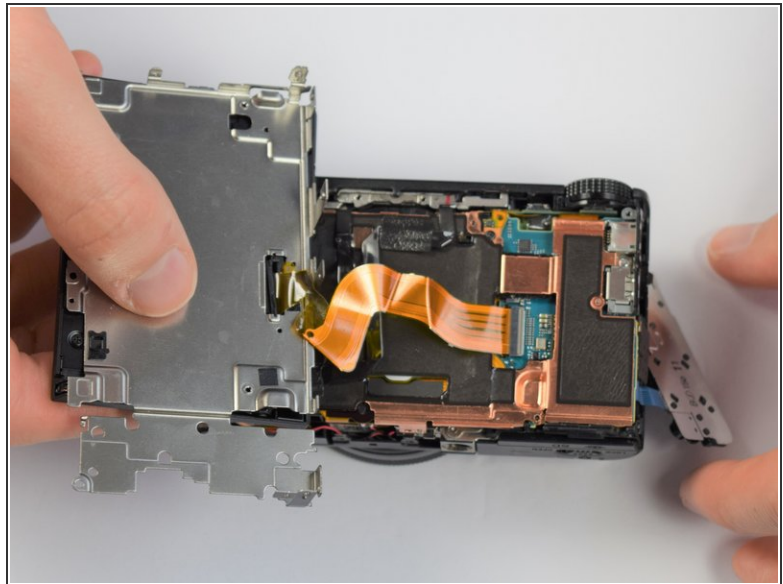
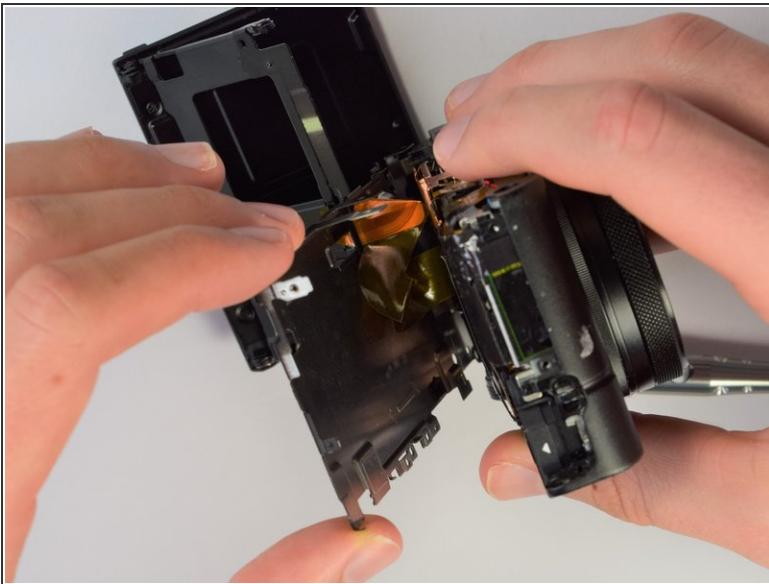
- Remove the back cover

## Step 7 — Screen



- Move side panel to get access to screws
- Remove two screws (black 2.5mm) with PH #0 screwdriver

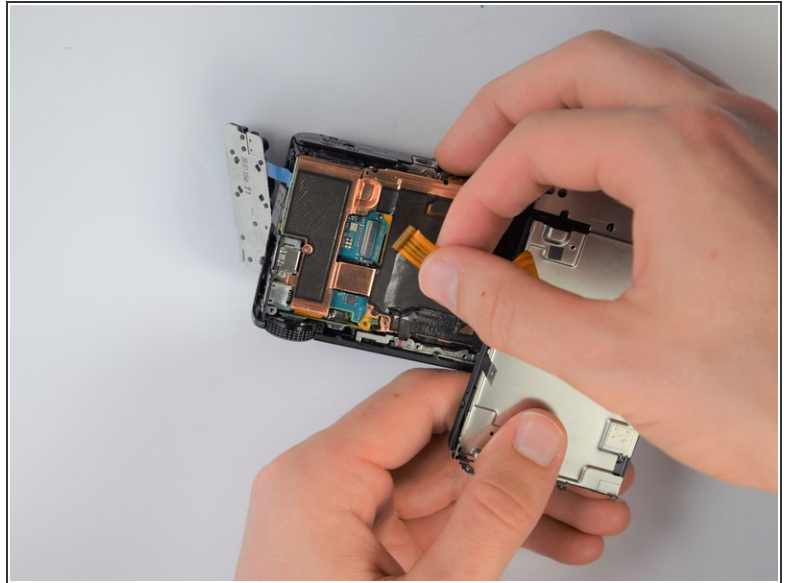
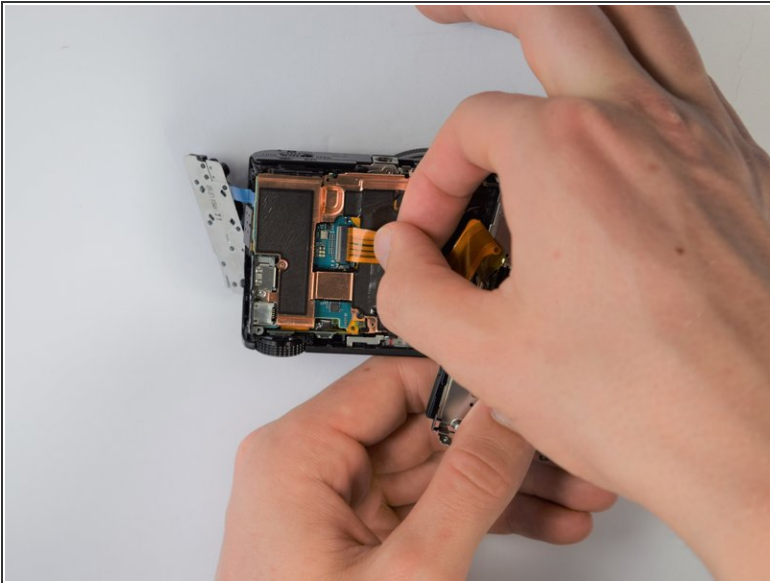
## Step 8



- Remove back panel assembly while still keeping ribbon cable attached

⚠ Be very gentle and care not to tear the gold ribbon cable. This will be a common theme throughout these replacement guides.

## Step 9



- Carefully unplug ribbon connector to fully detach LCD screen assembly from camera

To reassemble your device, follow these instructions in reverse order.