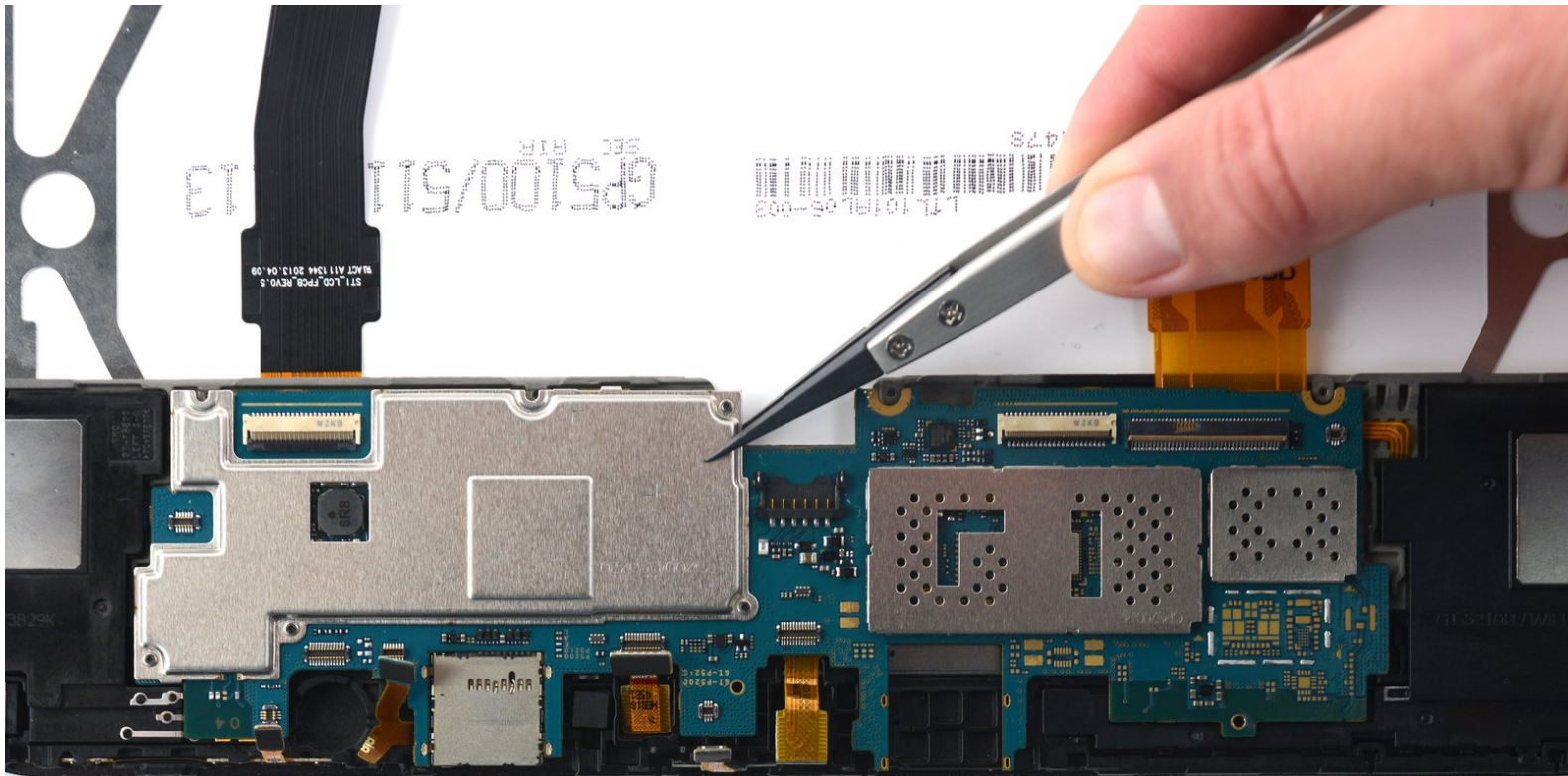




Samsung Galaxy Tab 3 10.1 Motherboard Replacement

If your motherboard is faulty or broken, this guide will show you how to replace your broken motherboard with a new one.

Written By: Corey Brown





TOOLS:

- [Spudger](#) (1)
- [Phillips #000 Screwdriver](#) (1)
- [iFixit Opening Picks set of 6](#) (1)
- [Nylon Tipped Tweezers](#) (1)



PARTS:

- [Galaxy Tab 3 10" Wi-Fi Motherboard](#) (1)

Step 1 — Rear Case



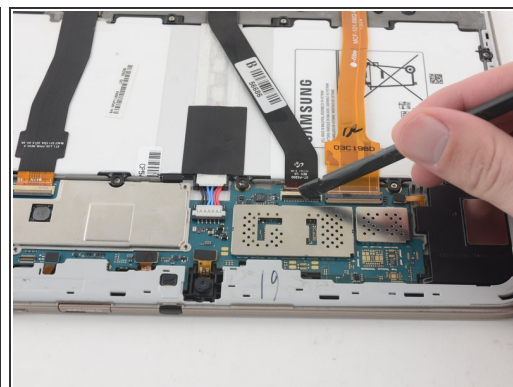
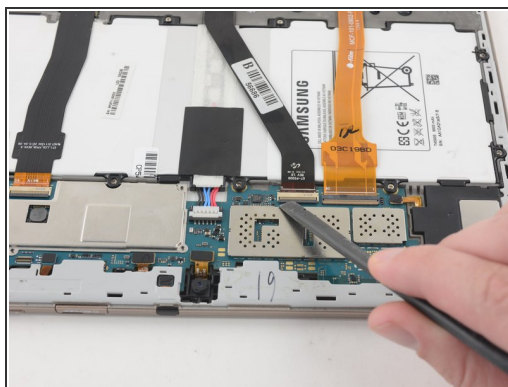
- Insert an opening pick between the rear case and the plastic rim.
- ⓘ You may need to add multiple picks to detach the clips.
- Slide the pick along the edge of the rear case until you release the plastic clips attaching the rear case to the display.
- Continue to slide the pick around the edge of the rear case until all clips are released.

Step 2



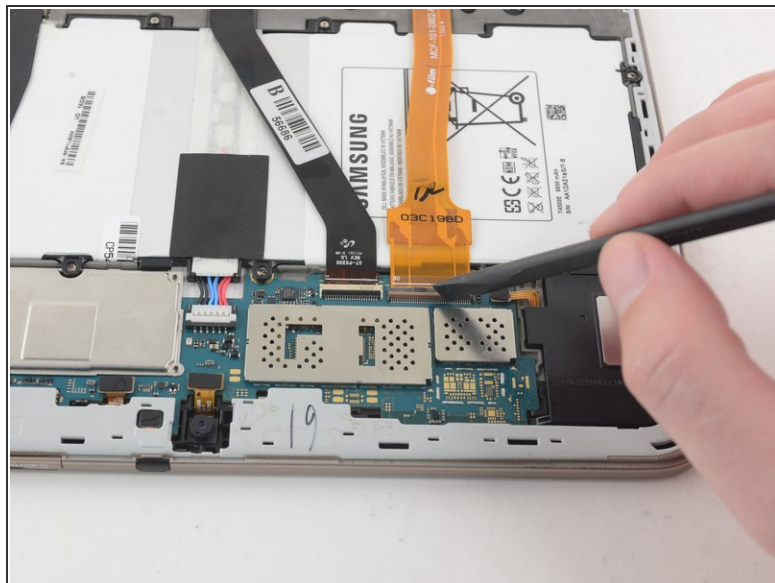
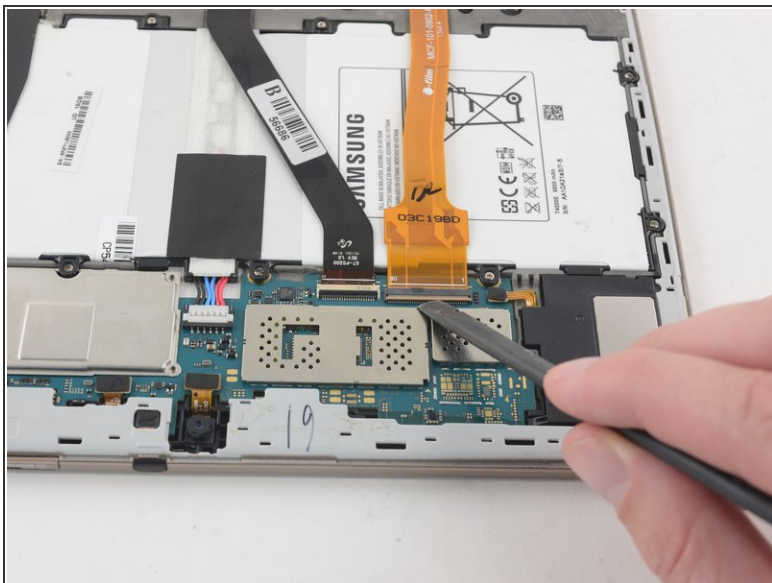
- Lift the case up to remove it.

Step 3 — Battery



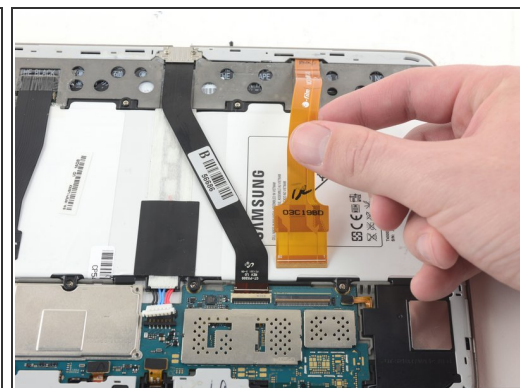
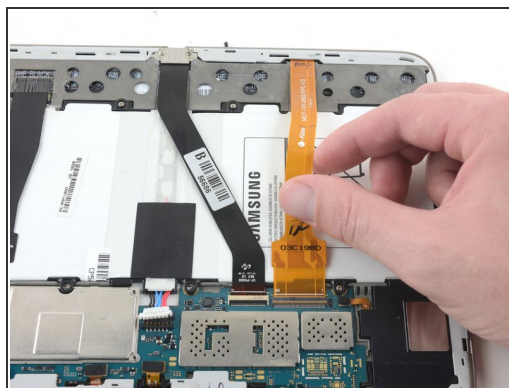
- Use the flat end of a nylon spudger to pry up the **black** plastic tabs securing the two ZIF connectors.

Step 4



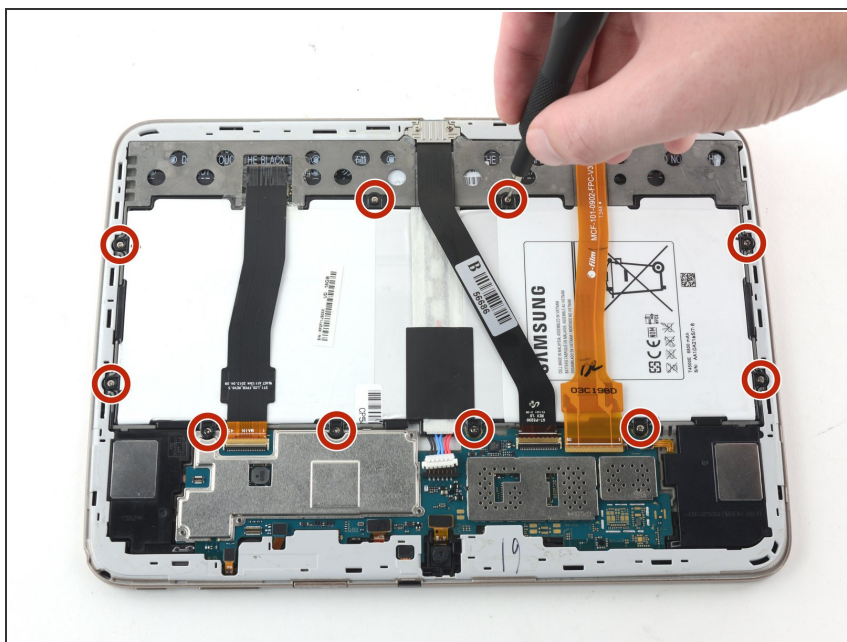
- Use the flat end of a nylon spudger to pry up the **brown** plastic tab securing the orange ribbon cable.

Step 5



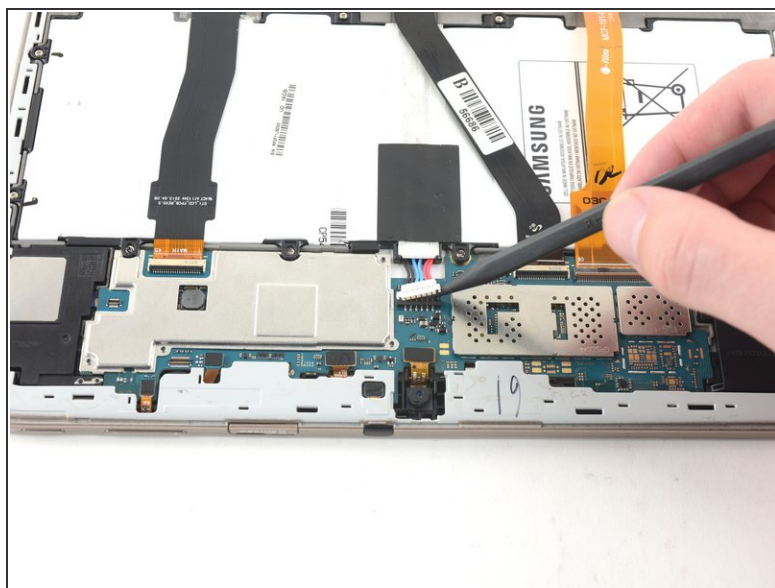
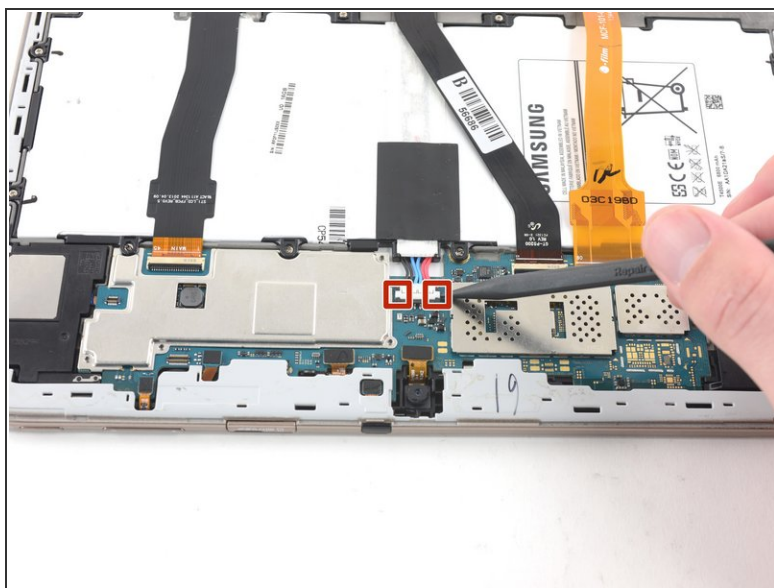
- Remove all three ribbon cables by gently pulling the cables away from the ZIF connectors.

Step 6



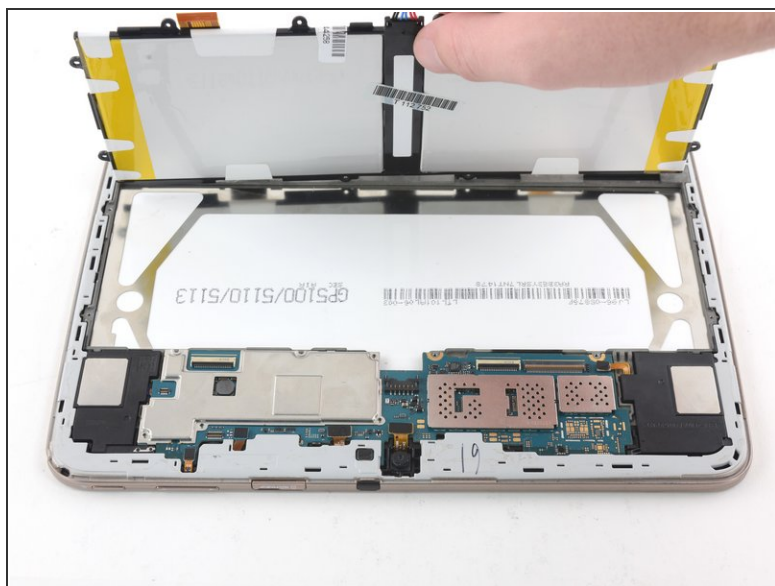
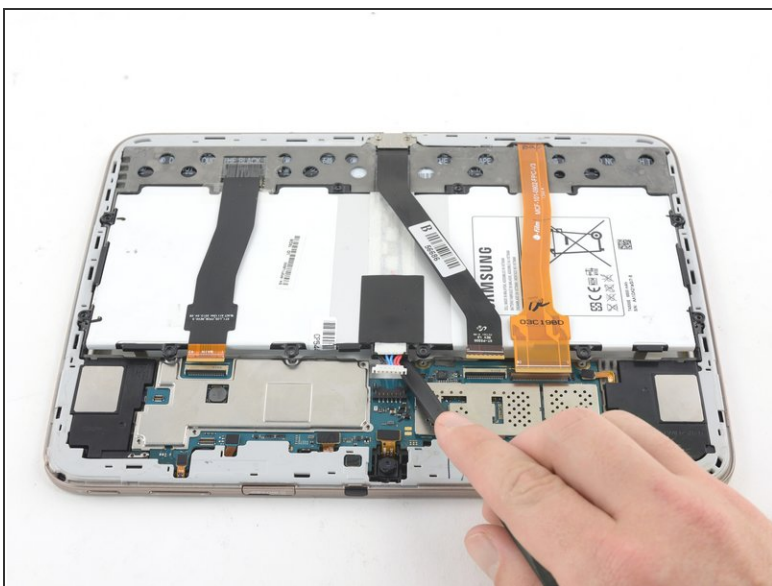
- Use a Phillips #000 screwdriver to remove the ten 3mm screws securing the battery to the chassis.

Step 7



- Use the pointed end of a nylon spudger to pry the two battery connections away from the motherboard.

Step 8



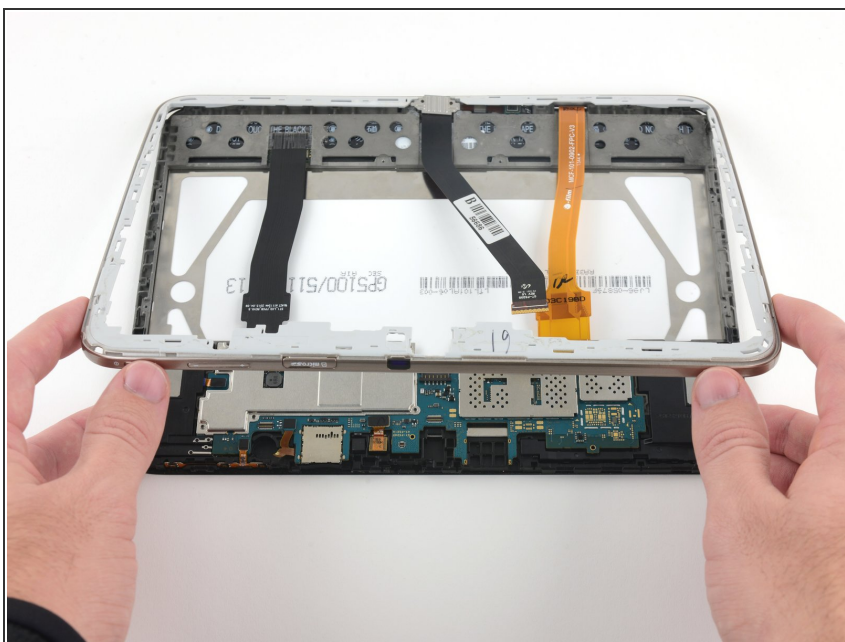
- Lift with a nylon spudger to remove the battery.

Step 9 — Motherboard



- Insert an opening pick between the plastic frame and the screen.
- Slide the opening pick around the perimeter of the screen.
- ⓘ You will hear clicking noises as each plastic clip is released from the display chassis.

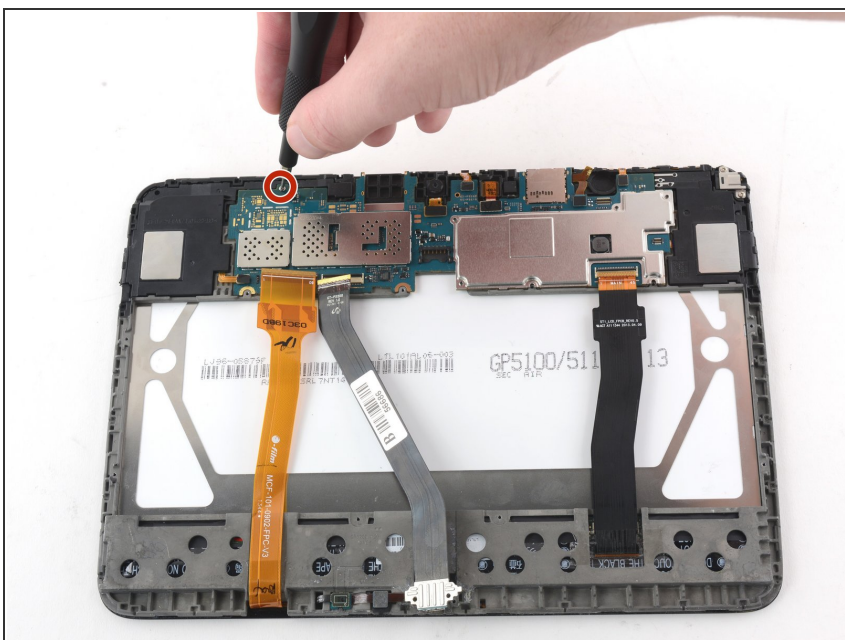
Step 10



- Lift the plastic frame to remove.

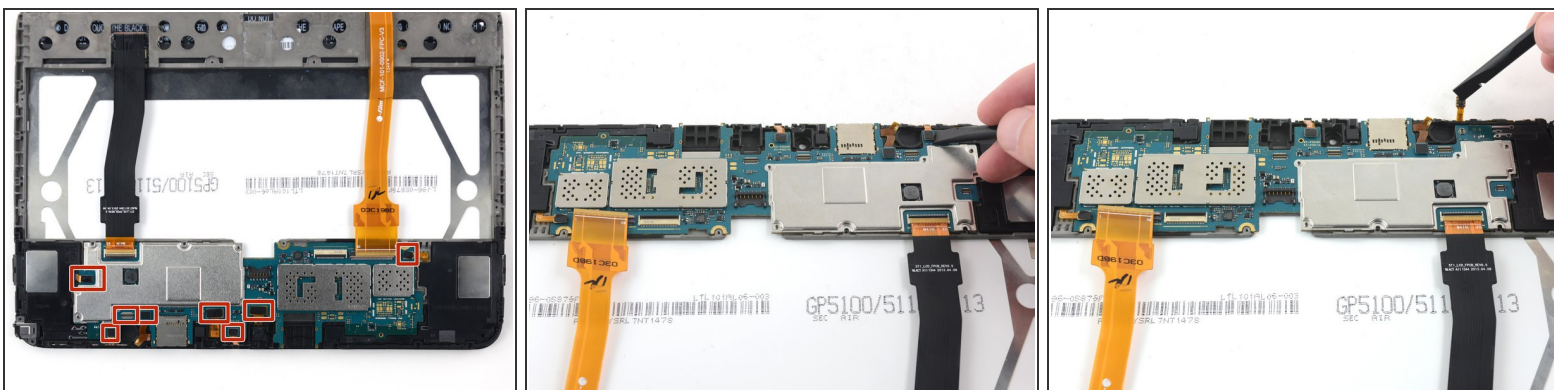
⚠ Avoid the three delicate ribbon cables.

Step 11



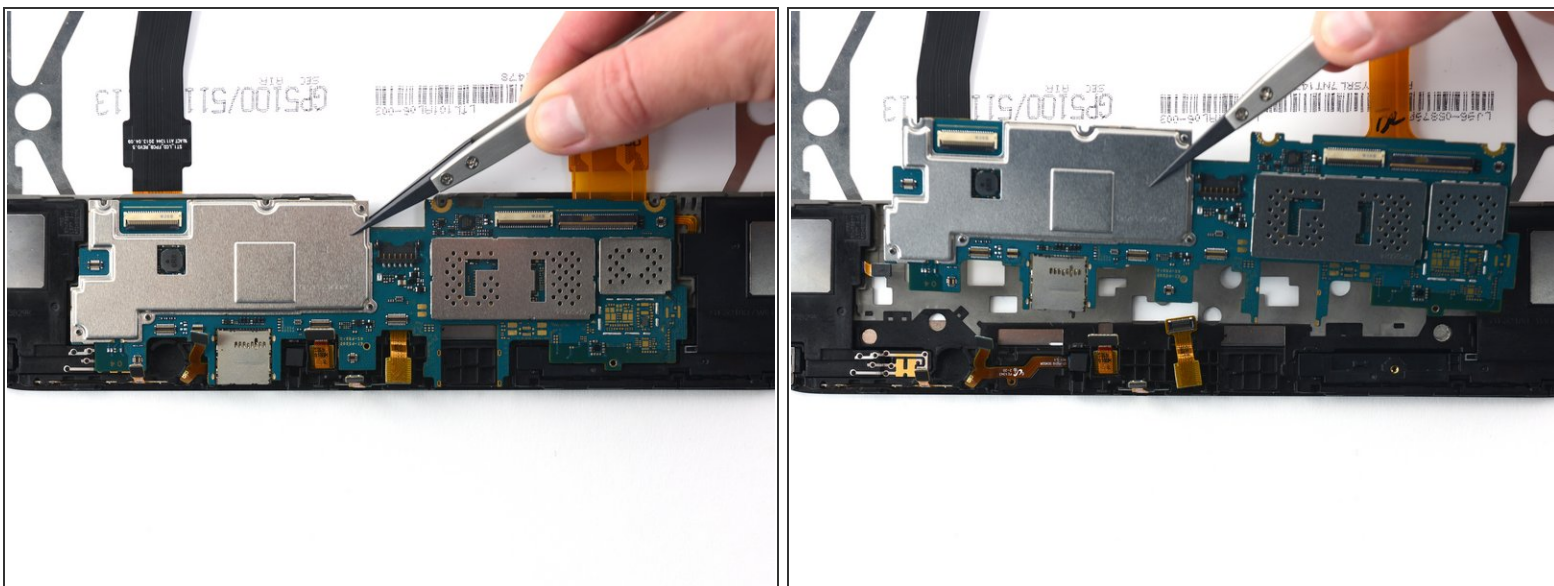
- Use a Phillips #000 screwdriver to remove the 3mm screw attaching the motherboard to the display chassis.

Step 12



- Use a nylon spudger to flip up the eight press-fit connectors from the motherboard.
- ❗ The vibration motor is missing from these photos.

Step 13



- Use nylon-tipped tweezers to remove the motherboard.

To reassemble your device, follow these instructions in reverse order.