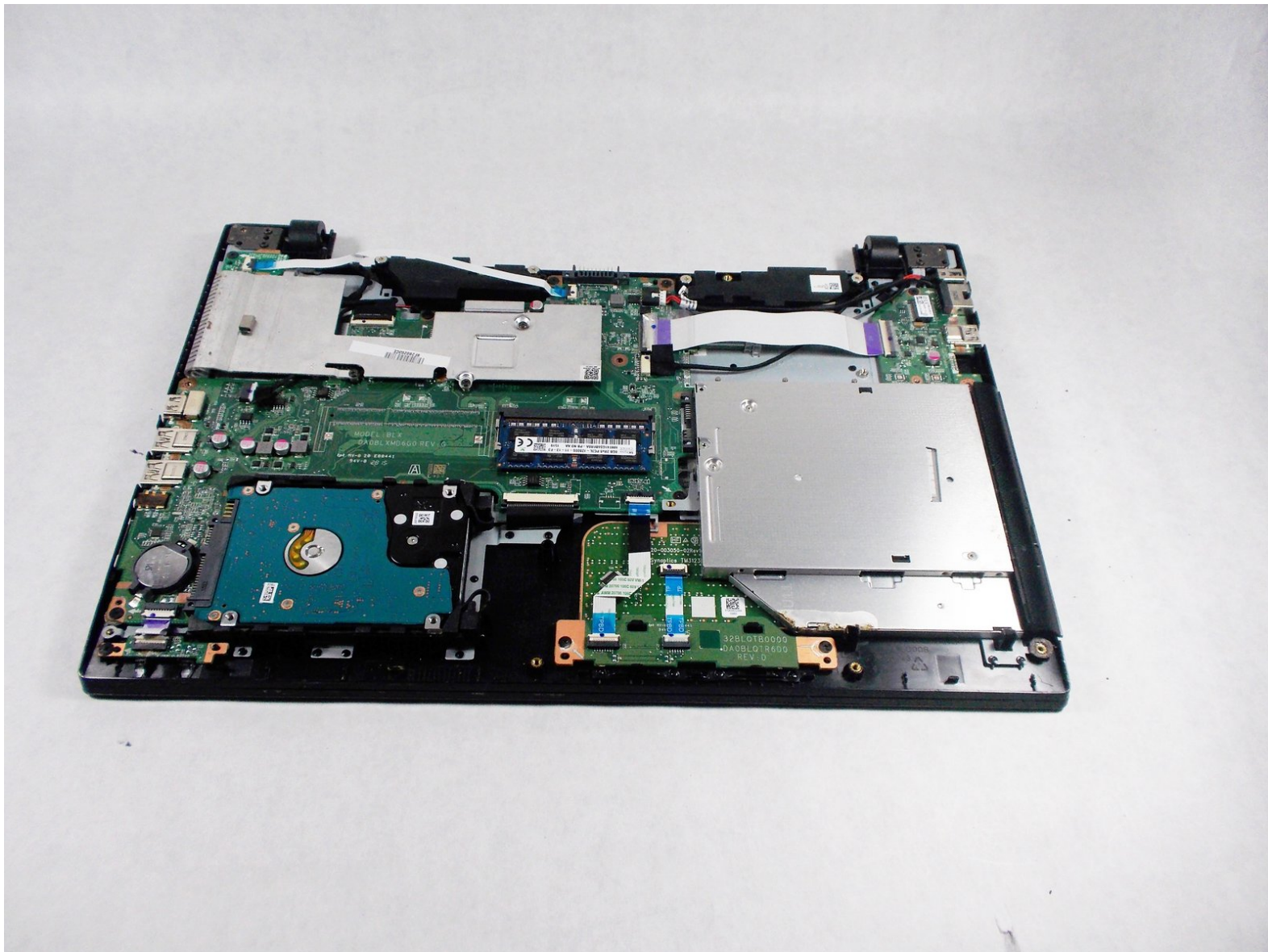




Toshiba Satellite C55-C5268 LAN Card Replacement

This guide will help you successfully remove and replace the USB port on a Toshiba Satellite laptop.

Written By: Ben Rounseville



INTRODUCTION

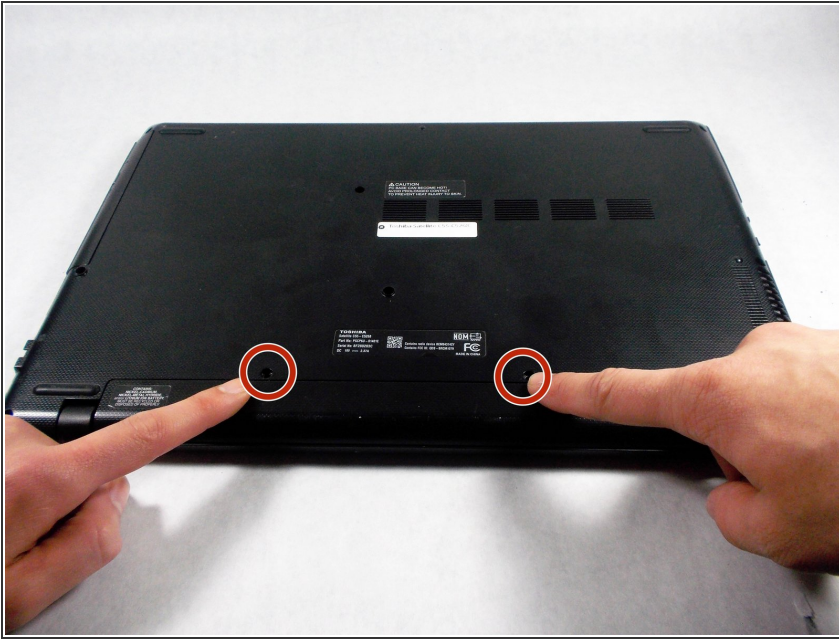
The LAN card is important for internet connectivity. If you're having issues connecting to a router, and are sure it's a hardware problem, this is the place to look.




TOOLS:

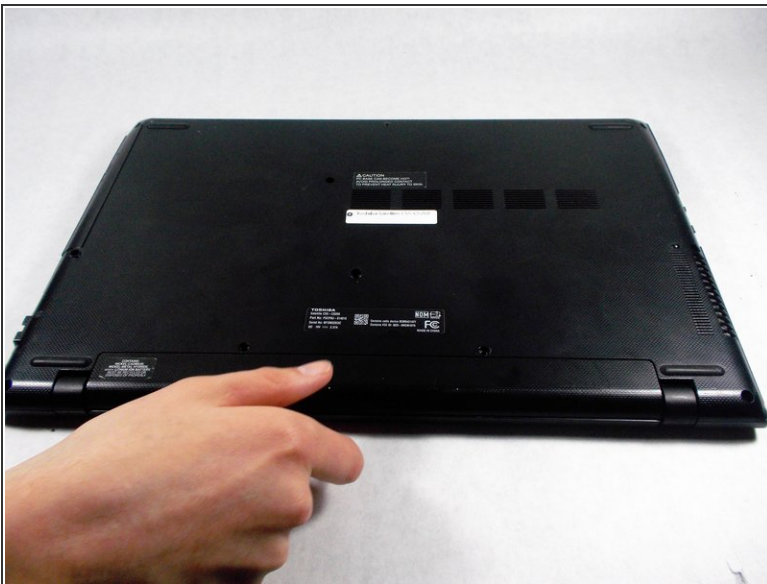
- [Metal Spudger](#) (1)
 - [Tweezers](#) (1)
-


Step 1 — Battery



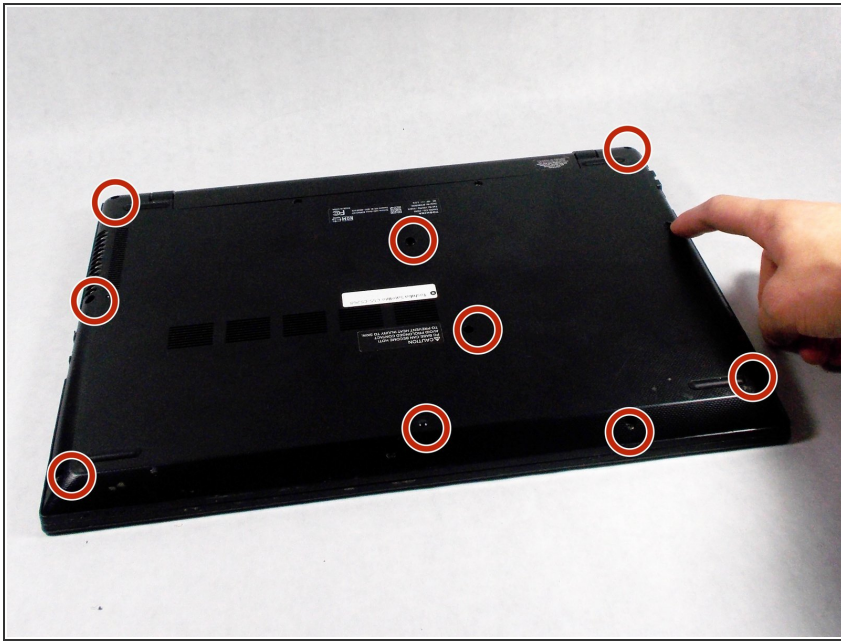
-  Unplug and power off the laptop.
- Unscrew the two 9 mm Phillips #1 screws holding the battery in place.

Step 2



- Grab the battery and pull it away from the laptop to remove it.
-  This doesn't require a lot of effort, so you don't have to pull too hard.


Step 3 — Back Panel



- Unscrew the 10 9.0 mm screws holding the back panel on using a Phillips head #1 screwdriver.

Step 4



 Using a metal spudger can damage sensitive components.

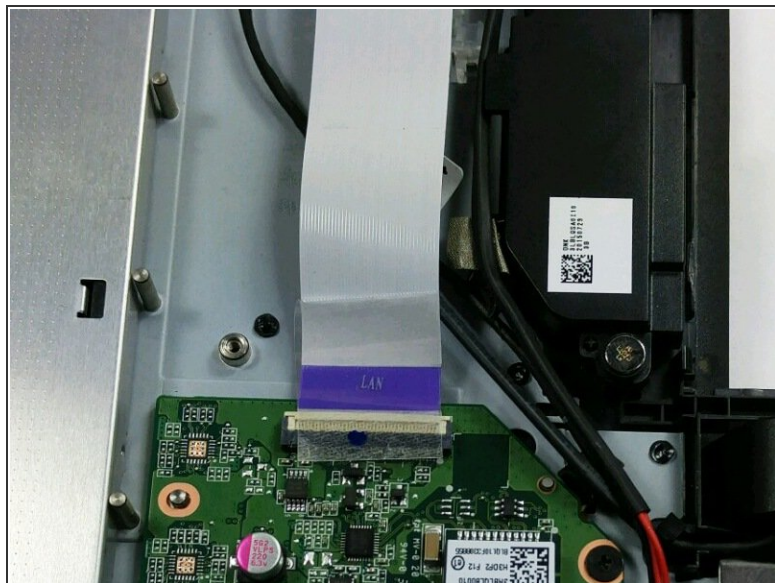
- Insert a metal spudger tool in the seam between the back cover and the laptop itself. Gently run the spudger around the edge to pop the cover off.

Step 5



- Pry up the back panel from the rest of the laptop using a spudger.
- ⓘ It is best to start around the USB port and work your way around the edge until the panel completely snaps off.

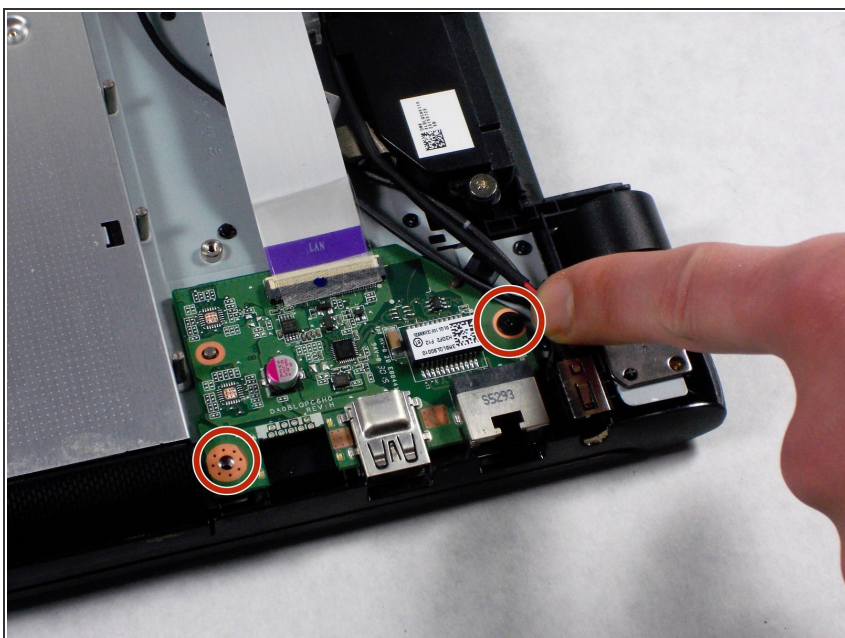
Step 6 — LAN Card



- Gently remove the ribbon cable from the clip it's held in. Peel back the tape holding it in and pull the cable straight out. It is not necessary to unclip the holder.

i The correct ribbon has a blue ends labeled with LAN.

Step 7



- Remove the two 5.0 mm screws, using a Phillips #1 screwdriver, once the cable is out of the way.

Step 8



- Lift the card out of the laptop to replace it.

To reassemble your device, follow these instructions in reverse order.