



# Toshiba Satellite C55-C5268 Back Panel Replacement Guide

Most components in need of replacement or repair will be behind the back panel of the Toshiba Satellite.

Written By: Ben Rounseville



---

## INTRODUCTION

This guide will show you how to successfully remove the back panel to gain access to these components.

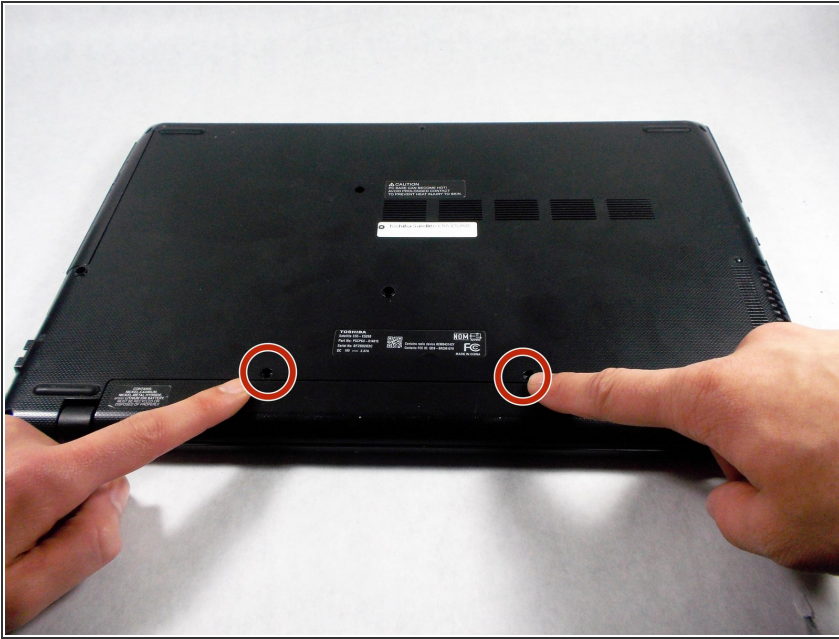
---



### TOOLS:

- [Phillips #1 Screwdriver](#) (1)
  - [Spudger](#) (1)
-

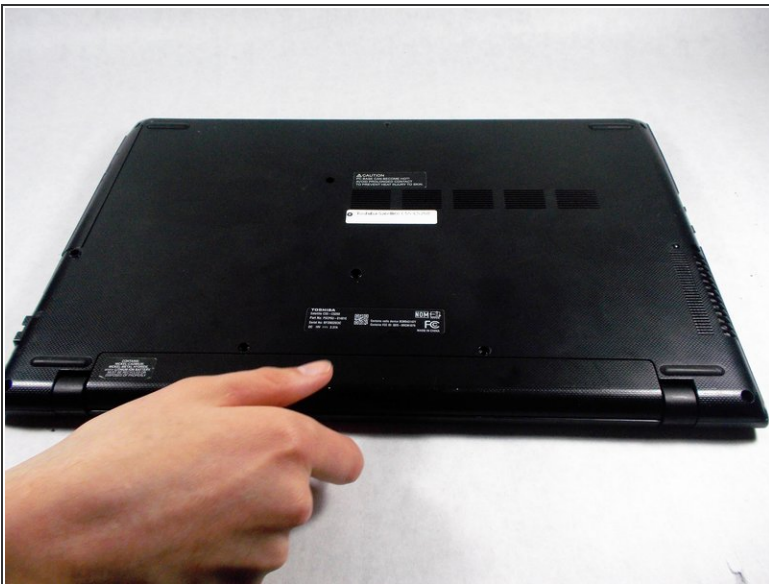
## Step 1 — Battery



**i** Unplug and power off the laptop.

- Unscrew the two 9 mm Phillips #1 screws holding the battery in place.

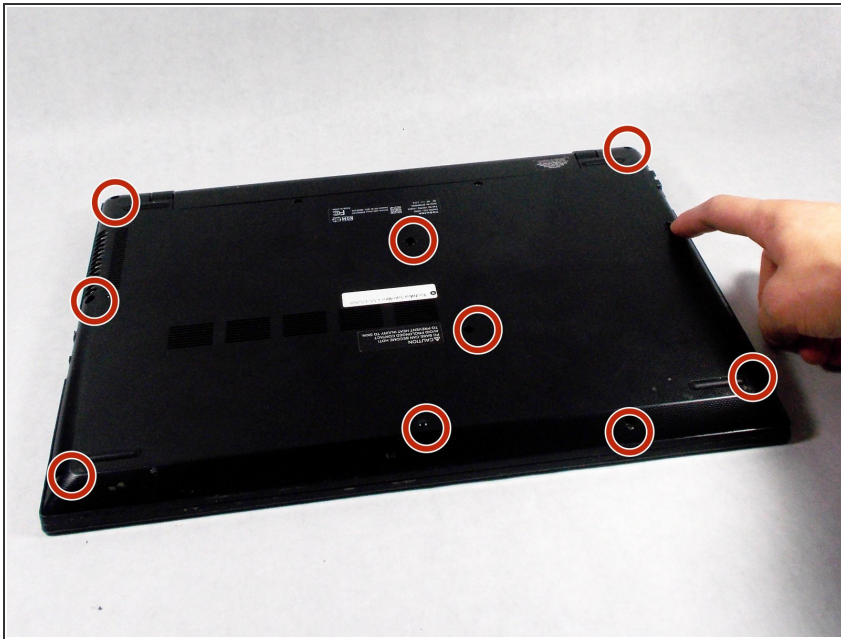
## Step 2



- Grab the battery and pull it away from the laptop to remove it.

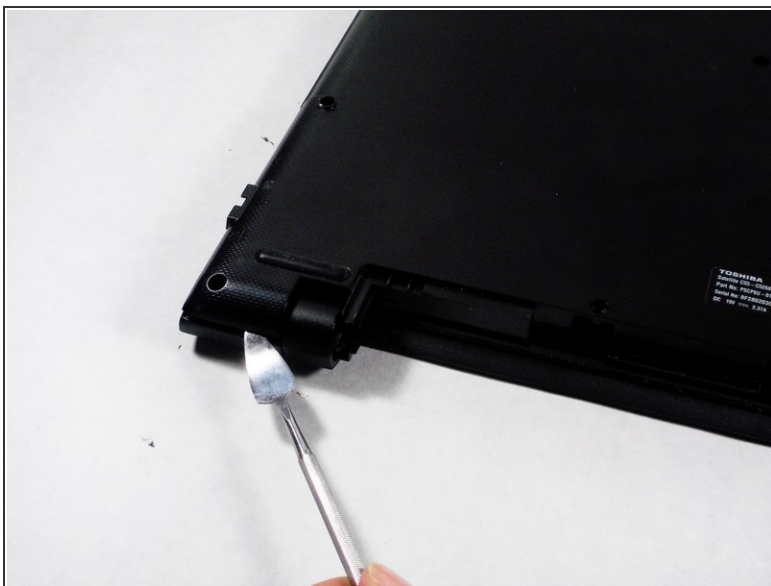
**i** This doesn't require a lot of effort, so you don't have to pull too hard.

## Step 3 — Back Panel



- Unscrew the 10 9.0 mm screws holding the back panel on using a Phillips head #1 screwdriver.

## Step 4



⚠ Using a metal spudger can damage sensitive components.

- Insert a metal spudger tool in the seam between the back cover and the laptop itself. Gently run the spudger around the edge to pop the cover off.

## Step 5



- Pry up the back panel from the rest of the laptop using a spudger.
- ⓘ It is best to start around the USB port and work your way around the edge until the panel completely snaps off.

To reassemble your device, follow these instructions in reverse order.