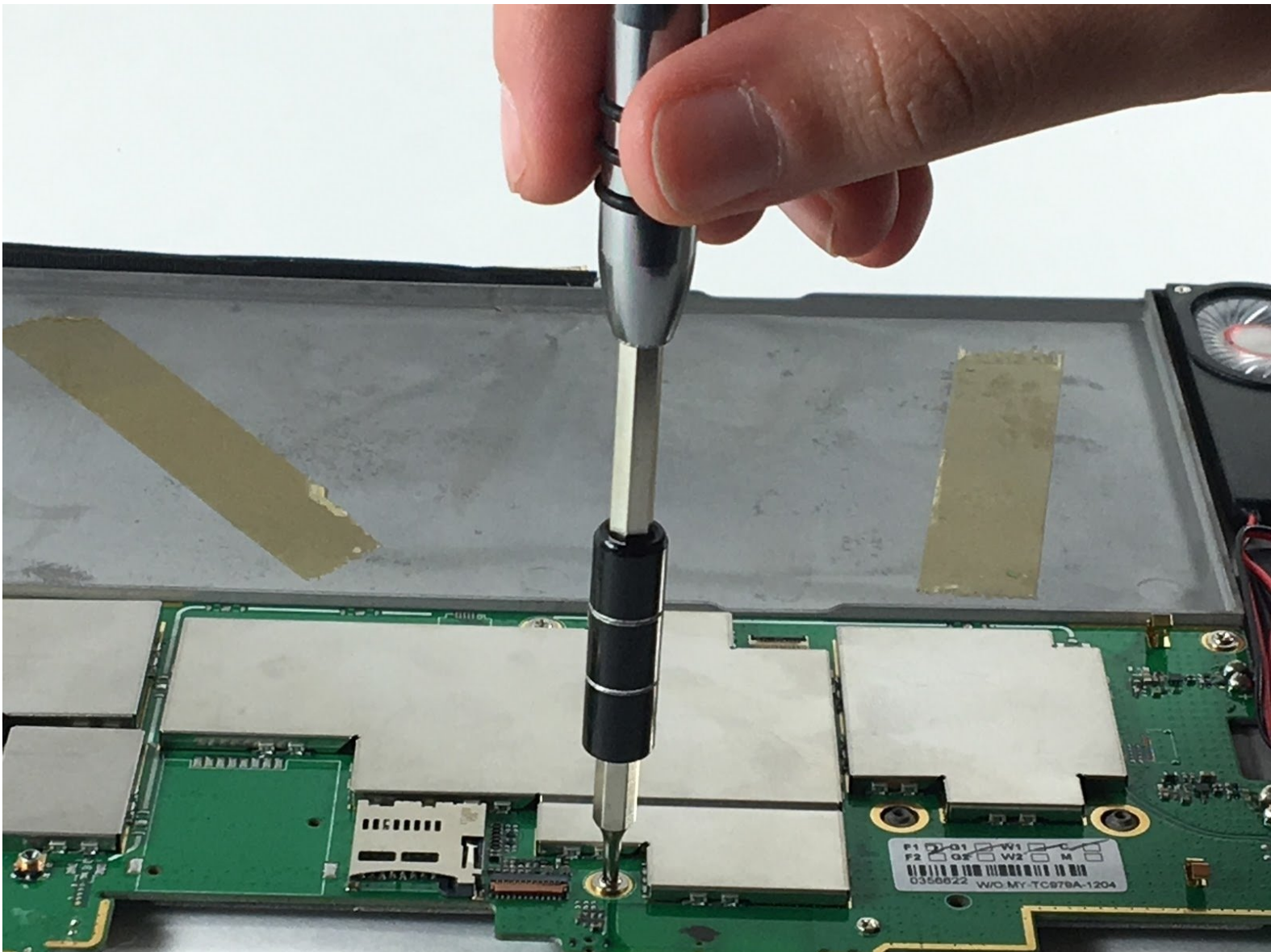




# Le Pan II Motherboard Replacement

Occasionally, the entire motherboard of a device, such as the Le Pan II, may have to be replaced.

Written By: Kelly Moniz



# INTRODUCTION

In this guide, you will be shown step-by-step how to replace your Le Pan II motherboard. The fans should remain attached to the motherboard when you are finished.

---

## TOOLS:

- [Metal Spudger](#) (1)
- [iFixit Opening Tools](#) (1)

*Optional*

- [Phillips #00 Screwdriver](#) (1)
-

## Step 1 — Screen

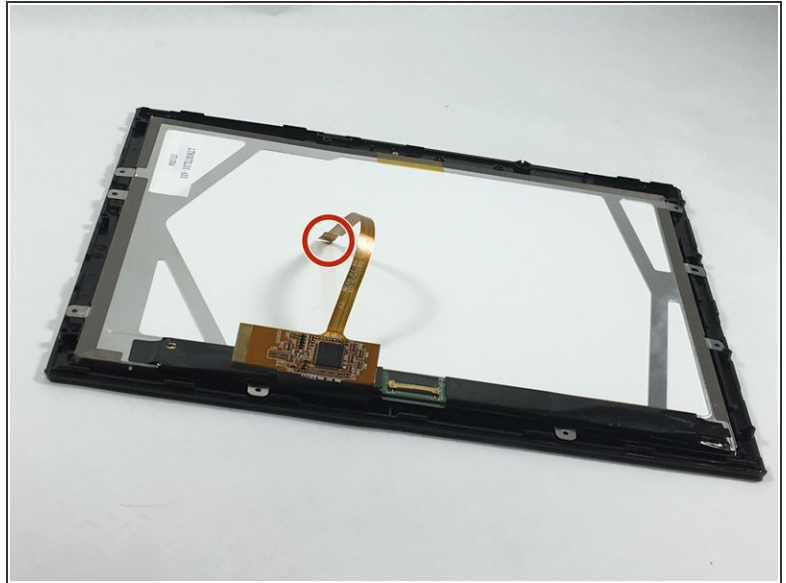
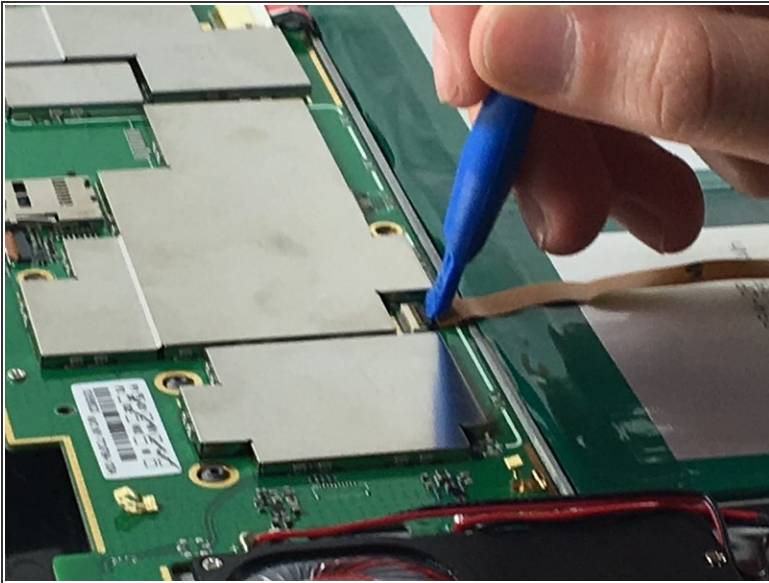


- Insert metal spudger between front and back panel to pry apart.
- Continue to pry while moving the metal spudger along the crevice to completely separate two panels.

⚠ Avoid using metal when opening devices, as it can damage or crack the screen.

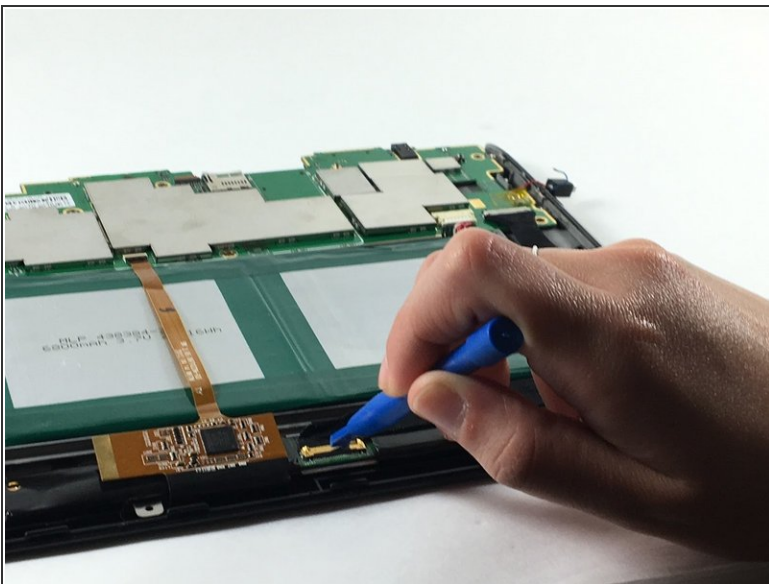


## Step 2



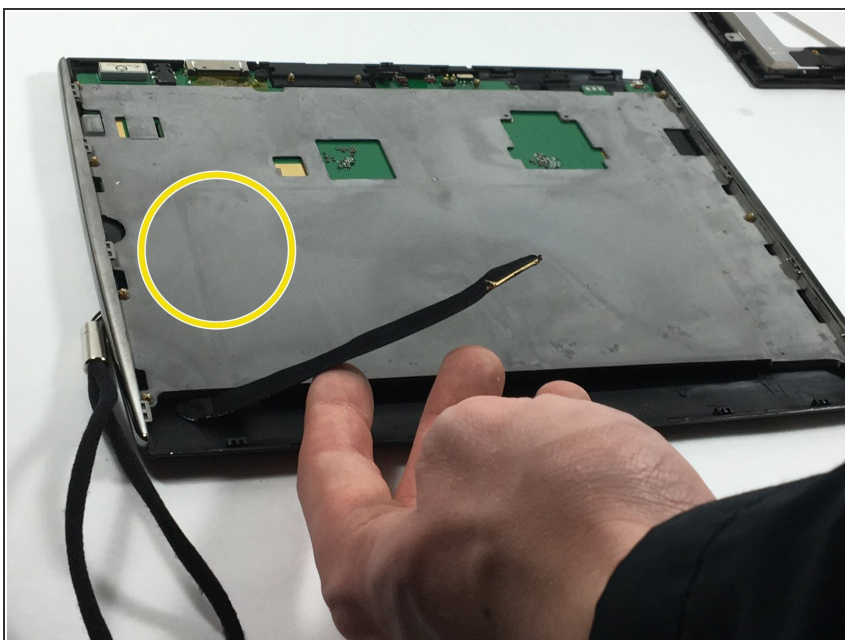
- Use the plastic opening tool to disconnect the flat ribbon cable from the motherboard connector.
- Disconnect the flat ribbon by gently pulling it out from its connecting port.

## Step 3



- Use the plastic opening tool to disconnect the display cable from its motherboard connector.
- Disconnect the display cable by gently pulling it out from its connecting port.

## Step 4



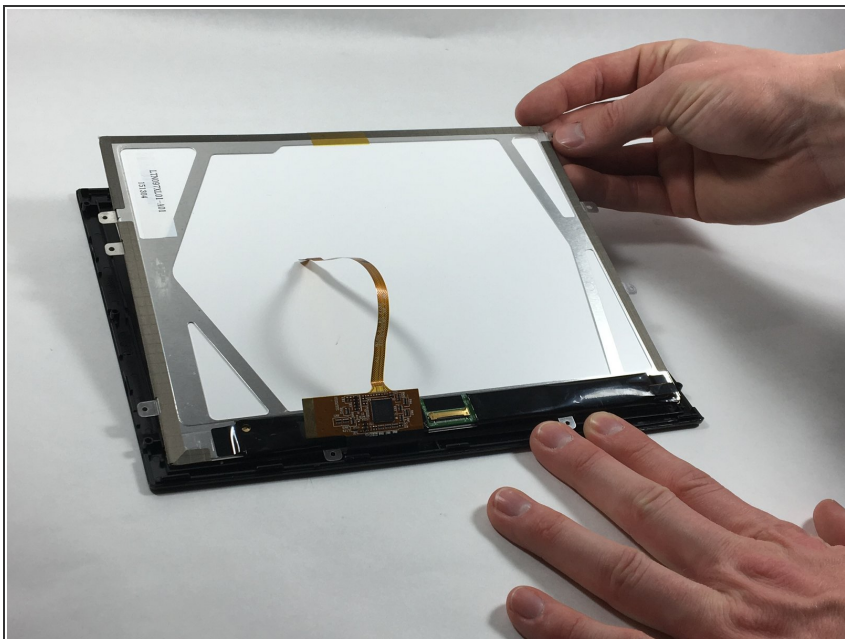
- Remove grey metal backing from screen.

## Step 5



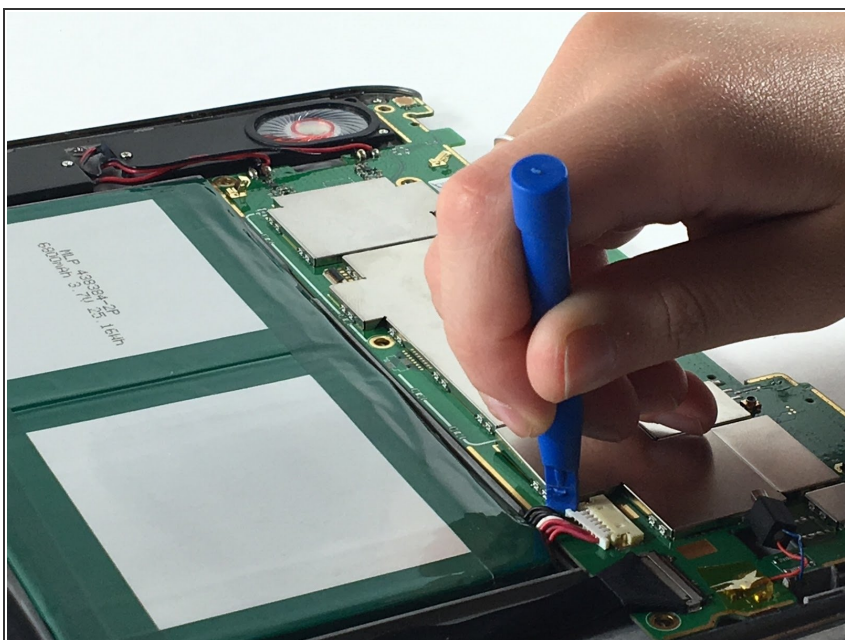
- Flip the tablet so the screen is facing upward, and use the metal spudger to pry apart the screen from the side pieces.

## Step 6



- Lift and carefully remove the LCD display from the front cover.

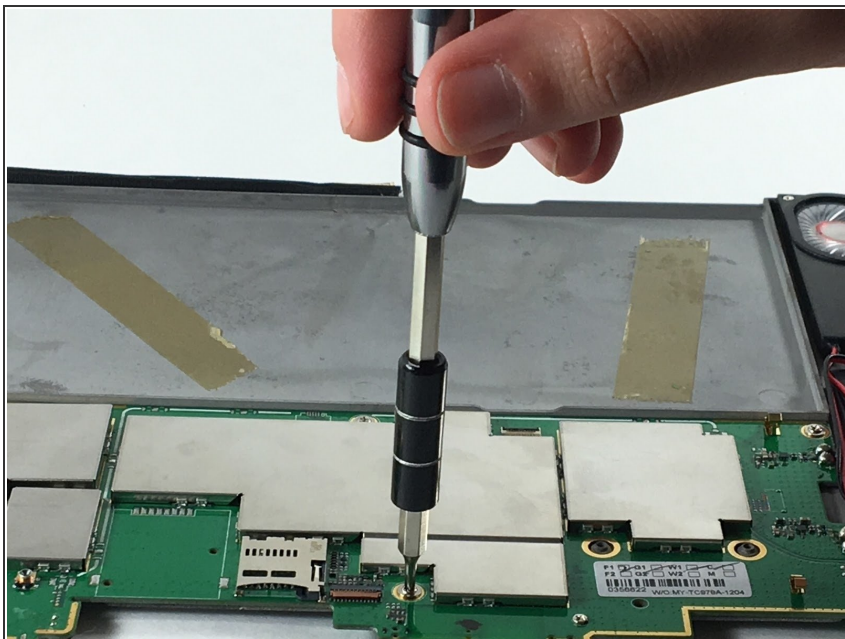
## Step 7 — Battery



- Use the plastic opening tool to push out the wires connecting the battery to the motherboard and put battery aside.



## Step 8 — Motherboard



- Use the Phillips 00 screwdriver head to unscrew the screws to the motherboard.

★ Reminder: There should 8 (3.5mm) screws

## Step 9



- Use the Phillips 00 screwdriver head to unscrew the screws to the fan.

★ Reminder: There should be 4 (1 mm) screws for the fan.

i Note: From here, you can simply lift and remove the motherboard from the rest of the device.

To reassemble your device, follow these instructions in reverse order.