



How to disassemble and clean your Roomba 560

Complete cleaning of Roomba 560 after running over non-approved substances (mud, gravy, etc.)

Written By: HoyeBoye



INTRODUCTION

This guide will walk you through a complete disassembly of the Roomba's dust-bin, brush assemblies, and outer-housing.



TOOLS:

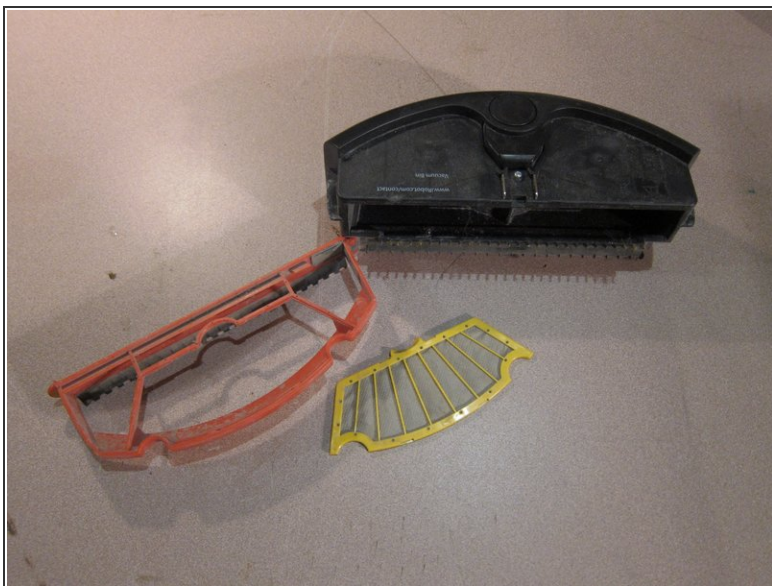
- [Essential Electronics Toolkit](#) (1)
 - [Paper Towels](#) (1)
 - [Zip Ties](#) (1)
-

Step 1 — How to disassemble and clean your Roomba 560



- Remove dust bin from Roomba. This will be the first sub-assembly cleaned.

Step 2



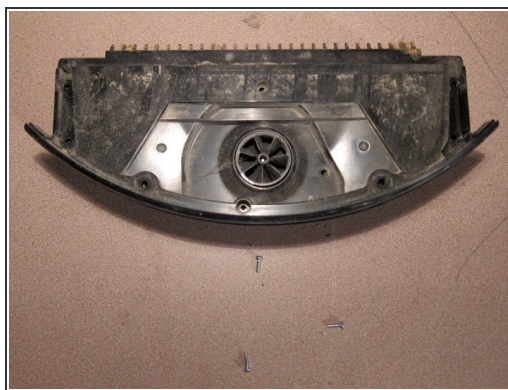
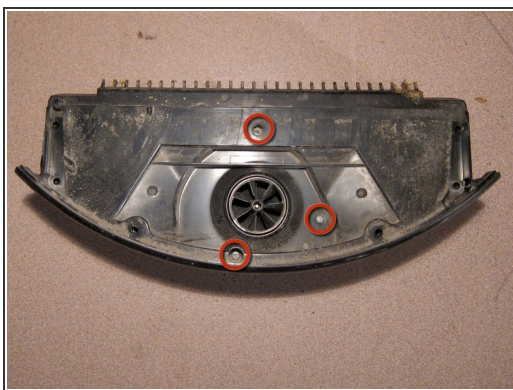
- Open red dust-bin cover. Remove debris from the dust-bin.
- Remove the filter from the red dust-bin cover.
- Remove the red dust-bin cover from the bin by gently pressing on the red cover near the hinge.

Step 3



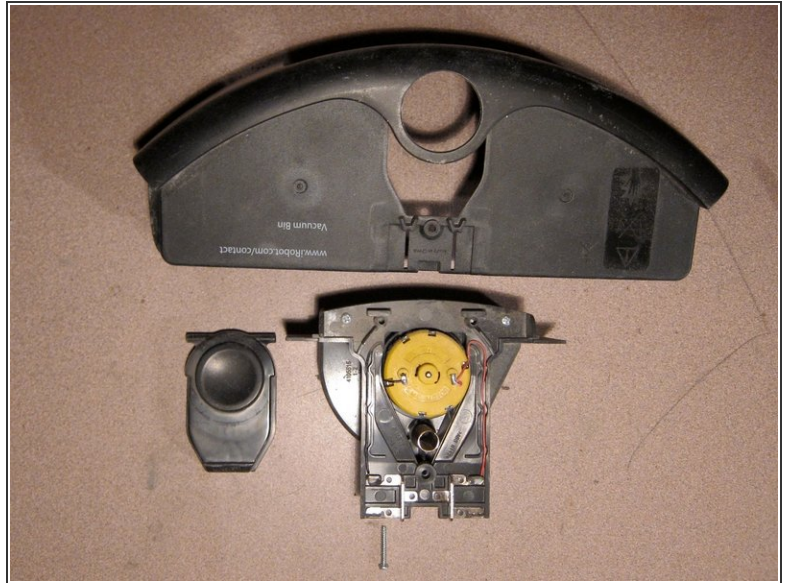
- Turn over the dust-bin.
- Remove 6 screws from the clear bottom dust-bin cover.
- Remove the clear bottom dust-bin cover.

Step 4



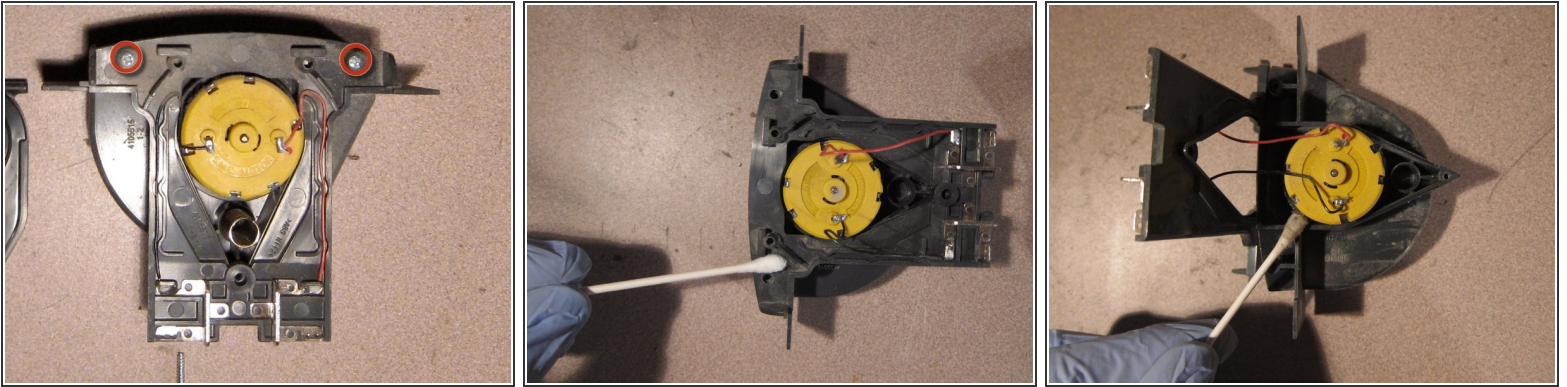
- Remove three screws from the remaining dust-bin assembly.
- Lift to remove middle plate from dust-bin assembly.
- Slide out and remove exhaust grill from dust-bin assembly.

Step 5



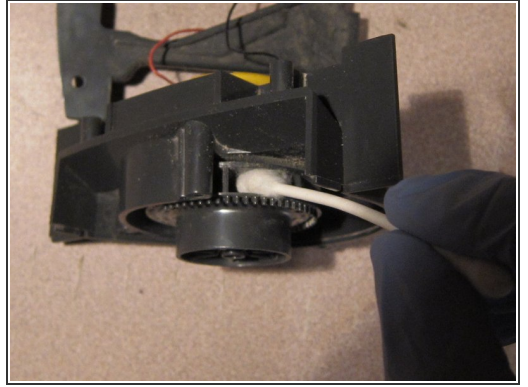
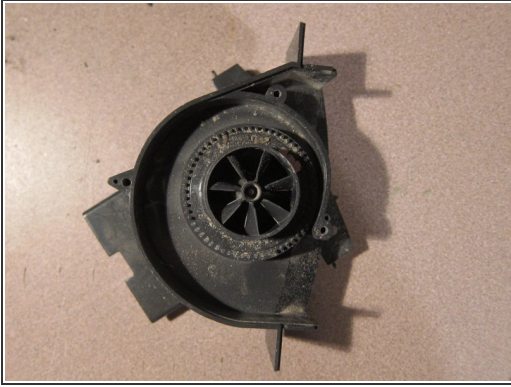
- Turn over top dust-bin plate so the release button is facing up.
- Remove screw from top plate.
- Remove blower assembly, push-button, and spring.

Step 6



- Remove two screws from blower assembly.
- Clean dirt and debris from top of blower assembly.
- Carefully lift top from blower assembly. DO NOT DETACH WIRES.
- Clean underside of blower cover and around blower.
- Replace blower cover with two screws.

Step 7



- Turn over blower assembly
- Clean underside surface of blower assembly.
- Clean fan blades using a cotton swab.
- Turn blower assembly on its side.
- Again, clean fan blades using a cotton swab.

Step 8



- Clean all surfaces of the top plate of the dust bin.

Step 9



- Clean all sides of vent grill and between grill slats.

Step 10



- Clean all surface of the middle plate of the dust bin.
- Clean between the teeth on the front edge of the plate.

Step 11



- Re-assemble the blower assembly, vent grill, button, button spring, and top & middle dust-bin plates.
- Make sure blower assembly slides into the two channels.
- Replace 3 screws on middle plate and 1 screw on top plate.

Step 12



- Clean all surfaces of the clear dust bin cover.
- Pull off the rubber strip and clean under the rubber strip.
- Clean all surfaces of the rubber strip.
- Re-install rubber strip.

Step 13



- Clean all surfaces of the red dust-bin cover.
- Use a small flathead screwdriver or pick to clean inside corners.
- Replace filter with new filter for best results.

Step 14



- Re-attach clear dust-bin cover to dust-bin assembly (see step 11) with six screws.
- Insert red dust-bin cover.
- Set clean dust-bin aside.

Step 15



- Turn Roomba upside-down so the brushes are facing up.
- Open brush cage by pressing on yellow tabs and pulling up on the green brush cage lid.
- Remove both brushes, lifting from the right side of the brushes.

Step 16



- Remove the two yellow endcaps from the bristle brush.
- Run the brush through the red bristle cleaning tool, included with your Roomba.
- Repeat several times until the the cleaning tool no longer picks up hair/fibers.

Step 17



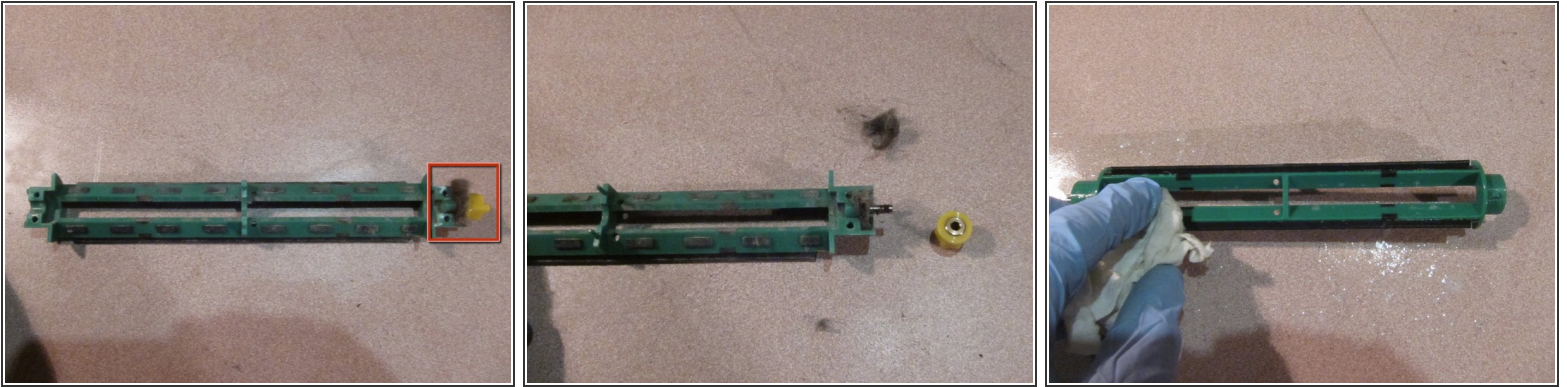
- Clip the zip-tie with a pair of snips and remove the zip-tie from the brush.
- Remove four screws from the ends of the brush.
- Pull apart green brush housing.

Step 18



- Spray bristles with an all-purpose cleaning solution.
- Squeeze bristle rod with a paper towel and run bristle rod through paper towel.
- Repeat several times until bristles are clean.

Step 19



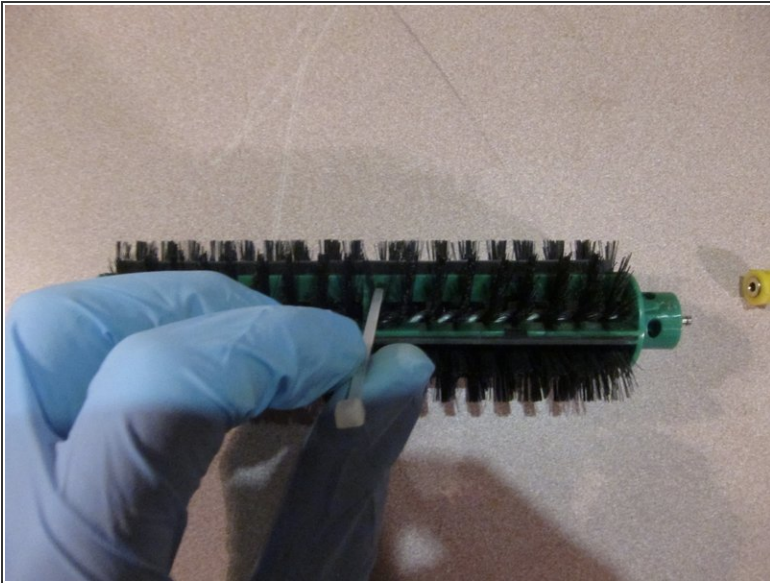
- Remove yellow bearing from green bristle housing.
- Clean yellow bearing and hair/fibers from the axle.
- Clean all surfaces of both parts of the green bristle brush housing.

Step 20



- To re-assemble the green brush housing, push the green housing against the side of one row of bristles.
- Push on the bristles until they no longer fan out and the bristle tips are lined up with the long slot in the green brush housing.
- Rotate the green brush housing so the line of bristles goes through the slot in the green brush housing.
- Repeat step for the other green brush housing.

Step 21



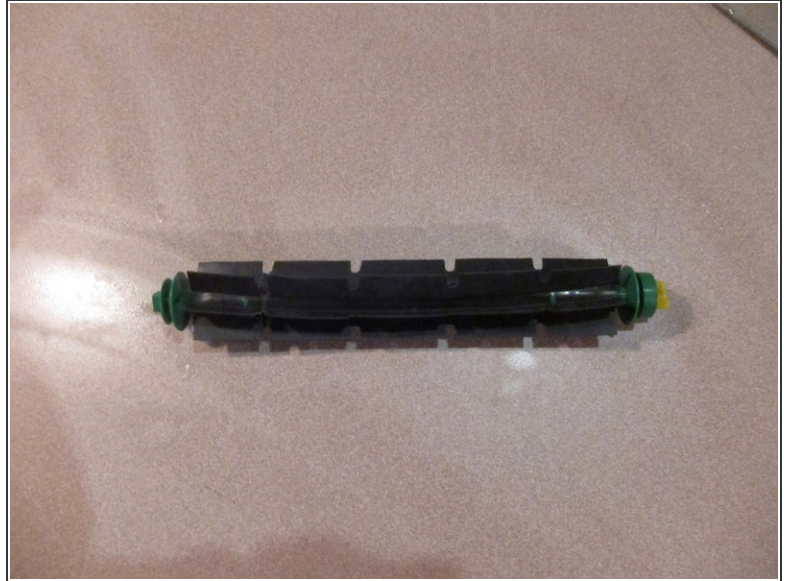
- Replace 4 screws on the ends of the brush.
- Run the zip-tie through holes near the center of the brush. Secure the zip tie and clip off any excess.
- Re-attach yellow bearing and two yellow endcaps.
- Set aside for later installation.

Step 22



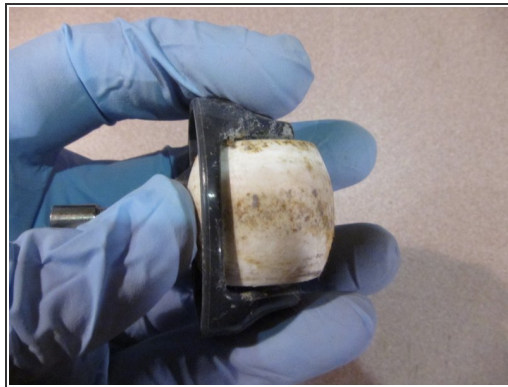
- Remove plastic sweeper bar from brush housing.
- Remove yellow plastic end-piece from axle.
- Remove hair and debris from both ends of axle. You may need to use a small pick or manicuring scissors to remove hair from the axle.

Step 23



- Spray all surfaces with cleaning solution. Wipe clean with paper towel. Follow up with smaller cleaning tools if necessary.
- Clean yellow plastic end piece with cleaning solution and paper towel or cotton swab.
- Replace yellow plastic end piece on axle.
- Set aside for later installation.

Step 24



- With Roomba wheels-up, grab onto front wheel and firmly pull straight up to remove wheel.
- From the underside of the wheel housing, push the wheel out of the housing.

Step 25



- Remove the axle from the wheel.
- Thoroughly clean the axle and the wheel with a paper towel and cleaning solution.
- Thoroughly clean wheel housing with paper towel, cotton swab, and cleaning solution.
- Re-assemble wheel housing by inserting axle in wheel and pressing wheel with axle back into wheel housing.
- DO NOT insert wheel housing back into Roomba body. That will be done later.

Step 26



- Remove center screw from edge brush and set aside.
- Remove brush from Roomba body by lifting on any set of bristles.

Step 27



- Place edge brush on paper towel and douse with cleaning solution.
- Rub each set of bristles with paper towel until bristles appear clean and free of debris.
- Place edge brush on a clean paper towel and douse with bleach water.
- Rub each set of bristles with paper towel as you did earlier with the cleaning solution.
- Set aside for later assembly.

Step 28



- Unscrew 4 screws from the underside of the Roomba. Screws will separate from underside plastic plate.
- Spray with cleaning solution and clean with paper towel. Follow up with smaller cleaning tools if needed.
- Set aside for later installation.

Step 29



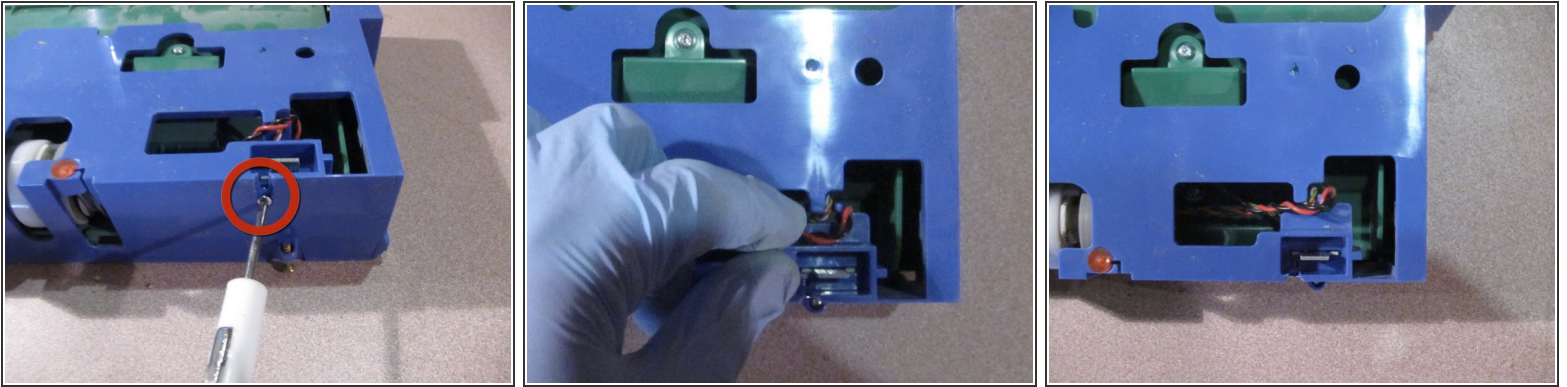
- Unscrew 4 screws around the brush cage housing. Screws will not separate from brush cage housing.
- Lift brush cage assembly from Roomba body.

Step 30



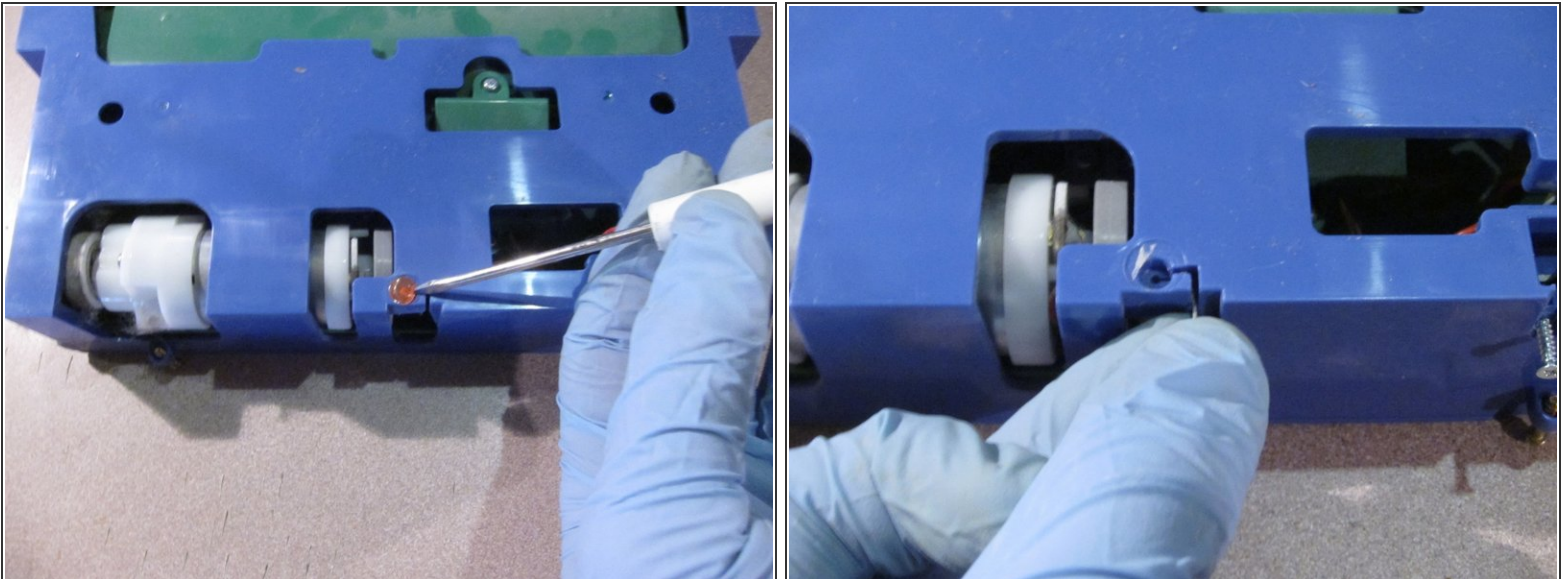
- Place the brush assembly with the blue housing facing down.
- Open the cage lid
- Remove the brush cage lid by firmly pulling up at the hinges. Remove one hinge at a time.
- Clean all surfaces of the brush cage with cleaning solution, paper towels, and cotton swabs. You may need to use a pick to clean tight corners and slots.

Step 31



- Place brush cage housing upside down (blue part up).
- Remove screw securing daughtercard.
- Move black and red wires inside the blue housing. This is required when separating the green brush cage assembly from the blue housing.

Step 32



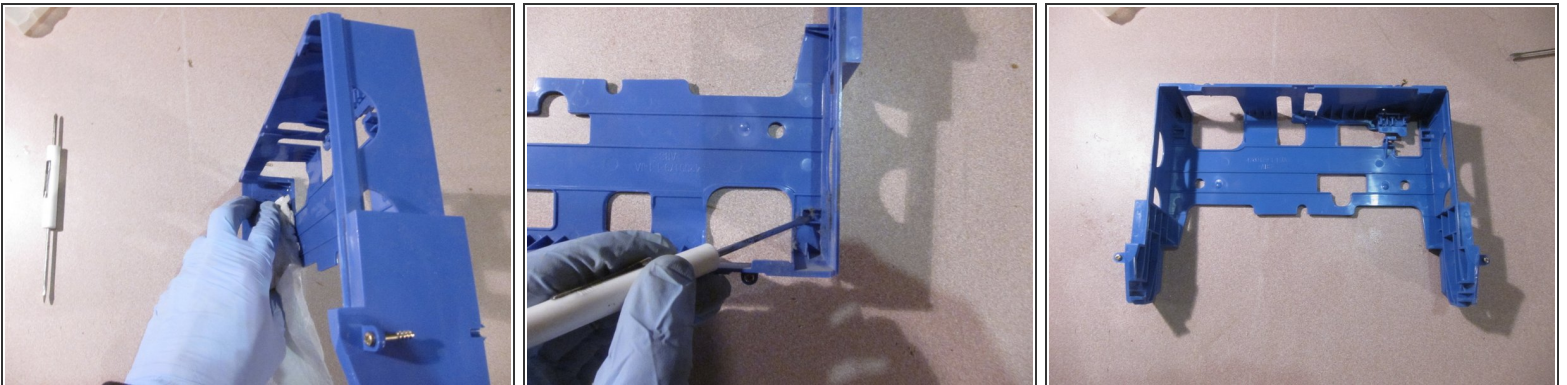
- Remove red sticker. This is holding down a small, round, weight attached to a cable.
- Pull the cable through the channel. This cable limits travel of the blue housing.

Step 33



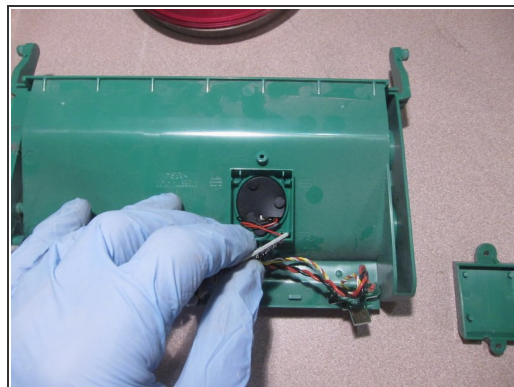
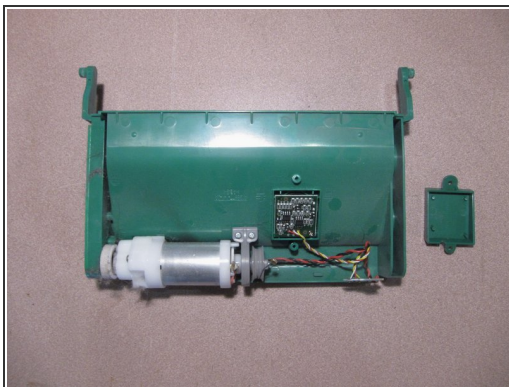
- Flip the brush cage assembly over. Arrange so the two "arms" are facing you.
- On one side, pull apart the green cage arm from the blue housing arm and lift out.
- Repeat on the other arm. The green brush cage assembly will lift out of the blue housing.

Step 34



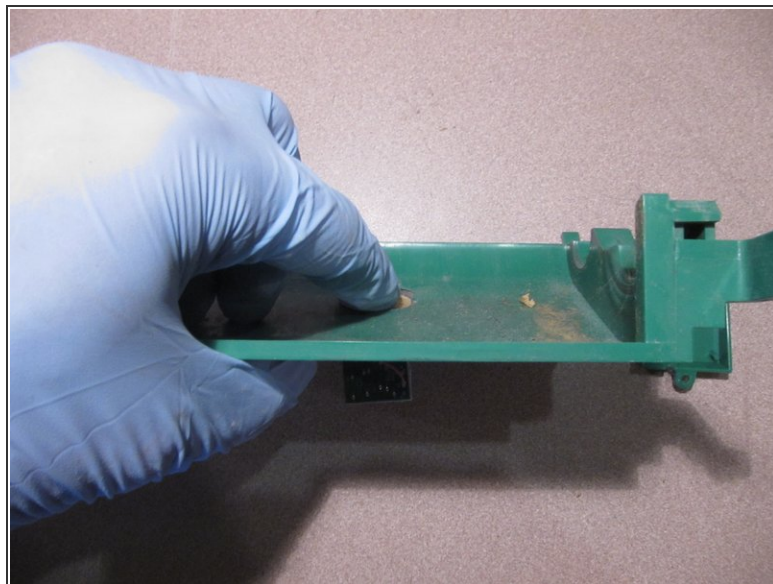
- Clean all surfaces of the blue housing with cleaning solution, paper towels, and cotton swabs. Use a pick to clean the debris out of tight spaces.

Step 35



- Place green brush cage upside down.
- Remove 2 screws securing the square sensor cover. Set sensor cover aside.
- Remove daughtercard from daughtercard mount.

Step 36



- Flip the green brush cage over.
- Remove the sensor by gently pressing on the silver disc.

Step 37



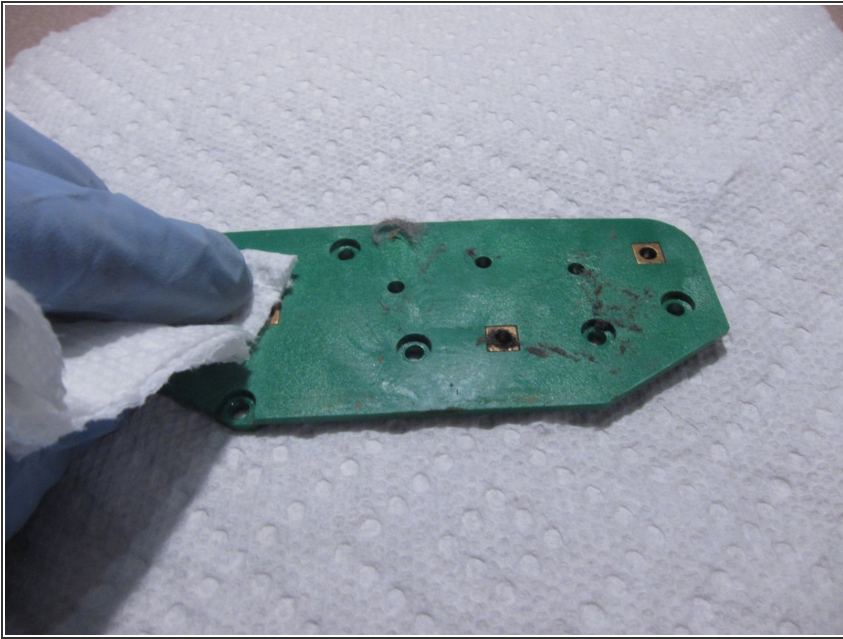
- Turn green brush cage over so the motor is facing up.
- Remove 2 screws securing the grey motor support to the green brush cage.
- Pull the motor sideways out of the gearbox.
- Remove the foam bushing and set aside.

Step 38



- Remove 6 screws from the gear housing.
- Pull front cover away from the brush cage body.

Step 39



- Clean all surfaces of the green housing with cleaning solution, paper towels, and cotton swabs. Use a pick to clean the debris out of tight spaces.

To reassemble your device, follow these instructions in reverse order.