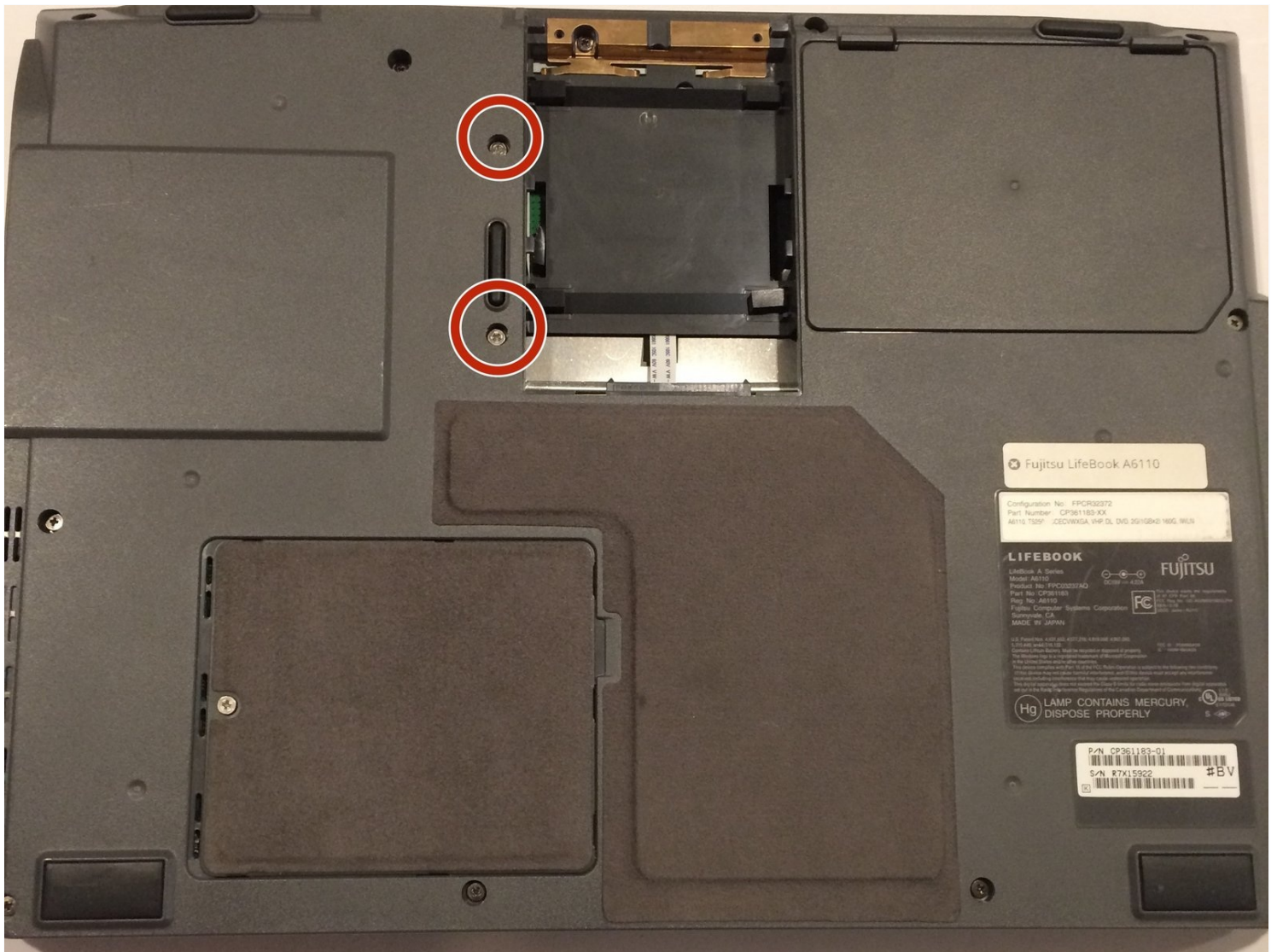




Fujitsu Lifebook Model A6110 Disk Drive Replacement

If your laptop fails in reading whatever disc...

Written By: Cody Moniz



INTRODUCTION

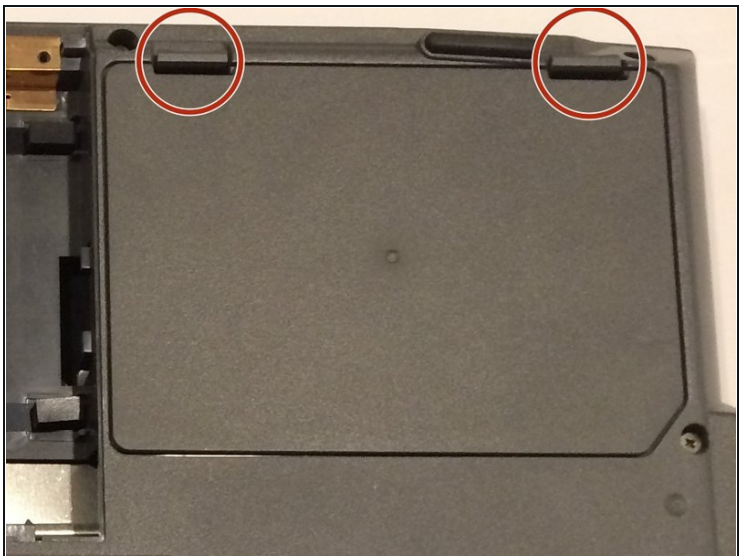
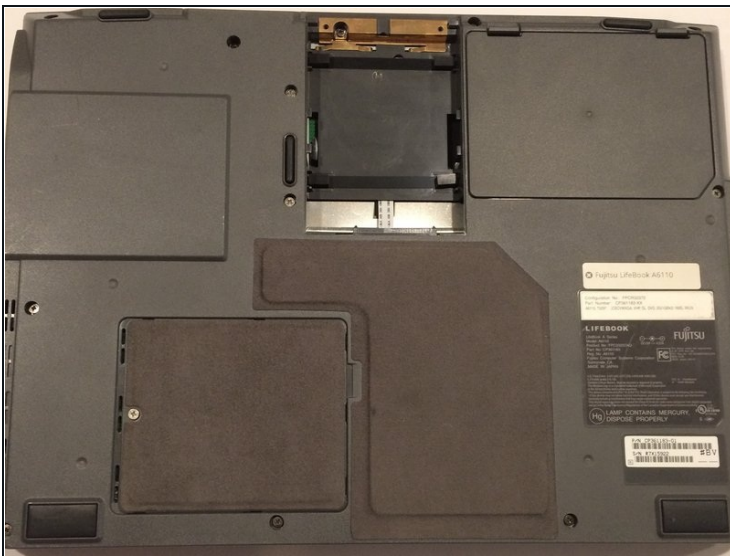
If your laptop fails in reading whatever disc you have, then the problem may lie on either your disc or your disk drive. This guide will show you the steps to replace your disk drive.



TOOLS:

Heavy-Duty Spudger (1)

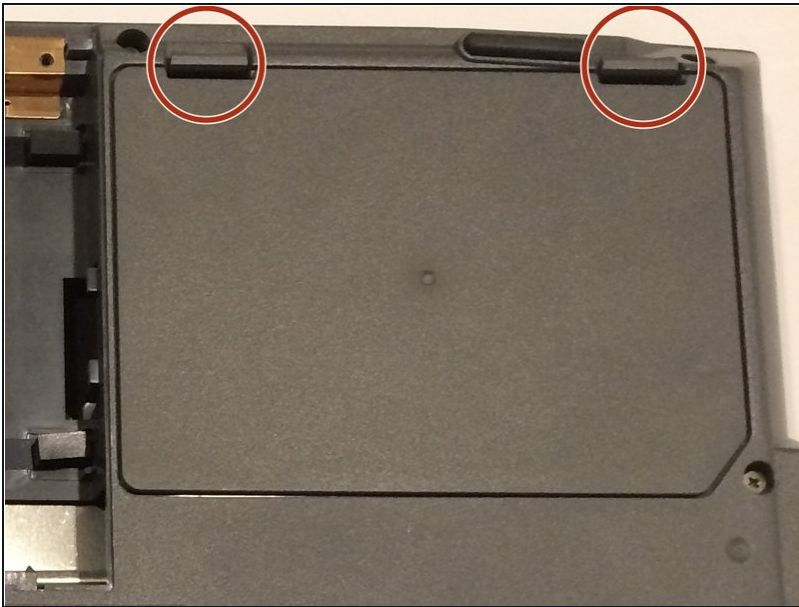
Phillips #1 Screwdriver (1)

Step 1 — Battery



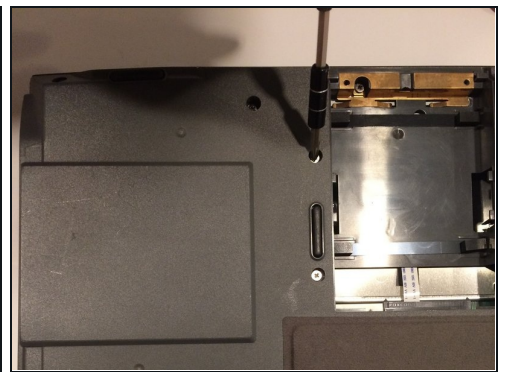
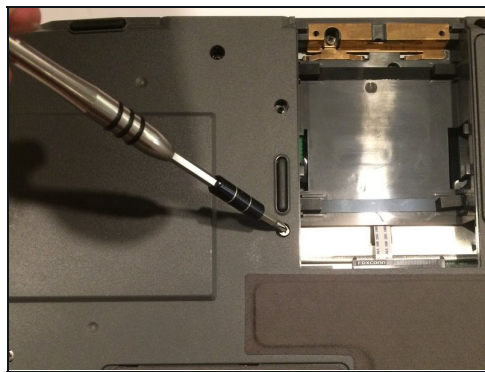
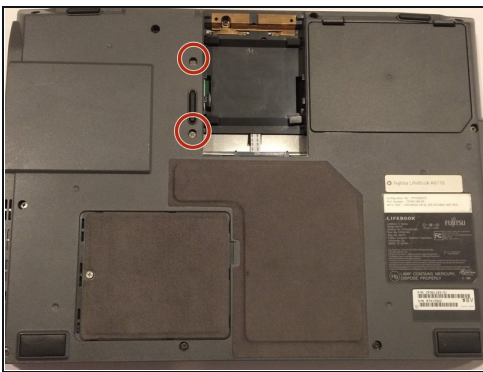
-  The computer should be fully turned off and disconnected from the power source.
-  Before handling electronic components, you should ground yourself. This will prevent damage to the components from a static charge. You can do this by touching any metal object.
- Flip your laptop so that the bottom of the laptop is facing up and the hinges of the screen are closest to you.

Step 2



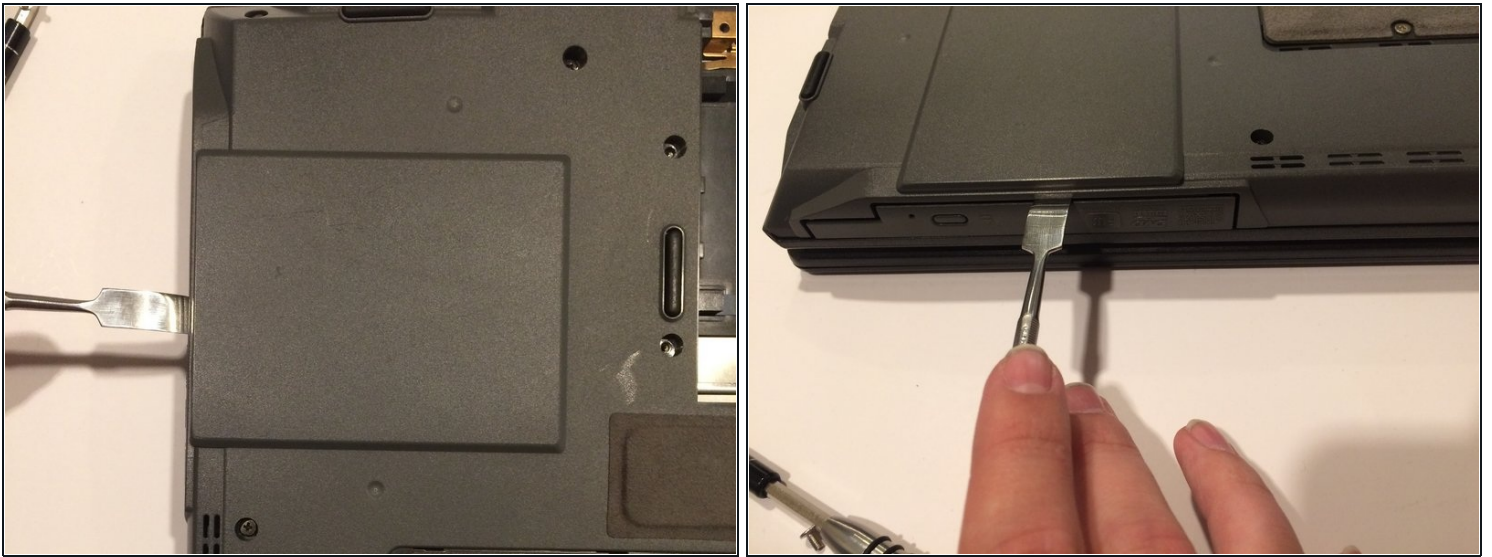
- To remove the battery, place your fingers underneath the two clips and simultaneously lift them up while pulling the cover towards you.

Step 3 — Disk Drive



- The disk drive will be located on the side of the computer, on the top-left corner
- Using a Phillips #1 screwdriver, remove the two 6 mm screws which are located above the disk drive. Remove the screws by turning your screwdriver counter-clockwise.

Step 4



- Insert the metal spudger in the gap between the disk drive and the laptop's body itself, as seen in the picture.
- Push the spudger down, so that it is behind the drive.
- Gently pull the disk drive out from the laptop until it unlatches.

Step 5



- Once the disk-drive has been unlatched from its slot, pull it gently from the laptop case.

To reassemble your device, follow these instructions in reverse order.