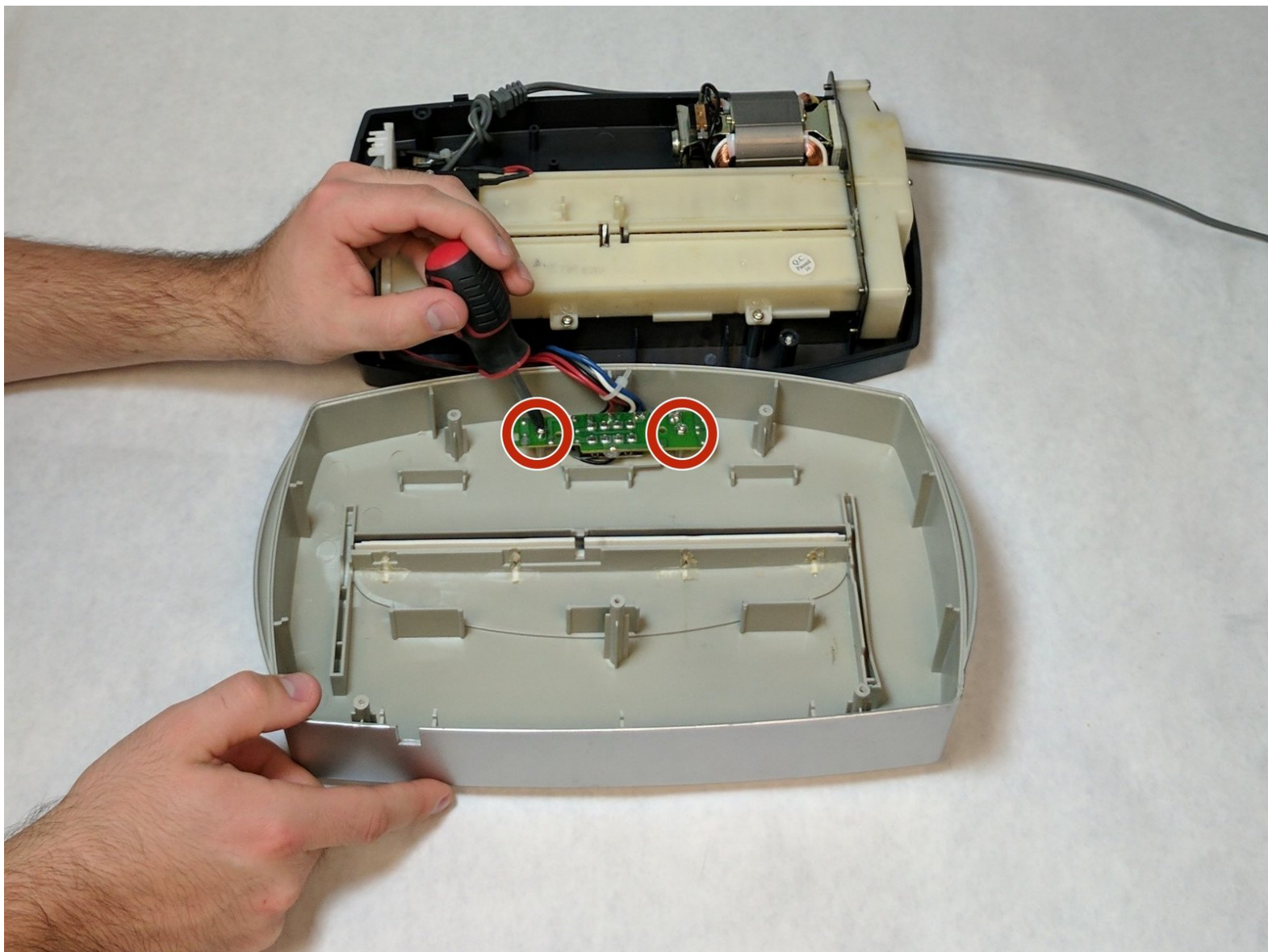




Fellowes T7CM On, Off, Reverse Switch Replacement

Fellowes T7CM On, Off, Reverse Switch Replacement

Written By: Michael Aldrich



INTRODUCTION

The Fellowes T7CM Paper shredder has a three way switch. This switch has three modes; on, off, or reverse. This guide explains how to remove and replace the switch.



TOOLS:

- [Phillips #000 Screwdriver](#) (1)
- [T6 Torx Screwdriver](#) (1)



PARTS:

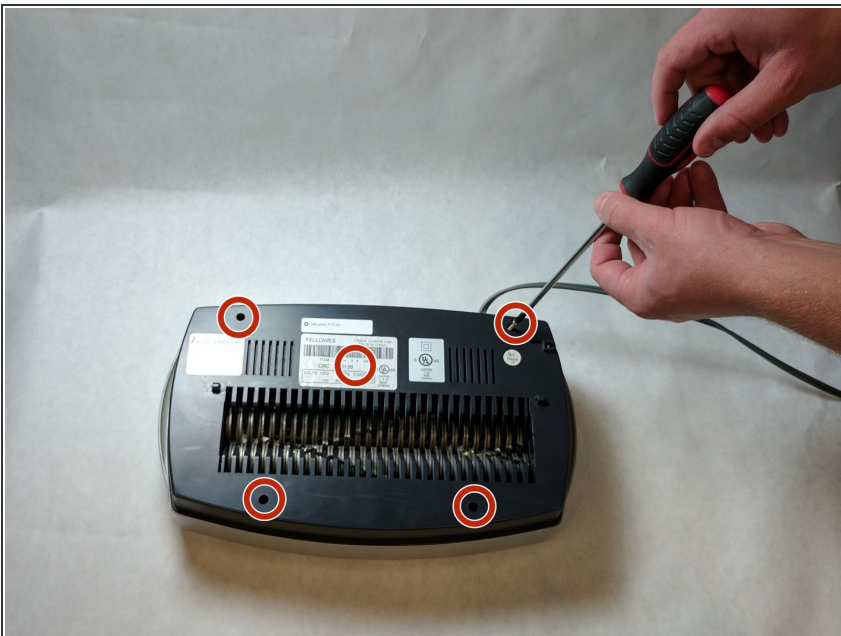
- [three way Switch](#) (1)

Step 1 — Fellowes T7CM Casing and Trigger Replacement



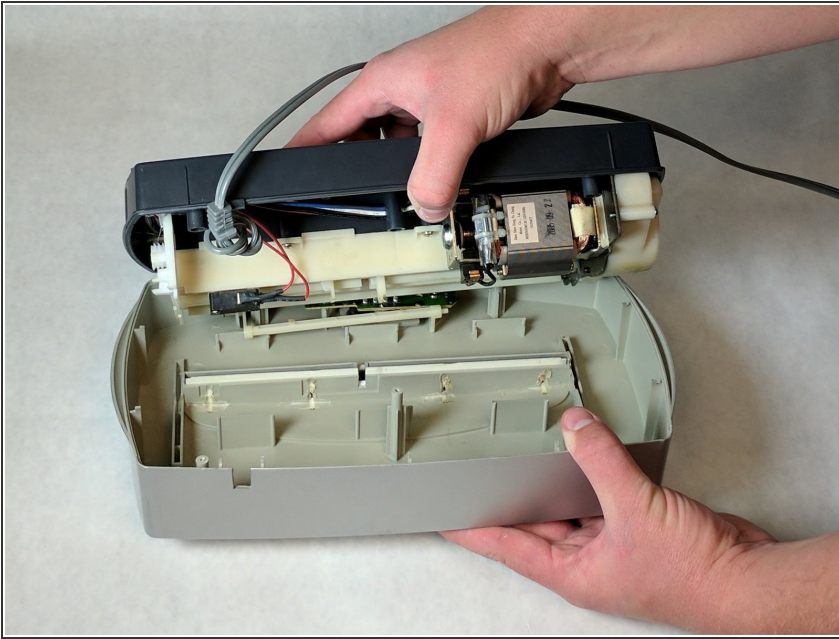
- Check to make sure the shredder is not plugged in to any electrical outlet.
- Remove the shredder from the catch basket and place the silver side down on a flat surface.
- Place the catch basket aside as you will not be needing it for the rest of the disassembly.

Step 2



- Flip the shredder silver side down and place on a flat even surface.
- Remove the manufacturer's label in order to gain access to the hidden screw hole.
- Locate all five of the case screws and remove them with a Phillips-Head screwdriver. The screws are located within the five marked circles in the photo. The size of the screws are 18 mm in length and head diameter of 5 mm.

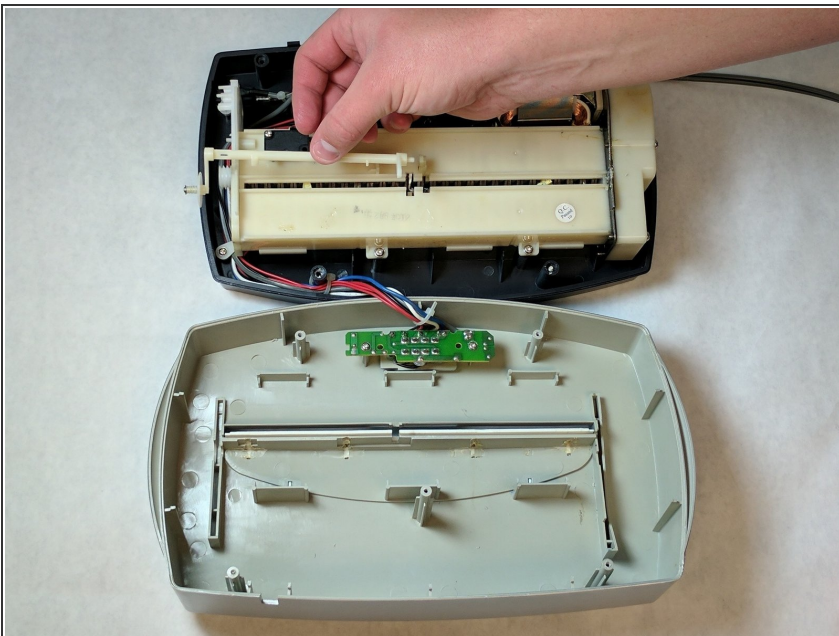
Step 3



- Once all of the screws are removed, slowly pull apart the casing.
- If the casing is not separating, gently wiggle the top part of the casing from the bottom part of the casing.

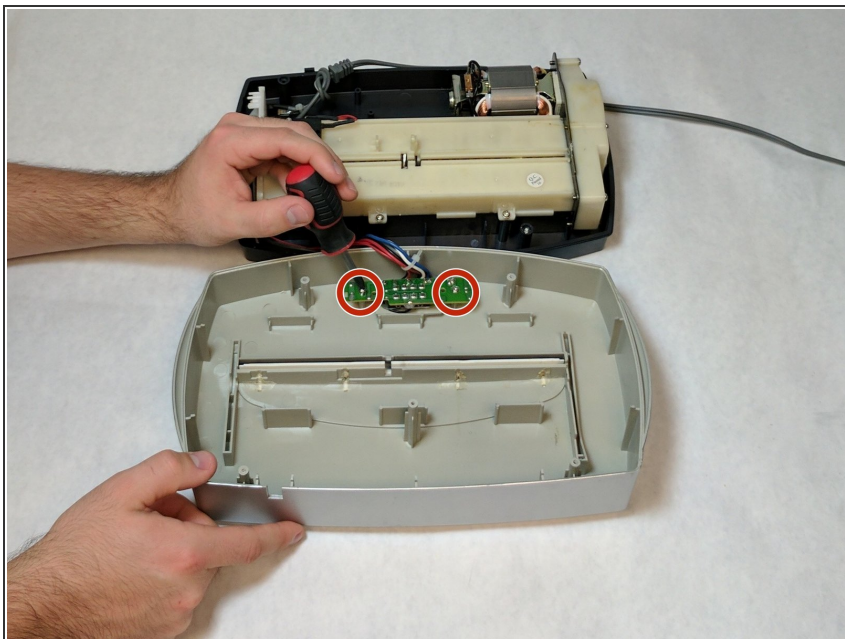
⚠ Use Caution during this procedure to prevent from damaging any of the internal parts.

Step 4



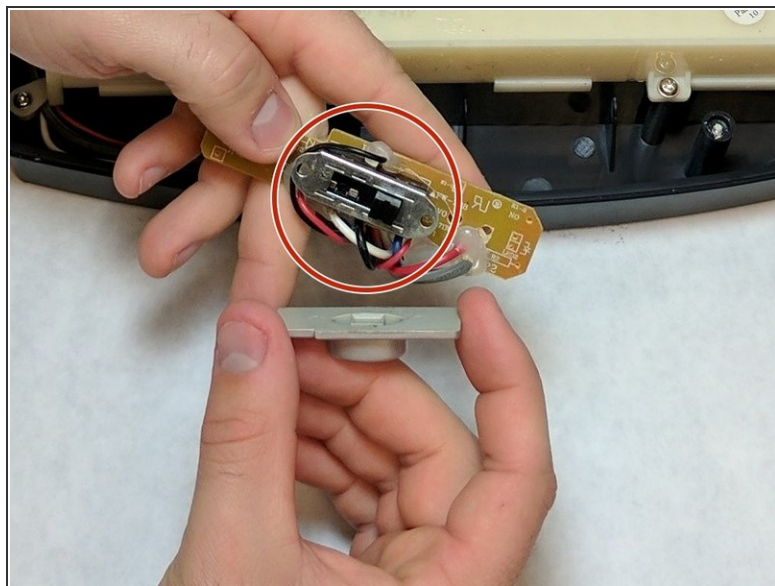
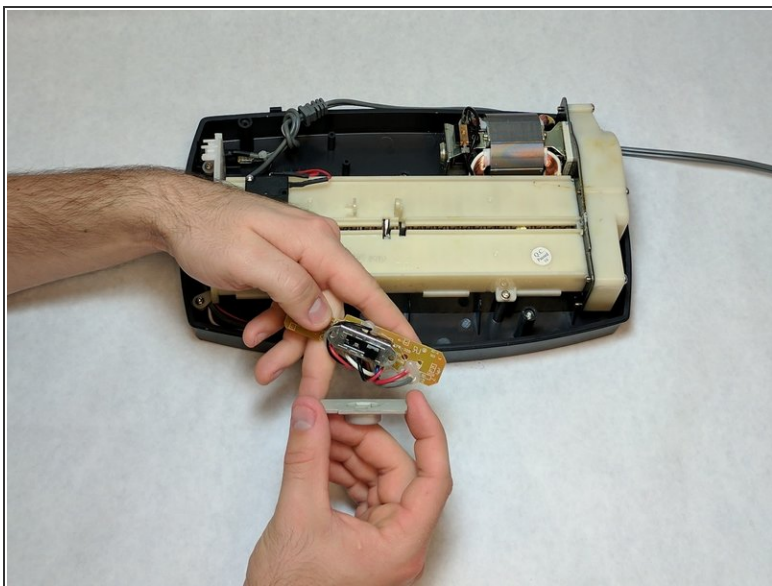
- Open the casing as shown to prevent tangling or damaging the wires.
- Take note to how the trigger assembly is attached before removal.
- The trigger assembly is one part and should come off all together with little to no force applied.
- Remove the trigger assembly.

Step 5 — On, Off, Reverse Switch



- Unscrew both of the screws from the circuit board of the switch . Lift the circuit board away from the device. The screw length is 10 mm and the head diameter is 6 mm.

Step 6



- Remove the plastic switch case.
- After the plastic case is removed, the switch can be replaced.
- During the switch replacement, be careful of the springs that are held in side. They can potentially come loose and get lost.

To reassemble your device, follow these instructions in reverse order.