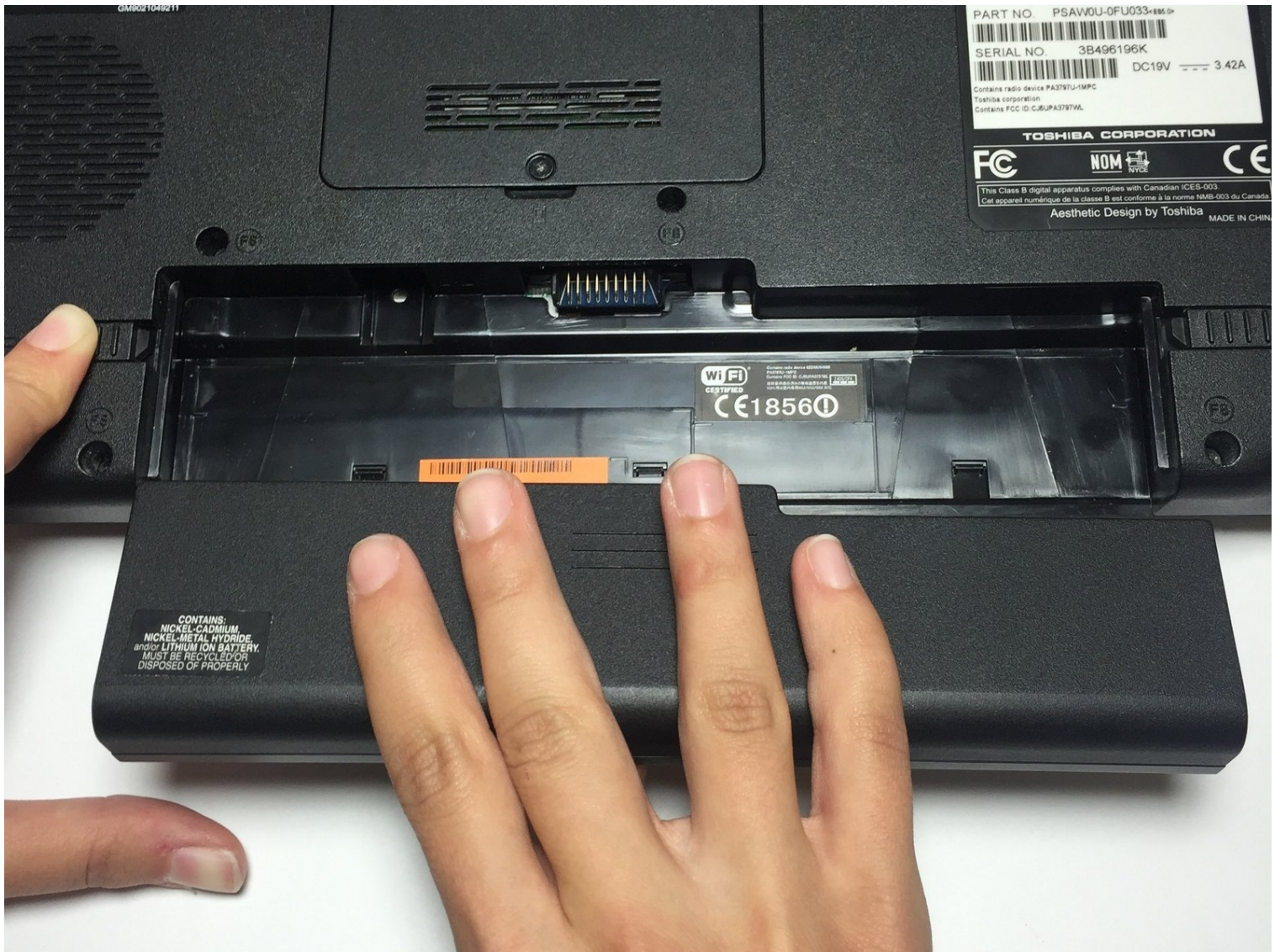




# Toshiba Satellite A665-S5170 Battery Replacement

If your battery will not retain charge when...

Written By: Chelsea Teague



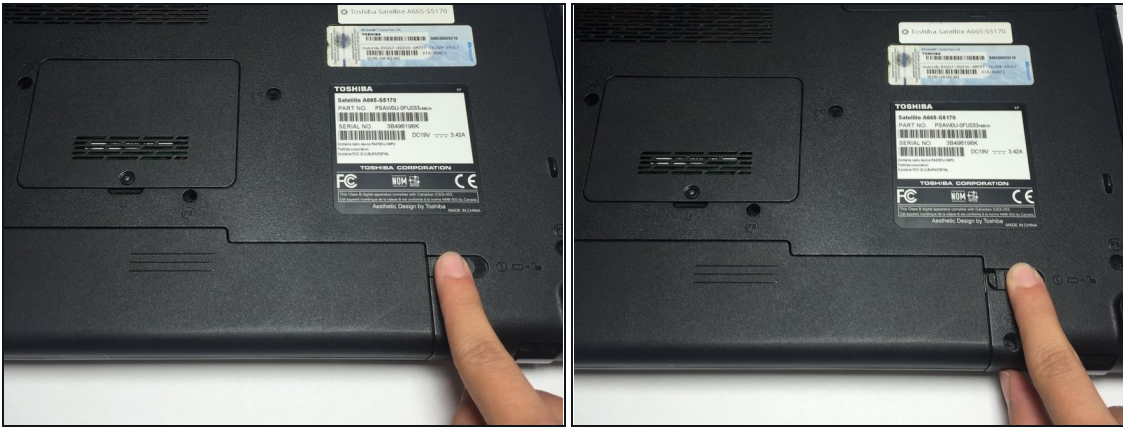
## INTRODUCTION


If your battery will not retain charge when your computer is unplugged from the adaptor, your battery may be faulty, and you may need to replace it. Replacing your Toshiba Satellite A665-S5170 battery does not require any tools and takes relatively little time.

### PARTS:

[Toshiba Satellite A660 and A665 Battery](#) (1)


## Step 1 — Battery



- Turn the computer upside-down so that the bottom of the laptop is facing up.
-  Position the computer so that you are able to read the words on the labels on the bottom of the laptop from left to right.
- Using the tip of your finger, slide the right clasp of the battery panel horizontally to the right until it locks into place.

## Step 2



- Slide the left clasp of the battery panel horizontally to the left, and hold it in place.
-  You will have to continue holding the left clasp of the battery panel in place for future steps in order to remove the battery.

### Step 3



- While continuing to hold the left clasp of the battery panel in place, slide out the old battery by pulling it towards you.

To reassemble your device, follow these instructions in reverse order.